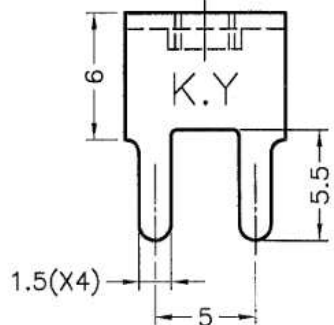
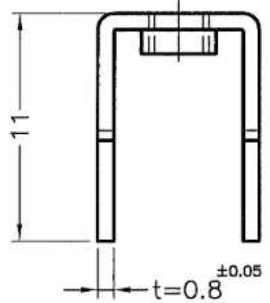
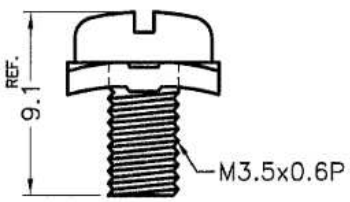
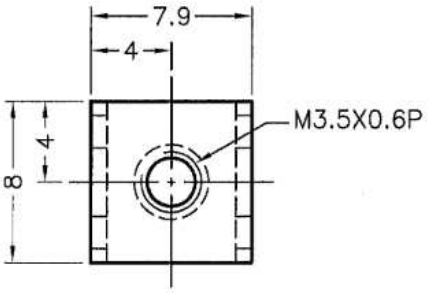
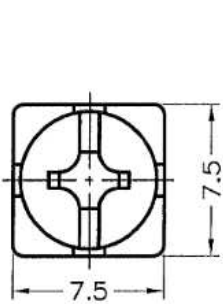
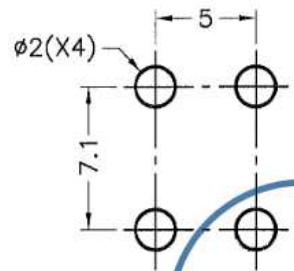


REVISIONS			
REV	DESCRIPTION	DATE	BY



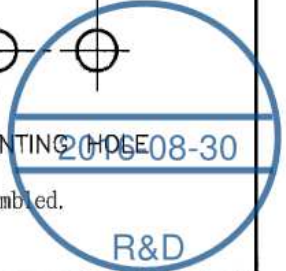
SCREW PCB-10B

BODY PCB-10A



MOUNTING HOLES 200508-30

NOTE: With screw but not assembled.



符合歐盟ROHS規範 (RoHS Compliant)	
★鉛Pb	<1000PPM
★鎘Cd	< 100PPM
★汞Hg	<1000PPM
★六價鉻Cr6+	<1000PPM
★多溴聯苯類PBBs	<1000PPM
★多溴聯苯醚類PBDEs	<1000PPM

PART NUMBER <b>PCB-10AB</b>		DRAWING NUMBER <b>PCB-10AB</b>		TITLE <b>P. C. B TERMINAL</b>	
SIZE <b>A4</b>		SCALE <b>NONE</b>		BODY MATERIAL <b>BRASS</b>	
UNIT <b>mm</b>		REV <b>C</b>		BODY FINISH <b>TIN PLATED</b>	
UNLESS OTHERWISE SPECIFIED TOLERANCE <b>±0.2</b>		COLOR		DATE <b>2005.10.05</b>	
DRAWN		CHECK		DRAWN	
APPROVED <i>Kang</i>		SCREW MA'L <b>STEEL</b>		SCREW FINISH <b>NI PLATED</b>	

## X-ON Electronics

Largest Supplier of Electrical and Electronic Components

*Click to view similar products for [Terminals](#) category:*

*Click to view products by [Ninigi](#) manufacturer:*

Other Similar products are found below :

[HT-13-10](#) [71M-250-32-NB](#) [01-2065-1-0216](#) [00581P0075](#) [M10-10RX](#) [M10BCK](#) [60205-1](#) [604200-1](#) [60598-1-CUT-TAPE](#) [60617-1-C](#) [60873-1](#) [M14-516R/SK](#) [M14-6RSX](#) [M18-10FLX](#) [M18-8FBX](#) [M18-8R/LX](#) [M18BCK](#) [61314-6-C](#) [61-S](#) [61-SN-A](#) [62-NBM-A](#) [63-S](#) [640179-1](#) [640917-2-CUT-TAPE](#) [6501550002](#) [66107-2-C](#) [66107-4-C](#) [696683-1](#) [696834-1](#) [696861-1](#) [696931-1](#) [696999-1](#) [M8-516RK](#) [M86700006](#) [MA250DMFMX-A](#) [701-2007](#) [701-2307](#) [701-7761-03](#) [70F-110-32-PB](#) [718-N-A](#) [71M-187-20-NBL](#) [71M-250-32-NBL](#) [72F-187-20-NBL](#) [72M-250-32-NBL](#) [7310](#) [73F-250-32](#) [73F-250-32-NBL](#) [73F-250-32-NL](#) [F14-10C](#) [F-1M](#)