

#8 power contacts for combo HiPer-D connectors

#8 POWER CONTACTS FOR COMBO HIPER-D CONNECTORS

These size #8 contacts snap into Glenair combo HiPer-D size #8 cavities and can be removed with a plastic extraction tool. Crimp termination. Two sizes are available, #0812 for AWG 12-14 wire, and #0816 for AWG 16-18 wire. Gold plated copper alloy, 1000 VAC DWV rating, 23 amp current rating. Optional sealing boot prevents moisture ingress. **Intermateable with standard D-Subminiature size #8 power contacts.**



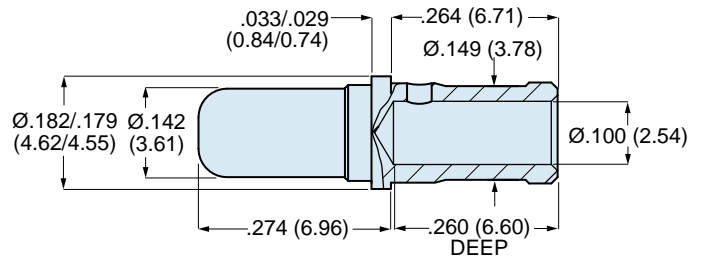
Fig. 1
Pin Contact
850-056



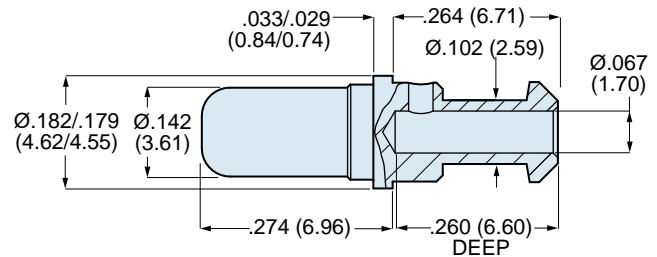
Fig. 2
Socket Contact
850-057

Fig.	Contact Type	AWG Wire Size	Part Number Contact Only	Part Number Contact and Sealing Boot
1	Pin	#12, #14	850-056-0812	850-056-0812F
		#16, #18	850-056-0816	850-056-0816F
2	Socket	#12, #14	850-057-0812	850-057-0812F
		#16, #18	850-057-0816	850-057-0816F

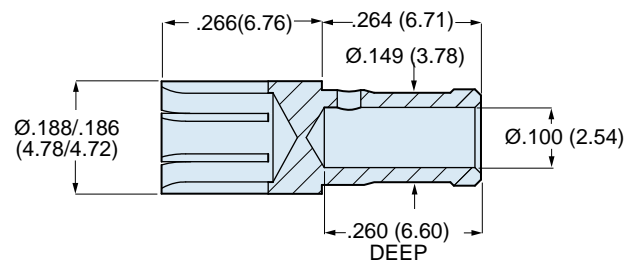
Pin Contact
850-056-0812



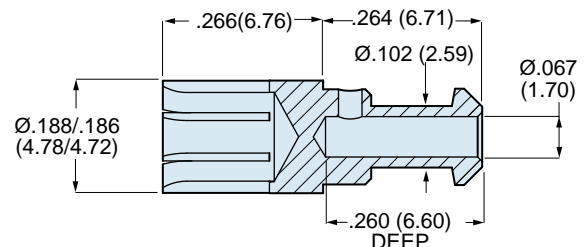
Pin Contact
850-056-0816



Socket Contact
850-057-0812



Socket Contact
850-057-0816



Material and Finish

Contact: Copper alloy, 50 microinches gold over nickel.

Sealing Boot: Thermoplastic and Fluorosilicone

Specifications

Current Rating: 23 Amps

Contact Resistance: 10 milliohms

Crimp Tensile Strength: AS39029 Table 10

Temperature Range: -65° to + 200° C.

Tools

Crimp Tool: 859-081 (Daniels M309)

Positioner for Crimp Tool: 859-083 (Daniels TP1711)

Insertion/Extraction Tool: 809-132 (M81969/14-04)

D

X-ON Electronics

Largest Supplier of Electrical and Electronic Components

Click to view similar products for [D-Sub MIL Spec Connectors](#) category:

Click to view products by [Glenair](#) manufacturer:

Other Similar products are found below :

[M24308/4-13Z](#) [M8351307-B](#) [D38999/20FJ43HN](#) [D38999/24WG11PB-LC](#) [D38999/24WG41HN](#) [MDM-15PH041P](#) [MDM-21PH041P](#) [MDM-21SH003B-K139](#) [850-056-0812](#) [1218697-4](#) [DBMM25S](#) [MS27467T21F41S](#) [17D25HV](#) [1996840-1](#) [243082-15](#) [1663962-1](#) [1757682-1](#) [17D-E51218-1](#) [17SDA15S](#) [1883533-1](#) [1883886-1](#) [1883889-1](#) [192900-0377](#) [308-CP6P0441-024H](#) [M24308/2-3Z](#) [M24308/4-3Z](#) [M24308/4-4F](#) [M24308/4-4Z](#) [M24308/8-347](#) [M83513/03-E09C](#) [M83723/75W2212N L/C](#) [D38999/24FJ29PN-LC](#) [D38999/24WG11SB-LC](#) [MDM-21PH046P](#) [5-1218949-1](#) [550-031NF1R6K](#) [550E001NF1R3J0L](#) [550T001NF1R6K0L](#) [557T283NF5B08](#) [C115368-1612B](#) [C115370-1717B](#) [DC121073157](#) [443869-3](#) [443869-4](#) [443869-5](#) [550S004NF1R1B0F03](#) [550-031NF1R2E](#) [550E003M2R9J0F04](#) [550E003M3R9J0F05](#) [550E024M104R9J0](#)