

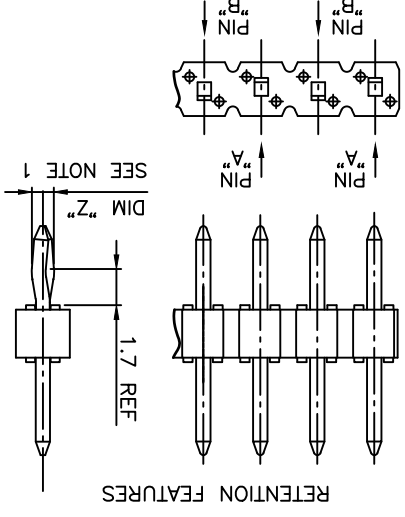
PLATING

- 1 = 0.76µm GOLD/GXT ON CONTACT AREA, 2µm TIN MIN ON TAIL
- 4 = 2µm TIN MIN FULL PLATED
- 5 = 0.25µm GOLD/GXT ON CONTACT AREA, 2µm TIN MIN ON TAIL
- 8 = 0.38µm GOLD/GXT ON CONTACT AREA, 2µm TIN MIN ON TAIL
- G = 0.76µm FULL GXT
- S = 0.38µm FULL GXT
- T = 2µm TIN MIN FULL PLATED INCLUDED PIN TYP

- 1.27µm NICKEL MIN UNDERLAYER FOR ALL PLATING VERSIONS

RETENTION FEATURES :

- 1 - PART NUMBER 77311-XXXXXXLF; DIM "Z"=(0.99)
- 2 - PINS "A" AND "B" USED FOR RETENTION.
- 3 - DIRECTION OF RETENTION SHOWN BY ARROWS.
- 4 - ON 4 TO 36 POSITIONS HEADER; RETENTION IS IN MID POSITION OF HEADER (4 CENTRAL PINS)
- 5 - FOR RETENTION OPTION , SOLDER TAIL LENGTH TO BE 2.9 MIN UP TO 3.5 MAX;
- 6 - HOUSING MATERIAL FOR P/N 77311-4AJC03LF & 77311-TAJC03LF HIGH TEMPERATURE THERMOPLASTIC UL94V-0 COLOR : NATURAL
- 7 - ONLY FOR PLATING 1XX, 8.0MM GOLD / GXT PLATING AREA FROM PIN TYPE ON MATING SIDE



RETENTION FEATURES

PLATING SPECIFICATIONS :

7 - ONLY FOR PLATING 1XX, 8.0MM GOLD / GXT PLATING AREA FROM PIN TYPE ON MATING SIDE

mat'l. code	surface	ISO 1302	tolerance	ISO 406 ISO 1101	projection	product family	BERGSTIK
litr ecn no	dr	date	tolerances unless otherwise specified		projection	title	
BU	B-20596	AMA	15.03.30	angles	linear	UNSHR.HEADER	
BV	F-22085	LMU	15.10.05	angles	linear	SUR SR TMT	
BW	F-22100	AMA	15.10.08	linear	linear	SUR SR TMT	
BX	F-26241	LMU	17.03.01	dr	D.LE	scale N/A	
BS	B-20169	BVE	15.02.12	chr	JM.C	01.01.24	Amphenol FCI
BT	B-20497	BVE	15.03.18	appd	JF.N	01.01.24	
sheet	revision	sheet	index	sheet	index	sheet	index

dwg no	77311	sheet 2 of 3	size	A3
type	CUSTOMER	Drawing		

PRODUCTS SPECIFICATIONS		
PIN STYLE	MATING	SOLDER
01	5.84	2.41
02	5.84	3.42
03	5.72	5.09
05	5.72	10.14
08	5.72	17.78
15	8.51	2.55
18	5.84	3.05
19	12.83	3.03
20	15.37	3.04
22	7.75	3.05
24	6.75	2.9
25	8.51	3.18
27	6.6	2.65
26	15.57	2.84
29	17.5	3.46
32	10.3	3.05
38	5.84	3.82
39	11.2	3.05
46	8.08	2.98
54	8.08	3.81
58	14.47	3.05
62	13.5	3.05
70	20.46	3.00
83	5.72	8.51
85	6.98	3.05
87	5.6	10.21
91	5.65	12.76
92	6.00	4.81
93	15.60	3.20
94	10.00	8.45
95	10.95	3.05
96	3.00	1.35
98	3.00	1.35
99	24.00	3.05
AA	5.72	15.24
AB	N/A	N/A

NOTE 7

PRODUCTS SPECIFICATIONS		
PIN STYLE	MATING	SOLDER
AC	7.21	3.05
AD	17.53	3.43
AE	4.99	2.80
AF	5.72	3.05
AG	5.84	4.95
AH	14.31	3.20
AJ	8.90	3.40
AK	25.06	3.00
AL	3.30	3.30
AM	9.26	3.05
AN	7.60	4.40
AP	7.80	3.30
AR	18.86	2.41
AS	11.91	1.45
AT	4.60	4.60
AU	12.10	3.10
AV	6.30	6.30
AW	9.16	1.80
AX	5.08	2.43
AY	7.49	3.47
BA	8.08	2.75
BB	10.80	2.15
BC	8.08	3.81
BD	10.10	2.16
BE	13.65	2.41
BF	2.54	5.32
BG	4.98	1.85
BH	4.69	2.41
BJ	7.21	6.15
BK	6.86	2.65
BL	17.70	3.25
BM	10.96	3.70
BN	19.46	3.00
BP	8.80	3.20
BR	19.46	4.00

NOTE 6

mat'l. code	ISO 1302	surface	tolerance	ISO 606	ISO 1101	projection	product family	BERGSTIK
ltr ecn no	dr	date	tolerances unless otherwise specified			mm	UNSHR.HEADER	
H	F-29484	DDE	18.03.08	angles	linear	scale	N/A	
C	F-24496	AMA	16.07.13					
D	F-25890	LMU	17.01.11	dr	A.MA	15.10.08		
E	F-26241	LMU	17.03.01	engr	L.MU	15.10.08		
F	F-28243	DDE	17.09.21	chr	J.CO	15.10.08		
G	F-28445	DDE	17.11.10	appd	A.SO	15.10.08		
sheet	revision	sheet	index					

product family	BERGSTIK
title	UNSHR.HEADER
dwg no	77311
sheet 3 of 3 size	A3
type	CUSTOMER
Drawing	

X-ON Electronics

Largest Supplier of Electrical and Electronic Components

Click to view similar products for [Headers & Wire Housings](#) category:

Click to view products by [FCT Electronics](#) manufacturer:

Other Similar products are found below :

[95000-104TRLF](#) [10135584-644402LF](#) [DF62W-EP2022PCA](#) [95000-106TRLF](#) [DF62W-2022SCA](#) [DF62W-EP2022PC](#) [2203348](#) [DF62W-2022SC](#) [1084018](#) [1029039](#) [1084017](#) [802-10-012-10-002000](#) [1112640](#) [1112639](#) [891-007-9SS-BST1T](#) [000-34000](#) [0008550134](#) [0009482033](#) [0009507031](#) [57102-F02-18ULF](#) [57102-S06-03LF](#) [57202-S52-04LF](#) [PCN6-15S-2.5E](#) [0039019024](#) [58102-G61-06LF](#) [582553-1](#) [0009485154](#) [0009508121](#) [0022285053](#) [0050291907](#) [018731A](#) [LY20-4P-DT1-P1E-BR](#) [02.125.8002.8](#) [60101931](#) [60598-1 \(Cut Strip\)](#) [M1625-3R/100](#) [61062-3](#) [61082-181009](#) [CSU011177004](#) [636-1427](#) [638009-1](#) [641938-9](#) [641991-4](#) [644168-1](#) [644827-2](#) [647662-1](#) [65039-019ELF](#) [65692-001LF](#) [65781-018](#) [65781-047](#)