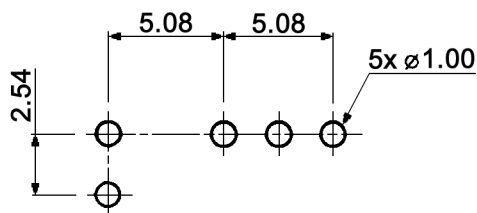
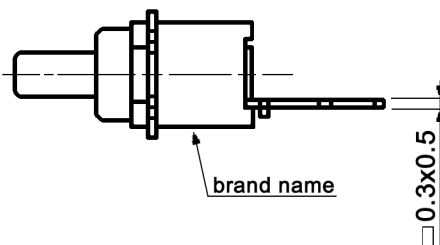


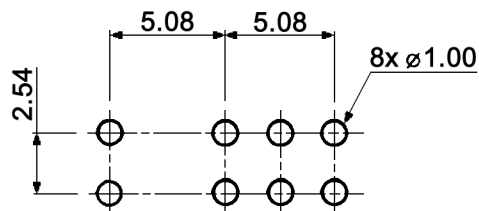
P.C. LAYOUT



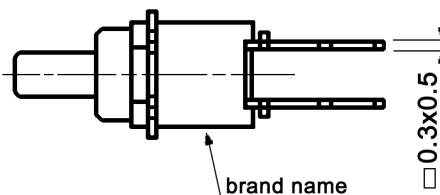
FP 1 F-VM



P.C. LAYOUT



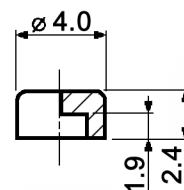
FP 2 F-VM



Specifications:

- Contact rating: max.: 0.4VA, 28V DC
min.: 1µA, 20mV DC
- Contact resistance: 100mOhm max.
- Insulation resistance: 500MOhm min. at 250V DC
- Operating temperature: -40°C to +85°C
- Storage temperature: -40°C to +85°C
- Mechanical life: min. 30 000 cycles
- Soldering conditions: auto-soldering: max.: 250 +/-5°C, 7sec.
max.: 270 +/-5°C, 5sec.

Plastic caps:



- black KF 4105
- grey KF 4107
- red KF 4109
- white KF 4110

- Mounting: on pc-board
- ESD resistance: 8kV min. (between lever and terminals)
- Switching function: on - mom (when looking at the brand name, the normally closed contact is on the left-hand side)
- Material: Contacts: phosphor bronze, gold plated
Terminals: PC terminals, crimped, phosphor bronze, gold plated
Case / lever: PES, UL94V-0, washable



Tolerances:	Date	Name
	01/09	dr
Temperatures	04/11	dr
Modifications	Date	Name

FP 1 F-VM / FP 2 F-VM

knitter-switch

20 25 71

Page

1/1

X-ON Electronics

Largest Supplier of Electrical and Electronic Components

Click to view similar products for [Pushbutton Switches](#) category:

Click to view products by [Knitter-Switch](#) manufacturer:

Other Similar products are found below :

[LW1L-M1C10V-A](#) [LW2L-A1C20M-GD](#) [LW2L-M1C20M-A](#) [60324L](#) [M7E-HRN2](#) [67021K512](#) [67081K512X](#) [701PB580](#) [719-5504-000](#)
[MDPSSGLFS](#) [810KSV30B](#) [MML21KA3ABK](#) [MML23KA3AC05K-001](#) [MML23KW3AA01W](#) [8418K2](#) [8646AB6X718UL](#) [8646ABUL](#)
[FSDWH](#) [9001KXRK](#) [9001T8BK](#) [9533CD4+U574+U4922](#) [1203MRA](#) [A22EM01S](#) [A595](#) [1202A6](#) [12037A2ULCSA](#) [1203A2UL](#) [ABD122N-](#)
[B](#) [1211390004](#) [ABN111-Y](#) [ABN400-R](#) [1211500044](#) [1211580012](#) [1212MRA](#) [1232A6NF](#) [RA3CSH6A](#) [1241.1183.7047](#) [1241.2511](#)
[1241.3428](#) [1223A2ULCSA](#) [1223MRA](#) [1232AX2119](#) [1241.1183.8000](#) [1241.1183.8029](#) [1241.2506](#) [1241.2606](#) [12MA6](#) [1301940184](#)
[RELBARF6X10\(PLASTIC\)](#) [13435AG](#)