


**GREEN MODE**
**RoHS**

Country of Origin : China  
 Operating Temperature : 0~40 [°C]  
 Dimension : 80x 58x 39 [mm]  
 Certified AC Plugs: EU, UK, USA/Japan/Taiwan, Aus, China, Korea  
 Efficiency level (ErP) : VI



Approvals / Marks :


**Specifications**

| Model             | Voltage DC [V] | Loading [A] | Max. Power [W] | Ripple / Noise [mV] p-p | Connector [mm] |
|-------------------|----------------|-------------|----------------|-------------------------|----------------|
| SYS1588-2005-Wxx* | 5              | 0~4         | 20             | 120                     | 2.1x5.5x11     |
| SYS1588-2406-Wxx* | 6              | 0~4         | 24             | 120                     | 2.1x5.5x11     |
| SYS1588-3009-Wxx* | 9              | 0~3.33      | 30             | 120                     | 2.1x5.5x11     |
| SYS1588-3012-Wxx* | 12             | 0~2.5       | 30             | 200                     | 2.1x5.5x11     |
| SYS1588-3015-Wxx* | 15             | 0~2.0       | 30             | 200                     | 2.1x5.5x11     |
| SYS1588-3018-Wxx* | 18             | 0~1.66      | 30             | 240                     | 2.1x5.5x11     |
| SYS1588-3024-Wxx* | 24             | 0~1.25      | 30             | 240                     | 2.1x5.5x11     |
| SYS1588-3048-Wxx* | 48             | 0~0.63      | 30             | 400                     | 2.1x5.5x11     |

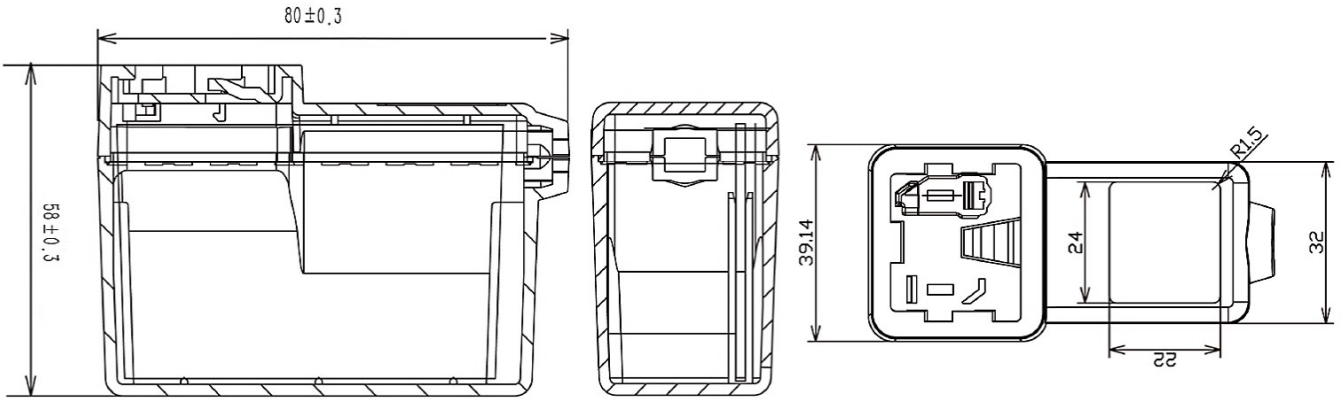
**Features:**

Certified plugs Wxx = W2E - Europe | W3U - England | W2 - USA, Canada, Japan, Taiwan | W2A - Australia | W2C - China | W2K - Korea  
 Output connector: standard: 2.1 x 5.5 x 11mm or customer requirement | Regulated Output With Low Ripple Noise | Safety Agency Requirements and EMI/EMS Certified  
 Private Label Marking Available | Modified and Custom Design Available | 2 Years Warranty

| OUTPUT                         |                                                                                                                                                                                                                                      |
|--------------------------------|--------------------------------------------------------------------------------------------------------------------------------------------------------------------------------------------------------------------------------------|
| Turn delay                     | 5000ms max@AC low line input@output full load                                                                                                                                                                                        |
| Hold up time                   | 8ms min@AC nominal input@output full load                                                                                                                                                                                            |
| Efficiency (Normal)            | >85%@115v/60HZ, 230V/50HZ input & Full load                                                                                                                                                                                          |
| Transient response (dv,tmax)   | 0.4V dv max At AC nominal input loading from 20%load to 80% load                                                                                                                                                                     |
|                                | 16ms tmax Dynamic rise time 10 us max,duty 40ms max,Dynamic load step is slew rate of 0.5A/us                                                                                                                                        |
| Power out.Limit                | 30W                                                                                                                                                                                                                                  |
| Burn in limit                  | Full load 2 Hours                                                                                                                                                                                                                    |
| Power consumption              | 0.1W max. At AC nominal input@output min load                                                                                                                                                                                        |
| INPUT                          |                                                                                                                                                                                                                                      |
| Voltage                        | (90~264)VAC                                                                                                                                                                                                                          |
| Frequency                      | (47~63)hz                                                                                                                                                                                                                            |
| Current                        | 1.5A rms@AC low line input and DC output full load                                                                                                                                                                                   |
| Inrush Surge Current           | 40/60A max@power supply cold start,ambient temperature 25°C                                                                                                                                                                          |
| leakage current                | 0.25mA Max                                                                                                                                                                                                                           |
| PROTECTION                     |                                                                                                                                                                                                                                      |
| Over current/ Short protection | The power supply will be auto recovered when over current or short circuit faults remove (fold back). Is defined as any output impedance of less than 0.1Ω. The power supply will be auto recovered when short circuit faults remove |
| Over Voltage                   | The power supply will not be auto recovered when faults remove 110%-150%. (Voltage limit)                                                                                                                                            |
| Input protection               | F1:2A 250V Fuse The power supply shall be protected against power line surges and any abnormal condition                                                                                                                             |
| No Load protection             | The power supply is provided with no load operation to prevent the power supply and system from damage.                                                                                                                              |
| Protection class               | II, (ITU-T K.21 Surge 6KV on request)                                                                                                                                                                                                |

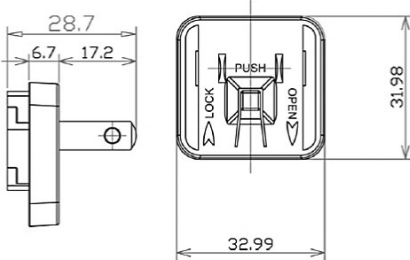
| EMC                                           |                                                                                                                                                                                                                        |
|-----------------------------------------------|------------------------------------------------------------------------------------------------------------------------------------------------------------------------------------------------------------------------|
| EMI                                           | EN 55022 Class B (2006)+A1(2007)   EN 61000-3-2(2006)+A1 (2009)+A2 Class A(2009)   EN 61000-3-3(2008)                                                                                                                  |
|                                               | EN55024(1998)+A1(2001)+A2(2003)   IEC 61000-4-2(2008)   IEC 61000-4-3(2006)+A1(2007)+A2(2010)   IEC 61000-4-4 (2004)+A1(2010)   IEC 61000-4-5(2005)   IEC 61000-4-6(2008)   IEC 61000-4-8(2009)   IEC 61000-4-11(2004) |
| SAFETY                                        |                                                                                                                                                                                                                        |
| CE   GS   cTUVus   FCC   RCM   PSE   EAC   CB |                                                                                                                                                                                                                        |
| OTHERS                                        |                                                                                                                                                                                                                        |
| Dielectric Strength                           | I/P-O/P:3000VAC                                                                                                                                                                                                        |
| M.T.B.F                                       | 500,000 Calculated Hours at 25°C, according to the MIL-HDBK-                                                                                                                                                           |
| Cable Length                                  | 1370mm (4.5 feet) standard cable or as required                                                                                                                                                                        |
| PLD (power line disturbance)                  | Line power surge   Line voltage SAG-more info on request                                                                                                                                                               |
| Cooling method                                | Natural Convection Cooling                                                                                                                                                                                             |
| Housing material                              | PC + ABS                                                                                                                                                                                                               |
| Temperature coefficient:                      | <±0.5%/°C                                                                                                                                                                                                              |
| ENVIRONMENT                                   |                                                                                                                                                                                                                        |
| Temperature                                   | Operating: 0~40°C / Storage: -20~-85°C                                                                                                                                                                                 |
| Humidity                                      | Operating: 8%~90%RH / Storage: 5%~95% RH non condensing                                                                                                                                                                |
| WEIGHT                                        |                                                                                                                                                                                                                        |
| NW: 240g/pc + plug                            |                                                                                                                                                                                                                        |
| GW:255g/pc + plug                             |                                                                                                                                                                                                                        |
| PACKING                                       |                                                                                                                                                                                                                        |
| Box                                           | 75 pcs/1 box                                                                                                                                                                                                           |

**Mechanical case specification:**

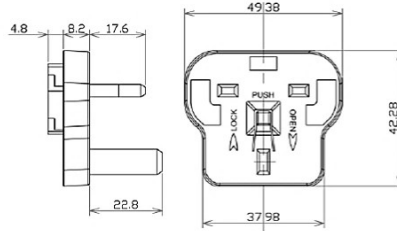


**Mechanical specification (country housing):**

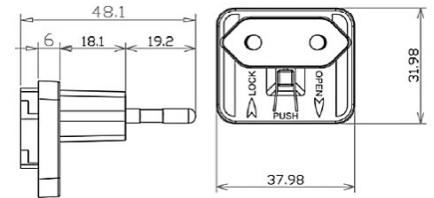
US / Japan type (W2)



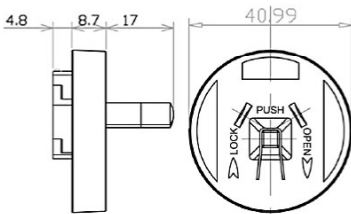
UK type (W3U)



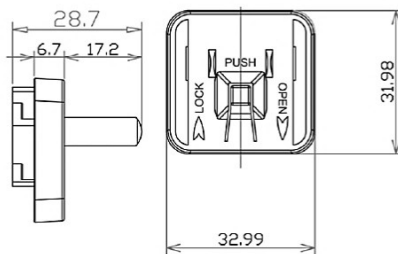
Europe type (W2E)



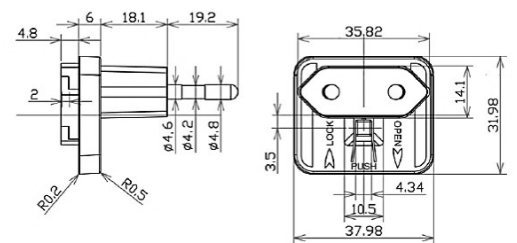
Australia type (W2A)



China type (W2C)

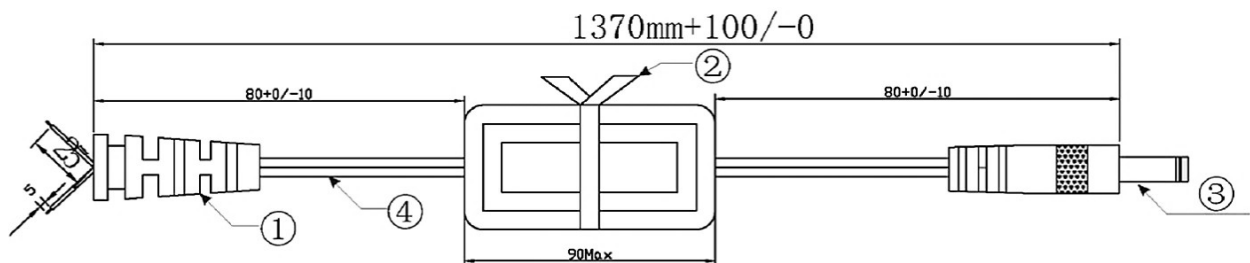


Korea type (W2K)



**Cable specification:**

2468#18AWG\*2C|1370mm (wire cable)



## X-ON Electronics

Largest Supplier of Electrical and Electronic Components

*Click to view similar products for [Wall Mount AC Adapters](#) category:*

*Click to view products by [Junction manufacturer](#):*

Other Similar products are found below :

[76000738](#) [76000756-B10](#) [ADP-163 E](#) [ADP-159 A](#) [PSAC05A-050L6](#) [RLMDT361800](#) [TE30A1803F01](#) [0650-00005](#) [P25A14E-R1C](#) [SWI24-12-N-P6R](#) [SWI24-24-N-ST](#) [TRH25033-A-02E01-Level-VI](#) [DA5-050US-B](#) [DA5-050UK-B](#) [RLMDT701800](#) [76000756](#) [DA5-050EU-B](#) [WSU120-2000-R13](#) [5V1A-USB](#) [AC-DC ADAPTER 160W](#) [WSU120-2000-13](#) [WSU150-0800-13](#) [76000980](#) [WSU075-3200-13](#) [WSU090-2500-13](#) [WSU050-2000-R13](#) [WSU240-1000-13](#) [WSU090-3500-R13](#) [WSU075-1500-13](#) [WSU050-3000-13](#) [WSU135-1330-13](#) [WSU045-1500-13](#) [WSU090-2500-R13](#) [WSU240-1500-13](#) [WSU180-0660-13](#) [WSU075-1500-R13](#) [WSU090-1300-13](#) [WSU180-1330-R13](#) [NTPS-24-TT-700](#) [BB-SMI1812VP230C1](#) [WSU150-1600-13](#) [WSU050-1500-13](#) [WSU090-0800-13](#) [WSU180-0450-13](#) [WSU150-0560-R13](#) [WSU135-0880-13](#) [WSU120-3000-13](#) [WSU120-1000-R13](#) [WSU090-1300-R13](#) [WSU060-4000-13](#)