

Product Specification

Material

Insulator: Glass-filled Thermoplastic
 PBT, UL94V-0 rates

Contact: Brass or Phosphor Bronze
 Plated full gold or selected gold in

mating area, 100u" min. tin plated
 on termination area, with entire contact
 under-plated 50u" min. Nickel

Electrical

Contact Resistance: ≤ 20 milliohms
 Max at 1 AMP DC.

Insulation Resistance: 5000
 megohms at 500 VDC

Dielectric Withstanding Voltage:
 500 VAC/rms 60Hz for 1 minute

Current Rating: 3 AMP

Voltage Rating: 250 VAC/rms 60Hz

T812 X XX XX C EU

IDC Socket:
 2.54mm Pitch

Housing Color

0: Grey
 1: Black

No of Positions:

06: 6 positions
 :
 :
 :
 64: 64 positions

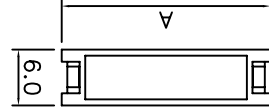
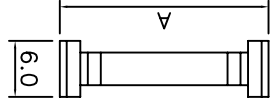
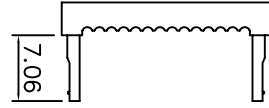
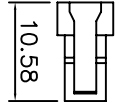
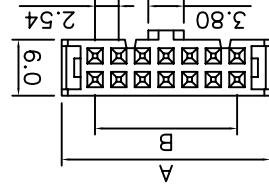
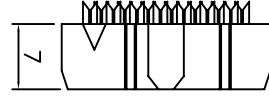
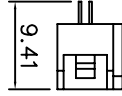
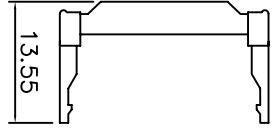
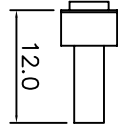
Plating Options:

A1: Flash Gold
 A2: 15u"/0.4um Gold
 A3: 30u"/0.8um Gold

SN:Tin

Variation Code:
 00: W/O Strain Relief
 01: With Strain Relief

EU: RoHS
 Compliant
 C: Fixed Index



Positions		A	B
30	42.66	35.56	
26	37.59	30.48	
24	35.10	27.94	
20	30.00	22.86	
16	24.94	17.78	
	56	75.74	68.58
	60	80.80	73.66
	62	83.35	76.20
	64	85.90	78.74

Positions		A	B
34	47.80	40.64	
36	50.29	43.18	
40	55.37	48.26	
44	60.56	53.34	
50	68.18	60.96	

Positions		A	B
14	22.40	15.24	
12	19.85	12.70	
10	17.27	10.16	
8	14.74	7.62	
6	12.16	5.08	
	16	24.94	17.78
	20	30.00	22.86
	24	35.10	27.94
	26	37.59	30.48
	30	42.66	35.56

Positions		A	B
14	22.40	15.24	
12	19.85	12.70	
10	17.27	10.16	
8	14.74	7.62	
6	12.16	5.08	
	16	24.94	17.78
	20	30.00	22.86
	24	35.10	27.94
	26	37.59	30.48
	30	42.66	35.56

Dimensions



TOLERANCE (mm)	APPROVALS	DATE	TITLE
X. ±0.3	DRAWN Roger	29/Nov/2006	IDC Socket
X.X ±0.2	CHECKED Eric	30/Nov/2006	
X.XX ±0.15	APPROVED Rob K.	01/Dec/2006	

UNITS:	SIZE:	DRAWING N°
mm	A4	T812 Series

Scale N.A.	Sheet 1 of 1
Amphenol European Design Center	

REV.	B

X-ON Electronics

Largest Supplier of Electrical and Electronic Components

Click to view similar products for [Headers & Wire Housings](#) category:

Click to view products by [Amphenol](#) manufacturer:

Other Similar products are found below :

[95000-104TRLF](#) [10135584-644402LF](#) [DF62W-EP2022PCA](#) [95000-106TRLF](#) [DF62W-2022SCA](#) [DF62W-EP2022PC](#) [2203348](#) [DF62W-2022SC](#) [1084018](#) [1029039](#) [1084017](#) [802-10-012-10-002000](#) [1112640](#) [1112639](#) [891-007-9SS-BST1T](#) [000-34000](#) [0008550134](#) [0009482033](#) [0009507031](#) [57102-F02-18ULF](#) [57102-S06-03LF](#) [57202-S52-04LF](#) [PCN6-15S-2.5E](#) [0039019024](#) [58102-G61-06LF](#) [582553-1](#) [0009485154](#) [0009508121](#) [0022285053](#) [0050291907](#) [018731A](#) [LY20-4P-DT1-P1E-BR](#) [02.125.8002.8](#) [60101931](#) [60598-1 \(Cut Strip\)](#) [M1625-3R/100](#) [61062-3](#) [61082-181009](#) [CSU011177004](#) [636-1427](#) [638009-1](#) [641938-9](#) [641991-4](#) [644168-1](#) [644827-2](#) [647662-1](#) [65039-019ELF](#) [65692-001LF](#) [65781-018](#) [65781-047](#)