

YTT-1XX-XX-X-X-XXX-XX

No OF POSITIONS  
 -02 THRU -50  
 (PER ROW)

LEAD STYLE  
 -01: .126 [3.20]  
 (USE T-1S13-07-X-2)  
 -04: .075 [1.91]  
 (USE T-1S13-04-X-2)

OPTION  
 \*\* -MW: METAL WASHER  
 (Q BODY SPECS ONLY)  
 (SEE FIG. 2, SHT. 2)  
 (.300 [7.62] MAX TAIL)

OPTIONS  
 -XXX: INDICATES POSITION POLARIZED

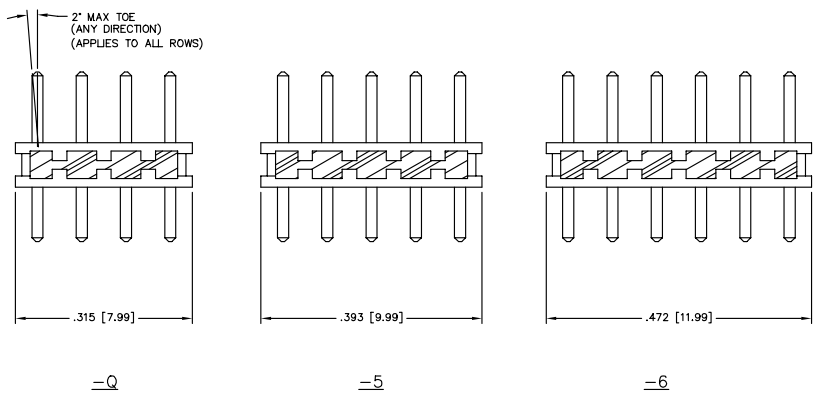
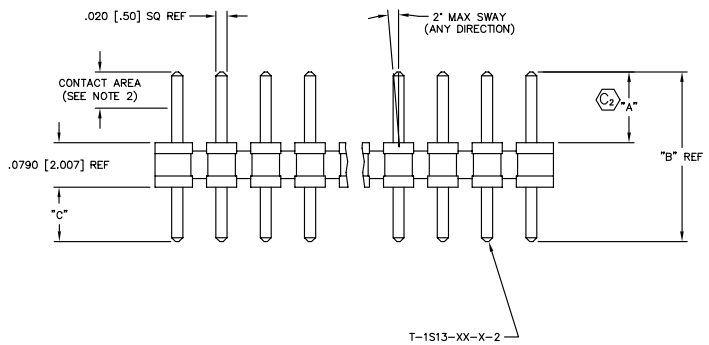
ROW OPTION  
 -Q: QUAD ROW (USE TMMH-50-Q)  
 -5: FIVE ROW (USE TMMH-50-5)  
 -6: SIX ROW (USE TMMH-50-6)

PLATING  
 -L: LIGHT SELECTIVE (USE T-1S13-XX-L-2)  
 -F: FLASH SELECTIVE (USE T-1S13-XX-F-2)  
 -S: SELECTIVE GOLD (USE T-1S13-XX-S-2)  
 -G: GOLD (USE T-1S13-XX-G-2)  
 -T: TIN (USE T-1S13-XX-T-2)  
 -H: HEAVY GOLD (USE T-1S13-XX-H-2)

**\*\* - MW OPTION, DO NOT DESIGN IN. SAMTEC WILL ONLY SUPPORT EXISTING BUSINESS 2/06/02.**

LEAD STYLE	TABLE 1		
	"A"	"B"	TERMINAL "C"
-01	.126 [3.20]	.302 [7.67]	T-1S13-07-X-2 .097 [2.46]
-04	.075 [1.91]	.255 [6.48]	T-1S13-04-X-2 .101 [2.57]

TABLE 2	
ROW SPEC.	"D"
-Q	3
-5	4
-6	5



Do not scale from this print

- NOTES:
- PARTS MAY BE CUT TO POSITION.
  - GOLD PLATING TO BE ON POST, TIN PLATING ON TAIL ON SELECTIVE PLATED PART.
  - Ⓢ REPRESENTS A CRITICAL DIMENSION.
  - MINIMUM PUSHOUT FORCE: 1.0 LB.
  - BULK PACKAGED
  - MAX CUT FLASH: .005 [.13]
  - .005 MAX VARIATION PIN/PIN
  - MUST USE CARBIDE BLADES.**
  - Ⓢ. ORIENTATE PINS TO REDUCE THE NUMBER OF BANDOLIER MARKS IN THE POST AREA. (SEE TABLE 3)

**PROPRIETARY NOTE**  
 THIS DOCUMENT CONTAINS INFORMATION CONFIDENTIAL AND PROPRIETARY TO SAMTEC INC. AND SHALL NOT BE REPRODUCED OR TRANSFERRED TO OTHER DOCUMENTS OR DISCLOSED TO OTHERS OR USED FOR ANY PURPOSE OTHER THAN THAT FOR WHICH IT WAS OBTAINED WITHOUT THE EXPRESSED WRITTEN CONSENT OF SAMTEC INC.

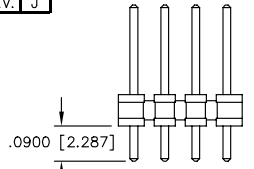
PLOT SCALE: .175 / DIMSCALE: .100

**samtec**  
 520 PARK EAST BLVD. NEW ALBANY, INDIANA 47150  
 PHONE (812) 944-6733 P.O. BOX 1147  
 CODE 55322

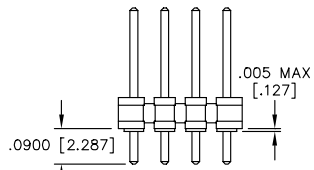
MISC/MKTG  
 YTT-MKT

MADE BY: BRYANT 02/09/99  
 YTT-1XX-XX-X-X-XXX-XX  
 SHEET 1 OF 2

REV. J

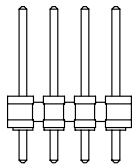


IN PROCESS 1



IN PROCESS 2

RE-PRESS TO DESIRED TAIL.



IN PROCESS 3

IN PROCESS 4  
(-T PLATING ONLY)

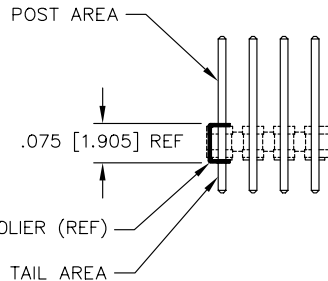


TABLE 3 (-T PLATING ONLY)	
LEAD STYLE	NUMBER OF BAND MARKS ALLOWED IN THE POST AREA
*-01	0
*-04	0

(SEE NOTE 9)  
(SEE TABLE 3)

**PROPRIETARY NOTE**

THIS DOCUMENT CONTAINS INFORMATION CONFIDENTIAL AND PROPRIETARY TO SAMTEC INC. AND SHALL NOT BE REPRODUCED OR TRANSFERRED TO OTHER DOCUMENTS OR DISCLOSED TO OTHERS OR USED FOR ANY PURPOSE OTHER THAN THAT FOR WHICH IT WAS OBTAINED WITHOUT THE EXPRESSED WRITTEN CONSENT OF SAMTEC INC.

UNLESS OTHERWISE NOTED DIMENSIONS ARE IN INCHES TOLERANCES ARE:

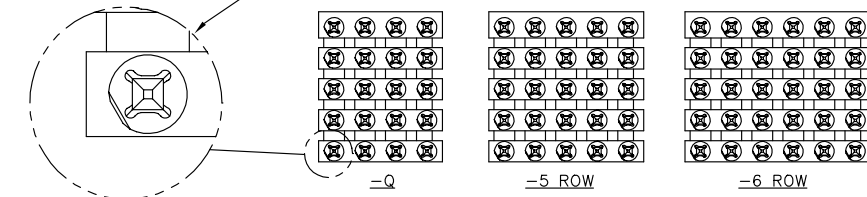
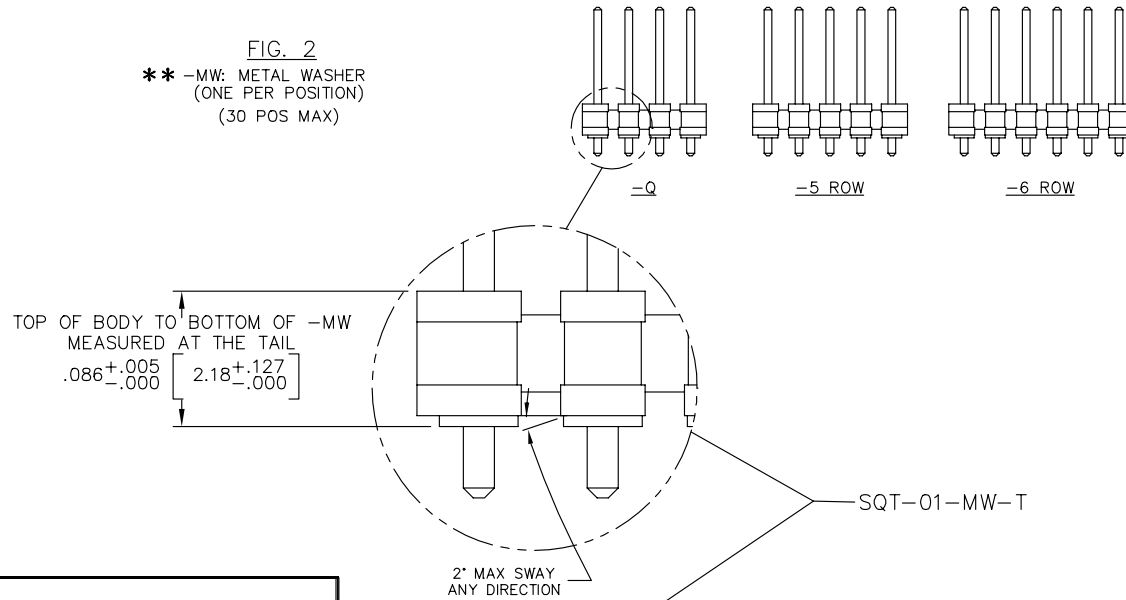
ONE PLACE DECIMALS ±.1[2.5] TWO PLACE DECIMALS ±.01[.3]  
THREE PLACE DECIMALS ±.005[.13] FOUR PLACE DECIMALS ±.0020[.051]

ANGLES ± 2°

TITLE:  
2mm x 2mm  
TERMINAL STRIP ASSEMBLY

DWG NO:  
YTT-1XX-XX-X-X-XXX  
SHEET 2 OF 2

FIG. 2  
\*\* -MW: METAL WASHER  
(ONE PER POSITION)  
(30 POS MAX)



**\*\* - MW OPTION, DO NOT DESIGN IN. SAMTEC WILL ONLY SUPPORT EXISTING BUSINESS 2/06/02.**

PLOT SCALE: .25 / DIMSCALE: .25

**samtec**

520 PARK EAST BLVD. NEW ALBANY, INDIANA 47150  
PHONE (812) 944-6733 P.O. BOX 1147  
CODE 55322

MADE BY:  
COREYR 07/27/00

YTT-1XX-XX-X-X-XXX  
SHEET 2 OF 2

## X-ON Electronics

Largest Supplier of Electrical and Electronic Components

*Click to view similar products for [Board to Board & Mezzanine Connectors](#) category:*

*Click to view products by [Samtec](#) manufacturer:*

Other Similar products are found below :

[10135583-642402LF](#) [89885-310LF](#) [589158040000018](#) [6-1393048-0](#) [68683-613](#) [MDF7-12DP-2.54DSA](#) [MDF7-18P-2.54DSA\(01\)](#) [MDF7-20DP-2.54DSA](#) [MDF7-26D-2.54DSA\(55\)](#) [MDF7-3P-2.54DSA\(01\)](#) [MDF7B-3P-2.54DSA\(55\)](#) [MDF7C-11P-2.54DSA\(55\)](#) [MDF7C-18P-2.54DSA\(55\)](#) [MDF7C-5P-2.54DSA\(01\)](#) [MDF7P-5P-2.54DSA\(55\)](#) [75234-0516](#) [FCN-230C068-11](#) [FCN-268F012-G/BD](#) [FCN-268F036-G/BD](#) [FCN-268M012-G/0D](#) [FCN-268M024-G/1D](#) [FCN-360C008-C](#) [FCN-360C040-C](#) [FCN-723J004/1](#) [MIS-048-01-F-D-DP-K](#) [832-10-034-10-001000](#) [93696-325LF](#) [11828-1FA](#) [AXK630345P](#) [18097-0013](#) [ICA-328STT](#) [2007042-2](#) [304400-2](#) [FCN-214Q030-G/0](#) [FCN-215Q040-G/0](#) [FCN-230C068-ESA](#) [FCN-234P048-G/0](#) [FCN-235D050-G/C](#) [FCN-360A3](#) [FCN-360C040-B](#) [210-93-314-41-105000](#) [2-22603-0](#) [379-064-521-202](#) [MDF7-12P-2.54DSA\(01\)](#) [MDF7-16P-2.54DS\(56\)](#) [MDF7-40DP-2.54DSA\(55\)](#) [MDF7-8P-2.54DSA\(55\)](#) [MDF7B-16P-2.54DSA\(55\)](#) [AXG720047](#) [5031084030](#)