

# 8000 series

## Momentary or alternate action pushbutton switches

*Distinctive features and specifications*



Bushing  $\varnothing$  6,35 (1/4) and  $\varnothing$  11,9 (15/32)

UL approved

### ELECTRICAL SPECIFICATIONS

- Max. current/voltage rating with resistive load :
  - silver contacts : 3A 250VAC - 6A 125VAC - 4A 30VDC
  - gold plated contacts : 0,4VA max. 20VAC or DC
- Initial contact resistance : 10 m $\Omega$  max.
- Insulation resistance : 1.000 M $\Omega$  min. at 500VDC
- Dielectric strength :
  - 1.000 Vrms 50 Hz min. between terminals
  - 2.000 Vrms 50 Hz min. between terminals and frame
- Electrical life : 30.000 cycles at full load

### MATERIALS

- Case : diallylphthalate (DAP)
- Actuator : brass, nickel plated
- Bushing : brass, nickel plated
- Housing : stainless steel
- Contacts
  - A** : silver
  - AD** : silver, gold plated
  - CD** : brass, gold plated
- Terminal seal : epoxy

### GENERAL SPECIFICATIONS

- Torque : 1,25 Nm (.922 Ft.lb) max. applied to nut
- Total travel : 2,70 mm (.106)
- Operating temperature : -40°C to +85°C

### AGENCY APPROVAL



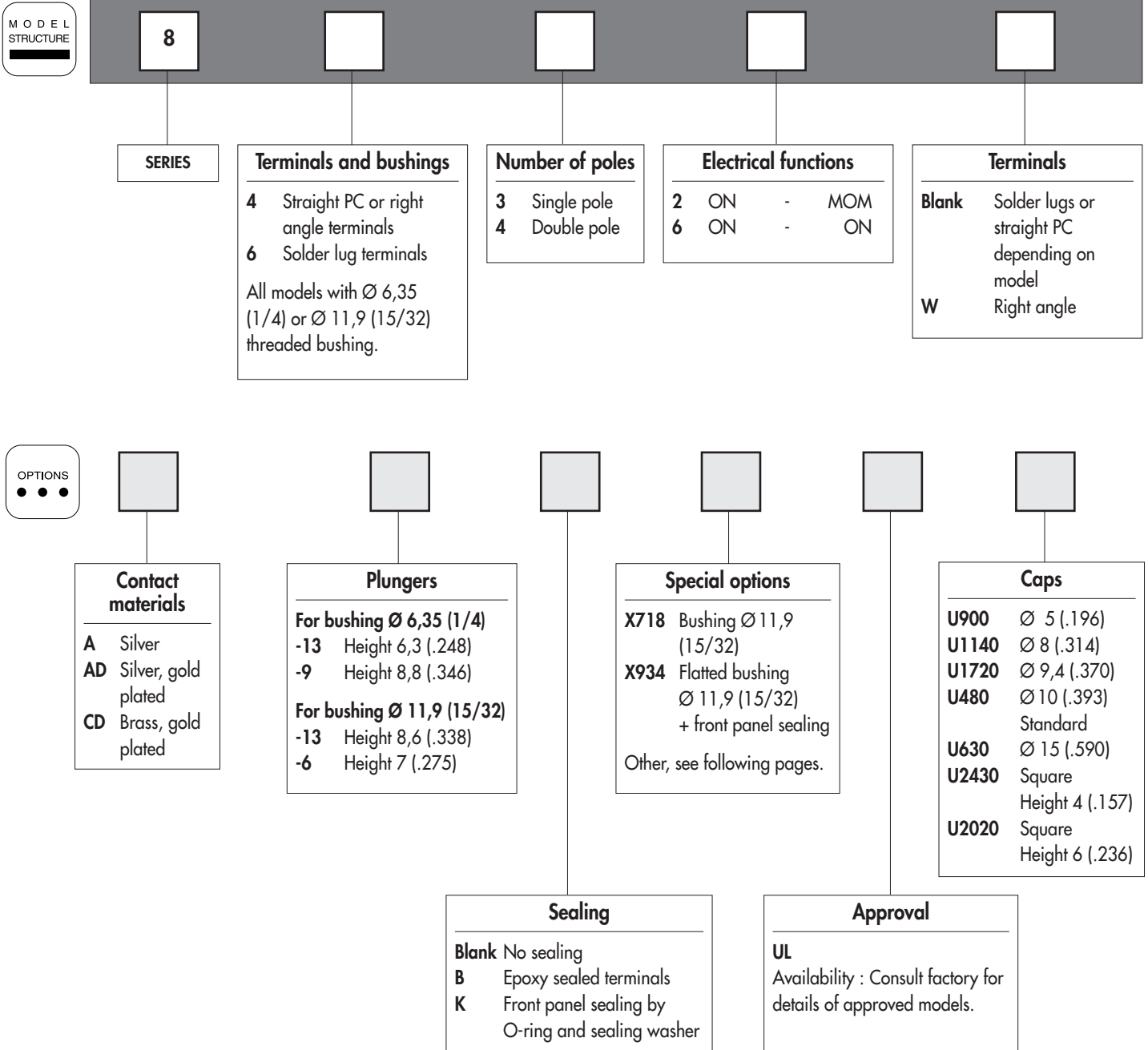
**Availability** : consult factory for details of approved models.

**Marking** : to order switches marked UL, complete appropriate box of ordering format.

# 8000 series

## Momentary or alternate action pushbutton switches

Overview



### ABOUT THIS SERIES

On the following pages, you will find successively :

- model structure of switches
- options in the same order as in above chart

**Dimensions** : first dimensions are in mm while inches are shown as bracketted numbers.



**Sealing boots** are available to protect the switches against dust and water. They are presented in section H.



**Mounting accessories** : standard hardware supplied with all models : 2 hex nuts 8 mm (.314) across flats, 1 locking ring and 1 lockwasher.

Standard and special hardware available are presented in section I.



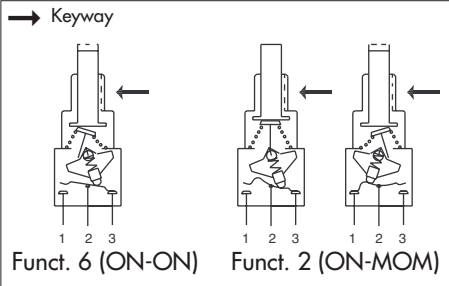
**Packaging unit** : 50 pieces, except 8000W (25 pieces).

# 8000 series

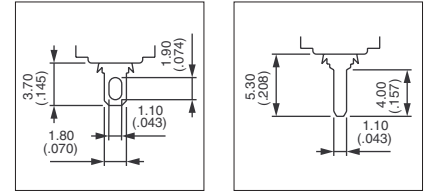
## Momentary or alternate action pushbutton switches

Threaded bushing  $\varnothing 6,35$  (1/4)

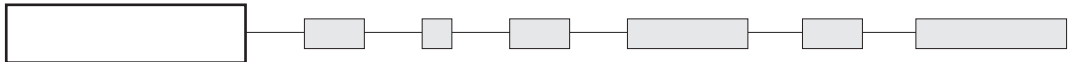
MODEL  
STRUCTURE



- Solder lug, straight PC or right angle terminals
- 1 and 2 pole configurations
- Button returns in upper position after actuation.



MODEL  
STRUCTURE



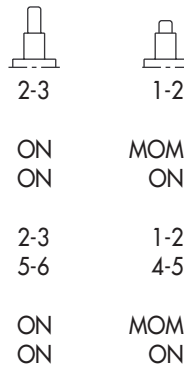
Shown with standard plunger (-13)

### Solder lug terminals : 8600

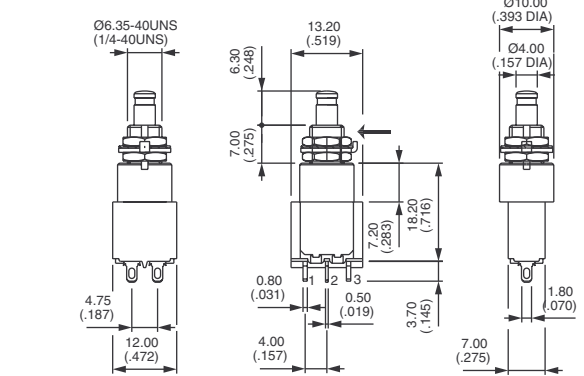


Single pole  
**8632**  
**8636**

Double pole  
**8642**  
**8646**



→ Keyway

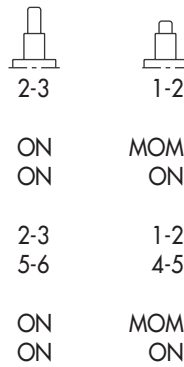


### Straight PC terminals : 8400

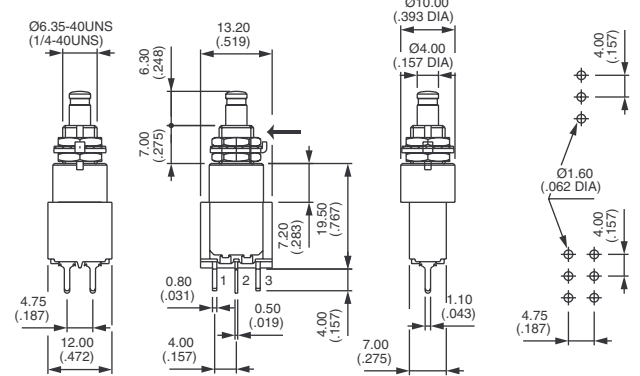


Single pole  
**8432**  
**8436**

Double pole  
**8442**  
**8446**



→ Keyway

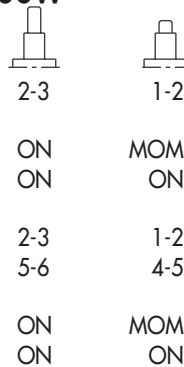


### Right angle terminals - horizontal : 8400W

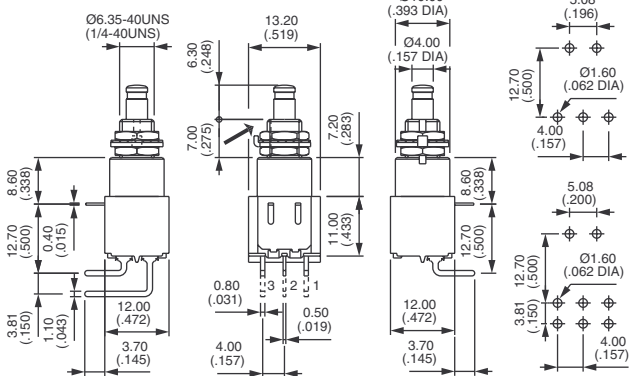


Single pole  
**8432W**  
**8436W**

Double pole  
**8442W**  
**8446W**



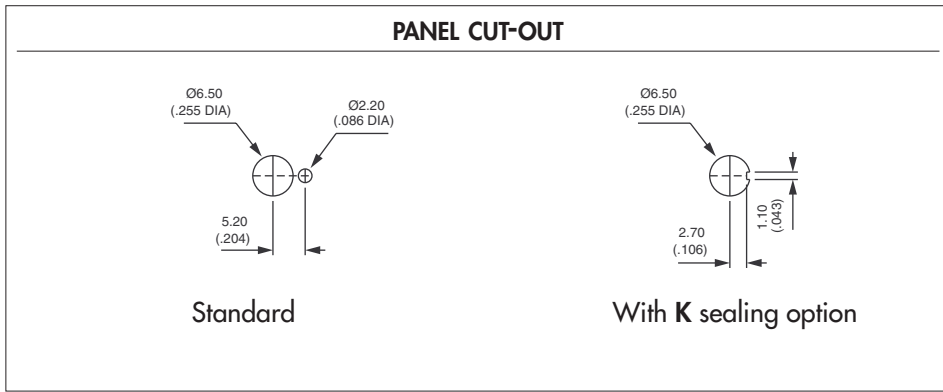
→ Keyway





# 8000 series

Momentary or alternate action pushbutton switches

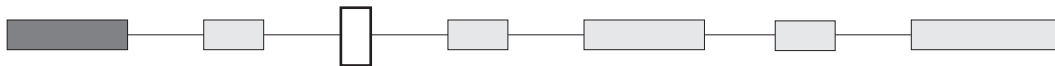


## CONTACT MATERIALS



- A** Silver
- AD** Silver, gold plated
- CD** Brass, gold plated

## SEALING



**Blank** No sealing

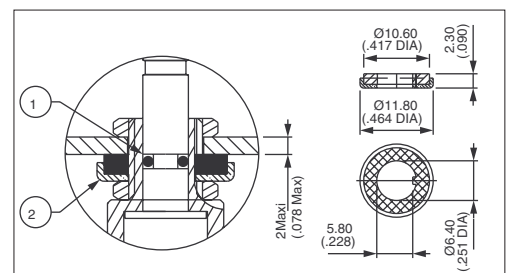
**B** Epoxy sealed terminals



**K** Front panel sealing by one O-ring and sealing washer. Protects the switch against water and dust. Panel seal withstands 1 bar pressure and remains sealed even when switch is operated.

**KB** Combined sealings

Sealing boot : see section H.



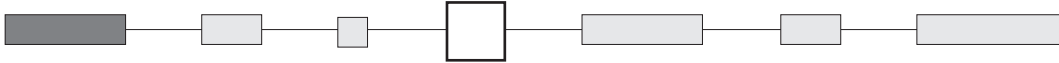
- ① O-ring
- ② Sealing washer

# 8000 series

Momentary or alternate action pushbutton switches

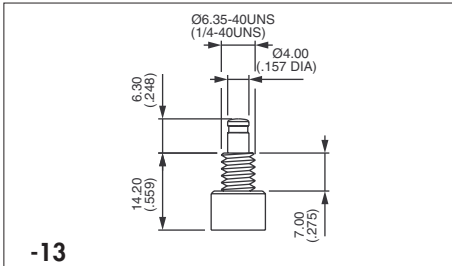


## PLUNGERS

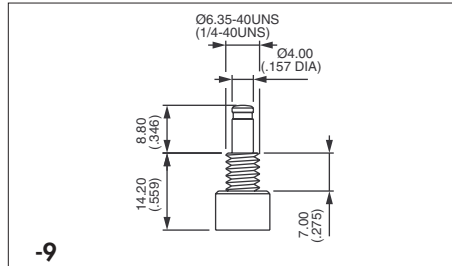


For  $\varnothing 6,35$  (1/4) bushing

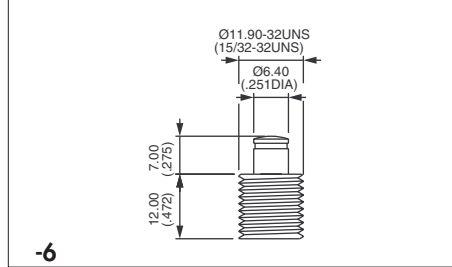
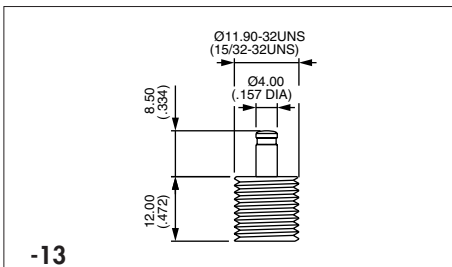
Dash compulsory before plunger code.



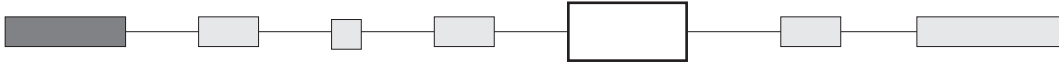
Standard



For  $\varnothing 11,9$  (15/32) bushing (X718 models)

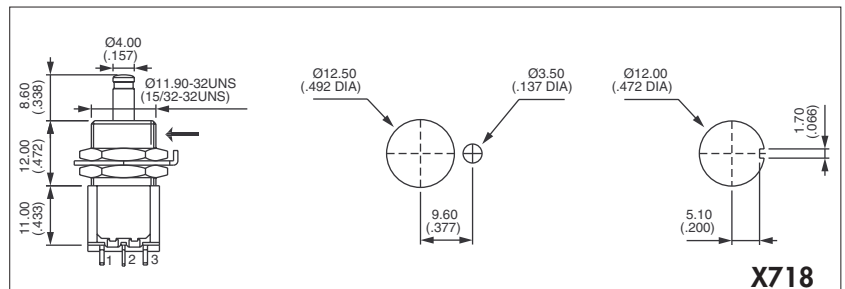


## SPECIAL OPTIONS



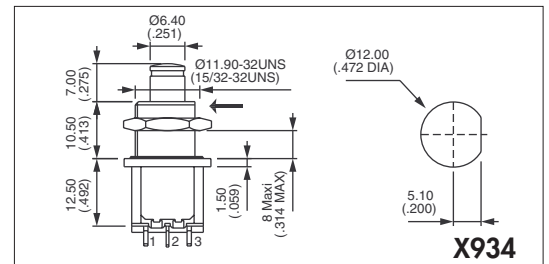
**X601** Silver plated brass contacts  
Current/voltage rating for an electrical life of 20.000 cycles :  
0,2A 250VAC - 0,4A 125VAC - 0,5A 30VDC.  
Minimum quantity : 5.000 pieces per model and shipment.

**X718** Bushing  $\varnothing 11,9$  (15/32)  
For all basic models (solder lug  
straight PC or right angle terminals)  
Available with plungers 13 and 6.  
K sealing option available.



**X748** Snap-in mounting. Consult factory  
Panel cut-out 15 x 12,5 (.59 x .492)

**X934** Flatted bushing  $\varnothing 11,9$  (15/32) + sealing by two O-rings  
(for plunger -6 only)



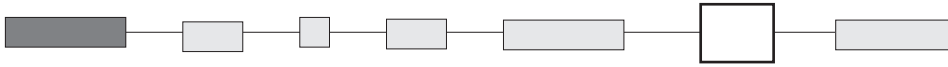
**F** Tin dipped terminals  
For PC terminal models with gold plated contacts only.  
Order with option B (epoxy sealing).



# 8000 series

## Momentary or alternate action pushbutton switches

### APPROVAL

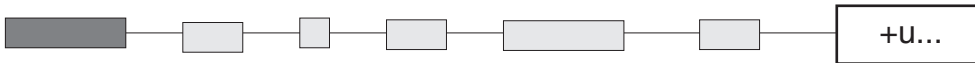


### UL

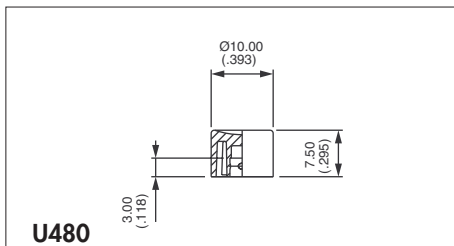
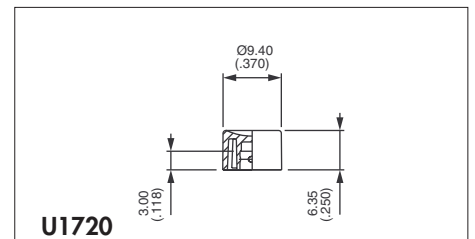
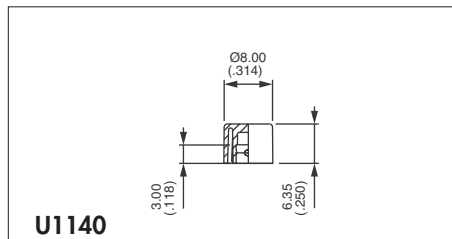
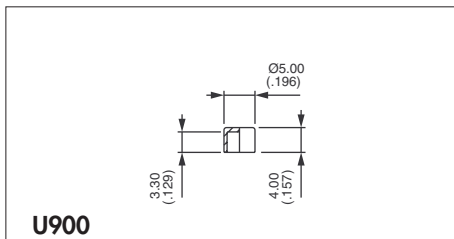
**Availability** : consult factory for details of approved models.

**Marking** : to order switches marked UL, complete above box with "UL".

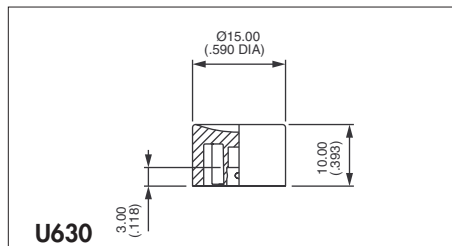
### CAPS



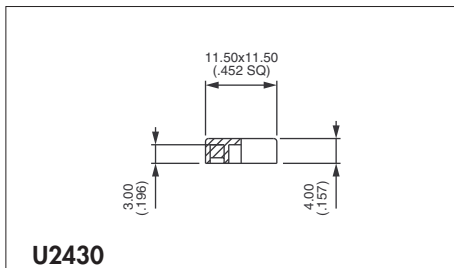
The caps below are for Ø 4 mm plungers (-13 and -9), except U2600.



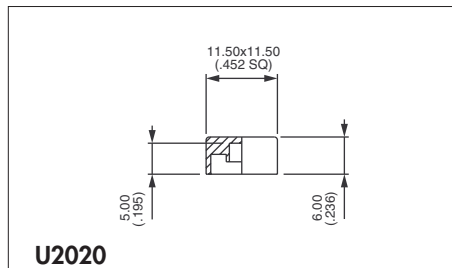
Standard



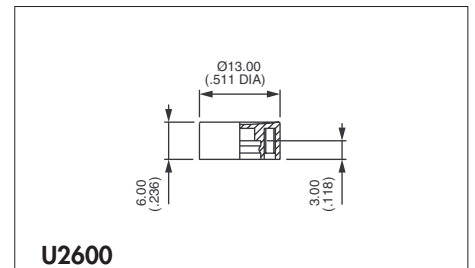
Cap colours	
Replace last "0" by number	
1	blue
1/4	dark blue
2	black
3	green
4	grey
5	yellow
6	red
7	ivory
7/1	white
9	orange



Square



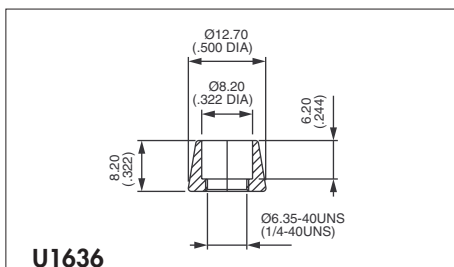
Square



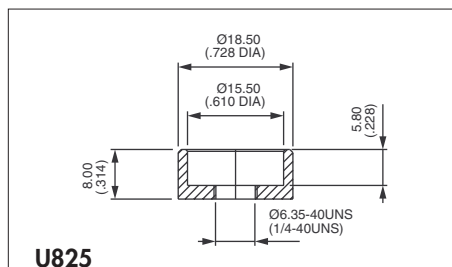
For large plunger -6 only.

### DRESS NUTS

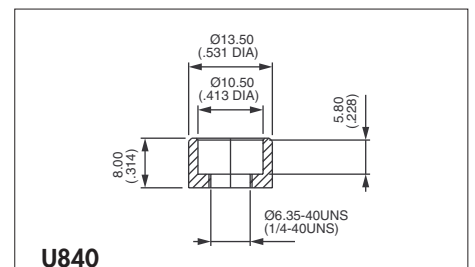
Chrome plated. Order separately.



For cap U1140



For cap U630



For cap U480

## X-ON Electronics

Largest Supplier of Electrical and Electronic Components

*Click to view similar products for [Pushbutton Switches](#) category:*

*Click to view products by [Apem](#) manufacturer:*

Other Similar products are found below :

[LW1L-M1C10V-A](#) [LW2L-A1C20M-GD](#) [LW2L-M1C20M-A](#) [60324L](#) [M7E-HRN2](#) [67021K512](#) [67081K512X](#) [701PB580](#) [719-5504-000](#)  
[MDPSSGLFS](#) [810KSV30B](#) [MML21KA3ABK](#) [MML23KA3AC05K-001](#) [MML23KW3AA01W](#) [8418K2](#) [8646AB6X718UL](#) [8646ABUL](#)  
[FSDWH](#) [9001KXRK](#) [9001T8BK](#) [9533CD4+U574+U4922](#) [1203MRA](#) [A22EM01S](#) [A595](#) [1202A6](#) [12037A2ULCSA](#) [1203A2UL](#) [ABD122N-](#)  
[B](#) [1211390004](#) [ABN111-Y](#) [ABN400-R](#) [1211500044](#) [1211580012](#) [1212MRA](#) [1232A6NF](#) [RA3CSH6A](#) [1241.1183.7047](#) [1241.2511](#)  
[1241.3428](#) [1223A2ULCSA](#) [1223MRA](#) [1232AX2119](#) [1241.1183.8000](#) [1241.1183.8029](#) [1241.2506](#) [1241.2606](#) [12MA6](#) [1301940184](#)  
[RELBARF6X10\(PLASTIC\)](#) [13435AG](#)