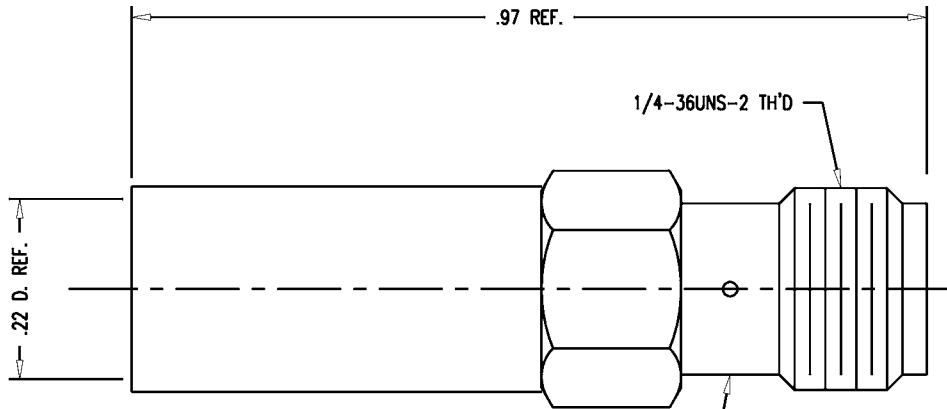
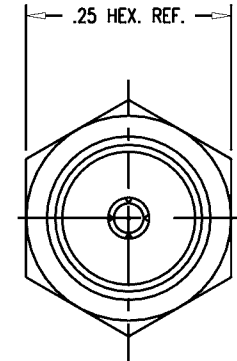


GSD

M39012/57-3502



STAMP: 91836 M39012/57-3502 XX XX (DATE CODE)



NOTES:

1. FOR USE WITH M17/60-RG142 AND M17/128-RG400 CABLES.
2. FOR CABLING INSTRUCTIONS SEE CP-493.
3. FOR TRIMMING USE KTJ-169 AND KTD-215.
4. FOR CRIMPING USE DIE KTH-2113.
5. INTERFACE PER MIL-STD-348, FIG. 310-1.
6. MARK PACKAGE: 91836 M39012/57-3502 873-18-3 XXXX (DATE CODE)
7. MATERIALS:
 INSULATOR-TEFLON, ASTM-D-4894
 K-GRIP SLEEVE-COMMERCIAL BRONZE, ASTM-B-135
 ALL OTHER METAL PARTS-BER. COP., ASTM-B-196
8. FINISHES:
 BODY-PASSIVATE PER QQ-P-35
 K-GRIP SLEEVE-KINGS TARNISH RESISTANT FINISH (TR-5)
 CENTER CONTACT-GOLD PLATE PER MIL-G-45204
9. ELECTRICAL CHARACTERISTICS:
 NOMINAL IMPEDANCE-50 OHMS
 FREQUENCY RANGE-DC TO 12.4 GHz

REVISIONS

ISSUE	CHANGES
12	CN 33974 D REDRAWN JCA 08/27/92
13	CN 35187 D JCA 11/29/93
14	CN 36497 A KH 08/03/95

JCA3063

SCALE 6:1	
APPROX SURFACE AREA	
873-18-3	
USED ON	
REF:	
JACK, SMA	
DRAWN JCA	DATE 08/27/92
DESIGN LJ	DATE 08/28/92
APPR.	DATE

KINGS
ELECTRONICS CO., INC.
TUCKAHOE, NEW YORK 10707

M39012/57-3502

GSD

X-ON Electronics

Largest Supplier of Electrical and Electronic Components

Click to view similar products for [RF Connectors](#) / [Coaxial Connectors](#) category:

Click to view products by [Winchester](#) manufacturer:

Other Similar products are found below :

[R125315120](#) [8915-1511-000](#) [89674-0827](#) [5916-1103-603](#) [0106-001-000](#) [6-0001-3](#) [6001-7071-019](#) [6002-7051-003](#) [6002-7551-202](#) [6059674-1](#) [619550-1](#) [630059-000](#) [M39012/25-0021](#) [M39012/79-3008](#) [M39030/3-01N](#) [M39030/3-03N](#) [M3933/25-29N](#) [M3933/25-36N](#) [6500-7071-046](#) [6501-1071-002](#) [M83723/72W24576](#) [M83723/72W2457N](#) [6769](#) [CX050L2AQ](#) [7002-1541-010](#) [7003-1572-002](#) [7004-1512-000](#) [7009-1511-004](#) [7010-1511-000](#) [7029-1511-060](#) [7101-1541-010](#) [7101-1571-002](#) [7105-1521-002](#) [7145-1521-002](#) [7209-1511-011](#) [7210-1511-012](#) [7210-1511-015](#) [7210-1511-019](#) [7210-1511-040](#) [7225-1512-050](#) [7242-1511-000](#) [73137-5015](#) [73216-2241](#) [73251-0111](#) [73251-0672](#) [73276-1501](#) [73366-0013](#) [73404-2300](#) [73413-6080](#) [734151610](#)