

- NOTES:
1. $\text{\textcircled{C}}$ REPRESENTS A CRITICAL DIMENSION
 2. MINIMUM PUSH OUT FORCE: .5 LB.
 3. MAXIMUM BURR ALLOWED: .002[.05].
 4. MAXIMUM CUT FLASH ALLOWED IN NON- CRITICAL AREA: .010[.25]. NO CUT FLASH ALLOWED IN CRITICAL AREAS AS SHOWN.
 5. MAXIMUM HEIGHT VARIATION .005[.13] BETWEEN ROWS.
 6. APPLIES TO FIRST AND LAST PIN OF EACH ROW.

PATENT NUMBERS
5713755 / 5961339

FTSH-1XX-XX-XXX-DH-XX

No OF POSITIONS
-02 THRU -50
(PER ROW)

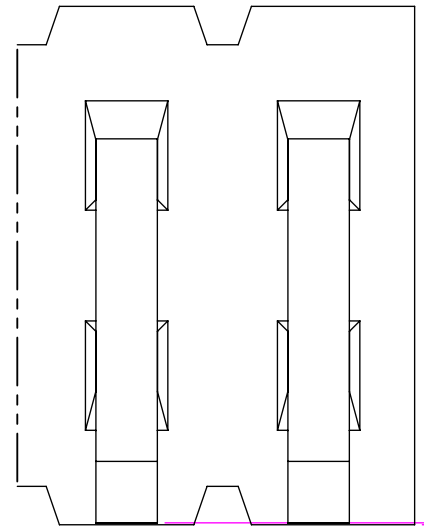
LEAD STYLE
-01: .120 [3.05]
-02: .075 [1.91]
-04: .150 [3.81]

- OPTIONS
- TR: TAPE AND REEL (SEE FIG 2, SHEET 2 & FIG 3, SHEET 3) (MOLDED TO POSITION OR STAKED) (SAMTEC DISCRETION WHICH -A PIN IS USED)
 - A: ALIGNMENT PIN (STAKED 6 POSITION MIN. SEE FIG 3, SHEET 3, USE FTSH-50-DH) (MOLDED 5 POSITION MIN. SEE FIG 2, SHEET 2, USE FTSH-50-DH-AXX)
 - C: POLYIMIDE FILM (USE K-DOT-.197-.344-.005) (SEE FIG 4, SHEET 3)

PLATING SPECIFICATION

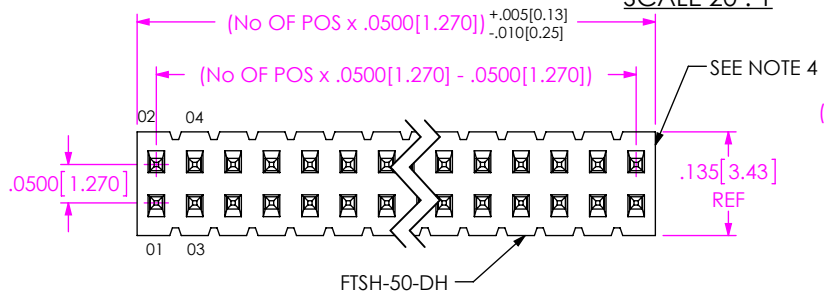
- L: 10 μ " SELECTIVE GOLD IN CONTACT AREA, MATTE TIN ON TAIL
- F: 3 μ " SELECTIVE GOLD IN CONTACT AREA, MATTE TIN ON TAIL
- S: 30 μ " SELECTIVE GOLD IN CONTACT AREA, MATTE TIN ON TAIL
- H: 30 μ " GOLD IN CONTACT AREA, 3 μ " GOLD ON TAIL
- LM: 10 μ " SELECTIVE GOLD IN CONTACT AREA, MATTE TIN ON TAIL
- FM: 3 μ " SELECTIVE GOLD IN CONTACT AREA, MATTE TIN ON TAIL
- SM: 30 μ " SELECTIVE GOLD IN CONTACT AREA, MATTE TIN ON TAIL
- LTL: 10 μ " SELECTIVE GOLD IN CONTACT AREA, TIN/LEAD (90/10+/-5%) TAIL
- G: 10 μ " GOLD IN CONTACT AREA, 3 μ " GOLD ON TAIL

TAIL OPTION
-DH: DOUBLE HORIZONTAL



$.000\pm.002$ [0.00 ± 0.05]
(SEE NOTE 6)

DETAIL 'B'
SCALE 20 : 1



2° MAX SWAY (EITHER DIRECTION)

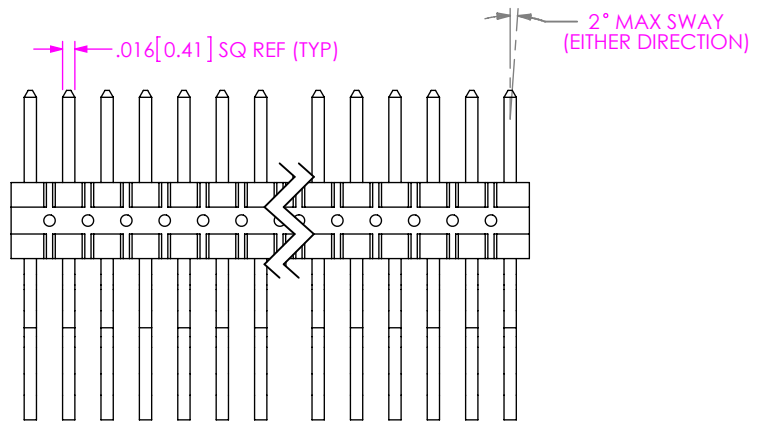
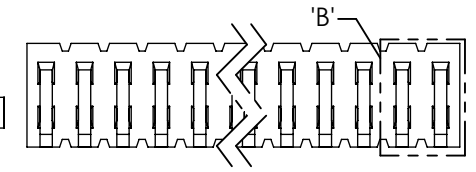
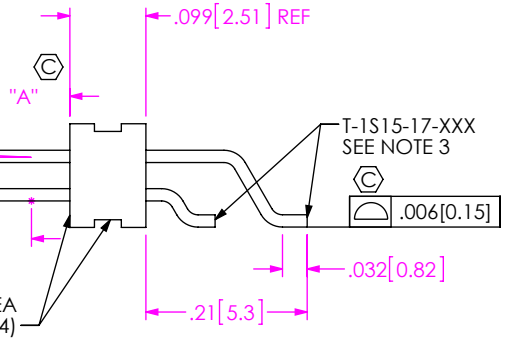


FIG 1
FTSH-1XX-XX-XXX-DH SHOWN

UNLESS OTHERWISE SPECIFIED, DIMENSIONS ARE IN INCHES.
TOLERANCES ARE:

DECIMALS	ANGLES
.XX: $\pm .01$ [.3]	2°
.XXX: $\pm .005$ [.13]	
.XXXX: $\pm .0020$ [.051]	

PROPRIETARY NOTE

THIS DOCUMENT CONTAINS CONFIDENTIAL AND PROPRIETARY INFORMATION AND ALL DESIGN, MANUFACTURING, REPRODUCTION, USE, PATENT RIGHTS AND SALES RIGHTS ARE EXPRESSLY RESERVED BY SAMTEC, INC. THIS DOCUMENT SHALL NOT BE DISCLOSED, IN WHOLE OR PART, TO ANY UNAUTHORIZED PERSON OR ENTITY NOR REPRODUCED, TRANSFERRED OR INCORPORATED IN ANY OTHER PROJECT IN ANY MANNER WITHOUT THE EXPRESS WRITTEN CONSENT OF SAMTEC, INC.



520 PARK EAST BLVD, NEW ALBANY, IN 47150
PHONE: 812-944-6733 FAX: 812-948-5047
e-Mail info@SAMTEC.com code 53322

MATERIAL: DO NOT SCALE DRAWING SHEET SCALE: 4:1

INSULATOR:
LCP, UL 94-V0 COLOR: BLACK

TERMINAL:
PHOSPHOR BRONZE, ALLOY No. 510, GRADE A, FED. SPEC.
QQ-B-750, SPRING TEMPER

DESCRIPTION:
.050 x .050 C.L. DOUBLE HORIZONTAL TERMINAL STRIP

DWG. NO.
FTSH-1XX-XX-XXX-DH-XX

BY: BRATCHER 01/04/1995 SHEET 1 OF 3

REVISION BQ

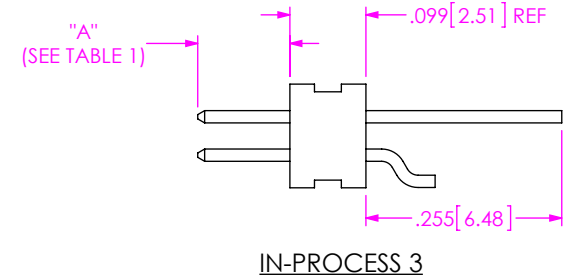
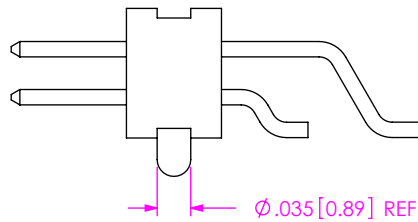
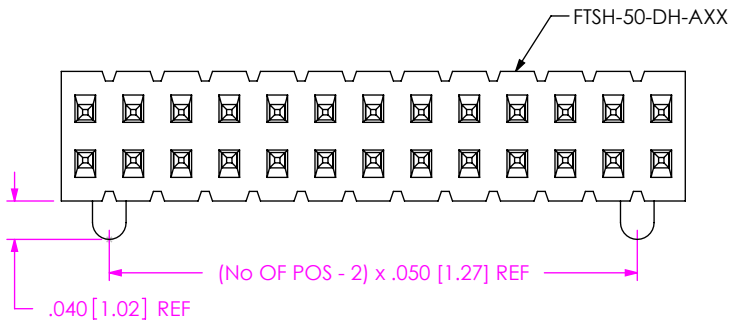
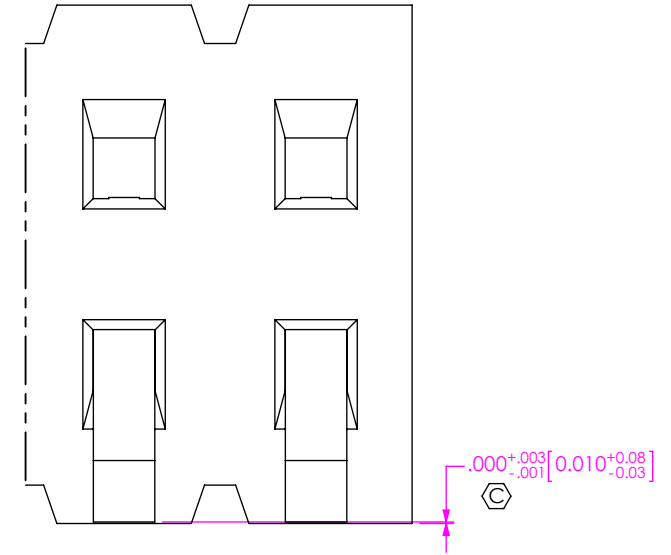
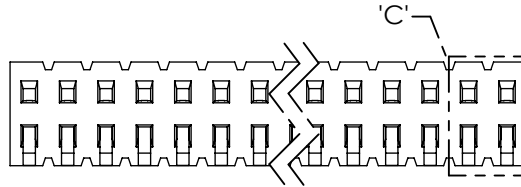
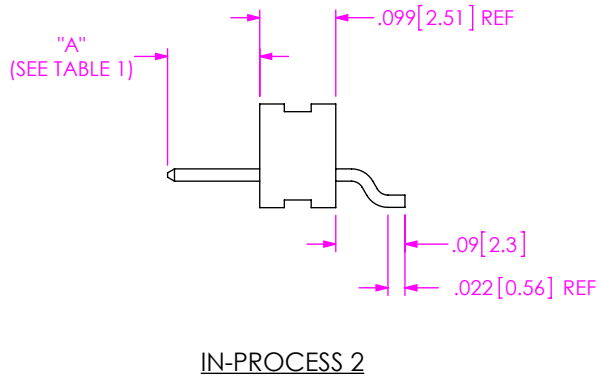
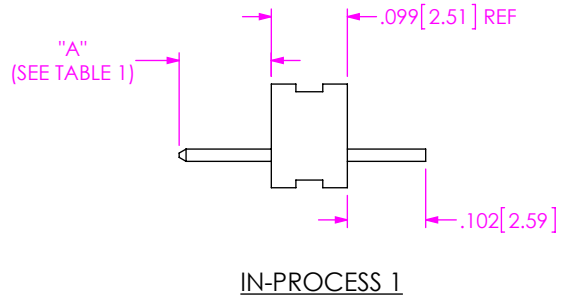


FIG 2
-A: ALIGNMENT PIN (MOLDED) OPTION
DIFFERENT AS SHOWN, OTHERWISE
SAME AS FIG 1

PROPRIETARY NOTE
THIS DOCUMENT CONTAINS CONFIDENTIAL AND PROPRIETARY INFORMATION AND ALL DESIGN, MANUFACTURING, REPRODUCTION, USE, PATENT RIGHTS AND SALES RIGHTS ARE EXPRESSLY RESERVED BY SAMTEC, INC. THIS DOCUMENT SHALL NOT BE DISCLOSED, IN WHOLE OR PART, TO ANY UNAUTHORIZED PERSON OR ENTITY NOR REPRODUCED, TRANSFERRED OR INCORPORATED IN ANY OTHER PROJECT IN ANY MANNER WITHOUT THE EXPRESS WRITTEN CONSENT OF SAMTEC, INC.

DO NOT SCALE DRAWING

SHEET SCALE: 2:1



520 PARK EAST BLVD, NEW ALBANY, IN 47150
PHONE: 812-944-6733 FAX: 812-948-5047
e-Mail info@SAMTEC.com code 53322

DESCRIPTION:
.050 x .050 C.L. DOUBLE HORIZONTAL TERMINAL STRIP

DWG. NO.
FTSH-1XX-XX-XXX-DH-XX

BY: BRATCHER 01/04/1995 SHEET 2 OF 3

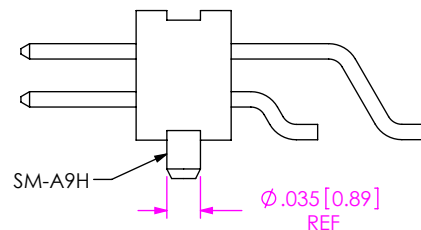
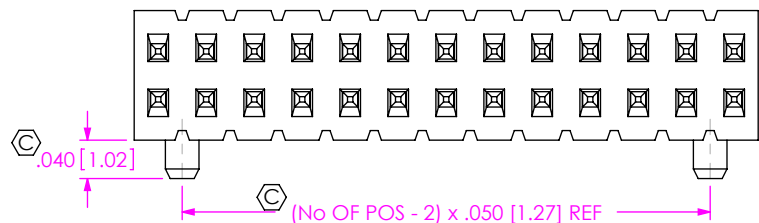


FIG 3
-A: ALIGNMENT PIN (STAKED) OPTION
DIFFERENT AS SHOWN, OTHERWISE
SAME AS FIG 2

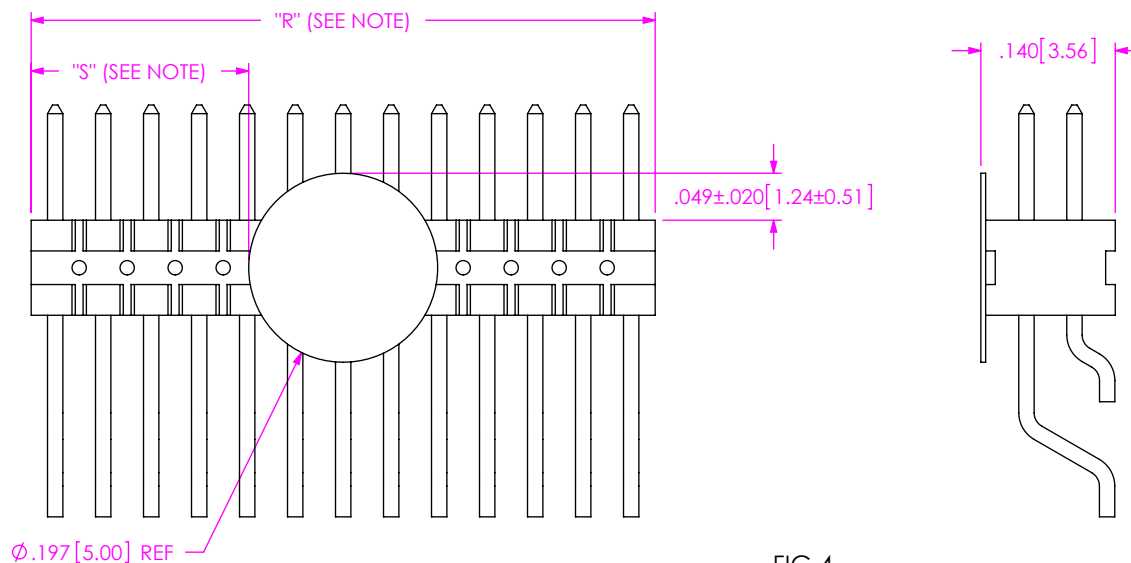
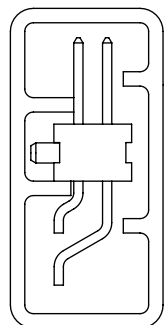


FIG 4
-C: POLYIMIDE FILM

NOTE: "R" = USED MEASURED DIMENSION (REF)
"S" = $((\text{"R"} - .1969 [5.001]) / 2) \pm .020 [0.51]$



PT-FTSH001-DH

PACKAGING NOTES:

1. PACKAGE POSITIONS 10 THROUGH 50 IN TUBES.
2. POSITIONS 02 THROUGH 09 ARE TO BE LAYER PACKAGED. EXCEPT FOR -C OPTION, TUBE POSITIONS 05 THROUGH 50.
3. ALL PART POSITIONS 05 THROUGH 50 USE PT-FTSH001-DH.
4. USE TP-24 PLUG.

PACKAGING VIEW

PROPRIETARY NOTE
THIS DOCUMENT CONTAINS CONFIDENTIAL AND PROPRIETARY INFORMATION AND ALL DESIGN, MANUFACTURING, REPRODUCTION, USE, PATENT RIGHTS AND SALES RIGHTS ARE EXPRESSLY RESERVED BY SAMTEC, INC. THIS DOCUMENT SHALL NOT BE DISCLOSED, IN WHOLE OR PART, TO ANY UNAUTHORIZED PERSON OR ENTITY NOR REPRODUCED, TRANSFERRED OR INCORPORATED IN ANY OTHER PROJECT IN ANY MANNER WITHOUT THE EXPRESS WRITTEN CONSENT OF SAMTEC, INC.

DO NOT SCALE DRAWING

SHEET SCALE: 2:1



520 PARK EAST BLVD, NEW ALBANY, IN 47150
PHONE: 812-944-6733 FAX: 812-948-5047
e-Mail info@SAMTEC.com code 55322

DESCRIPTION:
.050 x .050 C.L. DOUBLE HORIZONTAL TERMINAL STRIP

DWG. NO.
FTSH-1XX-XX-XXX-DH-XX

BY: BRATCHER 01/04/1995 SHEET 3 OF 3

X-ON Electronics

Largest Supplier of Electrical and Electronic Components

Click to view similar products for [samtec](#) manufacturer:

Other Similar products are found below :

[MTMM-105-09-H-D-390](#) [YTW-20-07-H-6-520-110](#) [TW-10-08-H-D-616-107](#) [TW-15-08-H-D-600-080](#) [TW-30-08-H-D-616-107](#) [MTMM-108-05-H-D-220](#) [MTMM-120-06-H-D-180](#) [MTMM-103-05-H-D-220](#) [SSM-105-H-DV-A-P-TR](#) [ERCD-060-19.00-TEU-TBL-1-3](#) [SSQ-108-01-SM-S](#) [SSQ-105-01-SM-S](#) [ACD-185680-02](#) [ESQT-112-02-F-D-375](#) [ESQT-135-03-F-D-380](#) [FTSH-111-01-L-DV](#) [QTE-060-01-L-D-A](#) [MSAS-179-ZUGG-18](#) [MTMM-103-05-H-D-300](#) [MTMM-142-05-H-D-126](#) [MTSW-103-07-F-S-240](#) [MTSW-125-24-H-D-285](#) [ERF8-020-05.0-S-DV-K-TR](#) [IDMD-10-T-12.00-A-G-R](#) [IPL1-112-01-L-D-K](#) [IPL1-116-01-H-D](#) [SFM-107-02-S-D-LC](#) [SFML-115-01-S-D](#) [SFML-125-01-S-D](#) [SFSDT-15-28-H-04.50-DR-NDS](#) [LSHM-120-02.5-L-DV-A-N-K-TR](#) [SMS-125-02-S-D](#) [ESQ-110-14-G-D](#) [ESQT-125-03-F-D-310](#) [ESQT-133-03-F-D-350](#) [SO-0515-01-01-02](#) [SQW-120-01-F-D-VS-A](#) [SSW-110-02-H-D](#) [FJH-50-D-12.00-4](#) [CES-150-01-T-D](#) [QFS-052-01-SL-D-RA](#) [QTE-040-04-L-D-A](#) [QTH-020-04-F-D-DP-A-K-TR](#) [QTH-060-01-F-D-A](#) [QTH-090-04-L-D-A](#) [TCSD-10-S-05.00-01-F-N](#) [TFM-110-02-S-D](#) [TFM-115-02-L-DH](#) [TFM-120-12-S-D-LC](#) [TFML-140-02-S-D](#)