

8HM73-3

M

DRAWING NUMBER

X

X

ISSUE

3

REPLACES

RELEASE NO. PR-12989

CHECK

08DEC08

RS

CHECK

84

MAY

3

KAG

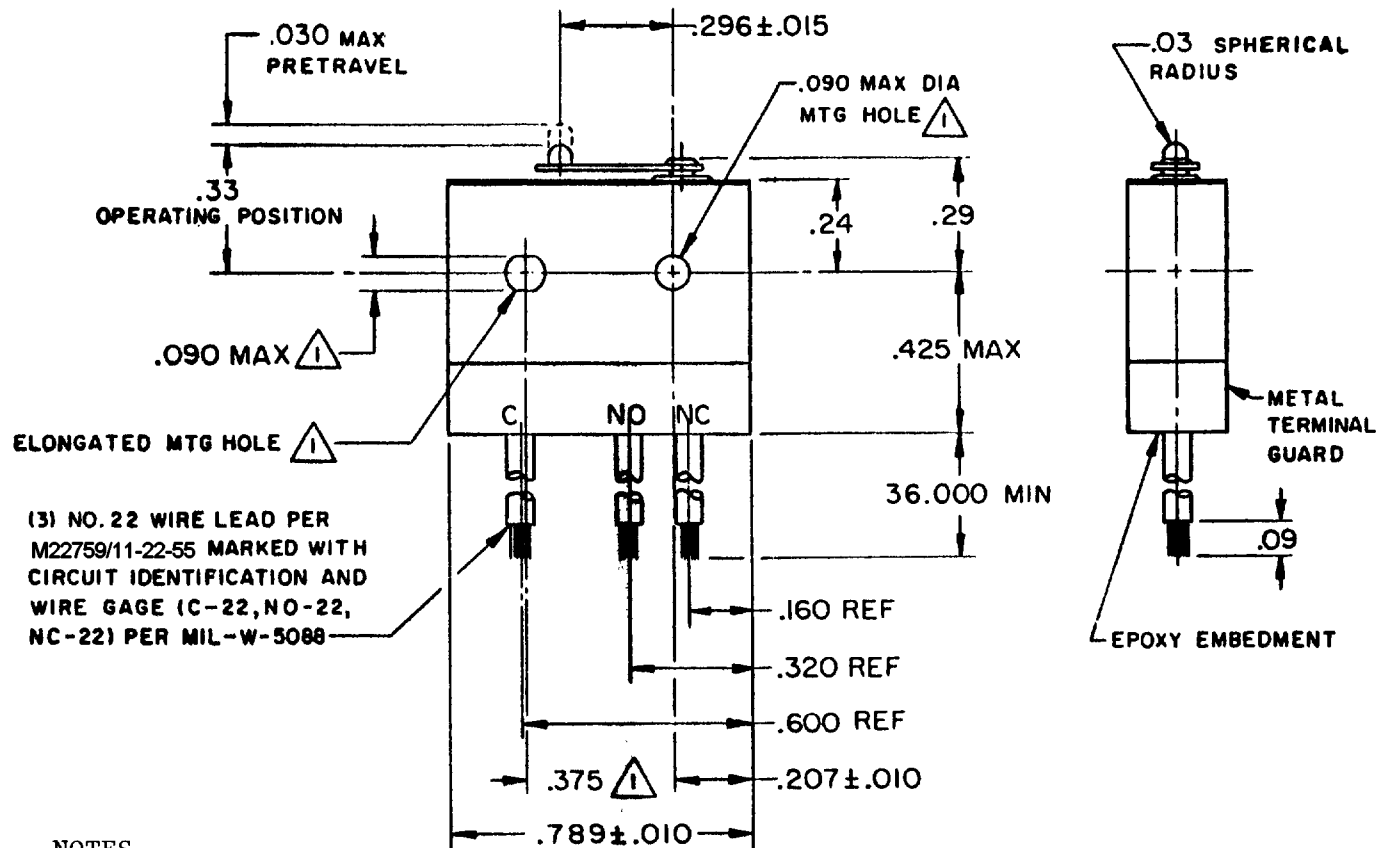
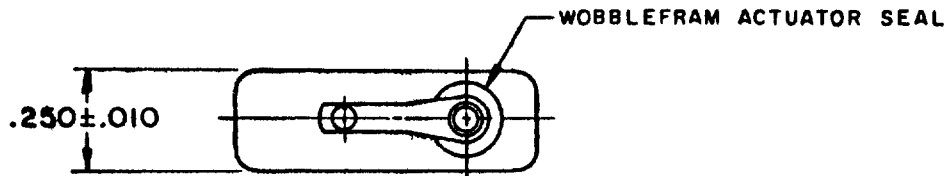
CHECK

26

APR

84

KJS



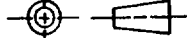
(3) NO. 22 WIRE LEAD PER M22759/11-22-55 MARKED WITH CIRCUIT IDENTIFICATION AND WIRE GAGE (C-22, NO-22, NC-22) PER MIL-W-5089

NOTES

- 1 MOUNTING HOLES WILL ACCEPT PINS OR SCREWS OF .087 MAX DIA ON .375 ± .002 CENTERS
- 2 - FOR USE IN TEMP. RNG. -85°F TO 250°F (DOWN TO -300°F IF WIRE LEADS ARE NOT FLEXED)
- 3 - HERMETICALLY SEALED (METAL-TO-METAL, GLASS-TO-METAL)
- 4 - ALL EXPOSED PARTS ARE OF CORROSION RESISTANT MATERIALS
- 5 WT OF SW. ONLY IS 0.22 OZ MAX. WT. OF CNDCT. GROUP ONLY IS 0.20 OZ MAX/FOOT
- 6 - DO NOT APPLY MORE THAN 1 1/2 IN LB OF TRQ WHEN TIGHTENING MOUNTING SCREWS
- 7 - 24K GOLD MOVABLE CONTACT
- 8 - GOLD ALLOY STATIONARY CONTACTS

THIS DRAWING COVERS A PROPRIETARY ITEM AND IS THE PROPERTY OF MICRO SWITCH, A DIVISION OF HONEYWELL. THIS DRAWING IS NOT TO BE COPIED OR USED WITHOUT THE APPROVAL OF MICRO SWITCH.

THIRD ANGLE PROJECTION



CHARACTERISTICS

OPERATING FORCE-----7 OZ MAX
 RELEASE FORCE-----1 OZ MIN
 DIFFERENTIAL TRAVEL-----.006 MAX
 OVERTRAVEL-----.003 MIN

ELECTRICAL DATA

CONTACT ARRANGEMENT
 S P D T

28 VOLTS DC RATING

INDUCTIVE-----SEA LEVEL-1/4 AMP
 70,000 FT--1/4 AMP
 RESISTIVE-----SEA LEVEL--1 AMP
 70,000 FT--1 AMP

SCALE 2:1

DO NOT SCALE PRINT

TOLERANCES

APPLY TO DESIGN UNITS. CONVERSIONS ARE ONLY FOR REFERENCE UNLESS NOTED. TOLERANCES ARE ±

	DIM. mm	TOL. mm/in	DIM. in	TOL. mm/in
NO PLACES	X	1/.04	X	0.01/03
ONE PLACE	X,X	0.47/018	X,X	0.387/018
TWO PLACES	X,X,X	0.167/006	X,X,X	0.157/006
THREE PLACES	X,X,X,X		X,X,X,X	
ANGLES				

DESIGN UNITS BI METRIC

US CUSTOMARY

WEIGHT

5

RASTER

FO-52848-A

DRAWN

26 APR 84

X-ON Electronics

Largest Supplier of Electrical and Electronic Components

Click to view similar products for [Basic / Snap Action Switches](#) category:

Click to view products by [Honeywell](#) manufacturer:

Other Similar products are found below :

[83228001](#) [01.098.1358.1](#) [602EN1-6B](#) [602EN532](#) [602EN535-RB](#) [602HE5-RB1](#) [604HE162](#) [604HE223-6B](#) [624HE17-RB](#) [6HM89](#) [6PA78-JM](#)
[6SE1](#) [6SX1-H58](#) [70500840](#) [MBD5B1](#) [MBH2731](#) [73-316-0012](#) [79211759](#) [79211923](#) [79218589](#) [7AS12](#) [ML-1155](#) [ML-1376](#) [831010C3.0](#)
[831060C3.TL](#) [831090C2.EL](#) [83131904](#) [84212012](#) [8AS239](#) [8HM73-3](#) [903VB1-PG](#) [914CE1-6G](#) [PL-100](#) [11SM1077-H4](#) [11SM1077-H58](#)
[11SM1-TN107](#) [11SM405](#) [11SM703-T](#) [11SM8423-H2](#) [11SX37-T](#) [11SX48-H58](#) [11SX55-H58](#) [11SM2442-T](#) [11SM76-T](#) [11SM77-H58](#)
[11SM77-T](#) [11SM863-T](#) [11SM866](#) [11SX47-H58](#) [A7CN-1M-1-LEFT](#)