

## **FEATURES**

- \* 0.3 inch (7.62-mm) DIGIT HEIGHT.
- \* CONTINUOUS UNIFORM SEGMENTS.
- \* LOW POWER REQUIREMENT.
- \* EXCELLENT CHARACTERS APPEARANCE.
- \* HIGH BRIGHTNESS & HIGH CONTRAST.
- \* WIDE VIEWING ANGLE.
- \* SOLID STATE RELIABILITY.
- \* CATEGORIZED FOR LUMINOUS INTENSITY.

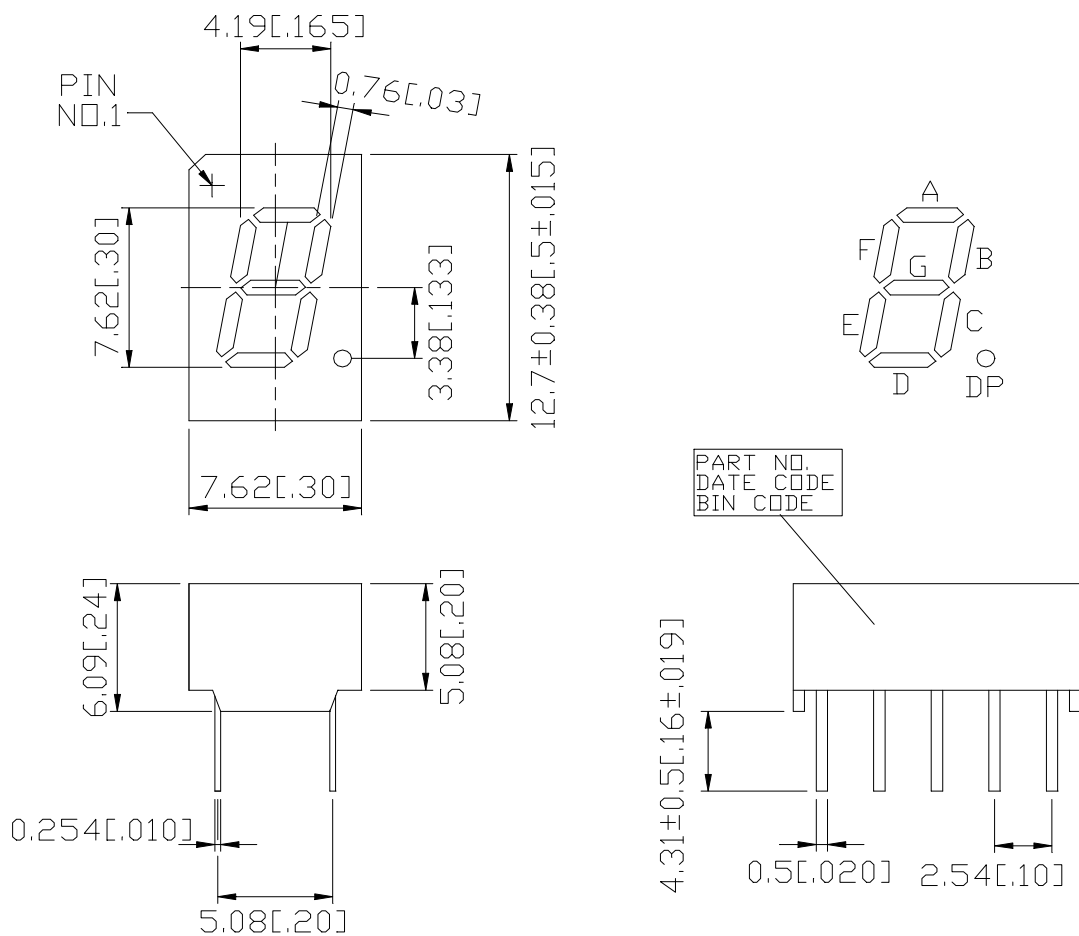
## **DESCRIPTION**

The LTS-3361JG-06 is a 0.3inch (7.62mm) height digit display. The device utilizes AlInGaP Green LED chips, which are made from AlInGaP on a non-transparent GaAs substrate, and have light gray face and white segments.

## **DEVICE**

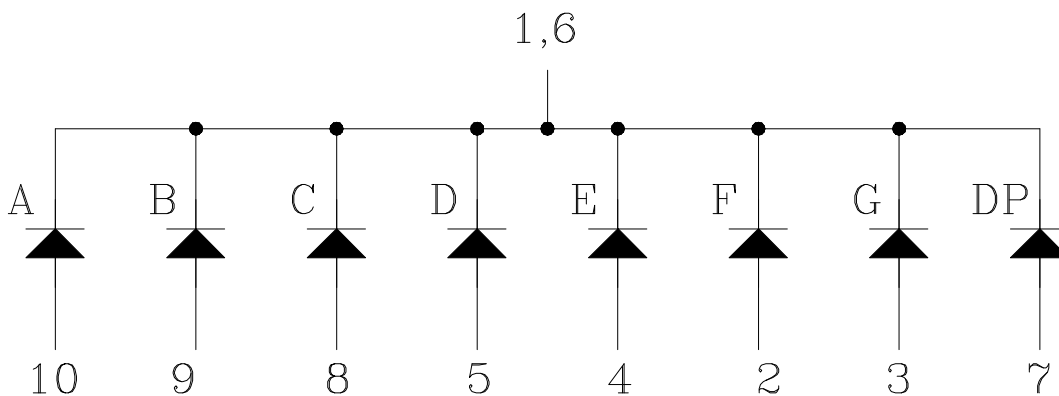
<b>PART NO.</b>	<b>DESCRIPTION</b>
AlInGaP Green	COMMON CATHODE RT. HANDE DECIMAL
LTS-3361JG-06	

## PACKAGE DIMENSIONS



- NOTES: 1. All dimensions are in millimeters. Tolerances are  $\pm 0.25$  mm (0.01") unless otherwise noted.  
 2. Pin tip's shift tolerance are  $\pm 0.40$  mm

## INTERNAL CIRCUIT DIAGRAM



**PIN CONNECTION**

<b>No.</b>	<b>CONNECTION</b>
1	COMMON CATHODE
2	ANODE F
3	ANODE G
4	ANODE E
5	ANODE D
6	COMMON CATHODE
7	ANODE DP
8	ANODE C
9	ANODE B
10	ANODE A

## ABSOLUTE MAXIMUM RATING AT Ta=25°C

PARAMETER	MAXIMUM RATING	UNIT
Power Dissipation Per Segment	70	mW
Peak Forward Current Per Segment ( 1/10 Duty Cycle, 0.1ms Pulse Width )	60	mA
Continuous Forward Current Per Segment	25	mA
Derating Linear From 25°C Per Segment	0.33	mA/°C
Reverse Voltage Per Segment	5	V
Operating Temperature Range	-55°C to +105°C	
Storage Temperature Range	-55°C to +105°C	
Solder Temperature: max 260°C for max 3sec at 1.6mm[1/16inch] below seating plane. Or temperature of unit (during assembly) not over max temperature above		

**Guarantee -55'C/30min ~ 105'C/30min , 80 cycles**

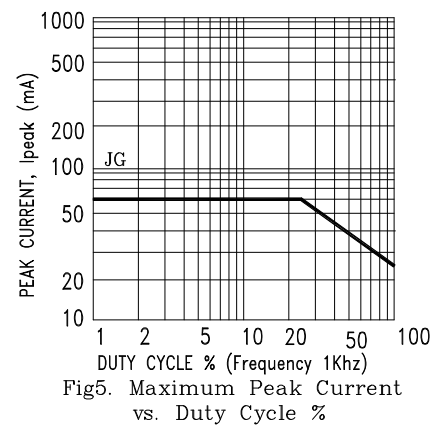
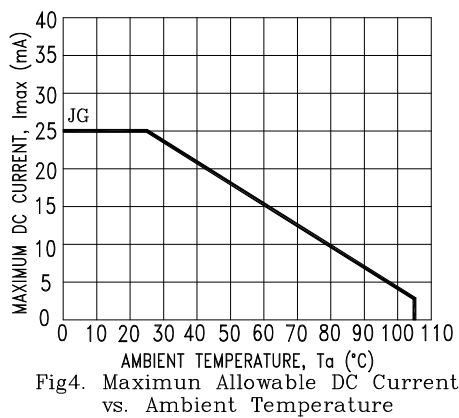
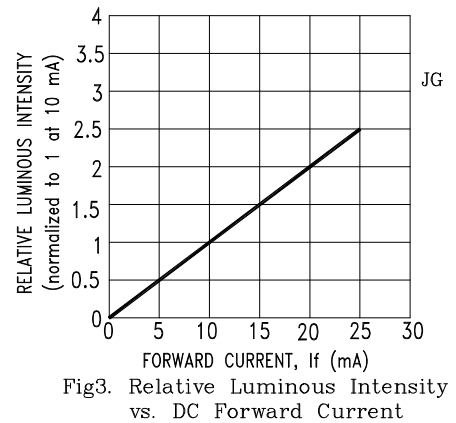
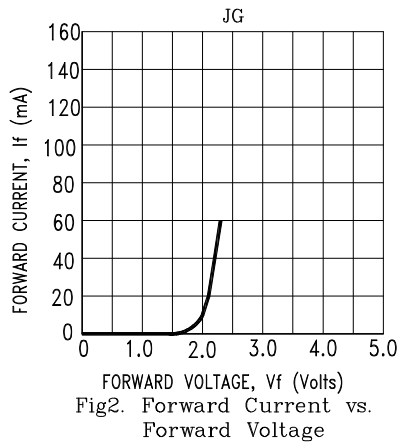
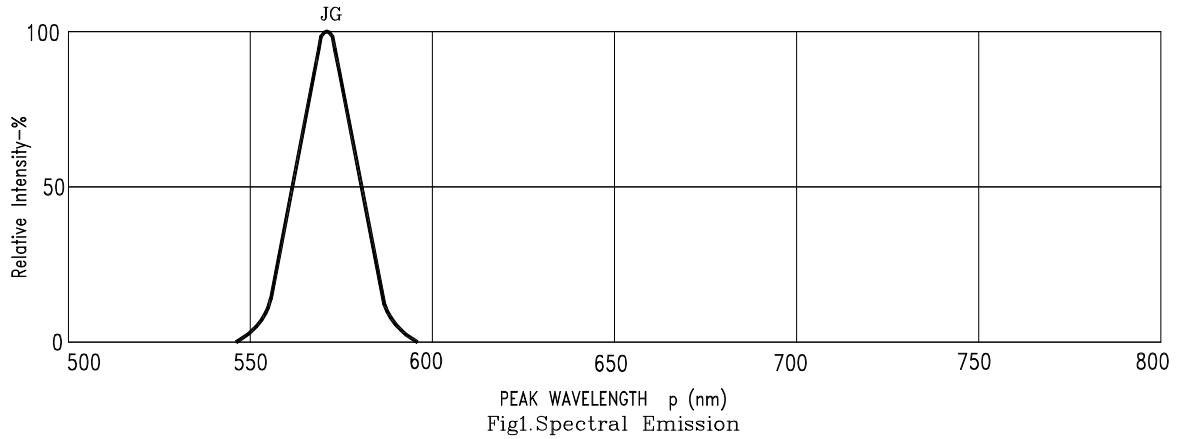
## ELECTRICAL / OPTICAL CHARACTERISTICS AT Ta=25°C

PARAMETER	SYMBOL	MIN.	TYP.	MAX.	UNIT	TEST CONDITION
Average Luminous Intensity	I <sub>v</sub>	200	800		μcd	I <sub>F</sub> =1mA
Peak Emission Wavelength	λ <sub>p</sub>		571		nm	I <sub>F</sub> =20mA
Spectral Line Half-Width	Δλ		15		nm	I <sub>F</sub> =20mA
Dominant Wavelength	λ <sub>d</sub>		572		nm	I <sub>F</sub> =20mA
Forward Voltage Per Segment	V <sub>F</sub>		2.05	2.6	V	I <sub>F</sub> =20mA
Reverse Current Per Segment	I <sub>R</sub>			100	μA	V <sub>R</sub> =5V
Luminous Intensity Matching Ratio (Similar Light Area)	I <sub>v-m</sub>			2:1		I <sub>F</sub> =1mA

Note: Luminous intensity is measured with a light sensor and filter combination that approximates the CIE (Commision Internationale De L'Eclairage) eye-response curve.

## TYPICAL ELECTRICAL / OPTICAL CHARACTERISTIC CURVES

(25°C Ambient Temperature Unless Otherwise Noted)



NOTE : JG=AlInGaP Green



## Reliability Test Report

Evaluation test

Part Number: **LTS-3361JG-06**  
 Product type: **Numeric Display**  
 Date code: **-**  
 Lot Number: **-**  
 Request No: **RQN7837**  
 Date of Request: **14-n.o.-07**  
 Test Purpose: **Customer request**  
 Test Period: **14-September ~ 12-October-2007**  
 Requester: **Anon**  
 Page: **1/13**

**Test summary table.**

Symbol	Test Item	Test condition	S/S	Result
TC	Temp cycling	105°~55°C, 30~30Min, 100Cycle,150Cycle,200Cycle,500Cycle	11	0/11

**Spec limit of Product.**

Characteristic	Measurement condition	Symbol	Min	Max	Unit
Illumination intensity	IF = 1mA	IV	≡	-	μcd
Forward Voltage	IF = 20mA	VF	-	2.6	V
Reverse Current	VR = 5V	IR	-	100	μA

**Reliability criteria:**

1. Reading value for each step test not over 20% Delta for VF parameter.
2. Reading value for each step test not over 50% Delta for IV parameter.
3. Reading value for each step test not over data sheet spec limit for IR parameter.

**Final Conclusion of reliability test:**

All samples unit under test are conforming to reliability criteria.

**Lab's comment:**

- Effect this the results relate only to the items tested
- The report shall not be reproduced except in full, without the written approval of the laboratory.

Test Operator           Lumpley          

Report Checker           Srinath          

Approve           Srinath

## X-ON Electronics

Largest Supplier of Electrical and Electronic Components

*Click to view similar products for [LED Displays & Accessories](#) category:*

*Click to view products by [Lite-On](#) manufacturer:*

Other Similar products are found below :

[LTC-2721WC](#) [LTC-4624JD](#) [LTC-4627G](#) [LTC-4627WC](#) [LTD-5021AWC](#) [LTM-8522G](#) [LTP-4323P](#) [LTP-747G](#) [LTS-3361JG-06](#)  
[F416SYGWA/S530-E3](#) [EADST040RA2](#) [1668](#) [HT-F196NB-5323](#) [IPD2131-27](#) [SA03-12EWA](#) [LDD-E2802RD](#) [LDD-E306MI](#) [LDQ-N514RI](#)  
[LDS-A3506RD](#) [LDS-A3926RI](#) [LDT-M516RI](#) [SC03-12HDB](#) [SI-B9T151550WW](#) [SI-B9V171550WW](#) [SLC-3PF-WL](#) [1624](#) [LTC-2621JD](#)  
[LTC-2623WC](#) [LTC-4624P](#) [LTC-4627JD](#) [LTD-2601E](#) [LTD-322G](#) [LTD-482PC](#) [LTP-1457AKR](#) [LTP-3784G-01](#) [LTS-313AP](#) [LTS-4812SKR-](#)  
[P](#) [LTS-547AE](#) [LTS-6780P](#) [446010401-3](#) [HV-7W30-6829](#) [CA12240\\_MINNIE-WWW-MTG-ASSY](#) [DA43-11GWA](#) [LDD-A516RI-17](#) [LDD-](#)  
[E305RI](#) [LDQ-M513RI](#) [LDQ-M5204RI-SI](#) [LDQ-N3402RI](#) [LDQ-N3606RI](#) [LDS-A3924RI-SI](#)