





SMT Power Inductors

Shielded Drum Core - PG0087NL Series



-  **Height:** 2.0mm Max
-  **Footprint:** 6.2mm x 6.2mm Max
-  **Current Rating:** up to 3.5A
-  **Inductance Range:** 0.9μH to 4.5mH

Electrical Specifications @ 25°C - Operating Temperature -40°C to +130°C¹

| Part ^{2,3} Number | Inductance @ OADC (μH ±20%) | Inductance @ Irated (μH TYP) | Irated ⁵ (A) | DCR (Ω) | | Saturation ⁶ Current -10% (A) | Heating ⁷ Current IDC +40°C (A) | Core Loss ⁸ Factor (K2) | SRF (MHz) |
|-------------------------------|-----------------------------------|------------------------------------|----------------------------|---------|-------|--|--|--|--------------|
| | | | | TYP | MAX | | | | |
| PG0087.102NL | 1.0 | 0.9 | 3.5 | 29 | 33 | 3.5 | 5.5 | 710 | >40 |
| PG0087.152NL | 1.5 | 1.3 | 3.0 | 23 | 34 | 3.0 | 4.9 | 870 | >40 |
| PG0087.222NL | 2.2 | 1.9 | 2.2 | 40 | 45 | 2.2 | 4.2 | 1100 | >40 |
| PG0087.332NL | 3.3 | 2.9 | 2.0 | 47 | 55 | 2.0 | 3.3 | 1200 | >40 |
| PG0087.472NL | 4.7 | 4.2 | 1.75 | 64 | 70 | 1.75 | 2.8 | 1600 | >40 |
| PG0087.682NL | 6.8 | 6.1 | 1.50 | 97 | 105 | 1.50 | 2.4 | 1700 | 37 |
| PG0087.103NL | 10 | 9.0 | 1.20 | 111 | 124 | 1.20 | 2.2 | 2200 | 34 |
| PG0087.153NL | 15 | 13 | 0.94 | 198 | 205 | 0.94 | 1.6 | 2700 | 28 |
| PG0087.223NL | 22 | 19 | 0.80 | 248 | 280 | 0.80 | 1.5 | 3400 | 22 |
| PG0087.333NL | 33 | 29 | 0.65 | 342 | 386 | 0.65 | 1.2 | 4000 | 17 |
| PG0087.473NL | 47 | 42 | 0.54 | 525 | 594 | 0.54 | 0.95 | 4900 | 15 |
| PG0087.683NL | 68 | 61 | 0.43 | 656 | 710 | 0.43 | 0.80 | 6100 | 13 |
| PG0087.104NL | 100 | 90 | 0.36 | 1180 | 1200 | 0.36 | 0.65 | 7000 | 10 |
| PG0087.154NL | 150 | 130 | 0.30 | 1740 | 1850 | 0.30 | 0.52 | 8200 | 9.0 |
| PG0087.224NL | 220 | 190 | 0.25 | 2600 | 2700 | 0.25 | 0.42 | 10000 | 7.0 |
| PG0087.334NL | 330 | 290 | 0.20 | 3810 | 3950 | 0.20 | 0.36 | 13000 | 5.4 |
| PG0087.474NL | 470 | 420 | 0.15 | 6147 | 6240 | 0.15 | 0.28 | 15000 | 4.3 |
| PG0087.604NL | 600 | 540 | 0.13 | 6716 | 7160 | 0.13 | 0.26 | 17000 | 4.1 |
| PG0087.684NL | 680 | 610 | 0.10 | 8947 | 9190 | 0.10 | 0.22 | 18000 | 3.9 |
| PG0087.824NL | 820 | 730 | 0.08 | 10800 | 11440 | 0.08 | 0.20 | 19000 | 3.5 |
| PG0087.105NL | 1000 | 900 | 0.06 | 11655 | 12570 | 0.06 | 0.18 | 21000 | 2.7 |
| PG0087.205NL | 2000 | 1800 | 0.05 | 23200 | 24900 | 0.05 | 0.14 | 30000 | 1.9 |
| PG0087.305NL | 3000 | 2700 | 0.038 | 30660 | 31530 | 0.038 | 0.12 | 37000 | 1.6 |
| PG0087.505NL | 5000 | 4500 | 0.025 | 57560 | 64200 | 0.025 | 0.09 | 48000 | 1.1 |

NOTES FROM TABLE: (See page 43)

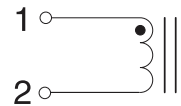
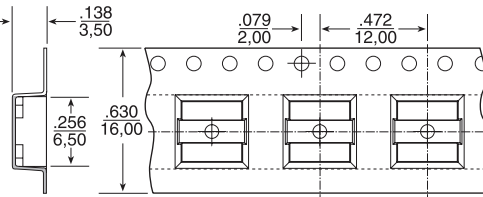
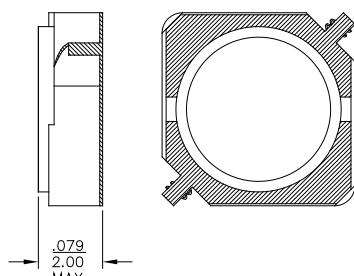
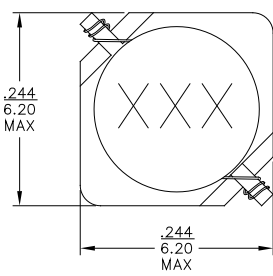
SMT Power Inductors

Shielded Drum Core - PG0087NL Series

Mechanical

Schematic

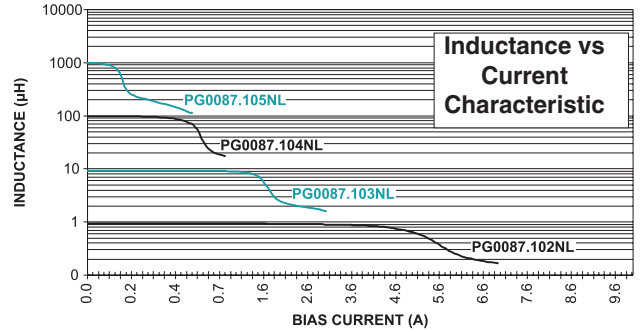
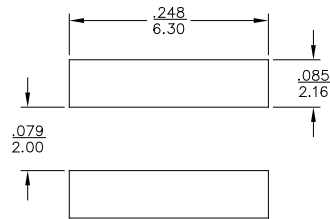
PG0087.XXX



Weight0.3grams
Tape & Reel1500/reel

Dimensions: $\frac{\text{Inches}}{\text{mm}}$

Unless otherwise specified,
 all tolerances are $\pm \frac{.004}{0,10}$



X-ON Electronics

Largest Supplier of Electrical and Electronic Components

Click to view similar products for [Fixed Inductors](#) category:

Click to view products by [Pulse manufacturer](#):

Other Similar products are found below :

[MLZ1608M6R8WTD25](#) [MLZ1608N6R8LT000](#) [MLZ1608N3R3LTD25](#) [MLZ1608N3R3LT000](#) [MLZ1608N150LT000](#)

[MLZ1608M150WTD25](#) [MLZ1608M3R3WTD25](#) [MLZ1608M3R3WT000](#) [MLZ1608M150WT000](#) [MLZ1608A1R5WT000](#)

[MLZ1608N1R5LT000](#) [B82432C1333K000](#) [PCMB053T-1R0MS](#) [PCMB053T-1R5MS](#) [PCMB104T-1R5MS](#) [CR32NP-100KC](#) [CR32NP-](#)

[151KC](#) [CR32NP-180KC](#) [CR32NP-181KC](#) [CR32NP-1R5MC](#) [CR32NP-390KC](#) [CR32NP-3R9MC](#) [CR32NP-680KC](#) [CR32NP-820KC](#)

[CR32NP-8R2MC](#) [CR43NP-390KC](#) [CR43NP-560KC](#) [CR43NP-680KC](#) [CR54NP-181KC](#) [CR54NP-470LC](#) [CR54NP-820KC](#) [CR54NP-8R5MC](#)

[MGDQ4-00004-P](#) [MGDU1-00016-P](#) [MHL1ECTTP18NJ](#) [MHL1JCTTD12NJ](#) [PE-51506NL](#) [PE-53601NL](#) [PE-53630NL](#) [PE-53824SNLT](#) [PE-](#)

[62892NL](#) [PE-92100NL](#) [PG0434.801NLT](#) [PG0936.113NLT](#) [PM06-2N7](#) [PM06-39NJ](#) [HC2LP-R47-R](#) [HC2-R47-R](#) [HC3-2R2-R](#) [HC8-1R2-R](#)