

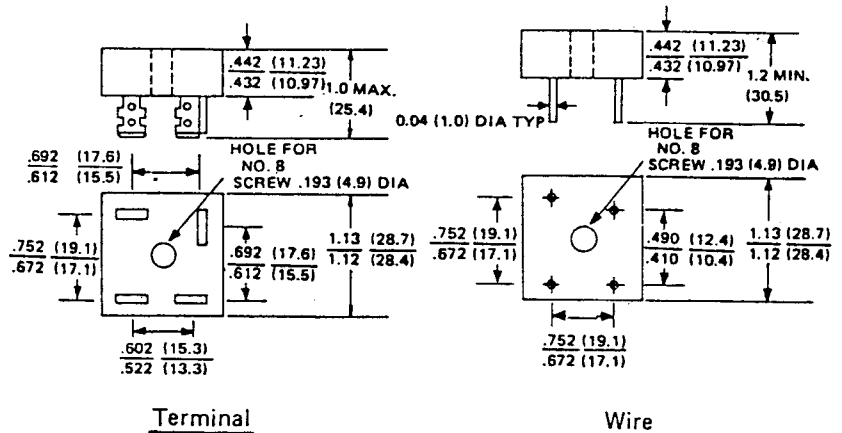
VOLTAGE RANGE
 50 to 1000 Volts
CURRENT
 25 Amperes

FEATURES

- Rating to 1000V PRV
- 300 amperes surge capability
- High efficiency
- Electrically isolated metal case for maximum heat dissipation
- Weight: 1.1 ounce 31.6 grams (Terminal)
 0.95 ounce 28.5 grams (Wire)
- Mounting: thru hole for # 8 screw

KBPC

KBPC-W



All dimensions in inches and (millimeters)

MAXIMUM RATINGS AND ELECTRICAL CHARACTERISTICS

Ratings at 25° C ambient temperature unless otherwise specified.
 Single phase, half wave, 60Hz, resistive or inductive load,
 For capacitive load, derate current by 20%.

		KBPC	KBPC	KBPC	KBPC	KBPC	KBPC	KBPC	UNIT
		25005	2501	2502	2504	2506	2508	2510	
Maximum Recurrent Peak Reverse Voltage	V_{RRM}	50	100	200	400	600	800	1000	V
Maximum RMS Input Voltage	V_{RMS}	35	70	140	280	420	560	700	V
Maximum DC Blocking Voltage	V_{DC}	50	100	200	400	600	800	1000	V
Maximum Average Forward Output Current @ $T_c = 55^\circ C$	$I_{(AV)}$	25							A
Peak Forward Surge Current, 8.3 ms Single Half Sine-wave superimposed on Rated Load (JEDEC Method)	I_{FSM}	300							A
Maximum Forward Voltage per Bridge Element at 12.5A, DC	V_F	1.2							V
Maximum DC Reverse Current at Rated DC Blocking Voltage per Bridge Element @ $T_A = 25^\circ C$ @ $T_A = 100^\circ C$	I_R	10 1							μA mA
$I^2 t$ Rating for fusing ($t < 8.3ms$)	$I^2 t$	373							$A^2 S$
Typical Thermal Resistance (Note. 2)	$R_{\theta JA}$	2.5							$^\circ C/W$
Operating Temperature Range	T_J	-55 to + 125							$^\circ C$
Storage Temperature Range	T_{STG}	-55 to + 150							$^\circ C$

NOTE:

2. Mounted on a 11.8 in² X 0.06 in thick (300mm² X 1.5mm thick) Copper plate.

X-ON Electronics

Largest Supplier of Electrical and Electronic Components

Click to view similar products for [solid state manufacturer](#):

Other Similar products are found below :

[151RA120](#) [MJ2955](#) [1N2976RB](#) [2N6165](#) [1N3313B](#) [P0900EA](#) [1N4056R](#) [1N2970B](#) [1N5302](#) [1N3327B](#) [2N2920](#) [2N2920A](#) [1N3350RB](#)
[1N4722](#) [2N6433](#) [1N2978B](#) [1N4056](#) [1N3346B](#) [1N1184RA](#) [RCA423](#) [1N3015B](#) [2N3810](#) [1N1183A](#) [1N3000B](#) [50RIA80](#) [2N4858A](#) [1N1202A](#)
[1N2997B](#) [2N4857A](#) [1N2982RB](#) [50RIA40](#) [2N4856A](#) [MJ10000](#) [1N1185A](#) [1N3317B](#) [1N2971B](#) [2N4990](#) [PMD16K80](#) [1N2989B](#) [70HFR40](#)
[1N1199A](#) [PMD17K100](#) [KBPC3510W](#) [1N3315B](#) [1N3309B](#) [KBPC5010](#) [3N201](#) [1N3913](#) [PMD16K100](#) [MCR1906-6](#)