



PHASE ANGLE ELECTRONIC HEAT SWITCH UP TO 15A

QLC

X10206

INTRODUCTION

The switchable phase angle power regulator is a robust and compact unit, ideal for controlling single phase mains driven loads. The standard QLC units are for 230V supply, with an integral three position and off control switch. The large triac enables the unit to handle high inrush currents with ample safety margin on industrial installations. An adhesive backed silver label and hairline knob are available as optional extras.

APPLICATIONS

Suitable for quartz lamps, conventional resistive heating elements in series or parallel configurations. Applications including ovens, moulders, dryers and some inductive loads, such as, transformers and motors.

FEATURES

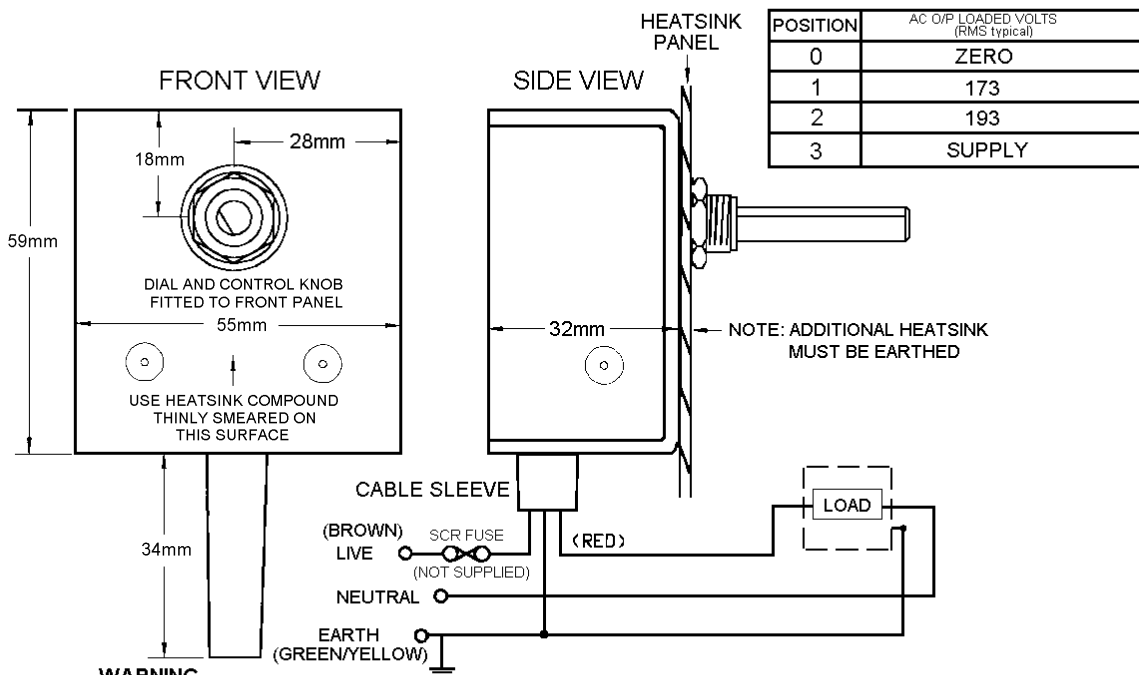
- Large triac for inrush protection.
- Three position & off control.
- Single hole fixing.
- Rugged and compact.
- Optional knob & dial.



RoHS Compliant
2002/95/EC
Directive

INSTALLATION

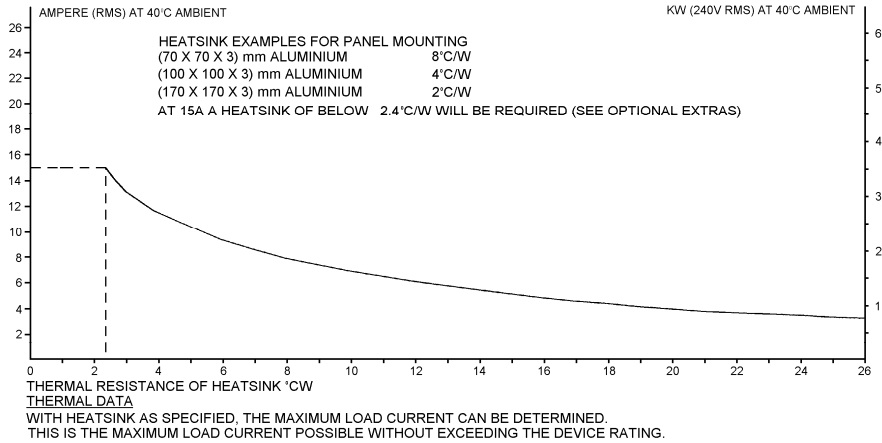
CONNECTIONS AND DIMENSIONS



WARNING

LIVE TERMINALS - SWITCH OFF SUPPLY BEFORE COMMENCING ANY SERVICE WORK.
FOR HEATSINK PANEL MOUNTING
A 10mm HOLE IS REQUIRED TO ACCEPT MOUNTING BUSH.
USE HEATSINK COMPOUND FOR EFFECTIVE THERMAL COUPLING.

INSTALLATION



SPECIFICATIONS

Triac limiting RMS. On state current	26A	Isolation voltage	2500V rms.
Unit limiting RMS. On state current	15A	I ² t limiting value for fusing	112A ² s
Peak single cycle surge @ 10mS	320A	Mains supply (within 10%)	230V ac @ 50/60 Hz
Max load at 20°C ambient (without extra heatsink)	10A Min	operating current	200mA
Max unit operating temperature	65°C	Unit storage temperature range	-20 to +85°C

FURTHER DIMENSIONS

Shaft diameter	6.3mm	Shaft projection from bush	30mm
Bush length	5mm	Standard cable length	400mm

FUSING

It is recommended to use semiconductor (fast acting) type fuses or circuit breakers (Semiconductor-MCB) for protection. On initial 'switch on' some loads may need an increased Factor of Safety (F of S) for Unit and/or Device protection. See SRA Data sheet for further information.

CE MARKING

This family carries a "CE" marking. These phase angle controllers need a suitable remote filter. For more information see recommendations section and contact our sales desk. (See Declaration of Conformity)

RECOMMENDATIONS

Other documents available on request, which may be appropriate for your application: -

CODE	IDENTITY	DESCRIPTION
X10229	RFI	Single Phase Filtering recommendations - addressing EMC Directive
X10213	ITA	Interaction, uses for phase angle and for burst fire control.
X10255	SRA	Safety requirements - addressing the Low Voltage Directive (LVD) including: - Thermal data/cooling; "Live" parts warning & Earth requirements; Fusing recommendations.
AP02/4	COS	UAL Conditions of sale.

NOTE It is recommended that installation and maintenance of this equipment should be done with reference to the current edition of the I.E.E. wiring regulations (BS7671) by suitably qualified/trained personnel. The regulations contain important requirements regarding safety of electrical equipment (For International Standards refer to I.E.C/ directive IEC 950).

ORDER CODE:

State part number: QLC 230V AC
 Optional extras include: Knob, Dial, Heatsink paste, Filter.
 Note: When ordering a filter the maximum current the QLC is to be used at will be required



UNITED AUTOMATION LIMITED

1 Southport Business Park
 Kew
 Southport, PR8 4HQ
 ENGLAND

Tel: 0044 (0) 1704 – 516500 Main
 Tel: 0044 (0) 1704 – 516516 Sales
 Fax: 0044 (0) 1704 – 516501
 Enquiry@united-automation.com
 www.united-automation.com
 Date 25/10/99



X-ON Electronics

Largest Supplier of Electrical and Electronic Components

Click to view similar products for [united automation manufacturer](#):

Other Similar products are found below :

[F175-25A](#) [QVR-230](#) [QVR-TB-RFI](#) [CSR604A](#) [PAC2](#) [CSR1004A](#) [AFM-11](#) [SSC-25](#) [DCM-24-40](#) [CSR1504A](#) [QVR/S-RFI 17](#) [PSR-25](#)