



**Kraftform Kompakt 60 ballhead**

# New in Autumn 2012

**950 SPKL/9 Multicolour**



**Mini-Check TORX® HF  
with holding function**



**Kraftform Micro/12**

# Kraftform Micro

## Now in rugged pouch for the belt.



**Kraftform Micro is the ideal screwdriving partner for electronics or precision engineering applications.**

The highly precise Wera manufacturing quality is indispensable whenever minimum dimensions are concerned. The three-zone concept reduces fastening time and distinctly lowers the cost for each screw connection.

**Kraftform Micro-Set/12 SB 1 Screwdriver set for electronic applications**



**Application:** Slotted and Phillips screws, TORX® socket screws, and Hexagon socket screws  
**Content:** 12-piece set, in a belt pouch

Code			
05073675001	<ul style="list-style-type: none"> <li>2035 Micro 1 x 0.23x1.5x40; 1 x 0.30x1.8x60; 1 x 0.40x2.0x60; 1 x 0.40x2.5x80; 1 x 0.50x3.0x80</li> <li>2050 PH Micro 1 x PH 00x60; 1 x PH 0x60</li> <li>2054 Micro 1 x 0.9x40; 1 x 1.5x60; 1 x 2.0x60</li> <li>2067 TORX® HF 1 x TX 5x40; 1 x TX 6x40</li> </ul>		1



# Kraftform Micro

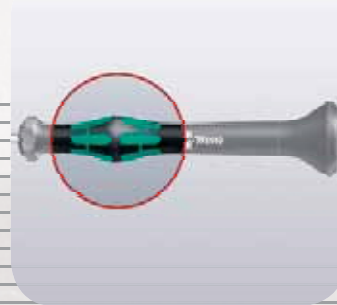
Now in rugged pouch for the belt.



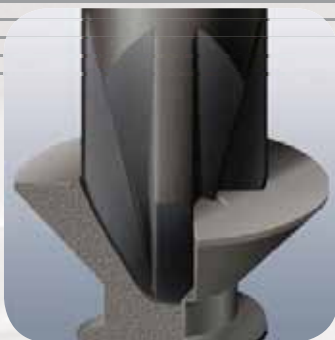
The fixed head and the fast-turning zone just below the head allow **rapid twisting**. This makes time-consuming grip adjustments, as required with other conventional precision screwdrivers, unnecessary.



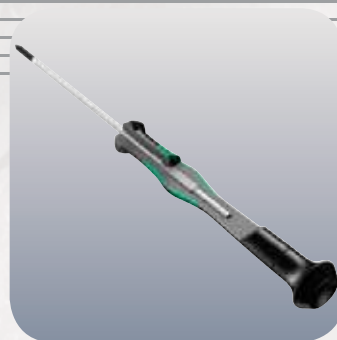
The power zone has integrated soft zones near the blade tip to ensure **high torque transfer for loosening or tightening screws** without losing contact with the screw.



The precision zone directly above the blade gives the user a better feel **for the right rotation angle during fine adjustment work**.



The Wera Black Point tip, as well as a refined hardening process, ensure **long service life** and **enhanced corrosion protection**.



Multi-component screwdriver handle for **ergonomic working**.



Indispensable for many users, including electronics technicians, opticians, precision engineers, jewellers, EDP hardware fitters and model-makers.

# L-key Set Multicolour

With convenient colour-coded tubing.

**NEW**



## L-keys in SPKL quality Multicolour

9-piece set

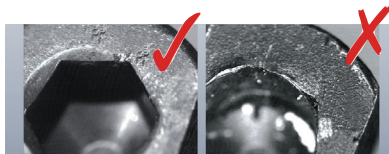
Highest quality: Round material with profiled Hex-Plus design, also with the ballpoint version. The Hex-Plus profile extends the service life of hexagon socket screws. BlackLaser surface treatment for high corrosion protection.

The rubber sleeve provides a pleasant grip, particularly in applications at low temperatures. The colour-coded tubing makes it easy to find the right tool.



## Hex-Plus

Hexagon screws can endure a problem because the contact surfaces delivering the power from the conventional tool, is transferred to the screw via very small surface areas. The consequence: the screw can become damaged (rounding out). Hex-Plus tools have a greater contact surface that prevents this from happening! Good to know: Hex-Plus tools fit into every standard hexagon socket screw!



Hex-Plus

## 950 SPKL/9 SM N Multicolour L-key set, metric, BlackLaser

Hex-Plus



9-piece set in a two-component clip

		Code	
05073593001	950 SPKL Multicolour	1 x 1.5x90; 1 x 2.0x101; 1 x 2.5x112; 1 x 3.0x123; 1 x 4.0x137; 1 x 5.0x154; 1 x 6.0x172; 1 x 8.0x195; 1 x 10.0x224	5

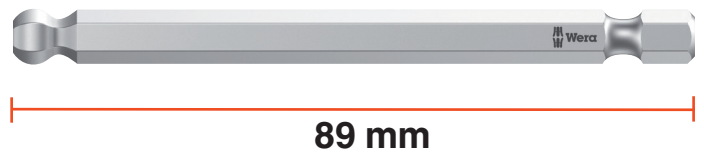
# Kraftform Kompakt 60 KK

## Now with bits with ballpoint profile.

**NEW**



- 17 pieces
- Ideal for confined spaces
- Ballpoint for hexagon socket screws and TORX®
- Suitable for manual and power tool applications
- Rapidaptor for rapid bit change
- Practical belt pouch included



### Kraftform Kompakt

Many professionals work with their tools at both a fixed location, such as a workshop, and at external sites away from their base. Frequently it is only out on site that a decision is made as to whether use a manual or power tool for a particular job.

The unique Kraftform Kompakt tool kits equip the user for both types of operation with just a single set, and as the kits come in rugged pouches with belt loops, they are easily carried wherever needed.



### Kraftform Kompakt 60 KK

Hex-Plus



Pouch with 89 mm bits  
17-piece set  
1 Kraftform bitholding screwdriver 816 R with Rapidaptor quick-release chuck

Code			
05059294001	816 R	1 x 1/4"x119	1
	842/4	1 x 3.0x89; 1 x 4.0x89; 1 x 5.0x89; 1 x 6.0x89	
	851/4 Z PH	1 x PH 1x89; 1 x PH 2x89; 1 x PH 3x89	
	855/4 Z PZ	1 x PZ 1x89; 1 x PZ 2x89; 1 x PZ 3x89	
	867/4 KK	1 x TX 10x89; 1 x TX 15x89; 1 x TX 20x89; 1 x TX 25x89; 1 x TX 30x89; 1 x TX 40x89	

## X-ON Electronics

Largest Supplier of Electrical and Electronic Components

*Click to view similar products for [Other Tools](#) category:*

*Click to view products by [Wera](#) manufacturer:*

Other Similar products are found below :

[CR-05FL7--150R](#) [CR-05FL7--698K](#) [899-2-KT46](#) [899-5-KT46](#) [CR-0AFL4--332K](#) [CR-12FP4--260R](#) [CRCW04021100FRT7](#)  
[CRCW04021961FRT7](#) [5800-0090](#) [CRCW04024021FRT7](#) [CRCW040254R9FRT7](#) [CRCW0603102JRT5](#) [59065-5](#) [00-8273-RDPP](#) [00-8729-](#)  
[WHPP](#) [593033](#) [593058](#) [593072](#) [593564100](#) [593575](#) [593591](#) [593593](#) [011349-000](#) [CRCW08052740FRT1](#) [LUC-012S070DSM](#) [LUC-](#)  
[018S070DSP](#) [599-2021-3-NME](#) [599-JJ-2021-03](#) [00-5080-YWPP](#) [5E4750/01-20R0-T/R](#) [LW1A-L1-GL](#) [LW1A-P1-GD](#) [LW1L-A1C10V-GL](#)  
[LW1L-M1C70-A](#) [0202-0173](#) [00-9089-RDPP](#) [00-9300-RDPP](#) [CRCW2010331JR02](#) [01-1003W-8/32-10](#) [601-GP-08-KT39](#) [601-JJ-06](#) [601-SPB](#)  
[601YSY](#) [602-JJ-03](#) [602SPB](#) [602Z](#) [603-JJ-07-FP](#) [603-JJY-04](#) [604J](#) [604-JJ-05](#)