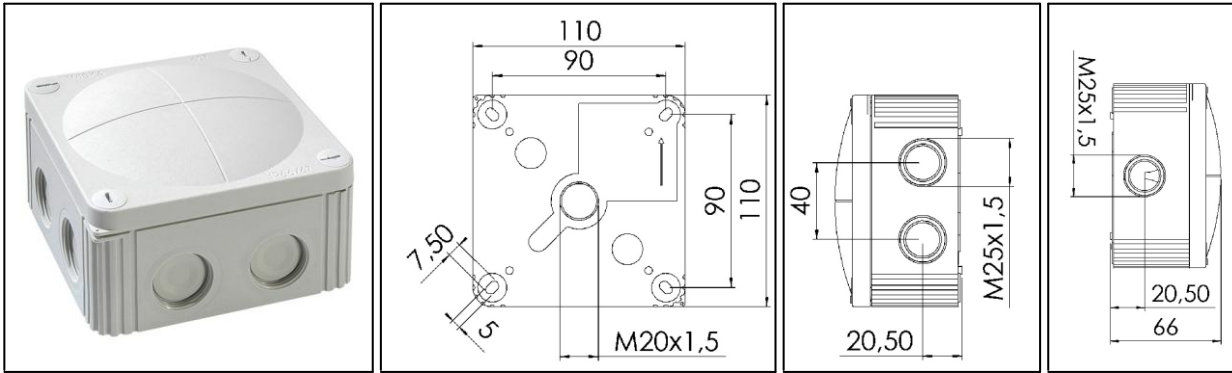




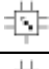

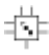


WISKA COMBI 607



- Protection class to EN 60 529:** IP 66 / 67
Flame protection: Glow wire test 750° C acc. to EN 60695-2-11
Temperatures during installation: -5°C to 60°C
Temperature range of material: -30°C to 100°C, intermittent up to approx. 120°C
Voltage: 690 V
Material: Polypropylene, reinforced glass fibre; sealing: thermoplastic elastomere
Terminals/poles: 6 mm²
Fixing: 4 internal openings outside of the sealing area
Equipment: Elastic self-sealing membranes for cable entry without mechanical devices: 7 inlets at the side and 3 inlets in the base
 - 7 integrated M 25 threads, no locknuts necessary
 - 4 captive quick-release lid screws
 - Colour RAL 7035 light grey
 - .../S = black
 - .../W = white
- Accessories:**
 - DIN RAIL KIT 607: Rail TS 35 + Fixing material, WISKA-No. 10060361
 - EC 607 Earthing plate: WISKA No. 10101474

Type	WISKA-No.		 mm		L x B x H external / open mm
COMBI 607/5	10060532	3/27	3 - 17		110 x 110 x 66
COMBI 607/5/S	10060538	3/27	3 - 17		110 x 110 x 66
COMBI 607/5/W	10060534	3/27	3 - 17		110 x 110 x 66
DIN RAIL KIT 607	10060361	1			-

X-ON Electronics

Largest Supplier of Electrical and Electronic Components

Click to view similar products for [wiska manufacturer](#):

Other Similar products are found below :

[10066414](#) [10065002](#) [EMUG 32 GRY](#) [RE0400](#) [COMBI 1010/5/S](#) [COMBI 108/5](#) [ESMU 20](#) [COMBI 308/5/S](#) [COMBI 308/5](#) [10066124](#)
[ESVG25 BLK](#) [EMMU 20](#) [10066120](#) [EMUG 25 BLK](#)