

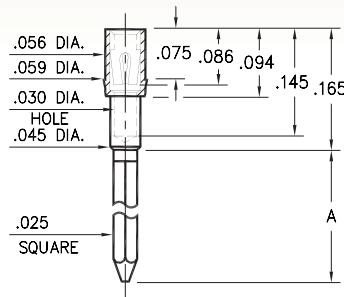
WRAPOST RECEPTACLES

FOR .015" - .025" DIAMETER PINS

1702/1703

170X-X-15-XX-30-XX-02-0

Press-fit in .057 mounting hole

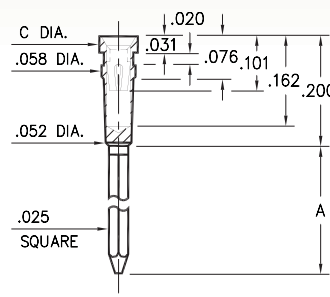


Basic Part Number	# of Wraps	Length A
1702-2	2	.370
1703-3	3	.510

0038 ⇨ 0040/0066 ⇨ 0068

00XX-X-17-XX-30-XX-02-0

Press-fit in .057 mounting hole

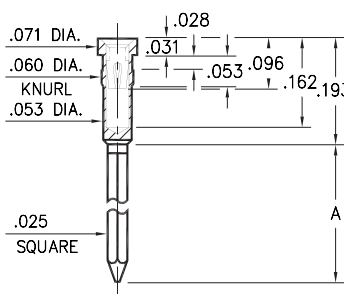


Basic Part #	# of Wraps	Length A	Dia. C
0040-1	1	.260	.072
0039-2	2	.360	
0038-3	3	.500	
0068-1	1	.260	.062
0067-2	2	.360	
0066-3	3	.500	

0086/0088/0089

008X-X-17-XX-3X-XX-02-0

Press-fit in .057 mounting hole

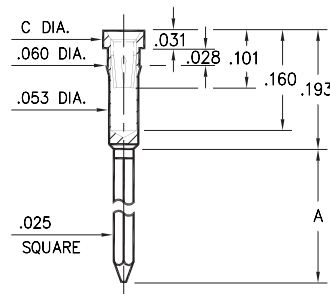


Basic Part Number	# of Wraps	Length A
0089-2	2	.370
0088-3	3	.510
0086-4	4	.630

1030 ⇨ 1036

103X-X-17-XX-3X-XX-02-0

Press-fit in .057 mounting hole

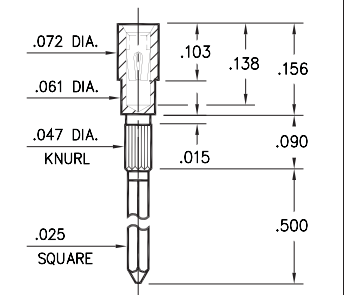


Basic Part #	# of Wraps	Length A	Dia. C
1032-1	1	.260	.072
1031-2	2	.360	
1030-3	3	.510	
1036-1	1	.260	.062
1035-2	2	.360	
1034-3	3	.510	

1045

1045-3-17-XX-30-XX-02-0

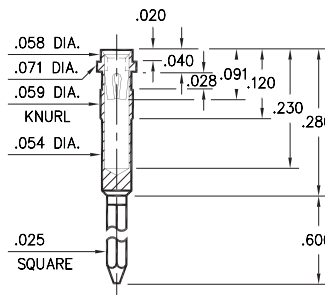
Press-fit in .043 mounting hole



1040

1040-3-17-XX-30-XX-02-0

Press-fit in .056 mounting hole



SPECIFICATIONS:

Shell Material: Brass Alloy 360, 1/2 Hard

Contact Material: Beryllium Copper Alloy 172, HT

Dimensions: Inches

Tolerances On: Lengths: ±.005

Diameters: ±.002

Angles: ±2°



ORDER CODE: XXXX - X - 17 - XX - XX - XX - 02 - 0

BASIC PART #

SPECIFY SHELL FINISH:

- 01 200 μ" TIN/LEAD OVER NICKEL
- ◆ 80 200 μ" TIN OVER NICKEL (RoHS)
- ◆ 15 10 μ" GOLD OVER NICKEL (RoHS)

SPECIFY CONTACT FINISH:

- 02 100 μ" TIN/LEAD OVER NICKEL
- ◆ 84 100 μ" TIN OVER NICKEL (RoHS)
- ◆ 27 30 μ" GOLD OVER NICKEL (RoHS)

SELECT CONTACT:

#30 or #32 CONTACT (DATA ON PAGE 253)

(For alternate contact choices, see groups B and C on page 248)



X-ON Electronics

Largest Supplier of Electrical and Electronic Components

Click to view similar products for [IC & Component Sockets](#) category:

Click to view products by [Mill-Max](#) manufacturer:

Other Similar products are found below :

[714-43-102-31-012000](#) [0066-3-17-15-30-14-02-0](#) [0134-0-15-15-32-27-04-0](#) [614-DG5](#) [6527-0-00-15-00-00-03-0](#) [670](#) [672](#) [673](#) [712-93-120-41-001000](#) [714-93-104-31-018000](#) [8059-4G1-LF](#) [807-22-001-10-001101](#) [807-22-001-10-003101](#) [807-22-001-10-004101](#) [807-22-001-10-006101](#) [807-22-001-30-011101](#) [807-22-001-30-012101](#) [807-22-001-30-013101](#) [807-22-001-30-014101](#) [8-1437531-4](#) [8150-6P10](#) [833-93-034-10-001000](#) [835-43-014-10-001000](#) [851-41-006-10-001000](#) [851-43-008-20-001000](#) [851-43-014-20-001000](#) [851-93-006-20-001000](#) [851-93-010-20-001000](#) [852-10-026-10-001000](#) [853-43-020-10-001000](#) [86.010.0053.0](#) [116-43-306-41-003000](#) [116-43-308-41-007000](#) [116-87-308-41-007101](#) [PX-68LCC](#) [PX-84LCC](#) [121-13-318-41-001000](#) [121-13-320-41-001000](#) [121-13-308-41-001000](#) [123-43-314-41-801000](#) [123-43-420-41-001000](#) [123-43-636-41-001000](#) [123-87-320-41-001101](#) [122-13-316-41-001000](#) [123-13-624-41-001000](#) [123-43-306-41-001000](#) [123-43-322-41-801000](#) [123-43-428-41-001000](#) [123-43-624-41-001000](#) [12-3513-11](#)