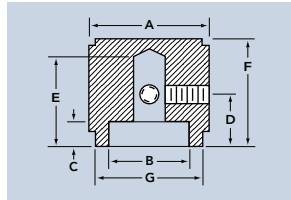


MACHINED ALUMINUM KNOBS



PV SERIES

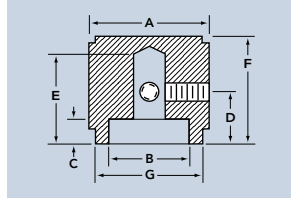


Part Number								2 Set Screws
Style	A Diam.	B Diam.	C Height	D Height	E Height	F Height	G Diam.	
PV-12	.500	.375	.160	.295	.510	.622	.450	6-32
PV-19	.750	.590	.160	.295	.510	.622	.695	6-32
PV-25	.937	.708	.160	.295	.510	.622	.885	6-32
PV-32	1.250	.975	.160	.295	.510	.622	1.195	6-32

PV Series knobs come in a Natural or Black Anodized finish.



PB SERIES

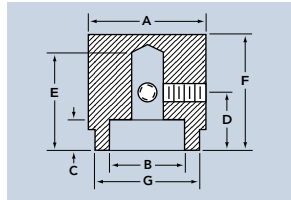


Part Number								2 Set Screws
Style	A Diam.	B Diam.	C Height	D Height	E Height	F Height	G Diam.	
PB-12	.500	.375	.120	.330	.640	.790	.450	6-32
PB-19	.750	.590	.120	.330	.640	.790	.710	6-32
PB-25	.937	.708	.120	.330	.640	.790	.885	6-32
PB-32	1.250	.975	.120	.330	.640	.790	1.195	6-32

PB Series knobs come in a Natural or Black Anodized finish.



PVL SERIES

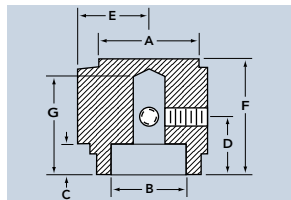


Part Number								2 Set Screws
Style	A Diam.	B Diam.	C Height	D Height	E Height	F Height	G Diam.	
PVL-12	.500	.375	.177	.295	.510	.622	.445	6-32
PVL-19	.750	.590	.177	.295	.510	.622	.655	6-32
PVL-25	.937	.708	.177	.295	.510	.622	.885	6-32
PVL-32	1.250	.975	.177	.295	.510	.622	1.195	6-32

PVL Series knobs come in a Natural or Black Anodized finish.



PKP SERIES

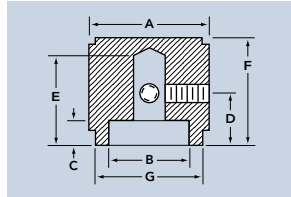


Part Number								2 Set Screws
Style	A Diam.	B Diam.	C Height	D Height	E Radius	F Height	G Height	
PKP-12	.500	.375	.120	.320	.375	.630	.510	6-32
PKP-19	.750	.590	.120	.320	.510	.630	.510	6-32
PKP-25	.937	.708	.120	.320	.629	.630	.510	6-32

PKP Series knobs come in a Natural or Black Anodized finish.



PV TWO-TONE SERIES

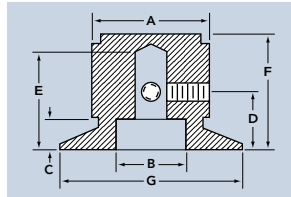


Part Number								2 Set Screws
Style	A Diam.	B Diam.	C Height	D Height	E Height	F Height	G Diam.	
PV-12 BA	.500	.375	.160	.295	.510	.622	.450	6-32
PV-19 BA	.750	.590	.160	.295	.510	.622	.695	6-32
PV-25 BA	.937	.708	.160	.295	.510	.622	.885	6-32
PV-32 BA	1.250	.985	.160	.295	.510	.622	1.195	6-32

PV Two-Tone Series knobs come in a Natural and Black Anodized finish.



PVS TWO-TONE SERIES

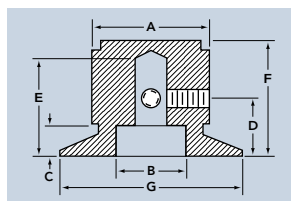


Part Number								2 Set Screws
Style	A Diam.	B Diam.	C Height	D Height	E Height	F Height	G Diam.	
PVS-12 BA	.500	.375	.177	.295	.510	.622	.750	6-32
PVS-19 BA	.750	.590	.177	.295	.510	.622	1.120	6-32
PVS-25 BA	.937	.708	.177	.295	.510	.622	1.640	6-32

PVS Two-Tone Series knobs come in a Natural and Black Anodized finish.



PVS SERIES



Part Number								2 Set Screws
Style	A Diam.	B Diam.	C Height	D Height	E Height	F Height	G Diam.	
PVS-12	.500	.375	.177	.295	.510	.622	.750	6-32
PVS-19	.750	.590	.177	.295	.510	.622	1.120	6-32
PVS-25	.937	.708	.177	.295	.510	.622	1.640	6-32

PVS Series knobs come in a Natural or Black Anodized finish.

EXAMPLE: PB-12A-1

Series	Diameter	Finish	Shaft Hole
PB	12	A	1

ORDERING GUIDE FOR MACHINED ALUMINUM SERIES

Series	Diameter	Finish/Color	Shaft Hole
PB	12- 1/2"	A- Clear Anodize	1- 1/8" Round
PV	19- 3/4"	B- Black Anodize	2- 1/4" Round
PKP	25- 1/4"	BA-2-tone	
PVL	32- 1/4"		
PVS			

All of the above knobs are available for .125" and .250" shaft sizes.



X-ON Electronics

Largest Supplier of Electrical and Electronic Components

Click to view similar products for [ehc manufacturer](#):

Other Similar products are found below :

[PVS-25B-2](#) [3488-2B](#) [DS125-6-2G](#) [MS91528-0E1B](#) [EH71-1P2S](#) [PV-32B-2](#) [EH71-4C2S](#) [MS91528-3F2B](#) [409P2B](#) [3489-1-B](#) [MS91528-1K2S](#)
[PB-12B-1](#) [EH71-3F2S](#) [EH71-0K1S](#) [407R2B](#) [MS91528-3R2B](#) [409D2B](#) [EH71-4E2S](#) [EH71-1DSB2S](#) [409PD2B](#) [EH71-0C1S](#) [MS91528-](#)
[OD1B](#) [MS91528-1K1B](#) [EH710NP1S](#) [EH71-1D2S](#) [MS91528-4S2B](#) [EH71-3C2S](#) [MS91528-1B2B](#) [3442-2-B](#) [3441-2-B](#) [3440-1-B](#) [MS91528-](#)
[4F2B](#) [EH71-2C2S](#) [407D2B](#) [3008-1-B](#) [MS91528-0F1B](#) [MS91528-1D1B](#) [MS91528-2F2B](#) [PC1F2B](#) [MS91528-1D2B](#) [MS91528-1II2B](#)
[MS91528-1F2S](#) [3008-2-B](#) [MS91528-1P2S](#) [3010-2-B](#) [EH712F2S](#) [EH71-2P2S](#) [MS91528-2P2B](#) [MS91528-2D2B](#) [EH71-1GG2S](#)