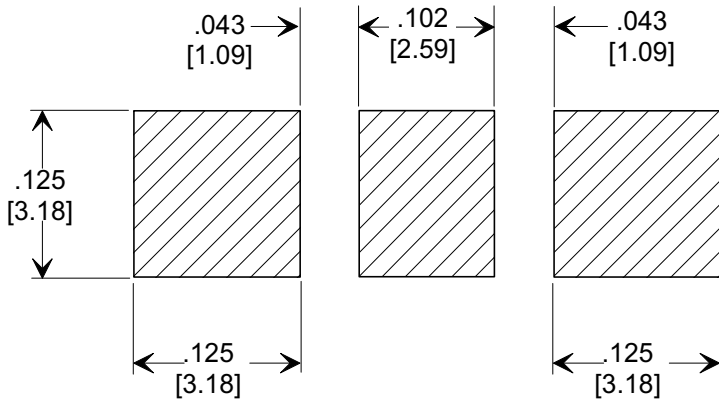
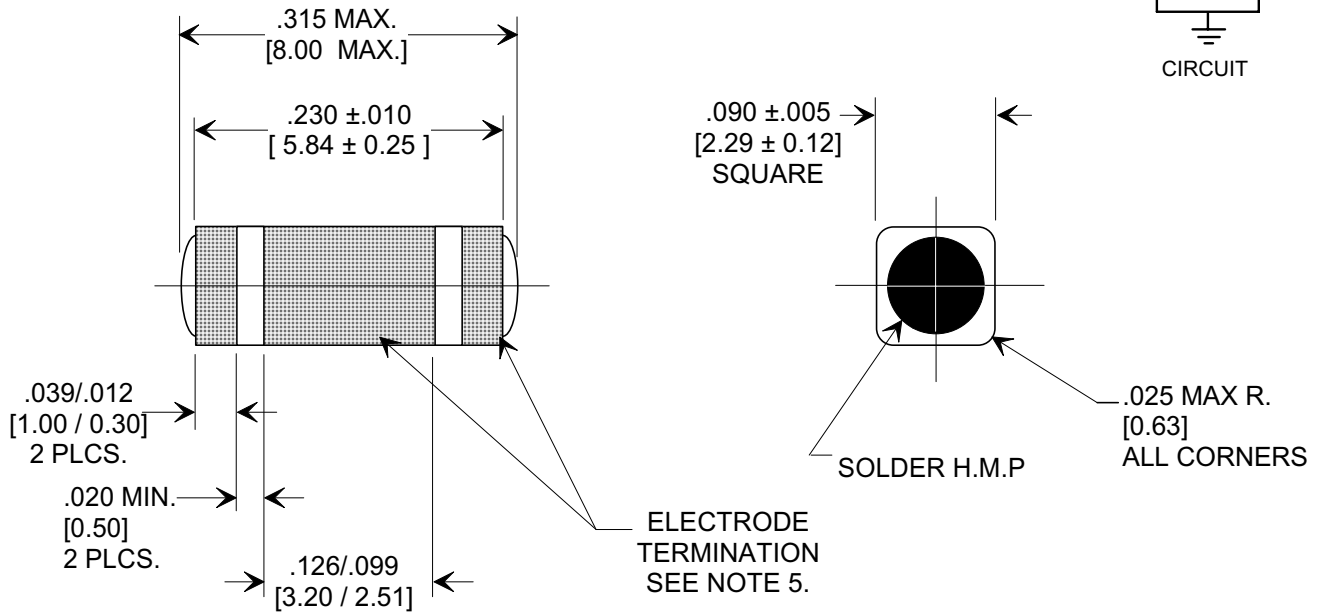
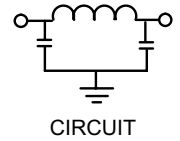
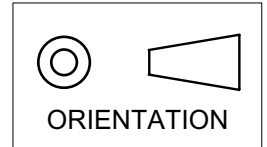


MARKETING SALES DRAWING

DIMENSIONS IN INCHES - DO NOT SCALE THIS DRAWING
 DIMENSIONS IN METRIC []

Electrical Testing
 per Tusonix standard
 test plans and Mil-Std-202
 Test Methods.



SUGGESTED MOUNTING PATTERN

1. INDUCTANCE TO BE 0.1 μ H MINIMUM.
2. PACKAGE: BULK OR BLISTER TAPE TO IEC-60286-3 TYPE II AND EIA-481-A.
3. TUSONIX STANDARD PART NUMBER: 4700-005. TUSONIX RoHS COMPLIANT PART NUMBER: 4700-005 LF. CUSTOMER MUST SPECIFY STANDARD OR RoHS PART NUMBER WHEN ORDERING.
4. PART MARKING: STANDARD PART: NO MARKING. RoHS PART: LABELED ON PACKAGING ONLY.
5. ELECTRODE TERMINATION: STANDARD 60/40 SOLDER; RoHS COMPLIANT - MATTE TIN.

CAP.	TOLERANCE	WVDC		TEST VOLTAGE	I.R.MIN. @ 100 (VDC.)	IDC	TYPICAL NO LOAD INSERTION LOSS dB AT 25°C PER MIL-STD-220		
		85°C	+125°C				10 MHZ	100 MHZ	1 GHZ
1000 pF	GMV	100	100	300 VDC	10 G Ω	10 A	7	40	65

X-2015 Rev-0	REVISION RECORD
	Original Release
	0
	DELETED ITEMS 000, 001, 002 & 007. S.M. 01-16-97
	8
	970109-3
	DIM. .085 ±.005 WAS .083 ±.004. S.M. 07-1598
	9
	19980715-8-03
	ITEM 009 & ORIENTATION SYMBOL ADDED L.E. 06-18-01
	10
	20010618-5-01
	DIM .090 WAS .085. REVISED MOUNTING PAT. ADDED ITEMS FROM 4700-050. S.M. 09-19-01
	11
20010918-3-01	
REVISED DWG. DRAWING MADE FOR EACH VAR. S.M. 02-13-03	
12	
20030213-1-02	
REVISED DRAWING. S.M. 06-20-03	
13	
20030619-2-02	
REVISED NOTES. S.M. 06-20-03	
14	
20050916-1-02	

--TOLERANCES-- Unless Otherwise Specified DECIMAL ± .005 [0.13] ANGLES ±	Title SURFACE MOUNT SQUARE STYLE PI FILTER Drawn FG 9-9-94 Scale 7 X Approved NV 9-9-94
TUSONIX TUCSON, ARIZONA	A
4700-005	

X-ON Electronics

Largest Supplier of Electrical and Electronic Components

Click to view similar products for [cts manufacturer](#):

Other Similar products are found below :

[744C083333JP](#) [296UD504B1N](#) [262XR102B](#) [744C083102JP](#) [CB3LV-3C-32M7680](#) [744C083222JP](#) [743C083103JP](#) [770101223](#) [4400-506](#)
[026TB32R253B1A1](#) [766163511GP](#) [ATS040SM-1](#) [MXO45HST-3C-16M0000](#) [ATS061C](#) [ATS25ASM-1](#) [743C083104JP](#) [744C083472JP](#)
[77083103P](#) [218-10LPSTRF](#) [O7050147456MFDA4SC](#) [402WF20012IMR](#) [KFF6516A](#) [194-8MST](#) [742C083330JPTR](#) [750-101-R120](#)
[TFE322T32K7680R](#) [TX0506-1B](#) [766143221GP](#) [77061333P](#) [219-10LPSTR](#) [7609-501LF](#) [CTS-1621](#) [284TBCF502A26A1](#) [766163560GP](#)
[CB3-3I-20M0000](#) [4300-060LF](#) [4400-032](#) [ATS12ASM-1](#) [201XR104B](#) [770103101P](#) [CA25C5003HLT](#) [209-2MSF](#) [6740-2015](#) [CB3-3C-](#)
[1M5440](#) [206-6RAST](#) [T8031-5V](#) [ATS16ASM-1E](#) [767163104D](#) [PB1-36ND](#) [ATS049BSM-1E](#)