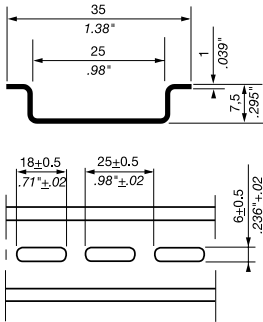


PR30 Mounting rail

Terminal block accessories

RoHS
RoHS

2000 mm 78 in Length



Features and Benefits

- Pre-punched symmetrical mounting rail;
- The oblong holes ease the mounting and allow to use existing and/or numerous fixings;
- Particularly well designed for fixing onto back-plates and for terminal assemblies of small dimensions

Ordering Details

Description	Color	Type	Catalog Number	Packing pieces	Weight 1 pc (g)
Prepunched rail		PR30	017322005	20	

Main Technical Data

Material	Zinc plating and passivation steel		
Rail			
	IEC	cULus - CSA	
Equivalent E-Cu cross section			

Mounting Instructions

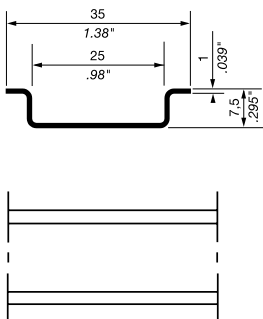
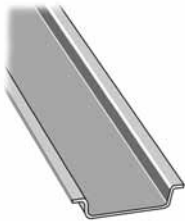
- In order to guarantee the performances and security of your installation, please ensure the rail and its fixings can withstand the static and dynamic loads of the components mounted on it;
- To prevent the rail from flexing (1 mm 0.039 in rail thickness only), fixing is recommended every 250 mm 9.842 in;
- To prevent any issues during mounting, screw heads used for rail fixing should not protrude from the rail (7,5 mm 0.295 in rail height only).

PR3.Z2 Mounting rail

Terminal block accessories

RoHS
RoHS

2000 mm 78 in Length



Features and Benefits

- Symmetrical mounting rail complying with IEC60715;
- Particularly well designed for fixing onto back-plates and for terminal assemblies of small dimensions

Ordering Details

Description	Color	Type	Catalog Number	Packing pieces	Weight 1 pc (g)
		PR3.Z2	017430017	20	

Main Technical Data

Material	Zinc plating and passivation steel		
Rail	TH 35-7.5		
	IEC	cULus - CSA	
Equivalent E-Cu cross section	16 mm ²	4 AWG	

Mounting Instructions

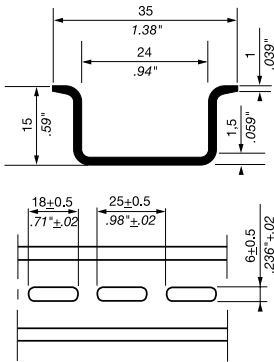
- In order to guarantee the performances and security of your installation, please ensure the rail and its fixings can withstand the static and dynamic loads of the components mounted on it;
- To prevent the rail from flexing (1 mm 0.039 in rail thickness only), fixing is recommended every 250 mm 9.842 in;
- To prevent any issues during mounting, screw heads used for rail fixing should not protrude from the rail (7,5 mm 0.295 in rail height only).

PR50 Mounting rail

Terminal block accessories

RoHS
RoHS

2000 mm 78 in Length



Features and Benefits

- Pre-punched symmetrical mounting rail;
- The oblong holes ease the mounting and allow to use existing and/or numerous fixings.

Ordering Details

Description	Color	Type	Catalog Number	Packing pieces	Weight 1 pc (g)
Prepunched rail		PR50	010159826	10	

Main Technical Data

Material	Zinc plating and passivation steel	
Rail		
	IEC	cULus - CSA
Equivalent E-Cu cross section		

Mounting Instructions

- In order to guarantee the performances and security of your installation, please ensure the rail and its fixings can withstand the static and dynamic loads of the components mounted on it;
- To prevent the rail from flexing, fixing is recommended every 500 mm 19.685 in;
- In order to increase the accessibility of your terminal assembly, we recommend the use of our rail offset brackets EM45 (Catalog Number 1SNA 008 521 R2600) for a 45° orientation of the rail.

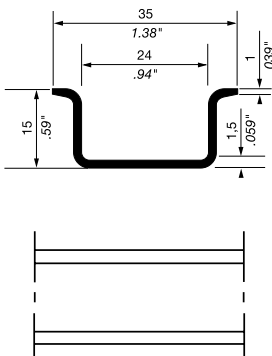
10

PR5 Mounting rail

Terminal block accessories

RoHS
RoHS

2000 mm 78 in Length



Features and Benefits

- Symmetrical mounting rail

Ordering Details

Description	Color	Type	Catalog Number	Packing pieces	Weight 1 pc (g)
		PR5	016870022	10	

Main Technical Data

Material	Zinc plating and passivation steel	
Rail		
	IEC	cULus - CSA
Equivalent E-Cu cross section		

Mounting Instructions

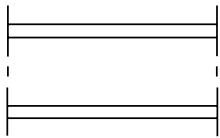
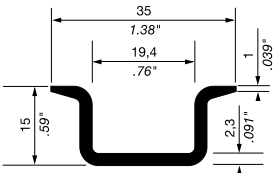
- In order to guarantee the performances and security of your installation, please ensure the rail and its fixings can withstand the static and dynamic loads of the components mounted on it;
- To prevent the rail from flexing, fixing is recommended every 500 mm 19.685 in;
- In order to increase the accessibility of your terminal assembly, we recommend the use of our rail offset brackets EM45 (Catalog Number 1SNA 008 521 R2600) for a 45° orientation of the rail.

PR4 Mounting rail

Terminal block accessories

RoHS
RoHS

2000 mm 78 in Length



Features and Benefits

- Symmetrical mounting rail complying with IEC60715;
- The rigidity of the rail is maximised by the 2.3 mm 0.090 in thickness of the rail, and by its solid, non slotted construction
- PR4 TH35-15 is the most rigid mounting rail solution and it can support any electrical devices.

Ordering Details

Description	Color	Type	Catalog Number	Packing pieces	Weight 1 pc (g)
Recommended for SNK ground terminal blocks up to 35 mm ² 2 AWG.		PR4	016850012	10	

Main Technical Data

Material	Zinc plating and passivation steel	
Rail	TH 35-15	
	IEC	cULus - CSA
Equivalent E-Cu cross section	50 mm ²	0 AWG

Mounting Instructions

- In order to guarantee the performances and security of your installation, please ensure the rail and its fixings can withstand the static and dynamic loads of the components mounted on it;
- To prevent the rail from flexing, fixing is recommended every 700 mm 27.559 in;
- In order to increase the accessibility of your terminal assembly, we recommend the use of our rail offset brackets EM45 (Catalog Number 1SNA 008 521 R2600) for a 45° orientation of the rail.

10

X-ON Electronics

Largest Supplier of Electrical and Electronic Components

Click to view similar products for [entrelec](#) manufacturer:

Other Similar products are found below :

[023000012](#) [023103024](#) [023000107](#) [1SNK505310R0000](#) [011762822](#) [016511417](#) [016340320](#) [1SNK516020R0000](#) [023300421](#)

[1SNK510010R0000](#) [018731214](#) [011870703](#) [010500220](#) [011511607](#) [023300227](#) [016049626](#) [017666704](#) [1SNK508411R0000](#) [023300320](#)

[023300001](#) [016548827](#) [012511813](#) [017301610](#) [011546820](#) [010500127](#)