

40 Series Shell Case with End Panel

A very versatile shell enclosure with removable end plate. Recessed area for membrane keypad optional. Battery options include: 1 9V cell or No battery

Battery Options:
No Battery
or
1 9V cell



Color Options:
PC Bone
Black
Custom color matching

Standard Material Options:
ABS UL 94 VO (fire retardant)
ABS UL 94 HB standard

Dimensions:
(L x W x H)
3.80 x 2.40 x 1.00
3.80 x 2.40 x 1.50 **New deep top version available**

	Flush Top - Black	Flush Top - Bone	Recessed Top - Black	Recessed Top - Bone
Dimensions	3.8 x 2.4 x 1.00"	3.8 x 2.4 x 1.00"	3.8 x 2.4 x 1.00"	3.8 x 2.4 x 1.00"
Description	Part No.	Part No.	Part No.	Part No.
Case with NO Battery Compartment	40-12-NO-F-BL	40-12-NO-F-BO	40-12-NO-R-BL	40-12-NO-R-BO
Case with 9V Battery Compartment	40-12-9V-F-BL	40-12-9V-F-BO	40-12-9V-R-BL	40-12-9V-R-BO

NEW Deep Top Version	Flush Top - Black	Flush Top - Bone	Recessed Top - Black	Recessed Top - Bone
Dimensions	3.8 x 2.4 x 1.50"	3.8 x 2.4 x 1.50"	3.8 x 2.4 x 1.50"	3.8 x 2.4 x 1.50"
Description	Part No.	Part No.	Part No.	Part No.
Case with NO Battery Compartment	40-32-NO-F-BL	40-32-NO-F-BO	40-32-NO-R-BL	40-32-NO-R-BO
Case with 9V Battery Compartment	40-32-9V-F-BL	40-32-9V-F-BO	40-32-9V-R-BL	40-32-9V-R-BO

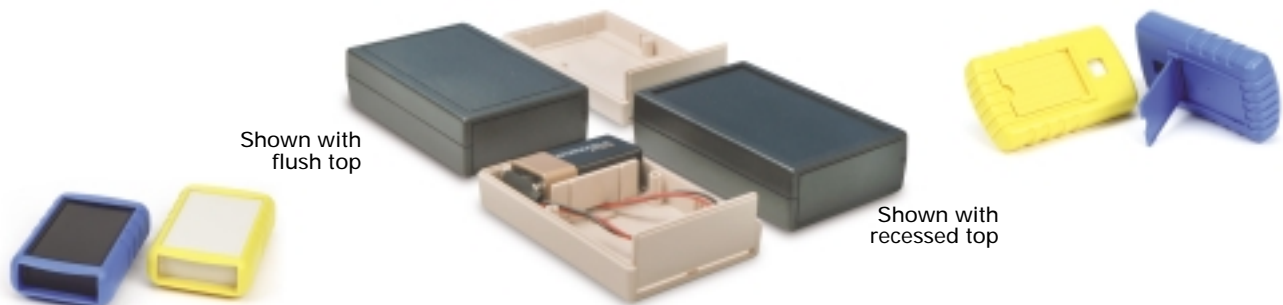
ACCESSORIES

Protective Boot w/Integrated tilt bar	Light Blue Part No.	Dark Blue Part No.	Bright Orange Part No.	Bright Yellow Part No.	Red Part No.	Black Part No.
	40-RBT-LBL	40-RBT-DBL	40-RBT-ORG	40-RBT-YEL	40-RBT-RED	40-RBT-BLK

Battery Clip Sets	9V snap on Part No.
	BAT-9VS

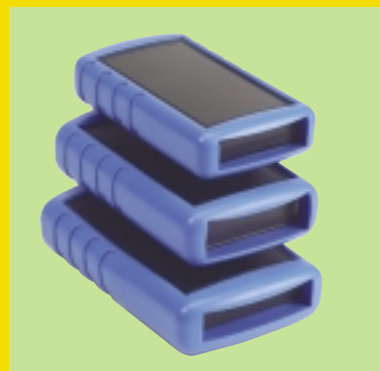
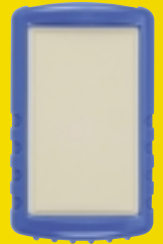
Belt Clips	Bone Part No.	Black Part No.
	CLP-BONE	CLP-BLK

End Plates	ABS, Black Part No.	Transparent Red Part No.	ABS Bone Part No.
Standard End Plate	40-EPBLK	40-EPIR	40-EPBO
Deep Top End Plate	41-EPBLK	41-EPIR	41-EPBO



New for 2004

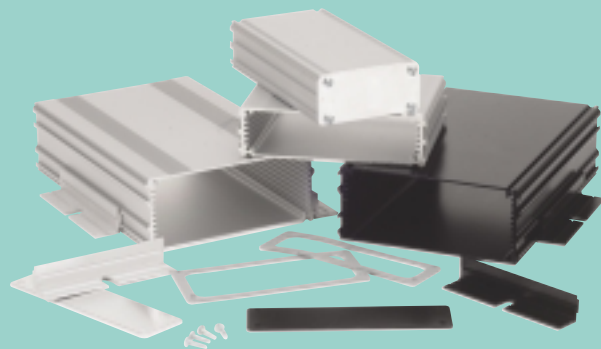
Featuring eight new product lines with protective rubber boots.



NEMA 4 / IP65 Enclosures



Extruded Aluminum



Protective Boots

NEW!



LCD Enclosures



ENCLOSURES & ASSEMBLY SERVICES

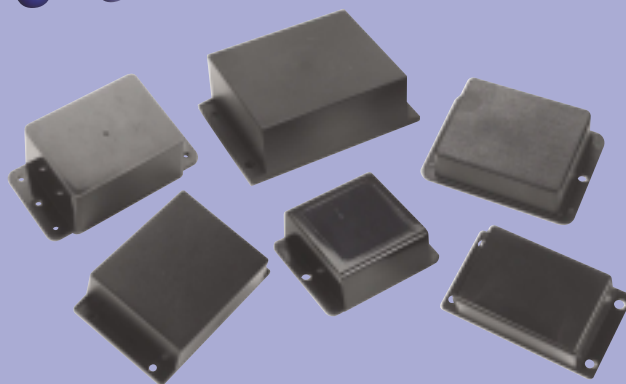
Enclosing electronics one box at a time.



Handheld Enclosures



Flange Cases



See back page for International Distribution Network

X-ON Electronics

Largest Supplier of Electrical and Electronic Components

Click to view similar products for [Other Tools](#) category:

Click to view products by [Box Enclosures](#) manufacturer:

Other Similar products are found below :

[CR-05FL7--150R](#) [CR-05FL7--698K](#) [899-2-KT46](#) [899-5-KT46](#) [CR-0AFL4--332K](#) [CR-12FP4--260R](#) [CRCW04021100FRT7](#)
[CRCW04021961FRT7](#) [5800-0090](#) [CRCW04024021FRT7](#) [CRCW040254R9FRT7](#) [CRCW0603102JRT5](#) [59065-5](#) [00-8273-RDPP](#) [00-8729-](#)
[WHPP](#) [593033](#) [593058](#) [593072](#) [593564100](#) [593575](#) [593591](#) [593593](#) [011349-000](#) [LTLA506SBLAMNBL](#) [CRCW08052740FRT1](#) [LUC-](#)
[012S070DSM](#) [LUC-018S070DSP](#) [599-2021-3-NME](#) [599-JJ-2021-03](#) [00-5080-YWPP](#) [5E4750/01-20R0-T/R](#) [LW1A-L1-GL](#) [LW1A-P1-GD](#)
[LW1L-A1C10V-GL](#) [LW1L-M1C70-A](#) [0202-0173](#) [00-9089-RDPP](#) [00-9300-RDPP](#) [CRCW2010331JR02](#) [01-1003W-8/32-10](#) [601-GP-08-](#)
[KT39](#) [601-JJ-06](#) [601-SPB](#) [601YSY](#) [602-JJ-03](#) [602SPB](#) [602Z](#) [603-JJ-07-FP](#) [603-JJY-04](#) [604J](#)