

INTERCONNECTION

12 Way Nylon Terminal Strips

- Moulded from Natural PA6 (standard, CTSN400), Cream PA66 (CTSN500,) Grey PA66 Glass fibre (CTSN600)
- Available with or without wire protection
- UL94-V2 Self extinguishing as standard
- V0 types pass 960°C glow-wire test
- Easily cut to size
- Can also be supplied pre-cut
- Can be printed on request
- Closed inserts (middle barrier) option
- Captive terminal screws
- CE, RoHS, REACH, UL, CSA approvals



SPECIFICATION

Voltage	CTSN431-433	450VAC
	CTSN434-438	750VAC (UL600VAC)
Working temperature	CTSN400	-30°C to +110°C
	CTSN500	-30°C to +110°C
	CTSN600	-5°C to +180°C
Moulding	CTSN400	UL94-V2 PA6
	CTSN500	UL94-V0 PA66
	CTSN600	UL94-V0 PA66 + GF
Standard insert	Nickel-plated brass	
Terminal screws	Zinc-plated steel CQ-15	
Wire protectors	Stainless steel	

Part Numbers shown are for standard PA6 material (e.g. CTSN433/12)

For CTSN500 PA66 material change first number to 5 (e.g. CTSN533/12)

For CTSN600 PA66+GF material change first number to 6 (e.g. CTSN633/12)

Standard Type

TYPE NO.	PITCH / UL WIRE		INSERT	CABLE	TERMINAL						FIXING HOLE	MAX
	RATING	PROTECTION	DIAMETER	ACCEPTANCE	SCREWS	LENGTH	WIDTH	HEIGHT	PITCH	DIAMETER		CURRENT
CTSN431/12W	8mm/20A	No	3.2mm	4.0mm ² /12AWG	M3	94mm	18mm	15.5mm	8mm	2.8mm		32A
CTSN431/12	8mm/15A	Yes	3.2mm	2.5mm ² /14AWG	M3	94mm	18mm	15.5mm	8mm	2.8mm		32A
CTSN433/12W	10mm/30A	No	3.5mm	6.0mm ² /10AWG	M3	116mm	21mm	16mm	9.95mm	2.8mm		41A
CTSN433/12	10mm/20A	Yes	3.5mm	4.0mm ² /12AWG	M3	116mm	21mm	16mm	9.95mm	2.8mm		41A
CTSN434/12W	12mm/50A	No	4.4mm	10.0mm ² /8AWG	M3.5	140mm	23mm	18.5mm	12mm	2.8mm		57A
CTSN434/12	12mm/30A	Yes	4.4mm	6.0mm ² /10AWG	M3.5	140mm	23mm	18.5mm	12mm	2.8mm		57A
CTSN435/12W	14mm/65A	No	6.0mm	16.0mm ² /6AWG	M4	166mm	29mm	23mm	14mm	3.5mm x 6.4 slot		76A
CTSN435/12	14mm/65A	Yes	6.0mm	10.0mm ² /8AWG	M4	166mm	29mm	23mm	14mm	3.5mm x 6.4 slot		76A
CTSN438/12W	18mm/85A	No	7.5mm	25.0mm ² /4AWG	M5	205mm	36.5mm	30.5mm	17.4mm	3.4mm		101A

Raised Base

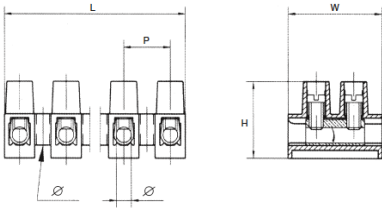
TYPE NO.	PITCH / UL WIRE		INSERT	CABLE	TERMINAL						FIXING HOLE	MAX
	RATING	PROTECTION	DIAMETER	ACCEPTANCE	SCREWS	LENGTH	WIDTH	HEIGHT	PITCH	DIAMETER		CURRENT
CTSN431/12WR	8mm/20A	No	3.2mm	4.0mm ² /12AWG	M3	94mm	18mm	17.2mm	8mm	2.8mm		32A
CTSN431/12R	8mm/20A	Yes	3.2mm	2.5mm ² /14AWG	M3	94mm	18mm	17.2mm	8mm	2.8mm		32A
CTSN433/12WR	10mm/30A	No	3.5mm	6.0mm ² /10AWG	M3	116mm	21mm	17.8mm	10mm	2.8mm		41A
CTSN433/12R	10mm/30A	Yes	3.5mm	4.0mm ² /12AWG	M3	116mm	21mm	17.8mm	10mm	2.8mm		41A
CTSN434/12WR	12mm/50A	No	4.4mm	10.0mm ² /8AWG	M3.5	140mm	23mm	20.5mm	12mm	2.8mm		57A
CTSN434/12R	12mm/50A	Yes	4.4mm	6.0mm ² /10AWG	M3.5	140mm	23mm	20.5mm	12mm	2.8mm		57A
CTSN435/12WR	14mm/65A	No	6.0mm	16.0mm ² /6AWG	M4	166mm	29mm	25.8mm	14mm	3.5mm x 6.4 slot		76A
CTSN435/12R	14mm/65A	Yes	6.0mm	10.0mm ² /8AWG	M4	166mm	29mm	25.8mm	14mm	3.5mm x 6.4 slot		76A

Alternative Options

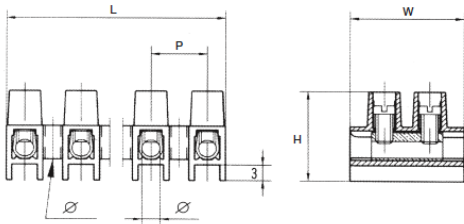
TYPE NO.	PITCH / UL WIRE		INSERT	CABLE	TERMINAL						FIXING HOLE	MAX
	RATING	PROTECTION	DIAMETER	ACCEPTANCE	SCREWS	LENGTH	WIDTH	HEIGHT	PITCH	DIAMETER		CURRENT
CTSN433/12WL	10mm/30A	No	3.5mm	6.0mm ² /10AWG	M3	116mm	31mm	16.8mm	10mm	2.8mm		41A
CTSN433/12L	10mm/30A	Yes	3.5mm	4.0mm ² /12AWG	M3	116mm	31mm	16.8mm	10mm	2.8mm		41A
CTSN433/12WLC	10mm/30A	No	3.5mm	6.0mm ² /10AWG	M3	116mm	31mm	21.5mm	10mm	2.8mm		41A
CTSN433/12LC	10mm/30A	Yes	3.5mm	4.0mm ² /12AWG	M3	116mm	31mm	21.5mm	10mm	2.8mm		41A
CTSN433/12WT	10mm/30A	No	3.5mm	6.0mm ² /10AWG	M3	116mm	21mm	16mm	9.95mm	2.1mm		41A
CTSN433/12T	10mm/30A	Yes	3.5mm	4.0mm ² /12AWG	M3	116mm	21mm	16mm	9.95mm	2.1mm		41A
CTSN433/12WTR	10mm/30A	No	3.5mm	6.0mm ² /10AWG	M3	116mm	21mm	17.8mm	9.95mm	3.8mm		41A
CTSN433/12TR	10mm/30A	Yes	3.5mm	4.0mm ² /12AWG	M3	116mm	21mm	17.8mm	9.95mm	3.8mm		41A
CTSN433/12WTRG	10mm/30A	No	3.5mm	6.0mm ² /10AWG	M3	116mm	21mm	17.6mm	9.95mm	3.6mm		41A
CTSN433/12TRG	10mm/30A	Yes	3.5mm	4.0mm ² /12AWG	M3	116mm	21mm	17.6mm	9.95mm	3.6mm		41A
CTSN433/12WS	10mm/30A	No	3.5mm	6.0mm ² /10AWG	M3	116mm	21mm	17.3mm	10mm pin	3.5mm drill		41A
CTSN433/12S	10mm/30A	Yes	3.5mm	4.0mm ² /12AWG	M3	116mm	21mm	17.3mm	10mm pin	3.5mm drill		41A
CTSN433/12WQ	10mm/30A	No	3.5mm	6.0mm ² /10AWG	M3	116mm	21mm	18.1mm	9.95mm	2.8mm		41A
CTSN433/12Q	10mm/30A	Yes	3.5mm	4.0mm ² /12AWG	M3	116mm	21mm	18.1mm	9.95mm	2.8mm		41A

INTERCONNECTION

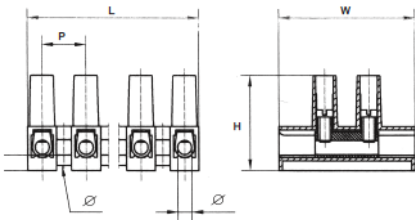
Standard type, no wire protection



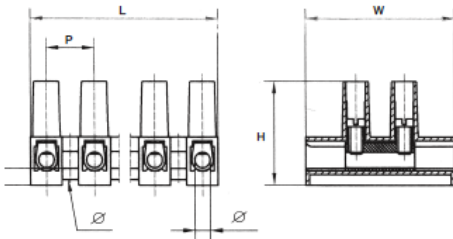
Raised base types - provides increased isolation



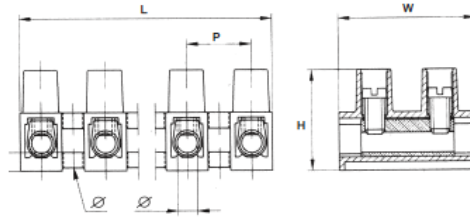
CTSN433/12LC larger isolating surface per pole and screw tower.
Complies with EN60598/1 4.7 and 11.2



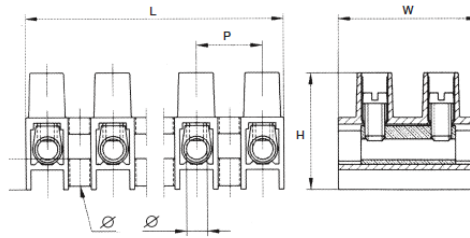
CTSN433/12L larger isolating surface per pole (750V, test voltage 3,000V)
Complies with EN60598/1 4.7 and 11.2



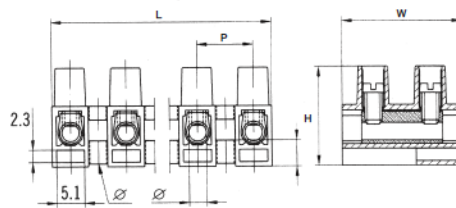
CTSN433/12T fast fixing hole between poles



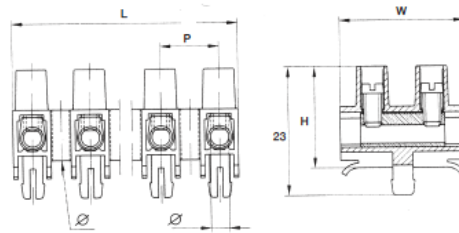
CTSN433/12TR fast fixing hole between poles and raised base



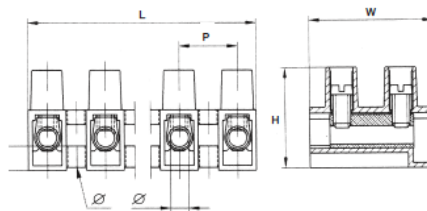
CTSN433/12TRG fast fixing hole between poles, raised base and socket in the base



CTSN433/12S fixing pin



CTSN433/12Q fixing hole between poles and wide base terminal connection



PCB
TERMINAL
BLOCKS

INTER-
CONNECTION

FUSES &
FUSE-
HOLDERS

LEDs &
INDICATORS

MINIATURE
SWITCHES

LIMIT &
SAFETY
SWITCHES

CONTROL
PRODUCTS

INTERFACE
MODULES &
SUPPORTS

RELAY
BASES

ENCLOSURES

BATTERIES

TRANS-
FORMERS



X-ON Electronics

Largest Supplier of Electrical and Electronic Components

Click to view similar products for [camden manufacturer](#):

Other Similar products are found below :

[412689X](#) [CTBP92HE/10](#) [CTBP92VE/12R](#) [CTBP9350/12](#) [IND515205-240-T/GRN](#) [IND515205-240-T/RD](#) [IND5032405-240-T/GRN](#)
[CE10.00.EI](#) [C192SHAND](#) [RTM5006/16-PAT](#) [CNMB/6ST/2](#) [CNMB/4ST/2](#) [CSACST004](#) [CTBP9200/9](#) [CIME/M/BE2250SS](#) [CHH64E1BL](#)
[CIM/15W-DMFS](#) [CHHBAT2GY](#) [CFTBN/2](#) [CCB2S1/04](#) [CHDX6-222C](#) [CHDX8-224](#) [CHDASMP29](#) [CHDASMP34](#) [CHDX810DD](#)
[CHDX811DD](#) [CCTTM40LR](#) [CTBP92VJ/5S](#) [CTBP92VJ/8R](#) [CTSN431/12/M](#) [CTSN433/12/M](#) [CUABOX006](#) [IND513113-LED-RD](#)
[CE10.00.FM](#) [CBRPH-BLK](#) [RX2008/S-5-WH](#) [CBARD-CAR](#) [CRDCG0007](#) [CNMB/4/KIT](#) [CTB5050/5](#) [CTBP92HE/11](#) [CTBP9358/10AO](#)
[CHH66C2GY](#) [CHH456PBK](#) [CHH451ABK](#) [CIM/9W-DMFS](#) [CIM/25W-DMFS](#) [RTM5004/14-NC-BLK](#) [RTM5006/16-NC-BLK](#)
[IND5032405-125-T/AMB](#)