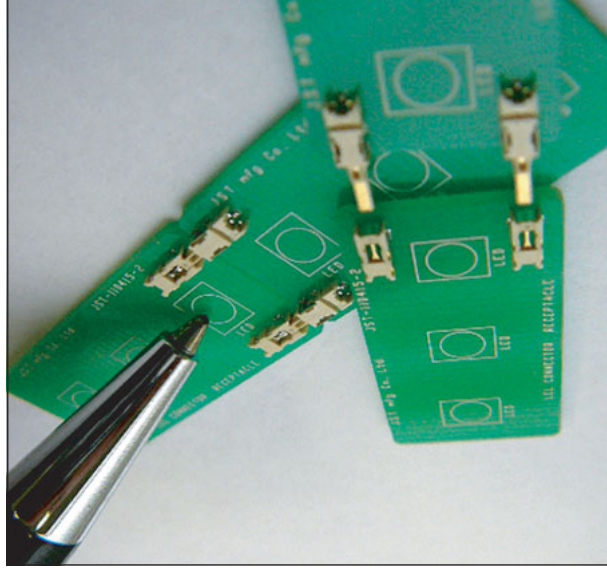


# NEW PRODUCT

## LEL CONNECTOR

For LED Lamp (board to board connection)



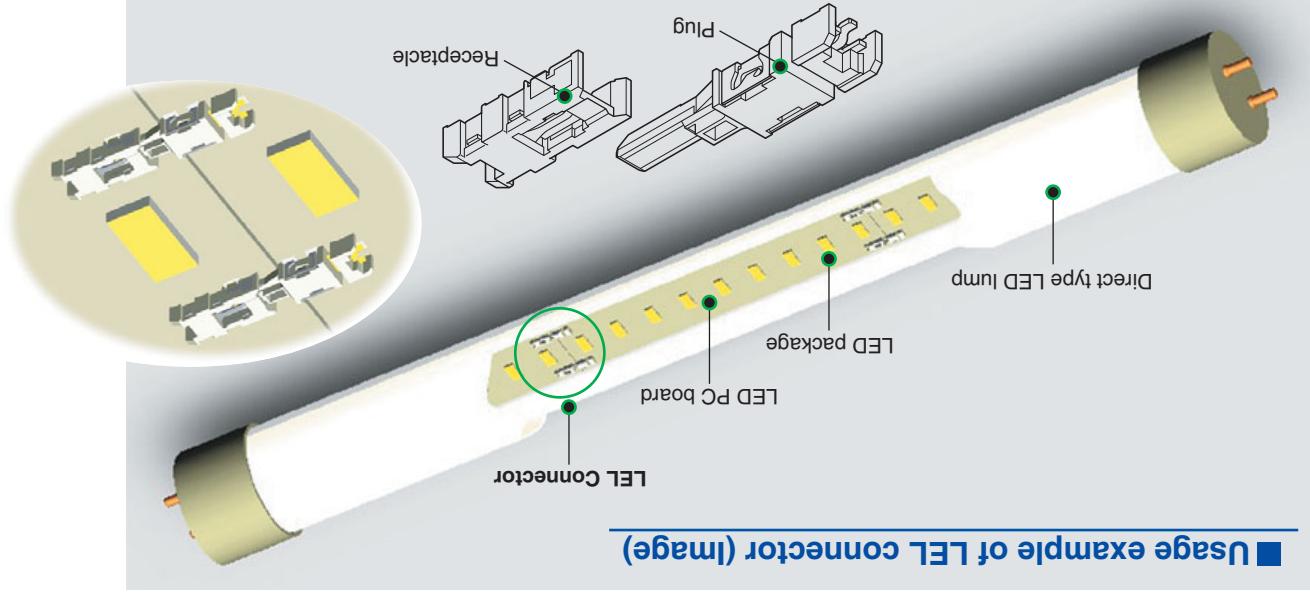
Considering about luminescence property of LED package, this LEL connector is designed as low profile type connector for LED lighting, and achieves the space saving. The horizontal connection between PCBs enables and the mechanism of absorbing the PCB misalignment has been installed considering the parallel use for the connector. Bellows type contact that has a high contact pressure and a high durability performance (receptacle side) and enough mating stroke provides the stable contact performance even if the PCB expands and contracts due to heat.



### ■ Features

- **Absorption misalignment mechanism (X, Y, Z, and θ directions)**
- **Low profile and space saving design**  
*Height: 1.2mm Width: 2.0mm*
- **Mechanism for preventing wrong insertion**
- **Halogen-free and RoHS compliant**
- **The gold plating is conducted due to the long-life of LED lighting equipment.**

### ■ Usage example of LEL connector (Image)



### ■ Specifications

- Current rating : 1.6A AC, DC
- Voltage rating : 100V AC, DC
- Temperature : -55°C to +105°C (including temperature range rise in applying electrical current)
- Contact resistance : Initial value/40mΩ max. After environmental testing/60mΩ max.
- Plating specification : Nickel-undercoated, Selective gold-plated
- No. of Circuits : 1-circuit
- Part number : Plug/01P-LELSS-GA-TF(HF)
- Receptacle/01R-LELSS-GA-TF(HF)

## X-ON Electronics

Largest Supplier of Electrical and Electronic Components

*Click to view similar products for [FFC & FPC Connectors](#) category:*

*Click to view products by [JST manufacturer](#):*

Other Similar products are found below :

[HFW11R-1STE1H1LF](#) [FH29B-100S-0.2SHW\(99\)](#) [FA5S008HP1](#) [FH29B-120S-0.2SHW\(99\)](#) [FH29B-80S-0.2SHW\(99\)](#) [FHS-16](#) [FPH-2022G](#)  
[52610-1075](#) [52610-1275](#) [52610-1934](#) [XF3M\(1\)-1415-1B-R100](#) [501864-3091-TR225](#) [0525594033](#) [086210010340800](#) [086222026001800](#)  
[52271-2869-CUT-TAPE](#) [62674-201121DLF](#) [62684-36210E9ALF](#) [52610-1675](#) [52746-1671-TR250](#) [10051922-2810EHLF](#) [6-520415-9](#)  
[BD021-09A-A1-0350-0200-0550-LD](#) [SFV6R-1STE9HLF](#) [XF3M-2915-1B-R100](#) [1658549-1](#) [62674-221121ALF](#) [46214008010800](#)  
[046298003000883](#) [151660622](#) [842-816-2630-035](#) [AYF530665TA](#) [AYF351525](#) [046296011930846+](#) [AYF352325A](#) [046254020000800+](#)  
[FH19C-13S-0.5SH\(99\)](#) [FH39J-51S-0.3SHW\(99\)](#) [AYF355125A](#) [AYF530365TA](#) [FH29B-44S-0.2SHW\(99\)](#) [SFW5R-2STAE9LF](#) [AYF351125A](#)  
[AYF350725A](#) [62684-502100AHLF](#) [FH39-61S-0.3SHW\(99\)](#) [AYF414035A](#) [10064555-172520HLF](#) [AYF212335A](#) [504754-2500](#)