

22000 MOUNT



(1) Natural frequency:
8 to 18 Hz

DESCRIPTION

The 22000 mount is made of two parts of elastomer bonded to a central tube.

- Interior reinforced: cylindrical tube.
- Elastomer: chloroprene. Range of five different stiffnesses.

OPERATION

The design of the 22000 mount gives the following basic characteristics.

- Elastomer element resistant to oils, supporting axial and radial loadings.
- Axial to radial stiffness of 1 : 1.
- Absorb vibrations and reduce noise in all directions.

Advantages :

- Good isolation against structural noises.
- Chloroprene resistant to oils.
- Simple and economical.
- Simple to fix.
- Five sizes for a load capacity under axial pressure from 15 to 2100 kg and under radial pressure until 650 kg.
- Anti-rebound effect when it is assembled with a washer.

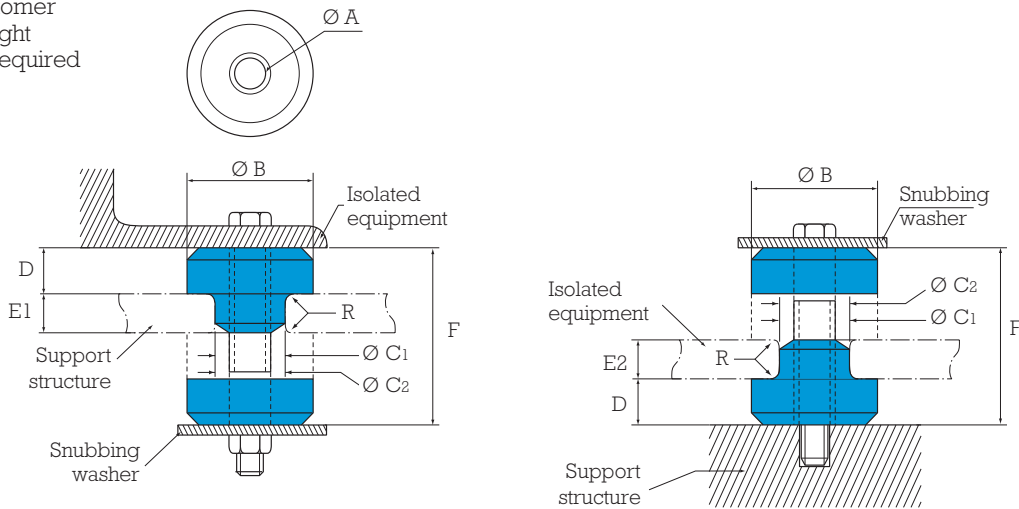
APPLICATIONS

22000 mounts can be used in static or mobile applications, such as: pumps, compressors, generators, electronic equipment, HVAC equipment, engines with internal combustion, transmissions, plant cabs, radiators, etc.

(1) Natural frequencies with max/min loads, see : OPERATING CHARACTERISTICS.

DIMENSIONS CHARACTERISTICS

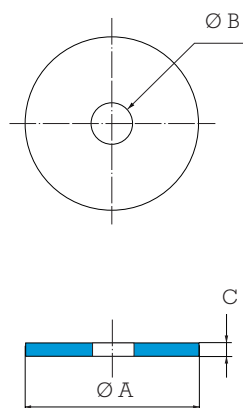
C1 : \varnothing mounting hole
 C2 : \varnothing elastomer
 F : Free height
 R : Radius required



| Paulstra reference | Barry Controls* reference | $\varnothing A$ mm | $\varnothing B$ mm | $\varnothing C1$ mm | $\varnothing C2$ mm | D mm | E1 mm | E2 mm | F mm | R mm | Weight g |
|--------------------|---------------------------|--------------------|--------------------|---------------------|---------------------|------|-------|-------|------|------|----------|
| 530903 11 / 15 | 22001-11 / 15 | 10.4 | 33.2 | 19 | 20.1 | 12.3 | 9.5 | 9.5 | 31.7 | 1 | 43 |
| 530903 21 / 25 | 22002-11 / 15 | 13.5 | 47.7 | 31.7 | 33 | 19.8 | 14 | 12.5 | 49.2 | 1.5 | 142 |
| 530903 31 / 35 | 22003-11 / 15 | 16.7 | 64.8 | 38.1 | 40.1 | 22.8 | 22 | 19 | 61.7 | 2.3 | 313 |
| 530903 41 / 45 | 22004-11 / 15 | 23.8 | 88.9 | 57.1 | 58.4 | 25.4 | 28.5 | 25.5 | 73.1 | 3 | 670 |
| 530903 51 / 55 | 22005-11 / 15 | 27 | 123.9 | 63.5 | 64.8 | 31.7 | 32 | 25.5 | 85.8 | 3 | 1306 |

See current price list for availability of items.

1 kg \approx 1 daN



Washers are recommended for the assembly of the mount. They make it possible to carry out debouncing.

| PAULSTRA Reference* | Washer | | | |
|---------------------|--------------------|--------------------|------|----------|
| | $\varnothing A$ mm | $\varnothing B$ mm | C mm | Weight g |
| 530903 11 / 15 | 39.6 | 10.3 | 2.2 | 24 |
| 530903 21 / 25 | 54.1 | 13.5 | 3.4 | 54 |
| 530903 31 / 35 | 71.3 | 16.7 | 4.7 | 140 |
| 530903 41 / 45 | 98.5 | 23.8 | 6.3 | 368 |
| 530903 51 / 55 | 133.3 | 27.0 | 9.5 | 991 |

* References given as an indication.

OPERATING CHARACTERISTICS

The maximum loadings depend on the compression of the assembly by comparing the thicknesses E1 and E2.

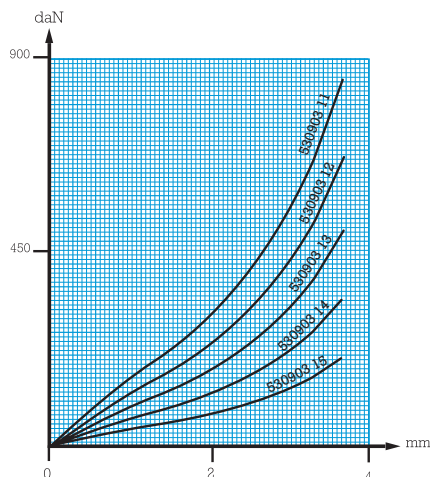
| Paulstra reference | Barry Controls* reference | Support structure E1 Load per mount | | | | Support structure E2 Load per mount | | | |
|--------------------|---------------------------|--|------------|-------|-------|--|------------|-------|-------|
| | | Axial daN | Radial daN | Fo Hz | E1 mm | Axial daN | Radial daN | Fo Hz | E1 mm |
| 530903 11 | 22001-11 | 18 | 9 | | | 18 | 9 | | |
| 530903 12 | 22001-12 | 40 | 13 | | | 40 | 13 | | |
| 530903 13 | 22001-13 | 63 | 18 | 15 | 9.5 | 63 | 18 | 15 | 9.5 |
| 530903 14 | 22001-14 | 113 | 22 | | | 113 | 22 | | |
| 530903 15 | 22001-15 | 136 | 27 | | | 136 | 27 | | |
| 530903 21 | 22002-11 | 59 | 22 | | | 27 | 18 | | |
| 530903 22 | 22002-12 | 79 | 29 | | | 54 | 36 | | |
| 530903 23 | 22002-13 | 109 | 40 | 12 | 14 | 72 | 56 | 15 | 12.5 |
| 530903 24 | 22002-14 | 172 | 75 | | | 118 | 81 | | |
| 530903 25 | 22002-15 | 286 | 127 | | | 172 | 127 | | |
| 530903 31 | 22003-11 | 95 | 40 | | | 40 | 31 | | |
| 530903 32 | 22003-12 | 159 | 63 | | | 68 | 47 | | |
| 530903 33 | 22003-13 | 222 | 102 | 11 | 22 | 102 | 72 | 15 | 25.5 |
| 530903 34 | 22003-14 | 390 | 175 | | | 147 | 111 | | |
| 530903 35 | 22003-15 | 604 | 313 | | | 227 | 163 | | |
| 530903 41 | 22004-11 | 122 | 61 | | | 68 | 50 | | |
| 530903 42 | 22004-12 | 231 | 104 | | | 136 | 100 | | |
| 530903 43 | 22004-13 | 350 | 156 | 10 | 28.5 | 181 | 136 | 15 | 25.5 |
| 530903 44 | 22004-14 | 531 | 268 | | | 227 | 181 | | |
| 530903 45 | 22004-15 | 954 | 443 | | | 272 | 263 | | |
| 530903 51 | 22005-11 | 518 | 109 | | | 136 | 68 | | |
| 530903 52 | 22005-12 | 877 | 154 | | | 227 | 100 | | |
| 530903 53 | 22005-13 | 1172 | 277 | 10 | 32 | 318 | 136 | 15 | 25.5 |
| 530903 54 | 22005-14 | 1609 | 404 | | | 409 | 213 | | |
| 530903 55 | 22005-15 | 2072 | 640 | | | 545 | 300 | | |

See current price list for availability of items.

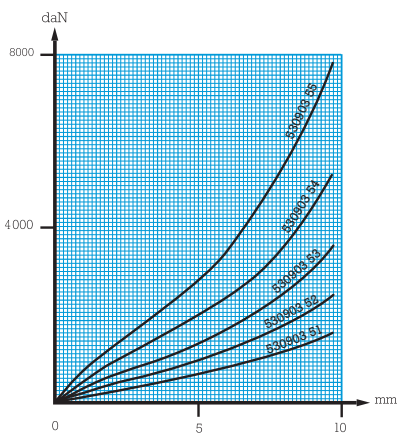
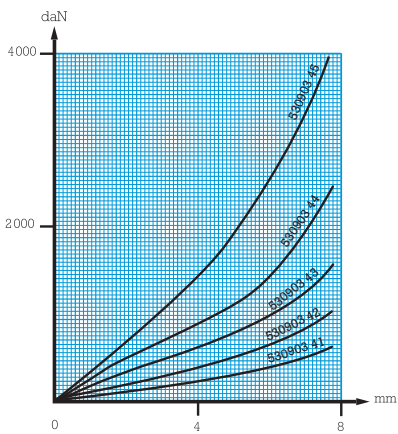
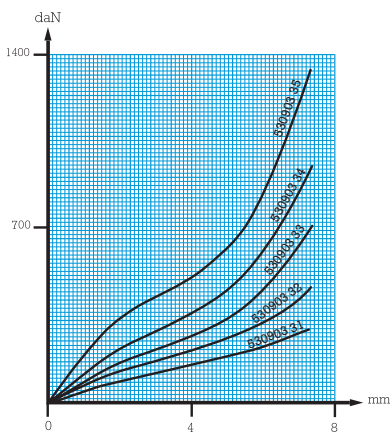
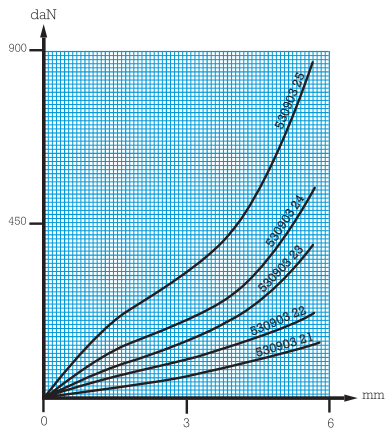
1 kg ≈ 1 daN

LOAD/DEFLECTION CURVES IN AXIAL COMPRESSION

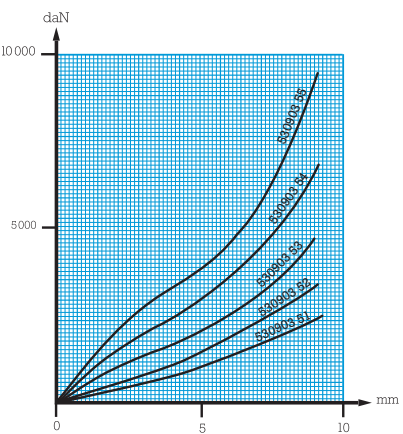
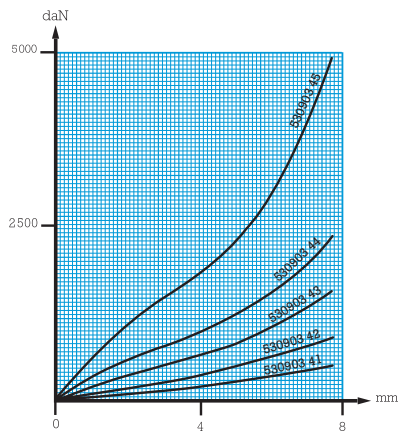
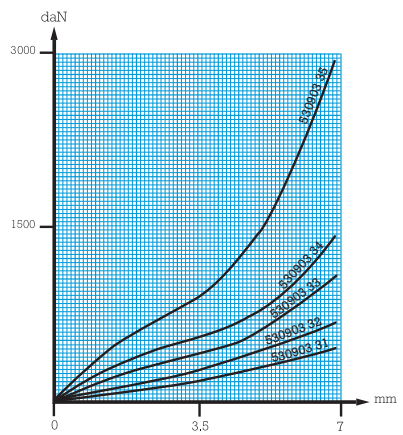
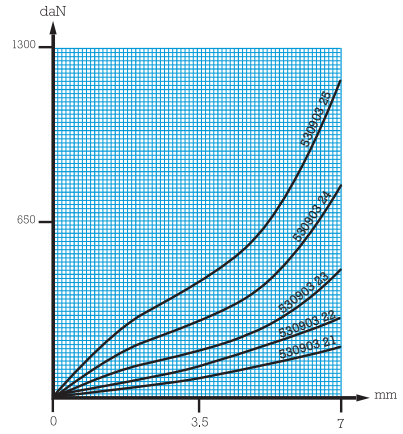
Assembly type E1 and E2



Assembly type E1



Assembly type E2



X-ON Electronics

Largest Supplier of Electrical and Electronic Components

Click to view similar products for [barry controls](#) manufacturer:

Other Similar products are found below :

[C1035](#) [C1010](#) [C1015](#)