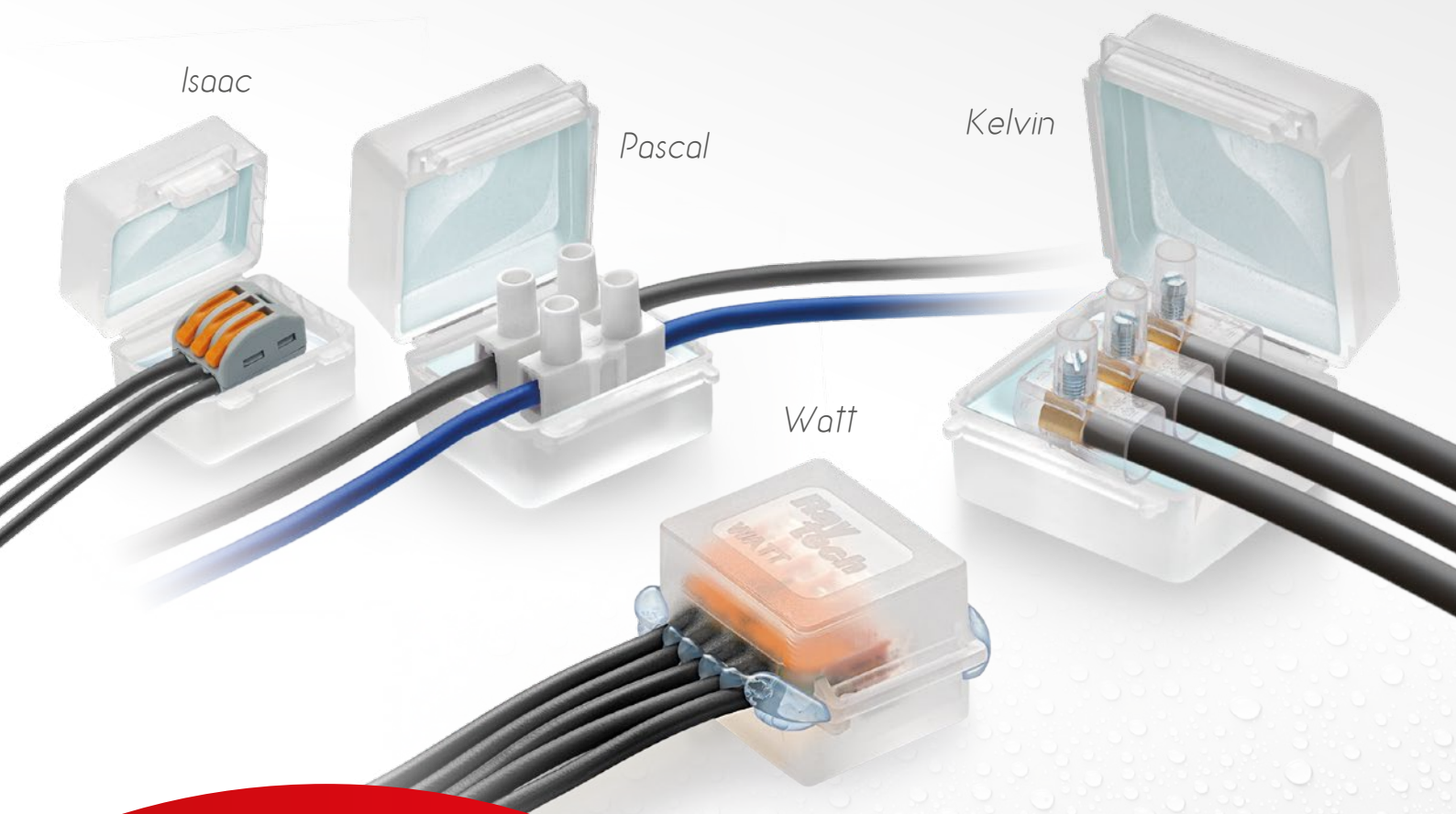


**NEW**

# Gel Box Line

*a simple way to bring indoor connectors outdoors*




**Ray  
Tech**<sup>®</sup>

CABLE ACCESSORIES COMPANY

**ACCESSORIES**  
**PRE-FILLED WITH GEL**  
*for free connections*

Gel: UL 94-HB

Degree of protection: IPX8

Operating temperature  90°

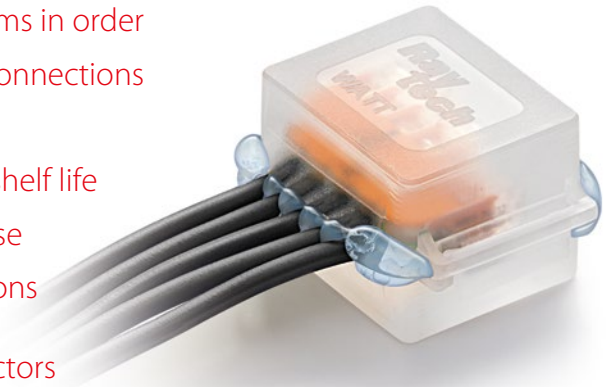
Installation temperature:  -40°C / +50°C

Fully submersible 

Can be used underground 

# Gel Box Line

- To put household systems in order
- For civil and industrial connections
- Also for submerged use
- Non-toxic and with no shelf life
- Versatile and ready to use
- Designed with dimensions suitable for the most commonly used connectors



## Isaac



Product	Description	Package	Internal dimensions (mm)
Isaac 4	x 4 pieces	Blister	A x B x C 30 x 24 x 23
Isaac 4 P30	x 30 pieces	Box	
Isaac 4 MP *	x 50 pieces	Multipack	

\* Also available the flame retardant version in the following colours: yellow, orange, blue or black



## Pascal



Product	Description	Package	Internal dimensions (mm)
Pascal 6	x 2 pieces	Blister	A x B x C 38 x 30 x 26
Pascal 6 P15	x 15 pieces	Box	
Pascal 6 MP *	x 25 pieces	Multipack	

\* Also available the flame retardant version in the following colours: yellow, orange, blue or black



## Watt



Product	Description	Package	Internal dimensions (mm)
Watt	x 2 pieces	Blister	A x B x C 30 x 38 x 26
Watt P15	x 15 pieces	Box	
Watt MP *	x 25 pieces	Multipack	

\* Also available the flame retardant version in the following colours: yellow, orange, blue or black



max 5 wires  
max 4 mm<sup>2</sup>



max 3 wires  
max 2.5 mm<sup>2</sup>

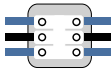


## Kelvin



Product	Description	Package	Internal dimensions (mm)
Kelvin	x 1 pieces	Blister	A x B x C
Kelvin MP *	x 20 pieces	Multipack	45 x 45 x 30

\* Also available the flame retardant version in the following colours: yellow, orange, blue or black



max 3 wires  
max 6 mm<sup>2</sup>



max 3 wires  
max 6 mm<sup>2</sup>



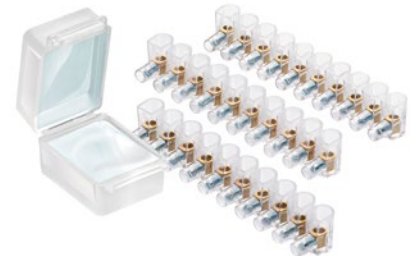
## Watt +



Product	Description	Package	Internal dimensions (mm)
Watt + 1.5	10 pieces + 30 connectors/terminations da 1,5 mm <sup>2</sup>	Box	A x B x C 30 x 38 x 26
Watt + 2.5	10 pieces + 30 connectors terminations da 2,5 mm <sup>2</sup>	Box	



max 3 wires  
max 2.5 mm<sup>2</sup>



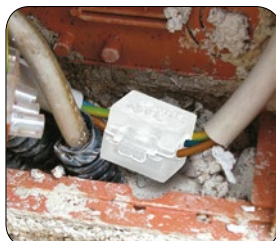
## Kelvin +



Product	Description	Package	Internal dimensions (mm)
Kelvin + 4	10 pieces + 30 connectors/terminations da 4 mm <sup>2</sup>	Box	A x B x C 45 x 45 x 30
Kelvin + 6	10 pieces + 30 connectors/terminations da 6 mm <sup>2</sup>	Box	

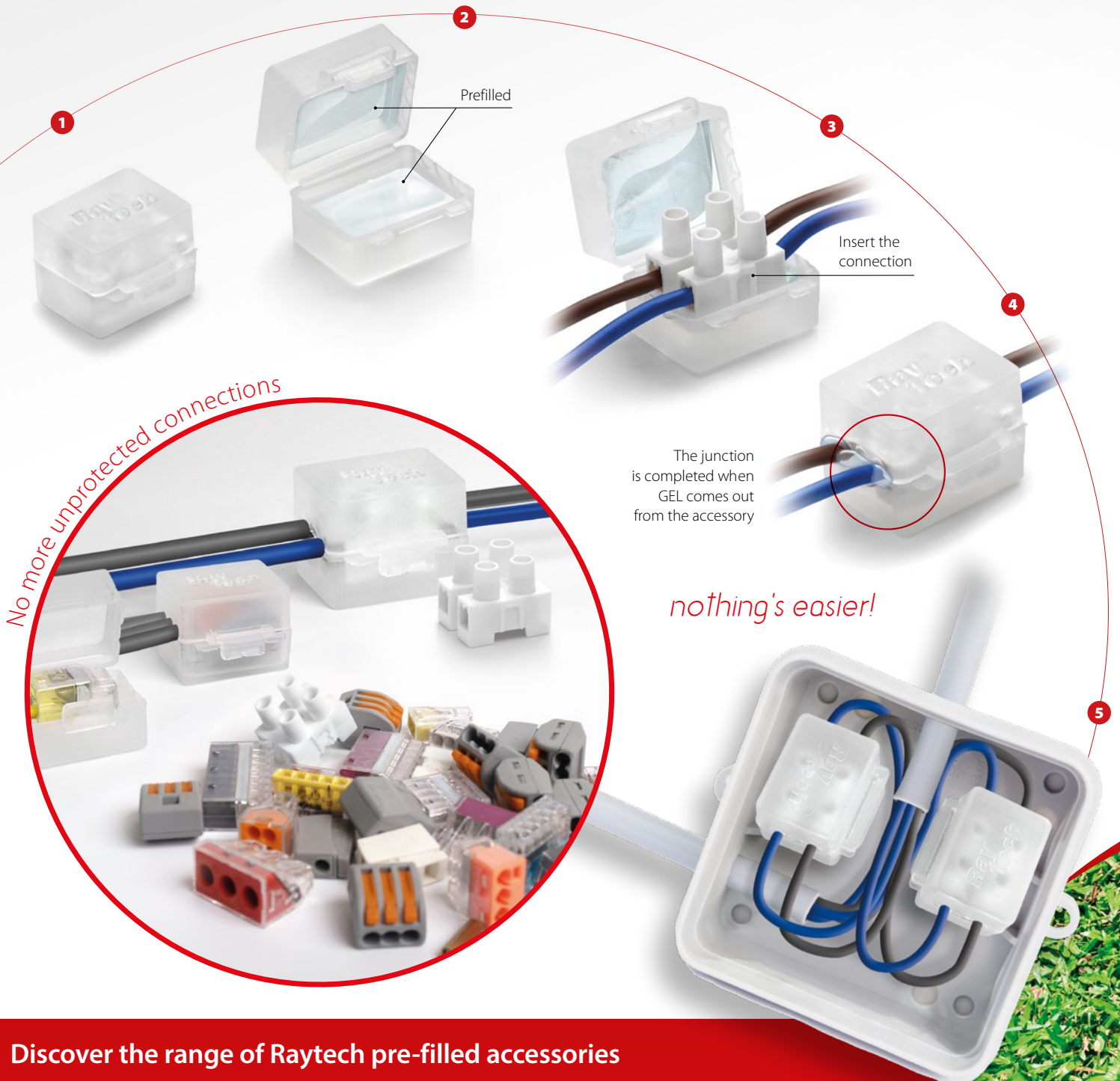


max 3 wires  
max 6 mm<sup>2</sup>



# Gel Box Line

Pre-filled gel accessories for sealing, protecting and making safe electrical connections



Discover the range of Raytech pre-filled accessories



King Joint



Rapid Joint



Clik Fire



Joints A2A



Mammut Gel Cover

Consult or request the full catalogue on [Raytech.it](http://Raytech.it)

**Ray  
tech**

## **X-ON Electronics**

Largest Supplier of Electrical and Electronic Components

*Click to view similar products for [raytech](#) manufacturer:*

Other Similar products are found below :

[WONDER FLUID](#) [MAGIC RUBBER 500](#) [MONOGEL](#) [TECHNO GEL GUM](#) [MAGIC GEL](#) [KELVIN-MP](#) [MAGIC GEL 300](#) [PASCAL6-MP](#)