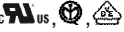
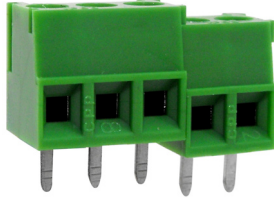


# PCB TERMINAL BLOCKS

## 3.5mm Pitch Ultra Low Profile Rising Clamp Terminal

- 2-12 pole interlocking
- 4-12 pole pre-assembled
- Ultra low profile
- Moulded in green UL94-V0 flame retardant PA
- Professional rising clamp terminals
- 0.2-1.5mm<sup>2</sup> (30-16AWG) solid cable
- 0.2-1.0mm<sup>2</sup> (30-16AWG) stranded cable
- Captive screws
- Guided pin alignment
- Double interlock mechanism for increased strength
-  approved

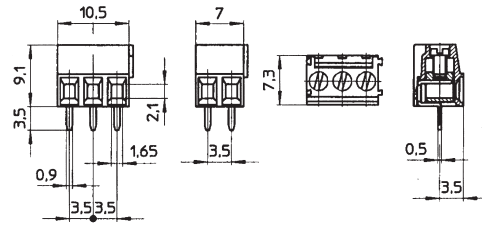
CTB0305




TYPE NO.	POLES	LENGTH
CTB0305/2	2	7mm
CTB0305/3	3	10.5mm
CTB0305/4	4	14mm
CTB0305/5	5	17.5mm
CTB0305/6	6	21mm
CTB0305/7	7	24.5mm
CTB0305/8	8	28mm
CTB0305/9	9	31.5mm
CTB0305/10	10	35mm
CTB0305/11	11	38.5mm
CTB0305/12	12	42mm

### SPECIFICATION

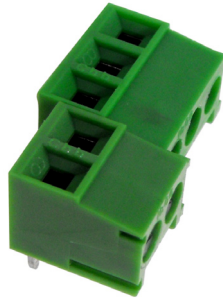
Rating	10A/160V UL=10A/300V, VDE&IMQ=10A/130V
Dielectric strength	2.5kV
Working temperature	110°C
Moulding	UL94-V0 flame retardant PA
Pin/terminal	Tinned, nickel plated brass
Screw/torque	M2 steel zinc plated, 0.3Nm
Recommended PCB hole size	ø1.1mm



## 3.5mm Pitch Ultra Low Profile 90° Rising Clamp Terminal

- 2-12 pole interlocking
- 4-12 pole pre-assembled
- Ultra low profile
- Moulded in green UL94-V0 flame retardant PA
- Professional rising clamp terminals
- 0.2-1.5mm<sup>2</sup> (30-16AWG) solid cable
- 0.2-1.0mm<sup>2</sup> (30-16AWG) stranded cable
- Captive screws
- Guided pin alignment
- Double interlock mechanism for increased strength
-  approved

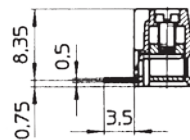
CTB0355



TYPE NO.	POLES	LENGTH
CTB0355/2	2	7mm
CTB0355/3	3	10.5mm
CTB0355/4	4	14mm
CTB0355/5	5	17.5mm
CTB0355/6	6	21mm
CTB0355/7	7	24.5mm
CTB0355/8	8	28mm
CTB0355/9	9	31.5mm
CTB0355/10	10	35mm
CTB0355/11	11	38.5mm
CTB0355/12	12	42mm

### SPECIFICATION

Rating	10A/160V UL=10A/300V, VDE&IMQ=10A/130V
Dielectric strength	1.5kV
Impulse withstand voltage	2.5kV
Working temperature	110°C
Moulding	UL94-V0 flame retardant PA
Pin/terminal	Tinned, nickel plated brass
Rising clamp	Nickel plated brass
Screw/torque	M2 steel zinc plated, 0.3Nm
Recommended PCB hole size	ø1.1mm



PCB  
TERMINAL  
BLOCKS

INTER-  
CONNECTION

FUSES &  
FUSE-  
HOLDERS

LEDs &  
INDICATORS

MINIATURE  
SWITCHES

LIMIT &  
SAFETY  
SWITCHES

CONTROL  
PRODUCTS

INTERFACE  
MODULES &  
SUPPORTS

RELAY  
BASES

ENCLOSURES

BATTERIES

TRANS-  
FORMERS

## **X-ON Electronics**

Largest Supplier of Electrical and Electronic Components

*Click to view similar products for [camden manufacturer](#):*

Other Similar products are found below :

[412689X](#) [CTBP92HE/10](#) [CTBP92VE/12R](#) [CTBP9350/12](#) [IND515205-240-T/GRN](#) [IND515205-240-T/RD](#) [IND5032405-240-T/GRN](#)  
[CE10.00.EI](#) [C192SHAND](#) [RTM5006/16-PAT](#) [CNMB/6ST/2](#) [CNMB/4ST/2](#) [CSACST004](#) [CTBP9200/9](#) [CIME/M/BE2250SS](#) [CHH64E1BL](#)  
[CIM/15W-DMFS](#) [CHHBAT2GY](#) [CFTBN/2](#) [CCB2S1/04](#) [CHDX6-222C](#) [CHDX8-224](#) [CHDASMP29](#) [CHDASMP34](#) [CHDX810DD](#)  
[CHDX811DD](#) [CCTTM40LR](#) [CTBP92VJ/5S](#) [CTBP92VJ/8R](#) [CTSN431/12/M](#) [CTSN433/12/M](#) [CUABOX006](#) [IND513113-LED-RD](#)  
[CE10.00.FM](#) [CBRPH-BLK](#) [RX2008/S-5-WH](#) [CBARD-CAR](#) [CRDCG0007](#) [CNMB/4/KIT](#) [CTB5050/5](#) [CTBP92HE/11](#) [CTBP9358/10AO](#)  
[CHH66C2GY](#) [CHH456PBK](#) [CHH451ABK](#) [CIM/9W-DMFS](#) [CIM/25W-DMFS](#) [RTM5004/14-NC-BLK](#) [RTM5006/16-NC-BLK](#)  
[IND5032405-125-T/AMB](#)