
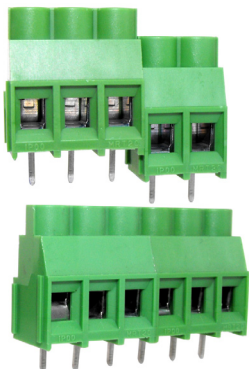


PCB TERMINAL BLOCKS

6.35mm Pitch High Power Rising Clamp Terminal

- 2 & 3 pole double interlocking mechanism for increased strength
- Moulded in green UL94-V0 flame retardant PA
- Professional rising clamp terminals
- 0.2-6.0mm² (30-10AWG) solid & stranded cable
- Guided pin alignment
- Captive screws
-  approved

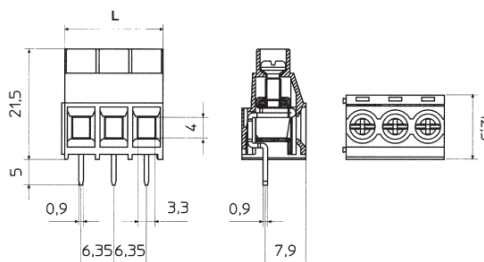
CTB04VY




TYPE NO.	POLES	LENGTH
CTB04VY/2	2	12.7mm
CTB04VY/3	3	19.1mm
CTB04VY/4	4	25.4mm
CTB04VY/5	5	31.8mm
CTB04VY/6	6	38.1mm
CTB04VY/7	7	44.5mm
CTB04VY/8	8	50.8mm
CTB04VY/9	9	57.2mm
CTB04VY/10	10	63.5mm
CTB04VY/11	11	69.9mm
CTB04VY/12	12	76.2mm

SPECIFICATION

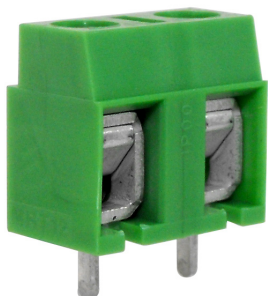
Rating	32A/400V UL=24A/300V, VDE&IMQ=32A/450V
Dielectric strength	≥2kV
Impulse withstand voltage	6kV
Working temperature	110°C
Moulding	UL94-V0 flame retardant PA
Pin/terminal	Tinned, nickel plated brass
Clamp	Zinc plated steel
Screw/torque	M3 steel zinc plated, 0.5Nm
Recommended PCB hole size	ø1.1mm



7.5mm Pitch Commercial Low Profile Screw Terminal

- 2 pole solid block
- End stackable
- Moulded in green UL94-V0 flame retardant PA
- Wire protector terminals
- 0.5-4.0mm² (30-12AWG) solid cable
- 0.5-2.5mm² (30-12AWG) stranded cable
- Captive screws
- Anti solder wicking terminal
- Guided pin alignment
-  approved

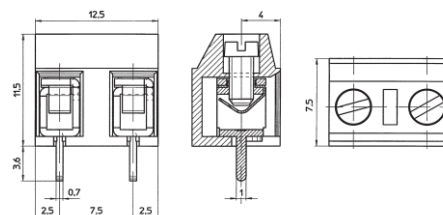
CTB55VK



TYPE NO.	POLES	LENGTH
CTB55VK/2	2	12.5mm

SPECIFICATION

Rating	24A/500V UL=16A/300V, VDE&IMQ=24A/750V
Dielectric strength	≥2kV
Impulse withstand voltage	6kV
Working temperature	110°C
Moulding	UL94-V0 flame retardant PA
Pin/terminal	Tinned, nickel plated brass
Screw/torque	M2.5 steel zinc/colour plated, 0.4Nm
Recommended PCB hole size	ø1.3mm



PCB
TERMINAL
BLOCKS

INTER-
CONNECTION

FUSES &
FUSE-
HOLDERS

LEDs &
INDICATORS

MINIATURE
SWITCHES

LIMIT &
SAFETY
SWITCHES

CONTROL
PRODUCTS

INTERFACE
MODULES &
SUPPORTS

RELAY
BASES

ENCLOSURES

BATTERIES

TRANS-
FORMERS

X-ON Electronics

Largest Supplier of Electrical and Electronic Components

Click to view similar products for [camden manufacturer](#):

Other Similar products are found below :

[412689X](#) [CTBP92VE/12R](#) [CTBP9350/12](#) [IND515205-240-T/GRN](#) [IND515205-240-T/RD](#) [IND5032405-240-T/GRN](#) [CE10.00.EI](#)
[C192SHAND](#) [CNMB/6ST/2](#) [CNMB/4ST/2](#) [CSACST004](#) [CTBP9200/9](#) [CIME/M/BE2250SS](#) [CHH64E1BL](#) [CIM/15W-DMFS](#) [CHHBAT2GY](#)
[CFTBN/2](#) [CCB2S1/04](#) [CHDX6-221C](#) [CHDX8-224](#) [CHDASMP29](#) [CHDASMP34](#) [CHDX810DD](#) [CHDX811DD](#) [CCTTM40LR](#)
[CTBP92VJ/5S](#) [CTBP92VJ/8R](#) [CTSN431/12/M](#) [CTSN433/12/M](#) [CUABOX006](#) [CE10.00.FM](#) [CBRPH-BLK](#) [BIM2003/13-WH/WH](#)
[RX2008/S-5-WH](#) [CBARD-CAR](#) [CRDCG0007](#) [CNMB/4/KIT](#) [CTB5050/5](#) [CTBP92HE/11](#) [CTBP9358/10AO](#) [CHH66C2GY](#) [CHH456PBK](#)
[CHH451ABK](#) [CIM/9W-DMFS](#) [CIM/25W-DMFS](#) [RTM5006/16-NC-BLK](#) [IND5032405-125-T/AMB](#) [CCB1S1/03](#) [CCD2S1/04](#) [CCE1S1/05](#)