

PCB TERMINAL BLOCKS

5mm Pitch Standard Profile Terminal Block

- 2 & 3 pole interlocking
- Test probe facility
- Moulded in black
UL94V-0 PA (GF)
- Wire protector terminals
- UL approved
- Guided pin alignment

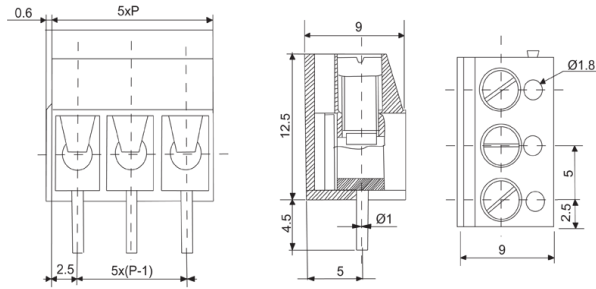
CTB1202



TYPE NO.	POLES	LENGTH
CTB1202/2	2	10mm
CTB1202/3	3	15mm
CTB1202/4	4	20mm
CTB1202/5	5	25mm
CTB1202/6	6	30mm
CTB1202/7	7	35mm
CTB1202/8	8	40mm
CTB1202/9	9	45mm
CTB1202/10	10	50mm
CTB1202/11	11	55mm
CTB1202/12	12	60mm

SPECIFICATION

Rating	300V/10A
Insulation resistance	5000M Ω at 1000V
Operating temperature	-33°C to 120°C
Clamp	Brass/Steel
Withstand Voltage	AC2000V/1min
Recommended PCB hole size	ϕ 1.3mm



10mm Pitch Standard Profile Terminal Block

- 2 & 3 pole interlocking
- Test probe facility
- Moulded in black
UL94V-0 PA (GF)
- Wire protector terminals
- UL approved
- Guided pin alignment

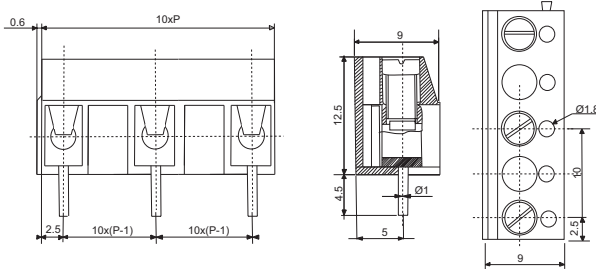
CTB2202



TYPE NO.	POLES	LENGTH
CTB2202/2	2	20mm
CTB2202/3	3	30mm
CTB2202/4	4	40mm
CTB2202/5	5	50mm
CTB2202/6	6	60mm
CTB2202/7	7	70mm
CTB2202/8	8	80mm
CTB2202/9	9	90mm
CTB2202/10	10	100mm
CTB2202/11	11	110mm
CTB2202/12	12	120mm

SPECIFICATION

Rating	250V/16A
Insulation resistance	5000M Ω at 1000V
Operating temperature	-33°C to 120°C
Wire Protector	Stainless Steel
Cable entry	2mm ²
Withstand Voltage	AC2000V/1min
Recommended PCB hole size	ϕ 1.3mm



PCB
TERMINAL
BLOCKS

INTER-
CONNECTION

FUSES &
FUSE-
HOLDERS

LEDs &
INDICATORS

MINIATURE
SWITCHES

LIMIT &
SAFETY
SWITCHES

CONTROL
PRODUCTS

INTERFACE
MODULES &
SUPPORTS

RELAY
BASES

ENCLOSURES

BATTERIES

TRANS-
FORMERS



+44 (0)1638 716101
info@camdenboss.com
www.camdenboss.com

We operate a constant improvement policy,
our products are subject to change without notice.

CAMDENBOSS
ELECTRONICS & ENCLOSURES

NEW

X-ON Electronics

Largest Supplier of Electrical and Electronic Components

Click to view similar products for [camden manufacturer](#):

Other Similar products are found below :

[412689X](#) [CTBP92HE/10](#) [CTBP92VE/12R](#) [CTBP9350/12](#) [IND515205-240-T/GRN](#) [IND515205-240-T/RD](#) [IND5032405-240-T/GRN](#)
[CE10.00.EI](#) [C192SHAND](#) [RTM5006/16-PAT](#) [CNMB/6ST/2](#) [CNMB/4ST/2](#) [CSACST004](#) [CTBP9200/9](#) [CIME/M/BE2250SS](#) [CHH64E1BL](#)
[CIM/15W-DMFS](#) [CHHBAT2GY](#) [CFTBN/2](#) [CCB2S1/04](#) [CHDX6-222C](#) [CHDX8-224](#) [CHDASMP29](#) [CHDASMP34](#) [CHDX810DD](#)
[CHDX811DD](#) [CCTTM40LR](#) [CTBP92VJ/5S](#) [CTBP92VJ/8R](#) [CTSN431/12/M](#) [CTSN433/12/M](#) [CUABOX006](#) [IND513113-LED-RD](#)
[CE10.00.FM](#) [CBRPH-BLK](#) [RX2008/S-5-WH](#) [CBARD-CAR](#) [CRDCG0007](#) [CNMB/4/KIT](#) [CTB5050/5](#) [CTBP92HE/11](#) [CTBP9358/10AO](#)
[CHH66C2GY](#) [CHH456PBK](#) [CHH451ABK](#) [CIM/9W-DMFS](#) [CIM/25W-DMFS](#) [RTM5004/14-NC-BLK](#) [RTM5006/16-NC-BLK](#)
[IND5032405-125-T/AMB](#)