


CAMBLOCK

5mm Pitch Low Profile Terminal Block

PCB
TERMINAL
BLOCKS

- 2-12 pole interlocking
- Moulded in black UL94V-0 PA (GF)
- Wire protector terminals
- Guided pin alignment
- 0.3-2 mm² (22-14 AWG)
-  US approved

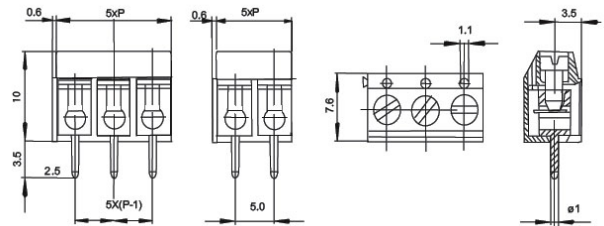
CTB5202




TYPE NO.	POLES	LENGTH
CTB5202/2	2	10mm
CTB5202/3	3	15mm
CTB5202/4	4	20mm
CTB5202/5	5	25mm
CTB5202/6	6	30mm
CTB5202/7	7	35mm
CTB5202/8	8	40mm
CTB5202/9	9	45mm
CTB5202/10	10	50mm
CTB5202/11	11	55mm
CTB5202/12	12	60mm

SPECIFICATION

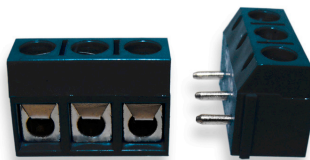
Rating	10A/300V
Insulation resistance	5000M Ω /1000V
Working temperature	-33°C to +120°C
Wire Protector	Stainless Steel
Cable Entry	0.3-2 mm ²
Wire clamp	Nickel plated brass
Withstand Voltage	AC2000V/1min
Recommended PCB hole size	ϕ 1.3mm



5mm Pitch Low Profile 90° Terminal Block

- 2-12 pole interlocking
- Moulded in black UL94V-0 PA (GF)
- Guided pin alignment
- Wire protector terminals
- 0.3-2 mm² (22-14 AWG)
-  US approved

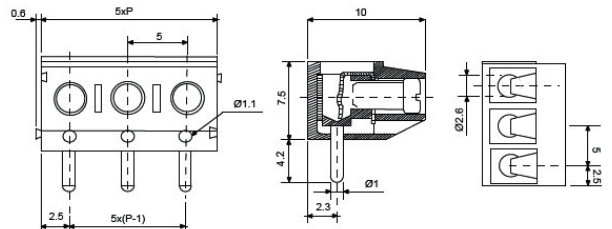
CTB5252



TYPE NO.	POLES	LENGTH
CTB5252/2	2	10mm
CTB5252/3	3	15mm
CTB5252/4	4	20mm
CTB5252/5	5	25mm
CTB5252/6	6	30mm
CTB5252/7	7	35mm
CTB5252/8	8	40mm
CTB5252/9	9	45mm
CTB5252/10	10	50mm
CTB5252/11	11	55mm
CTB5252/12	12	60mm

SPECIFICATION

Rating	10A/300V
Insulation resistance	5000M Ω /1000V
Working temperature	-33°C to +120°C
Wire Protector	Stainless Steel
Cable Entry	0.3-2 mm ²
Wire clamp	Nickel plated brass
Withstand Voltage	AC2000V/1min
Recommended PCB hole size	ϕ 1.3mm



X-ON Electronics

Largest Supplier of Electrical and Electronic Components

Click to view similar products for [camden manufacturer](#):

Other Similar products are found below :

[412689X](#) [CTBP92VE/12R](#) [CTBP9350/12](#) [IND515205-240-T/GRN](#) [IND515205-240-T/RD](#) [IND5032405-240-T/GRN](#) [CE10.00.EI](#)
[C192SHAND](#) [CNMB/6ST/2](#) [CNMB/4ST/2](#) [CSACST004](#) [CTBP9200/9](#) [CIME/M/BE2250SS](#) [CHH64E1BL](#) [CIM/15W-DMFS](#) [CHHBAT2GY](#)
[CFTBN/2](#) [CCB2S1/04](#) [CHDX6-221C](#) [CHDX8-224](#) [CHDASMP29](#) [CHDASMP34](#) [CHDX810DD](#) [CHDX811DD](#) [CCTTM40LR](#)
[CTBP92VJ/5S](#) [CTBP92VJ/8R](#) [CTSN431/12/M](#) [CTSN433/12/M](#) [CUABOX006](#) [CE10.00.FM](#) [CBRPH-BLK](#) [BIM2003/13-WH/WH](#)
[RX2008/S-5-WH](#) [CBARD-CAR](#) [CRDCG0007](#) [CNMB/4/KIT](#) [CTB5050/5](#) [CTBP92HE/11](#) [CTBP9358/10AO](#) [CHH66C2GY](#) [CHH456PBK](#)
[CHH451ABK](#) [CIM/9W-DMFS](#) [CIM/25W-DMFS](#) [RTM5006/16-NC-BLK](#) [IND5032405-125-T/AMB](#) [CCB1S1/03](#) [CCD2S1/04](#) [CCE1S1/05](#)