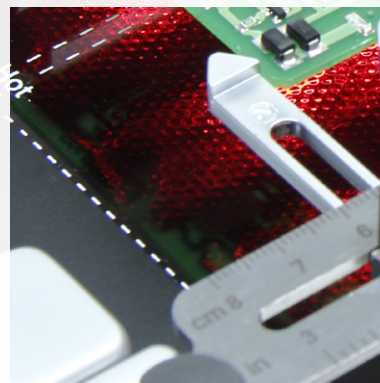
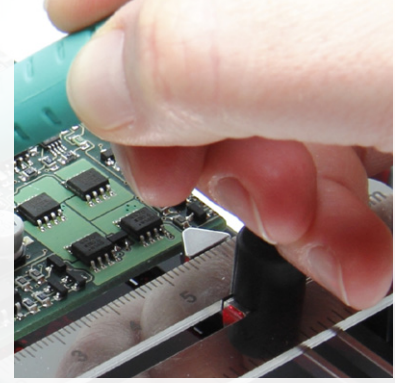
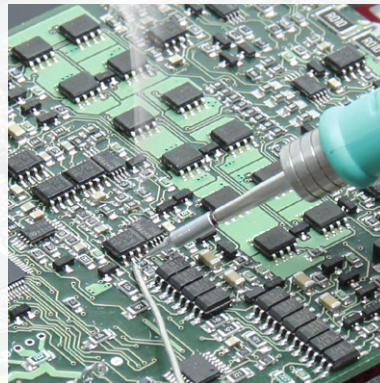
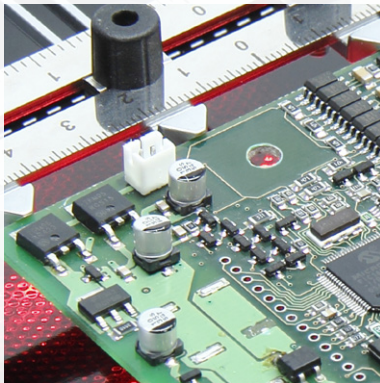
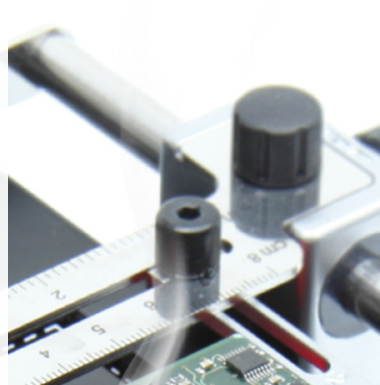


JBC

www.jbctools.com



IR Preheater system

Save time
and increase
production

Save time

The PH allows faster completion of soldering jobs by heating PCBs.

Lower tip temperature

The PH means you can work with lower tip temperatures. This increases tip life.

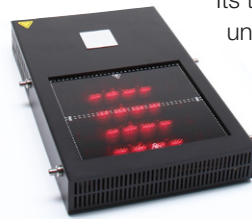
Avoid thermal stress

The PH reduces risk of thermal stress on components and PCBs.

IR Preheater system

Infrared is the most advanced, efficient and cost-effective method to preheat PCBs in any soldering or rework job

Heater Unit



Its technology provides fast response, high heating rates and uniform heating to ensure the best results.

The low thermal mass of the Preheater's IR lamps gives outstanding control of the heat and the process temperature.

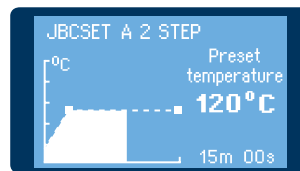
Console

Easy process monitoring and parameter managing.



Profiles by temperature

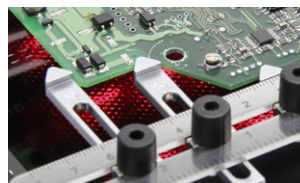
JBC offers you 3 predefined profiles (JBCset) and 20 profiles ready for you to personalize (User profiles).



No thermocouple needed

Once a profile has been run to the end, you can run it without connecting the thermocouple.

PCB Support



The unique clamping system and the 3 levels of height adjustment make this PCB Support a safe and efficient solution. It suits any PCB and type of work, either soldering or rework.

Technical Specifications

Dimensions	173 x 282 x 41 mm	Temperature Range	50 - 250 °C / 120 - 482 °F
Weight	4,9 kg (10.8 lb)	JBCset Temperature Profiles	3 profiles (2, 3 or 4 steps)
Voltage	PH-1B 120V, 50 / 60Hz (factory set) PH-2B 230V, 50 / 60Hz (factory set) PH-9B 100V, 50 / 60Hz (factory set)	User Temperature Profiles	Up to 20 (6 steps for each)
		Maximum working time	600 min. or indefinite
Fuses	Overload protection PH-1B 120V / PH-9B 100V: 8 A PH-2B 230V: 4 A	Temperature Measurement	Thermocouple type K
Maximum Power	500 VA	Heating Area	65 x 135 (1 zone) 130 x 135 mm (2 zones)

PH-B IR Preheater

Ref. **PH-1B** 120 V, **PH-2B** 230 V, **PH-9B** 100 V

The elementary solution for PCB preheating by applying infrared heat

Included Heater Unit
Console

Heater Unit

- Quick heating up
- Select 2 independent heating areas or "all zones"

Pedal socket connection
(optional)

Console

Monitor and manage parameters

Fixing brackets for
PH321 PCB Support



PH321 PCB Support

Versatile and adjustable support to suit any size and shape of PCB

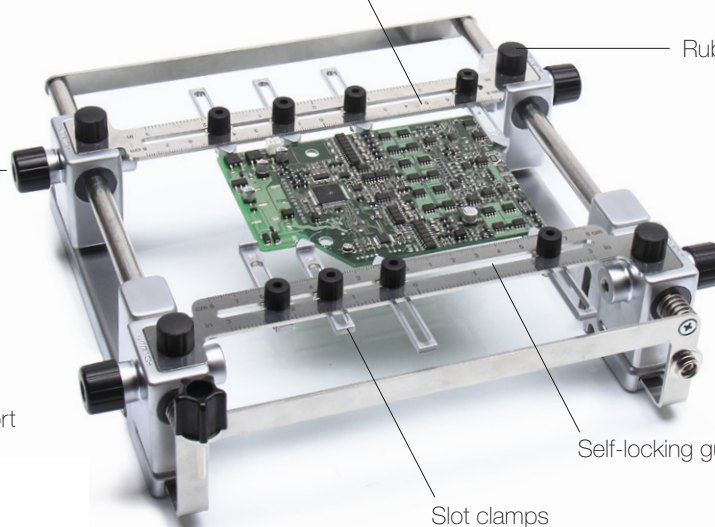
3 Height adjustment

The PCB Support allows adjusting for 3 heights between the board and the heating area.

Sliding guide

Rubber caps

Sliding clamp knobs

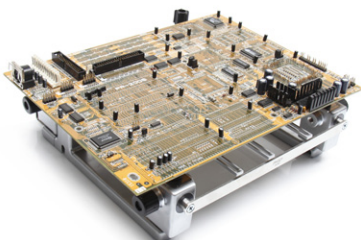


Reworking large PCBs

It's possible to use the PH321 PCB support to rework large PCBs.

Self-locking guide

Slot clamps



Heating the same area

Use the slot clamps to properly position PCBs of the same batch so as to always heat the same area. This means you save time and optimize workflow.

X-ON Electronics

Largest Supplier of Electrical and Electronic Components

Click to view similar products for [DC Fans](#) category:

Click to view products by [JBC Tools](#) manufacturer:

Other Similar products are found below :

[614R](#) [6424/2HP-210](#) [8312R](#) [DV4118/2NP-183](#) [AFB0948HH-S687](#) [PFB0824DHE-8B72](#) [G2E085-AA05-10](#) [RD20S-4/210660](#) [4318/12T](#)
[4418HH](#) [AUB0912H-F00](#) [3412N/2ME](#) [K2E225-RA92-09](#) [4184N/2XR](#) [5214N2HH](#) [614J2HHPR-010](#) [8412NGL-12](#) [4114N/12HHR-297](#)
[4656](#) [ZWR-903](#) [4112N12GL-175](#) [KD2406PKB2.\(2\).GN](#) [AFB1248HHE](#) [AFB1212LE-F00](#) [FAN-SCH-1](#) [MF60151V1-1000U-G99](#)
[PF80252V1-1000U-G99](#) [PF92252V1-1000U-G99](#) [4112N/2H6P](#) [4114N/17-251](#) [6212NH](#) [622/2N](#) [712F-011](#) [8218J/2NP-181](#) [W1G180-AB47-](#)
[15](#) [FAA1-12038NBKW31-A](#) [6318N/2TDP](#) [6318N/2H3PU](#) [6318HU](#) [424JMU](#) [PMD1206PTVX-A.U.GN](#) [PF80251B2-000U-F99](#)
[EF40101BX-1000U-G99](#) [AD1224LB-A71GL](#) [9GA0924L4021](#) [9GA0924M4021](#) [9GA0924M4011](#) [9GA0824B20011](#) [9GA0812A2D0011](#)
[9GA0912M4D011](#) [9GA0924W4D01](#)