


CAMBLOCK PLUS

5mm Pitch Pluggable Rising Clamp Terminal Blocks

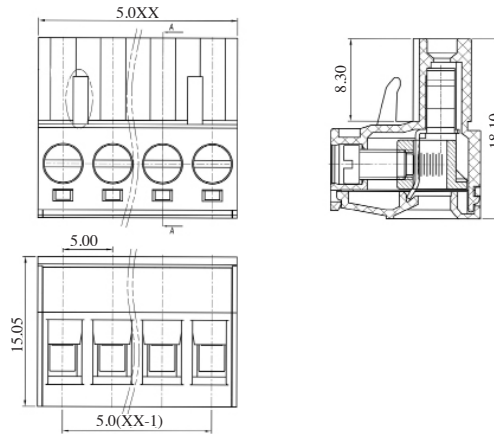
- 2-12 pole solid block
- Pluggable male-female connectors
- Open & closed headers
- Horizontal & vertical female plug styles
- Polarised mouldings
- Moulded in green UL94-V0 flame retardant PA66
- Professional rising clamp terminals
- 1.5mm² (28-14AWG) solid & stranded cable
- Anti solder wicking
- Captive screws
- Guided pin alignment
-  approved

SPECIFICATION

Rating	15A/300V
Insulation resistance	500MΩ/500V
Withstand Voltage	AC2000V/1min
Contact Resistance	20mΩ (max)
Working Temperature	-40°C to 105+°C
Mouldings	UL94-V0 Flame retardant PA66
Pin/Terminal	Tin plated brass
Rising Clamp	Brass, nickel plated
Screw/Torque	M3 Steel, zinc plated 0.5Nm
Recommended PCB hole size	ø1.7mm

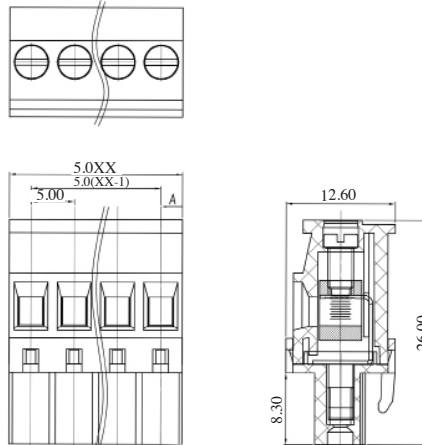
Female connector

TYPE NO.	POLES	LENGTH	CTBP9200
CTBP9200/2	2	10mm	
CTBP9200/3	3	15mm	
CTBP9200/4	4	20mm	
CTBP9200/5	5	25mm	
CTBP9200/6	6	30mm	
CTBP9200/7	7	35mm	
CTBP9200/8	8	40mm	
CTBP9200/9	9	45mm	
CTBP9200/10	10	50mm	
CTBP9200/11	11	55mm	
CTBP9200/12	12	60mm	



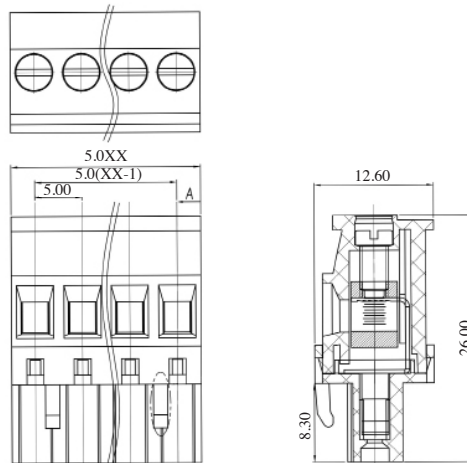
Female connector vertical (standard)

TYPE NO.	POLES	LENGTH	CTBP92VG/S
CTBP92VG/2S	2	10mm	
CTBP92VG/3S	3	15mm	
CTBP92VG/4S	4	20mm	
CTBP92VG/5S	5	25mm	
CTBP92VG/6S	6	30mm	
CTBP92VG/7S	7	35mm	
CTBP92VG/8S	8	40mm	
CTBP92VG/9S	9	45mm	
CTBP92VG/10S	10	50mm	
CTBP92VG/11S	11	55mm	
CTBP92VG/12S	12	60mm	



Female connector vertical (reversed)

TYPE NO.	POLES	LENGTH	CTBP92VG/R
CTBP92VG/2R	2	10mm	
CTBP92VG/3R	3	15mm	
CTBP92VG/4R	4	20mm	
CTBP92VG/5R	5	25mm	
CTBP92VG/6R	6	30mm	
CTBP92VG/7R	7	35mm	
CTBP92VG/8R	8	40mm	
CTBP92VG/9R	9	45mm	
CTBP92VG/10R	10	50mm	
CTBP92VG/11R	11	55mm	
CTBP92VG/12R	12	60mm	



X-ON Electronics

Largest Supplier of Electrical and Electronic Components

Click to view similar products for [camden manufacturer](#):

Other Similar products are found below :

[412689X](#) [CTBP92VE/12R](#) [CTBP9350/12](#) [IND515205-240-T/GRN](#) [IND515205-240-T/RD](#) [IND5032405-240-T/GRN](#) [CE10.00.EI](#)
[C192SHAND](#) [CNMB/6ST/2](#) [CNMB/4ST/2](#) [CSACST004](#) [CTBP9200/9](#) [CIME/M/BE2250SS](#) [CHH64E1BL](#) [CIM/15W-DMFS](#) [CHHBAT2GY](#)
[CFTBN/2](#) [CCB2S1/04](#) [CHDX6-221C](#) [CHDX8-224](#) [CHDASMP29](#) [CHDASMP34](#) [CHDX810DD](#) [CHDX811DD](#) [CCTTM40LR](#)
[CTBP92VJ/5S](#) [CTBP92VJ/8R](#) [CTSN431/12/M](#) [CTSN433/12/M](#) [CUABOX006](#) [CE10.00.FM](#) [CBRPH-BLK](#) [BIM2003/13-WH/WH](#)
[RX2008/S-5-WH](#) [CBARD-CAR](#) [CRDCG0007](#) [CNMB/4/KIT](#) [CTB5050/5](#) [CTBP92HE/11](#) [CTBP9358/10AO](#) [CHH66C2GY](#) [CHH456PBK](#)
[CHH451ABK](#) [CIM/9W-DMFS](#) [CIM/25W-DMFS](#) [RTM5006/16-NC-BLK](#) [IND5032405-125-T/AMB](#) [CCB1S1/03](#) [CCD2S1/04](#) [CCE1S1/05](#)