

IEC Appliance Inlet C20 with Filter, ECO design, front or rear side Mounting



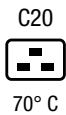
Screw-on or rivet mounting from front or rear side  
Screw-on Version



Screw-on mounting from rear side, integrated thread  
Screw-on Version



Snap-in mounting from front side  
Snap-in version



Approvals and Compliances

Description

- Panel Mount :  
Screw-on version from front or rear side, snap-in version from front side
- 2 Functions :  
Appliance Inlet Protection class I , Line filter in standard and medical version
- Quick connect terminals

Unique Selling Proposition

- ECO design
- Metal flange for optimal shielding
- Compact design
- V-Lock cord retaining

Characteristics

- Optimal shielding due to completely closed filter case, unpotted  
Suitable for assembly in metal plated plastic housings
- Version with class X1 and X2 (standard version) capacitors
- Universal line filter for standard applications
- Suitable for use in equipment according to IEC/UL 60950  
Suitable for use in medical equipment according to IEC/UL 60601-1

Other versions on request

- Solder terminals
- Medical version M80
- Capacity CX 330 nF

References

Fits to type: 4790; 4795 0104; 0104U; 1651; 1652; 1654; 4790; 4795; VAC19KS

Alternative: version without line filter 4793; 4798

Weblinks

[pdf datasheet](#), [html-datasheet](#), [General Product Information](#), [Distributor-Stock-Check](#), [Accessories](#), [Detailed request for product](#), [Microsite](#)

Newly available variants corresponding to V-Lock mating cordset. The connector is equipped with a notch intended for use with the latching cordset. The cord latching system prevents against accidental removal of the cordset.

Technical Data

|                                 |   |                         |  |
|---------------------------------|---|-------------------------|--|
| Ratings IEC                     | 16A @ Ta 40 °C / 250VAC; 50Hz   | appliance inlet/-outlet | C20 acc. to IEC 60320-1, UL 498, CSA C22.2 no. 42 (for cold conditions) pin-temperature 70 °C, 16A, Protection Class I |
| Ratings UL/CSA                  | 20A @ Ta 40 °C / 250VAC; 60Hz   | Line Filter             | Standard and Medical Version, IEC 60939, UL 1283, CSA C22.2 no. 8 <a href="#">Technical Details</a>                    |
| Leakage Current                 | standard < 0.5 mA (250 V / 60 Hz)<br>medical < 5 µA (250 V / 60 Hz)   | MTBF                    | > 3'000'000h acc. to MIL-HB-217 F  |
| Dielectric Strength             | > 1.7 kVDC between L-N<br>> 2.7 kVDC between L/N-PE<br>Test voltage (2 sec)                                   |                         |  |
| Impulse Withstand Voltage       | > 2.5kV between L-N (CX2)<br>> 4 kV between L-N (CX1)<br>> 5 kV between L/N-PE (Cy2)<br>voltage (1.2/50 µs)   |                         |  |
| Allowable Operation Temperature | -25 °C to 85 °C   |                         |  |
| Climatic Category               | 25/085/21 acc. to IEC 60068-1   |                         |  |
| IP-Protection                   | from front side IP 40 acc. to IEC 60529   |                         |  |
| Protection Class                | Suitable for appliances with protection class I acc. to IEC 61140   |                         |  |
| Terminal                        | Quick connect terminal 6.3 x 0.8 mm   |                         |  |
| Panel Thickness S               | Screw: max 8 mm<br>Mounting screw torque max 0.5Nm<br>Snap-in: 0.8 mm to 3 mm<br>(all steps with one variant) |                         |  |
| Material: Housing               | Themoplast / steel tin-plated, black / metallic, UL 94V-0   |                         |  |



Approvals and Compliances

Detailed information on product approvals, code requirements, usage instructions and detailed test conditions can be looked up in [Details about Approvals](#)

## Approvals









The approval mark is used by the testing authorities to certify compliance with the safety requirements placed on electronic products.

Approval Reference Type: 5130

| Approval Logo  | Certificates                  | Certification Body | Description                |
|--|-------------------------------|--------------------|----------------------------|
|  | <a href="#">VDE Approvals</a> | VDE                | Certificate Number: 104884 |
|  | <a href="#">UL Approvals</a>  | UL                 | UL File Number: E72928     |



## Product standards

Product standards that are referenced

| Organization   | Design                | Standard         | Description   |
|--|-----------------------|------------------|---|
|    | Designed according to | IEC 60320-1      | Appliance couplers for household and similar general purposes         |
|    | Designed according to | IEC 60939        | Passive filters for suppressing electromagnetic interference          |
|    | Designed according to | IEC 60127-6      | Miniature fuses. Part 6. Fuse-holders for miniature fuse-links        |
|    | Designed according to | IEC 61058-1      | Switches for appliances. Part 1. General requirements                 |
|    | Designed according to | UL 498           | Standard for Attachment Plugs and Receptacles                         |
|    | Designed according to | UL 1283          | Electromagnetic interference filters                                  |
|  | Designed according to | CSA C22.2 no. 42 | General Use Receptacles, Attachment Plugs, and Similar Wiring Devices |
|  | Designed according to | CSA C22.2 no. 8  | Electromagnetic interference (EMI) filters                            |







## Application standards

Application standards where the product can be used

| Organization   | Design                         | Standard     | Description  |
|--|--------------------------------|--------------|--|
|  | Designed for applications acc. | IEC/UL 60950 | IEC 60950-1 includes the basic requirements for the safety of information technology equipment.        |
|  | Designed for applications acc. | IEC 60601-1  | Medical electrical equipment - Part 1: General requirements for basic safety and essential performance |

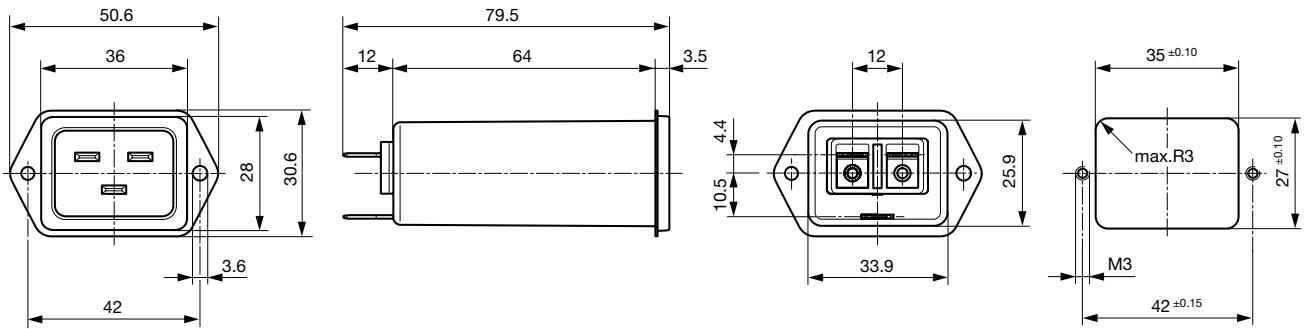
## Compliances

The product complies with following Guide Lines

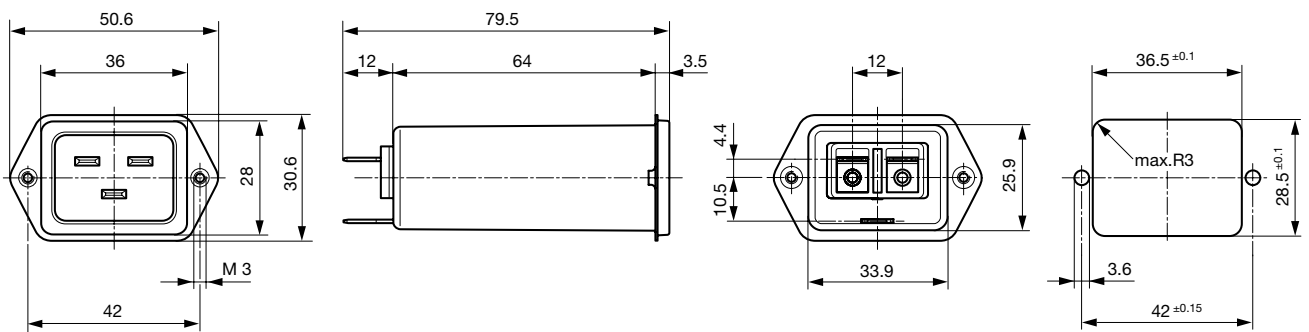
| Identification   | Details                                      | Initiator   | Description  |
|--|--|-------------|--|
|  | <a href="#">CE declaration of conformity</a> | SCHURTER AG | The CE marking declares that the product complies with the applicable requirements laid down in the harmonisation of Community legislation on its affixing in accordance with EU Regulation 765/2008.                        |
|  | <a href="#">RoHS</a>                         | SCHURTER AG | EU Directive RoHS 2011/65/EU   |
|  | <a href="#">China RoHS</a>                   | SCHURTER AG | The law SJ / T 11363-2006 (China RoHS) has been in force since 1 March 2007. It is similar to the EU directive RoHS.   |
|  | <a href="#">REACH</a>                        | SCHURTER AG | On 1 June 2007, Regulation (EC) No 1907/2006 on the Registration, Evaluation, Authorization and Restriction of Chemicals 1 (abbreviated as "REACH") entered into force.  |
|  | <a href="#">MicrositeV-Lock</a>              | SCHURTER AG | V-Lock system are based on a matching plug-dose combination. The connector is equipped with a notch intended for use with the latching cordset. The cord latching system prevents against accidental removal of the cordset. |
|  | <a href="#">Medical Equipment</a>            | SCHURTER AG | Suitable for use in medical equipment according to IEC/UL 60601-1  |

**Dimension [mm]**

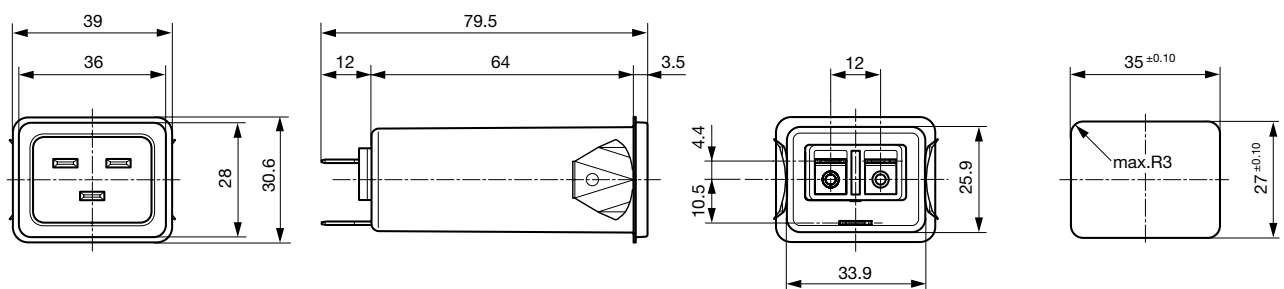
Front or rear side mounting for screws with nuts or blind rivets



Rear side mounting with pre-formed, threaded holes for M3 screws



Snap-in mounting from front side

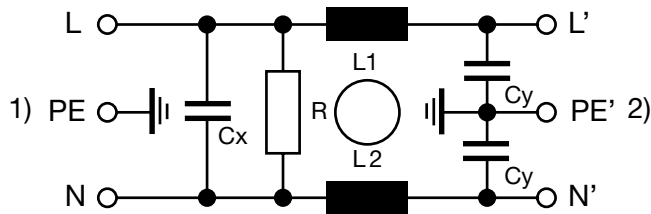


**Technical Data of Filter-Components**

| Rated Current [A] | Filter-Type          | Inductances L [mH] | Capacitance CX [nF] | Capacitance CY [nF] | R [MΩ] |
|-------------------|----------------------|--------------------|---------------------|---------------------|--------|
| 16                | Standard Version     | 2 x 0.6            | 100                 | 2.2                 | 1      |
| 20                | Standard Version     | 2 x 0.3            | 100                 | 2.2                 | 1      |
| 16                | Medical Version (M5) | 2 x 0.6            | 100                 | -                   | 1      |
| 20                | Medical Version (M5) | 2 x 0.3            | 100                 | -                   | 1      |

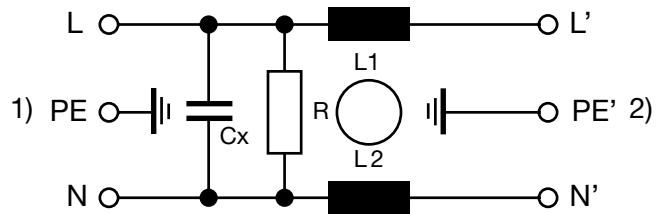
**Diagrams**

Standard or medical version (M80)



1) Line  
2) Load

Medical version (M5)



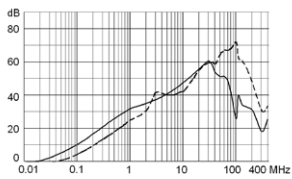
1) Line  
2) Load

**Attenuation Loss**

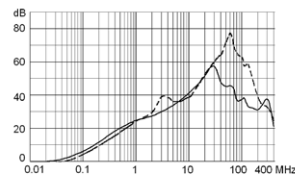
--- 50Ω differential mode \_\_\_\_ 50Ω common mode

Standard version

16 A

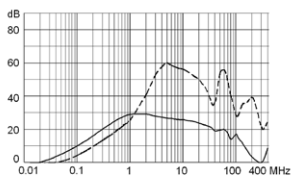


20 A

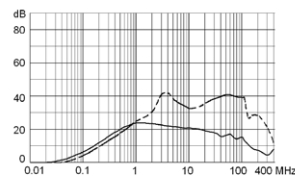


Medical version (M5)

16 A



20 A



**All Variants**

| Rated Current IEC [A] | Rated Current UL [A] | Filter-Type      | Panel mounting | Mounting side | Terminal                             | Capacitor | V-Lock | Order Number |
|-----------------------|----------------------|------------------|----------------|---------------|--------------------------------------|-----------|--------|--------------|
| 16                    | 16                   | Standard Version | Snap-in        | Front Side    | Quick connect terminals 6.3 x 0.8 mm | X2 100nF  |        | 5130.2000    |
| 16                    | 20                   | Standard Version | Snap-in        | Front Side    | Quick connect terminals 6.3 x 0.8 mm | X2 100nF  |        | 5130.2001    |
| 16                    | 16                   | Standard Version | Snap-in        | Front Side    | Quick connect terminals 6.3 x 0.8 mm | X1 100nF  |        | 5130.2100    |
| 16                    | 20                   | Standard Version | Snap-in        | Front Side    | Quick connect terminals 6.3 x 0.8 mm | X1 100nF  |        | 5130.2101    |
| 16                    | 16                   | Standard Version | Screw-on/Rivet | Front Side    | Quick connect terminals 6.3 x 0.8 mm | X2 100nF  |        | 5130.0000    |
| 16                    | 16                   | Standard Version | Screw-on/Rivet | Front Side    | Quick connect terminals 6.3 x 0.8 mm | X2 100nF  | ●      | 5130.0000.21 |

| Rated Current IEC [A] | Rated Current UL [A] | Filter-Type          | Panel mounting | Mounting side | Terminal                             | Capacitor | V-Lock | Order Number |
|-----------------------|----------------------|----------------------|----------------|---------------|--------------------------------------|-----------|--------|--------------|
| 16                    | 20                   | Standard Version     | Screw-on/Rivet | Front Side    | Quick connect terminals 6.3 x 0.8 mm | X2 100nF  |        | 5130.0001    |
| 16                    | 16                   | Standard Version     | Screw-on/Rivet | Front Side    | Quick connect terminals 6.3 x 0.8 mm | X1 100nF  |        | 5130.0100    |
| 16                    | 20                   | Standard Version     | Screw-on/Rivet | Front Side    | Quick connect terminals 6.3 x 0.8 mm | X1 100nF  |        | 5130.0101    |
| 16                    | 16                   | Standard Version     | Screw          | Rear Side     | Quick connect terminals 6.3 x 0.8 mm | X2 100nF  |        | 5130.1000    |
| 16                    | 20                   | Standard Version     | Screw          | Rear Side     | Quick connect terminals 6.3 x 0.8 mm | X2 100nF  |        | 5130.1001    |
| 16                    | 16                   | Standard Version     | Screw          | Rear Side     | Quick connect terminals 6.3 x 0.8 mm | X1 100nF  |        | 5130.1100    |
| 16                    | 20                   | Standard Version     | Screw          | Rear Side     | Quick connect terminals 6.3 x 0.8 mm | X1 100nF  |        | 5130.1101    |
| 16                    | 20                   | Medical Version (M5) | Snap-in        | Front Side    | Quick connect terminals              | X1 100nF  |        | 5130.2301    |
| 16                    | 16                   | Medical Version (M5) | Snap-in        | Front Side    | Quick connect terminals 6.3 x 0.8 mm | X2 100nF  |        | 5130.2200    |
| 16                    | 20                   | Medical Version (M5) | Snap-in        | Front Side    | Quick connect terminals 6.3 x 0.8 mm | X2 100nF  |        | 5130.2201    |
| 16                    | 16                   | Medical Version (M5) | Snap-in        | Front Side    | Quick connect terminals 6.3 x 0.8 mm | X1 100nF  |        | 5130.2300    |
| 16                    | 16                   | Medical Version (M5) | Screw-on/Rivet | Front Side    | Quick connect terminals 6.3 x 0.8 mm | X2 100nF  |        | 5130.0200    |
| 16                    | 20                   | Medical Version (M5) | Screw-on/Rivet | Front Side    | Quick connect terminals 6.3 x 0.8 mm | X2 100nF  |        | 5130.0201    |
| 16                    | 16                   | Medical Version (M5) | Screw-on/Rivet | Front Side    | Quick connect terminals 6.3 x 0.8 mm | X1 100nF  |        | 5130.0300    |
| 16                    | 16                   | Medical Version (M5) | Screw-on/Rivet | Front Side    | Quick connect terminals 6.3 x 0.8 mm | X1 100nF  | ●      | 5130.0300.21 |
| 16                    | 20                   | Medical Version (M5) | Screw-on/Rivet | Front Side    | Quick connect terminals 6.3 x 0.8 mm | X1 100nF  |        | 5130.0301    |
| 16                    | 16                   | Medical Version (M5) | Screw          | Rear Side     | Quick connect terminals 6.3 x 0.8 mm | X2 100nF  |        | 5130.1200    |
| 16                    | 20                   | Medical Version (M5) | Screw          | Rear Side     | Quick connect terminals 6.3 x 0.8 mm | X2 100nF  |        | 5130.1201    |
| 16                    | 16                   | Medical Version (M5) | Screw          | Rear Side     | Quick connect terminals 6.3 x 0.8 mm | X1 100nF  |        | 5130.1300    |
| 16                    | 20                   | Medical Version (M5) | Screw          | Rear Side     | Quick connect terminals 6.3 x 0.8 mm | X1 100nF  |        | 5130.1301    |

Most Popular.

Availability for all products can be searched real-time: <https://www.schurter.com/en/Stock-Check/Stock-Check-SCHURTER>

Type for screw on mounting from rear side has pre-threaded holes for M3 screws

**Packaging unit** 20 Pcs

Accessories

Description



[Wire Harness](#)  
 Wire harness for SCHURTER products



[Assorted Covers](#)  
 Rear Cover

0859.0047



[Cord retaining kits](#)  
 Cord retaining strain relief

Flat head, L

4700.0011

Mating Inlets/Plugs

Category / Description



[Connector Overview complete](#)

IEC Connector C19, Rewireable, Straight

4795

IEC Connector C19, Rewireable, Angled

4790

[Connector further types to 5130](#)

Mating Outlets/Connectors



[Connector Overview complete](#)

IEC Connector C19, Rewireable, Straight

4795

IEC Connector C19, Rewireable, Angled

4790

IEC Connector C19, Rewireable, Straight

0104U

[Connector further types to 5130](#)

Mating Outlets/Connectors shuttered



Power Cord Overview complete

Overview Power Cord with IEC Appliance Connector C19, V-Lock, straight

VAC19KS

Power Cord further types to 5130

## X-ON Electronics

Largest Supplier of Electrical and Electronic Components

*Click to view similar products for [AC Power Entry Modules](#) category:*

*Click to view products by [Schurter](#) manufacturer:*

Other Similar products are found below :

[0098.0050](#) [6-1609987-9](#) [6167.0002](#) [7-6609955-2](#) [FN389-4-22](#) [FN9233ER-12-06](#) [FN9233S1-10-06](#) [FN9233S1-8-06](#) [FN9233S1B-8-06](#)  
[FN9233S1R-1-06](#) [FN9233S1R-12-06](#) [FN9233SB-1-06](#) [FN9233SB-12-06](#) [FN9233SB-8-06](#) [FN9233SR-10-06](#) [FN9233SR-3-06](#) [FN9244B-15-06](#)  
[HI](#) [FN9244EB-3-06](#) [FN9244EB-8-06](#) [FN9244ER-15-06](#) [FN9244ER-8-06](#) [FN9244ES1-8-06](#) [FN9244ESB-8-06](#) [FN9244EU-6-06](#)  
[FN9244R-12-06](#) [FN9244R-3-07](#) [FN9244R-8-06](#) [FN9244S1-10-06](#) [FN9244S1-12-06](#) [FN9244S1-3-06](#) [FN9244S1B-6-06](#) [FN9244S1R-3-06](#)  
[FN9244S-6-06](#) [FN9244SB-10-06](#) [FN9244SB-6-06](#) [FN9244SB-8-06](#) [FN9244SR-10-06](#) [FN9244SR-6-06](#) [FN9244U-3-06](#) [FN9244U-8-06](#)  
[FN9260A-6-06](#) [PE00SSSXB](#) [Fuse-H-EUR-1](#) [Fuse-H-USA-1](#) [PM00XD000](#) [PS0SSDBX0](#) [PS0SXSH3B](#) [A-0701-HT-H](#) [RAPC3FG](#) [15EJMS8](#)