

RASPBERRY PI STYLE ENCLOSURES

Wolfson Pi Audio Enclosure and Raspberry Pi Style Enclosures

No screws – just add your *Raspberry Pi* filling!

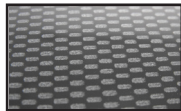
- Designed to house the *Raspberry Pi & Wolfson Audio Card* via clip-in grooves - **NO SCREWS REQUIRED!**
- All cut-outs and knock-outs are pre-cut into the case
- Pre-defined microphone sensor slots
- Supplied with four rubber feet
- Supplied with LED light pipes
- High **Gloss Finish**
- Pi Camera slots can be opened with a flat headed screwdriver
- Pi Camera mount knockout can be opened with a screwdriver



Raspberry Pi and Wolfson Audio Card assemblies not included

Material:

- Thickness 3mm: HB Rated
- Carbon Fibre Finish: Acrylic Capped ABS
- Light Pipes: Transparent Acrylic



Carbon Fibre

CB PART NO.	COLOURS
CBDBWA-CAR	Carbon Fibre

* Carbon fibre finish:Acrylic capped ABS

Light Pipe Assembly

1. Place your Wolfson Pi audio top onto a steady surface.
2. Peel off the protective film on the light pipes.
3. Apply two drops of glue into the larger recess and one drop of glue into the smaller recess (We recommend using Farnell's Permabond C203 Super Glue)
4. Ensuring that the light pipes are in the correct orientation as shown, place into the recess and hold for five seconds ensuring that the light pipes are perpendicular to the enclosure top.

X-ON Electronics

Largest Supplier of Electrical and Electronic Components

Click to view similar products for [camden manufacturer](#):

Other Similar products are found below :

[412689X](#) [CTBP92HE/10](#) [CTBP92VE/12R](#) [CTBP9350/12](#) [IND515205-240-T/GRN](#) [IND515205-240-T/RD](#) [IND5032405-240-T/GRN](#)
[CE10.00.EI](#) [C192SHAND](#) [RTM5006/16-PAT](#) [CNMB/6ST/2](#) [CNMB/4ST/2](#) [CSACST004](#) [CTBP9200/9](#) [CIME/M/BE2250SS](#) [CHH64E1BL](#)
[CIM/15W-DMFS](#) [CHHBAT2GY](#) [CFTBN/2](#) [CCB2S1/04](#) [CHDX6-222C](#) [CHDX8-224](#) [CHDASMP29](#) [CHDASMP34](#) [CHDX810DD](#)
[CHDX811DD](#) [CCTTM40LR](#) [CTBP92VJ/5S](#) [CTBP92VJ/8R](#) [CTSN431/12/M](#) [CTSN433/12/M](#) [CUABOX006](#) [IND513113-LED-RD](#)
[CE10.00.FM](#) [CBRPH-BLK](#) [RX2008/S-5-WH](#) [CBARD-CAR](#) [CRDCG0007](#) [CNMB/4/KIT](#) [CTB5050/5](#) [CTBP92HE/11](#) [CTBP9358/10AO](#)
[CHH66C2GY](#) [CHH456PBK](#) [CHH451ABK](#) [CIM/9W-DMFS](#) [CIM/25W-DMFS](#) [RTM5004/14-NC-BLK](#) [RTM5006/16-NC-BLK](#)
[IND5032405-125-T/AMB](#)