

IEC Appliance Inlet C14 with Filter, Circuit Breaker TA45

Standard- or Medical-Filter



V-Lock

C14

 70° C

**Description**

- Panel Mount:
Screw-on mounting from front side
- 3 Functions:
Appliance Inlet Protection class I, circuit breaker type TA45 2-pole, Line filter in standard and medical version
- Quick connect terminals 6.3 x 0.8 mm

Approvals

- VDE Certificate Number: 117118
- UL File Number: E72928

Characteristics

- All single elements are already wired
Unwired versions available on request
- Line switch non-illuminated or illuminated
Thermal overload protection
Optional with undervoltage- or remote trip release
- Qualified for use in equipment according IEC/EN 60950

References

Alternative: version without line filter [6145](#)
 We recommend for new applications the new type [DF12](#)

Weblinks

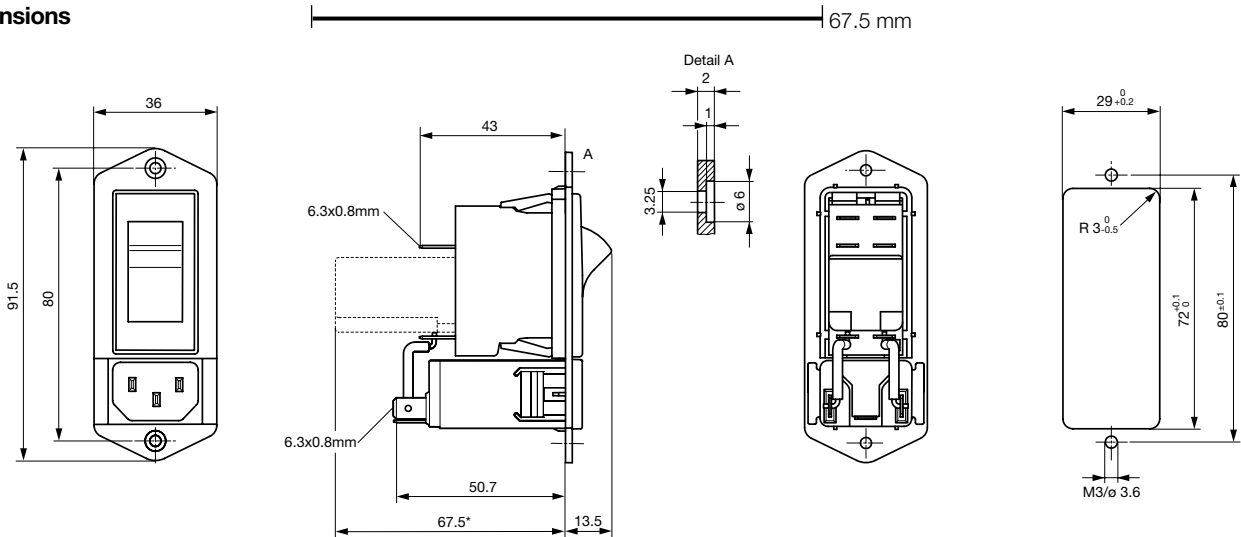
[pdf](#), [General Product Information](#), [Approvals](#), [RoHS](#), [CHINA-RoHS](#), [Mating Connectors](#), [e-Store](#), [SCHURTER-Stock-Check](#), [Distributor-Stock-Check](#), [Accessories](#)

Newly available variants corresponding to V-Lock mating cordset. The connector is equipped with a notch intended for use with the latching cordset. The cord latching system prevents against accidental removal of the cordset.

Technical Data

| | | | |
|---------------------------|---|-------------------------|--|
| Ratings IEC | 1 - 10A @ Ta 40 °C / 250VAC; 50Hz | Appliance-Inlet/-Outlet | C14 acc. to IEC/EN 60320-1, UL 498, CSA C22.2 no. 42 (for cold conditions) pin-temperature 70 °C, 10A, Protection Class 1 |
| Ratings UL/CSA | 1 - 15A @ Ta 40 °C / 125VAC; 60Hz | Circuit Breakers | Acc. IEC/EN 60934, UL 1077, CSA 22.2 no. 235 2-pole rocker switch, illuminated or non-illuminated. Optional with undervoltage- or remote trip release Short circuit capacity Icn: at In < 3A/240VAC : 10 x In at In ≥ 3A/240VAC : 300A |
| Leakage Current | standard < 0.5mA (250V / 60Hz) medical < 5 µA (250 V / 60 Hz) | Line Switch | Rocker switch 2-pole non-illuminated or illuminated acc. to IEC 61058-1 Technical details |
| Dielectric Strength | > 1.7kVDC between L-N > 2.7kVDC between L/N-PE Test voltage (2 sec) | Line Filter | Standard and Medical Version, IEC 60939, IEC 60601-1, UL 1283, UL 544, EN 133 200, CSA C22.2 no. 8 Technical details |
| Allowable Operation Temp. | -10 °C to 55 °C | MTBF | > 100'000h acc. to MIL-HB-217 F |
| Climatic Category | 10/055/21 acc. to IEC 60068-1 | | |
| Degree of Protection | from front side IP 40 acc. to IEC 60529 | | |
| Protection Class | Suitable for appliances with protection class 1 acc. to IEC 61140 | | |
| Terminal | Quick connect terminals 6.3 x 0.8 mm | | |
| Panel Thickness s | Screw: max 8 mm Mounting screw torque max 0.5Nm | | |
| Material: Housing | Thermoplastic, black, UL 94V-0 | | |

Dimensions



* --- Version TA45 with undervoltage release

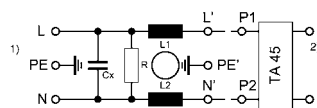
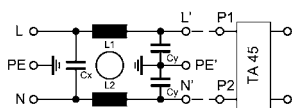
Technical Data of Filter-Components

| Rated Current [A] | Filter-Type | Inductances | Capacitance | Capacitance | R [MΩ] |
|-------------------|----------------------|-------------|-------------|-------------|--------|
| | | L [mH] | CX [nF] | CY [nF] | |
| 1 | Standard Version | 2 x 11 | 47 | 2.2 | - |
| 2 | Standard Version | 2 x 4 | 47 | 2.2 | - |
| 3 | Standard Version | 2 x 2.5 | 47 | 2.2 | - |
| 4 | Standard Version | 2 x 1.6 | 47 | 2.2 | - |
| 6 | Standard Version | 2 x 0.7 | 47 | 2.2 | - |
| 8 | Standard Version | 2 x 0.6 | 47 | 2.2 | - |
| 10 | Standard Version | 2 x 0.4 | 47 | 2.2 | - |
| 15 | Standard Version | 2 x 0.1 | 47 | 2.2 | - |
| 1 | Medical Version (M5) | 2 x 11 | 47 | - | 1 |
| 2 | Medical Version (M5) | 2 x 4 | 47 | - | 1 |
| 6 | Medical Version (M5) | 2 x 0.7 | 47 | - | 1 |
| 8 | Medical Version (M5) | 2 x 0.6 | 47 | - | 1 |
| 10 | Medical Version (M5) | 2 x 0.4 | 47 | - | 1 |
| 15 | Medical Version (M5) | 2 x 0.1 | 47 | - | 1 |

Diagrams

Standard version

Medical version



1) Line
2) Load

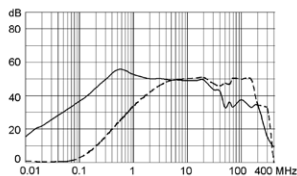
1) Line
2) Load

Attenuation Loss

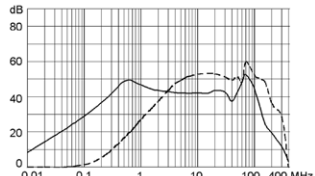
Standard version

---- differential mode ____ common mode

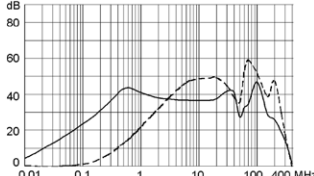
1 A



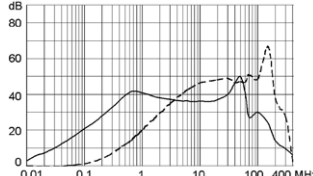
2 A



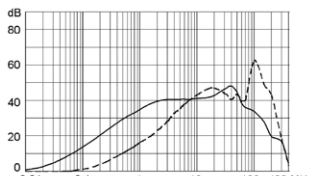
3 A



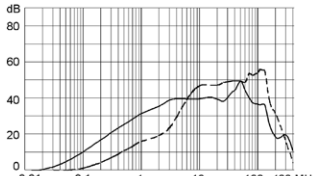
4 A



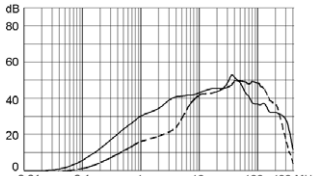
6 A



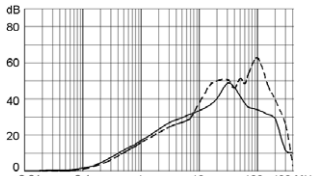
8 A



10 A

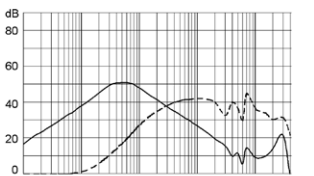


15 A

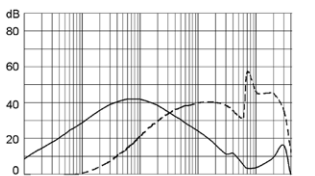


Medical version (M5)

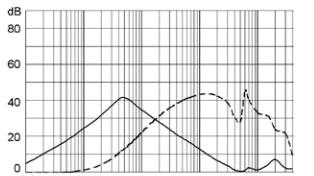
1 A



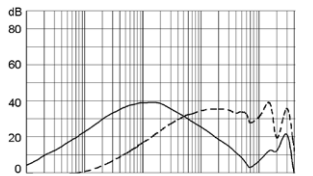
2 A



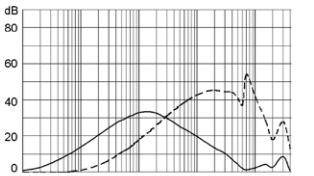
3 A



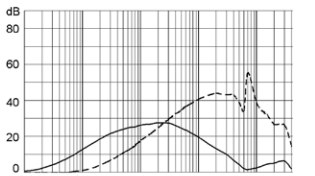
4 A



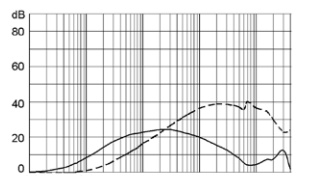
6 A



8 A



10 A



15 A

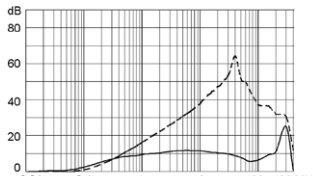


Table 1 Selection for type TA45

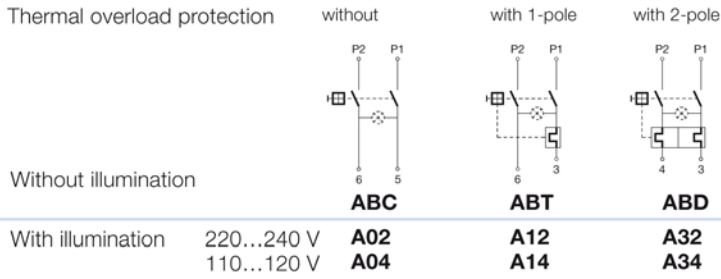
Order example



- Line switch
 - 2-pole, rocker actuated
 - Quick connect terminal
- Other types on request

ABT W F 150 C0

Diagram



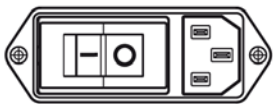
Colours

| Switch front | Rocker | |
|--------------|--------|----------------|
| W black | white | — |
| B black | black | — |
| 6 black | — | orange transp. |

Rocker legend

| Surface | Illustration | Colour of print | Surface | Illustration | Colour of print |
|----------------------|--------------|-----------------|-----------|--------------|-----------------|
| F embossed / Relief | — ○ | | M printed | — ○ | black |
| H printed / bedruckt | ON OFF | white / weiss | P printed | I ○ | white |
| K printed / bedruckt | ON OFF | black / schwarz | R printed | I ○ | black |
| L printed / bedruckt | — ○ | white / weiss | | | |

Position of the rocker legend e.g F



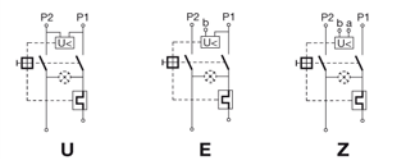
Rated current:

- Without thermal overload protection: code C00 } $I_n = 20\text{ A}$
- With thermal overload protection: rated current I_n (A)

| I_n | Code | I_n | Code | I_n | Code | I_n | Code |
|-------|------|-------|------|-------|------|-------|------|
| 0,1 | J01 | 1,3 | J13 | 2,8 | J28 | 10,0 | 100 |
| 0,2 | J02 | 1,4 | J14 | 3,0 | 030 | 11,0 | 110 |
| 0,3 | J03 | 1,5 | J15 | 3,5 | 035 | 12,0 | 120 |
| 0,4 | J04 | 1,6 | J16 | 4,0 | 040 | 13,0 | 130 |
| 0,5 | J05 | 1,7 | J17 | 4,5 | 045 | 14,0 | 140 |
| 0,6 | J06 | 1,8 | J18 | 5,0 | 050 | 15,0 | 150 |
| 0,7 | J07 | 1,9 | J19 | 6,0 | 060 | | |
| 0,8 | J08 | 2,0 | J20 | 6,5 | 065 | | |
| 0,9 | J09 | 2,1 | J21 | 7,0 | 070 | | |
| 1,0 | J10 | 2,2 | J22 | 7,5 | 075 | | |
| 1,1 | J11 | 2,3 | J23 | 8,0 | 080 | | |
| 1,2 | J12 | 2,5 | J25 | 9,0 | 090 | | |

Without release: code C0

Undervoltage release



| | | |
|---|---|---|
| • | • | • |
| • | • | • |
| • | • | • |

Remote trip release

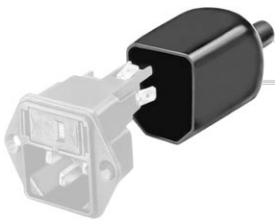


| Code | Rated voltage U_n |
|------|---------------------|
| • | 2 240 V AC |
| • | 3 230 V AC |
| • | 4 120 V AC |

Packaging unit 20 Pcs

Accessories

Description



Assorted Covers
Rear Cover

0859.0074

Mating Outlets/Connectors

Category / Description

[Appliance Outlet Overview complete](#)



| | |
|---|------|
| IEC Appliance Outlet F, Screw-on Mounting, Front Side, Solder Terminal | 4787 |
| IEC Appliance Outlet F, Snap-in Mounting, Front Side, Solder or Quick-connect Terminal | 4788 |
| IEC Appliance Outlet F or H, Screw-on Mounting, Front Side, Solder, PCB or Quick-connect Terminal | 5091 |
| IEC Appliance Outlet F or H, Screw-on Mounting, Front Side, Solder or Quick-connect Terminal | 5092 |

[Appliance Outlet further types to 5145](#)

[Connector Overview complete](#)



| | |
|--|--------|
| IEC Connector C15, Rewireable, Straight | 0101 |
| IEC Connector C15A, Rewireable, Straight | 0102 |
| IEC Connector C15A, Rewireable, Straight | 0102-G |
| IEC Connector C15A, Rewireable, Angled | 0112 |
| IEC Connector C13, Rewireable, Angled | 4012 |

[Connector further types to 5145](#)

[Power Cord Overview complete](#)

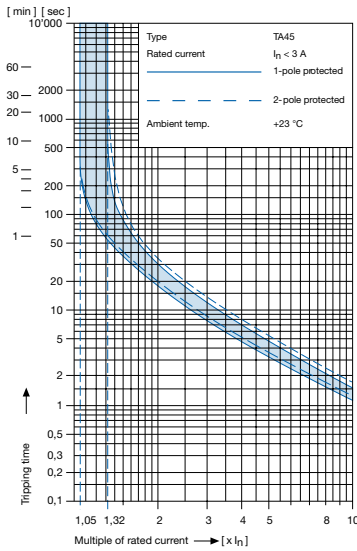


| | |
|---|------|
| Power Cord with IEC Connector C13, Angled | 0311 |
| Power Cord with IEC Connector C13, Angled | 3011 |
| Power Cord with IEC Connector C13, Angled | 3012 |
| Power Cord with IEC Connector C13, Angled | 3013 |
| Power Cord with IEC Connector C13 | 3020 |

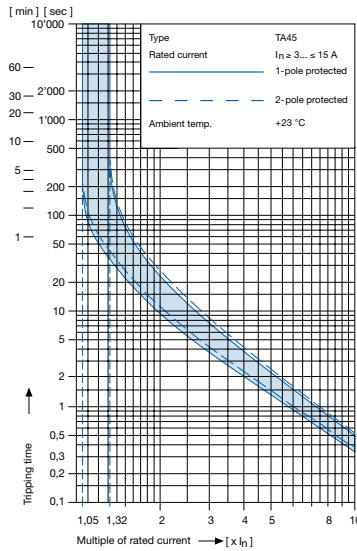
[Power Cord further types to 5145](#)

Technical data (continued)
Circuit breaker

Tripping characteristics
 $I_n < 3 A$



Tripping characteristics
 $I_n \geq 3... \leq 15 A$



Effect of ambient temperature ¹⁾

The unit is calibrated for an ambient temperature of +23 °C. To determine the rated current for a lower or higher ambient temperature, use a correction factor from the table below.

*** Ambient temperature [°C] Correction factor**

| | |
|-----|------|
| -10 | 0,89 |
| - 5 | 0,91 |
| 0 | 0,92 |
| +23 | 1,00 |
| +30 | 1,03 |
| +40 | 1,08 |
| +55 | 1,16 |

* Temperature must be measured at the rear of the breaker next to the terminals after equipment operating temperature has been reached.

¹⁾ Example

| | |
|---|---------------------------|
| Rated current at +23 °C | 6,0 A |
| Ambient temperature | +40 °C |
| Correction factor | 1,08 |
| Chosen rated current at + 40 °C ambient temperature | 6 A x 1,08 = 6,5 A |

Order code (Order example)

| | | |
|--------------|--|---|
| Type | Order code TA45 (2-pole rocker-switch without accessories) | Wiring 0 Without 1 With |
| 5145. | A B T W F 1 5 0 C 0 see table 1 | Type of line filter 1 Standard 3 Medical |
| | . 0 0 1 | Rated current of line filter 1 1 (A) 5 6 (A) 2 2 (A) 6 8 (A) 3 3 (A) 7 10 (A) 4 4 (A) 8 15 (A) |

Please note that Schurter will establish an internal part number for logistical use in addition to the order code. The format of this internal part number is, for example 5145.0031.001

X-ON Electronics

Largest Supplier of Electrical and Electronic Components

Click to view similar products for [schurter](#) manufacturer:

Other Similar products are found below :

[4420.0380](#) [4310.0028](#) [0034.7115](#) [0040.1102](#) [0001.1007.PT](#) [0034.3406](#) [0034.9889](#) [7040.3140](#) [FMAC-0934-3610](#) [FMAD-0931-0810](#) [FMBD-B92B-2512](#) [FMW-65-0005](#) [1241.3663](#) [1241.2506](#) [1301.9211](#) [DC11.0001.301](#) [9632.5100](#) [FMBC-0994-1000](#) [3-101-015](#) [4400.0344](#)
[4420.0361](#) [4752.4000](#) [5500.2605.01](#) [3404.2330.11](#) [3405.0176.11](#) [KD13.1101.105](#) [4303.1061](#) [4420.0210](#) [4430.1129](#) [4430.1892](#) [DKIP-0229-1005](#) [091132B](#) [5500.2267](#) [6162.0083](#) [8020.5081](#) [5120.1006.0.21](#) [5130.2101](#) [CD24.4101.151](#) [CD44.4199.151](#) [AS168X-CB2H030](#)
[6136.0137.0210](#) [FMBC-A91C-1610](#) [FMAC-0932-2510](#) [1068.1012.1110001](#) [GSP1.8101.1](#) [TA35-CFTBLJ04C0](#) [1241.2903.002](#)
[1241.6623.1124000](#) [1241.3008](#) [0001.2535](#)