

Copyright FCI

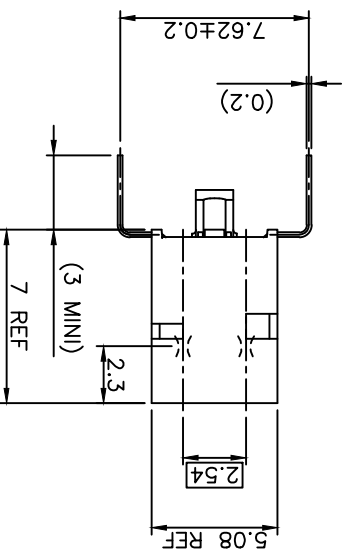
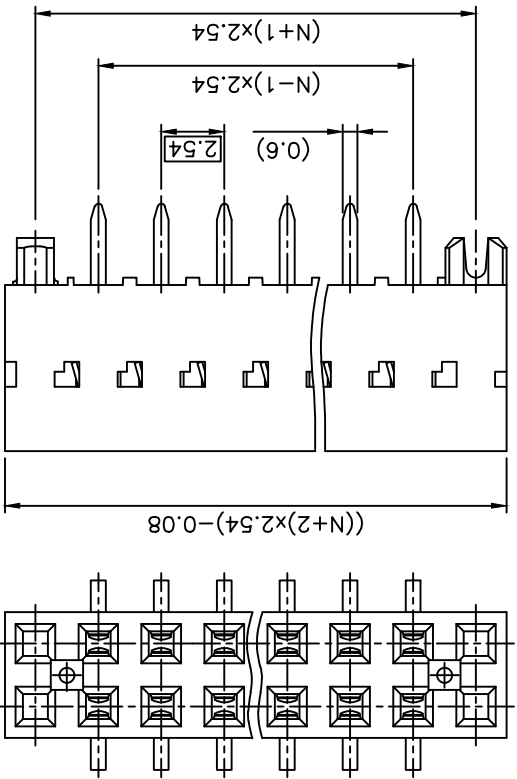


FCIconnect.com

PRODUCT NUMBER  
93696-YYXLF

ROHS COMPATIBLE, SEE NOTE 6  
NUMBER OF POSITIONS PER ROW: 03 TO 50.  
PLATING CODE  
3= 0.76µm GOLD ON CONTACT AREA.  
2µm MIN MATTE TIN ON TAIL.  
4µm MIN MATTE TIN FULL PLATED  
1.27µm NI MIN UNDERPLATING

- NOTES:
- 1 - HOUSING MAT'L: THERMOPLASTIC GLASS FILLED
  - 2 - FLAME RETARDANT PER UL 94 V-0 COLOR: GREY.
  - 3 - UP TO 50 POSITIONS PRODUCT PACKED IN TUBE.
  - 4 - TO DETERMINE DIMENSIONS:
  - 5 - N = NUMBER OF POSITIONS PER ROW
  - 6 - EXAMPLE: 8 POS: ((N+2)X2.54)-0.08=25.32 mm.
  - 7 - 0.265 MINI FOR ASSEMBLY WITHOUT INSERTION EFFORT.
  - 8 - ROHS COMPATIBLE PRODUCT SPECIFICATIONS
- d - PLATING:  
 - "LF" MEANS THE PRODUCT IS LEAD-FREE,  
 2µm MINIMUM MATTE TIN OVER 1.27µm  
 MINIMUM NICKEL UNDERPLATE.
- b - MANUFACTURING PROCESS COMPATIBILITY  
 - THE HOUSING WILL WITHSTAND EXPOSURE TO  
 260°C ±5°C SOLDER BATH TEMPERATURE FOR  
 5 SECONDS IN A WAVE SOLDER APPLICATION  
 WITH A 1.6mm MIN THICK CIRCUIT BOARD.
- c - LABELING:  
 - MEETS PACKAGING SPECS AS PER GS-14-920  
 d - LEGAL STATEMENT: SEE GS-47-0004

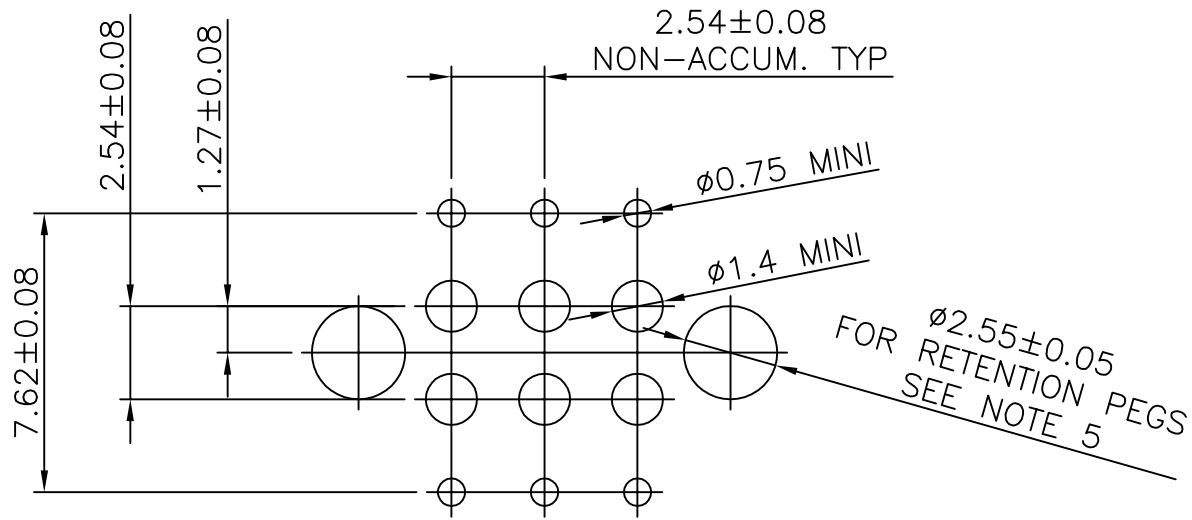


mat'l. code		ISO 1302	ISO 406	ISO 1101	projection	product family	DUBOX
SEE NOTES		tolerances unless otherwise specified	ISO 406	ISO 1101	projection	product family	DUBOX
ltr	ecn no	dr	date	tolerances unless otherwise specified	angles	linear	mm
L	F06-0204	DLE	06.06.28	tolerances unless otherwise specified	angles	linear	mm
M	F06-0323	DLE	06.11.21	tolerances unless otherwise specified	angles	linear	mm
N	B-19124	LMU	14.10.21	tolerances unless otherwise specified	angles	linear	mm
H	F10116	GCO	01.01.23	engr	P.NIZZI	95.09.20	
J	F04-0347	DLE	04.11.15	chr	P.NIZZI	95.09.20	
K	F06-0137	DLE	06.02.27	appt	JM.P	95.09.20	
sheet	revision	N	B	sheet	index		
1	2			1	2		

FCI logo  
 type CUSTOMER  
 93696  
 A3  
 sheet 1 of 2 size

title  
 BtB RECEIPT.  
 VERT DR TMT  
 scale 5:1  
 product family  
 DUBOX

6 5 4 3 2 1 6 5 4 3 2 1 6



RECOMMENDED HOLE PATTERN



FCIconnect.com

Copyright FCI

mat'l. code SEE NOTES				surface ISO 1302 <input checked="" type="checkbox"/>	tolerance ISO 406 ISO 1101	projection 	product family DUBOX			
ltr	ecn no	dr	date	tolerances unless otherwise specified		mm 	title BtB RECEPT. VERT DR TMT			
A	F04-0347	DLE	04.11.15	angles	±0.3					
B	F06-0204	DLE	06.06.28	linear		scale 5:1	dwg no		sheet 2 of -	size
				dr	D LEGRAND	04.11.15			93696 A4	
				enr	P NIZZI	04.11.15				
				chr	D LEGRAND	04.11.15				
				appd	P NZ	04.11.15				
sheet index	revision sheet									

## X-ON Electronics

Largest Supplier of Electrical and Electronic Components

*Click to view similar products for [Headers & Wire Housings](#) category:*

*Click to view products by [FCT Electronics](#) manufacturer:*

Other Similar products are found below :

[95000-104TRLF](#) [10135584-644402LF](#) [DF62W-EP2022PCA](#) [95000-106TRLF](#) [DF62W-2022SCA](#) [DF62W-EP2022PC](#) [2203348](#) [DF62W-2022SC](#) [1084018](#) [1029039](#) [1084017](#) [802-10-012-10-002000](#) [1112640](#) [1112639](#) [891-007-9SS-BST1T](#) [000-34000](#) [0008550134](#) [0009482033](#) [0009507031](#) [57102-F02-18ULF](#) [57102-S06-03LF](#) [57202-S52-04LF](#) [PCN6-15S-2.5E](#) [0039019024](#) [58102-G61-06LF](#) [582553-1](#) [0009485154](#) [0009508121](#) [009176003701906](#) [0022285053](#) [0050291907](#) [018731A](#) [LY20-4P-DT1-P1E-BR](#) [02.125.8002.8](#) [60101931](#) [60598-1 \(Cut Strip\)](#) [M1625-3R/100](#) [61062-3](#) [61082-181009](#) [CSU011177004](#) [636-1427](#) [638009-1](#) [641938-9](#) [641991-4](#) [644168-1](#) [644827-2](#) [647662-1](#) [65039-019ELF](#) [65692-001LF](#) [65781-018](#)