


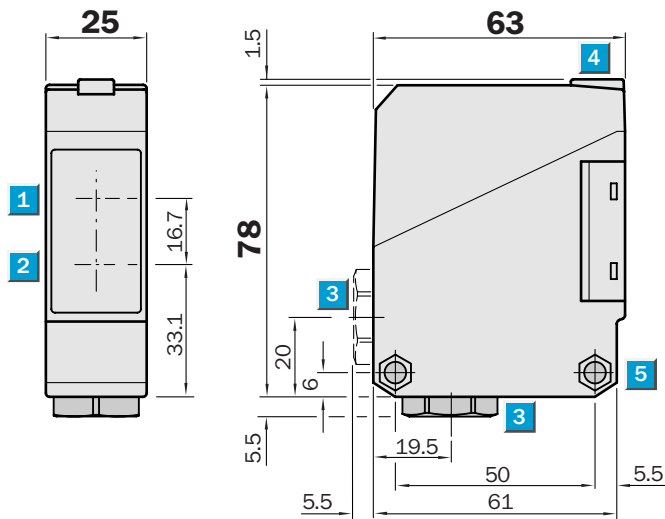
## WL 260 Photoelectric reflex switch, red light – UC


**Scanning range**  
 0.01 ... 15 m

Photoelectric reflex switch

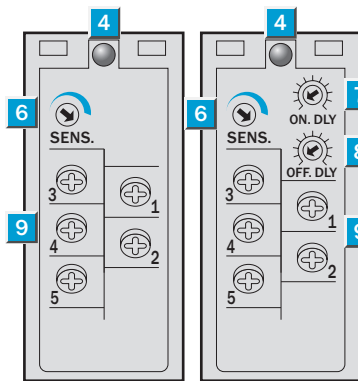
- Universal voltage
- Polarizing filter providing reliable detection even of objects with shiny surfaces
- Terminal chamber
- Relay output, SPDT, time delays
- CE generic emission standard EN 61000-6-3 ("Residential and Commercial Areas")

### Dimensional drawing



### Adjustments possible

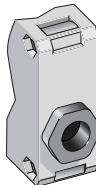
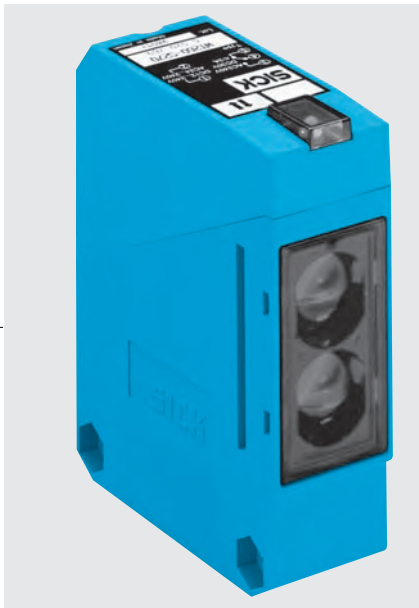
WL 260-S 270    WL 260-R 270



- 1 Middle of optic axis, receiver
- 2 Middle of optic axis, sender
- 3 Cable entry gland 1/2" PF thread for cable diameters from 6 to 10 mm optionally at bottom or rear
- 4 LED signal strength indicator, red
- 5 Through hole  $\varnothing$  5.2 mm on both sides for M5 hex nut
- 6 Sensitivity control
- 7 Time control ON delay  $t_{ON}$
- 8 Time control OFF delay  $t_{OFF}$
- 9 Terminals

### Connection types

WL 260-S 270  
WL 260-R 270

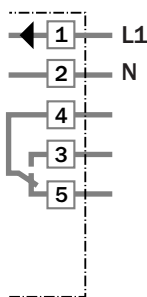


### See chapter Accessories

Mounting systems\*)  
Reflectors\*\*)

\*) Mounting bracket included with delivery  
\*\*) Reflector P 250 included with delivery

### Terminals



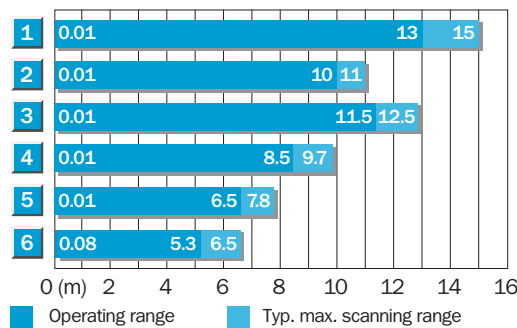
Technical data		WL 260-	S 270	R 270
<b>Scanning range</b> , typ. max./on reflector	0.01 to 15 m/PL 80 A			
	typ. max./on reflector 0.01 to 11 m/P 250 (included)			
<b>Operating range</b>	0.01 to 10 m/P 250			
Sensitivity	Adjustable, potentiometer 270°			
<b>Light source</b> <sup>1)</sup>	LED, visible red light			
	With polarizing filter			
Light spot diameter	Approx. 300 mm at 10 m			
Aperture angle sender	Approx. 1.7°			
<b>Supply voltage</b> V <sub>S</sub> <sup>2)</sup>	12 to 240 V DC			
	24 to 240 V AC			
Power consumption	≤ 5 VA			
<b>Switching output</b>	Relay, SPDT, electrically isolated <sup>3)</sup>			
	Switching current I max	3 A/240 V AC; 3 A/30 V DC <sup>4)</sup>		
	Light receiver, switching mode	Light-switching		
	Response time	≤ 20 ms		
	Switching frequency max. <sup>5)</sup>	25/s		
<b>Time delays</b>				
ON delay t <sub>ON</sub>	0.1 to 10 s, can be connected separately			
OFF delay t <sub>OFF</sub>	0.1 to 10 s, can be connected separately			
<b>Connection type</b>	Terminal chamber			
<b>CE generic emission standard</b>	Level EN 61000-6-3 ("Residential and Commercial Areas")			
<b>VDE protection class</b> <sup>6)</sup>	□			
<b>Circuit protection</b> <sup>7)</sup>	A, C			
<b>Enclosure rating</b>	IP 67			
<b>Ambient temperature</b> T <sub>A</sub>	Operation - 25 °C ... + 55 °C			
	Storage - 40 °C ... + 70 °C			
<b>Weight</b>	Approx. 120 g			
<b>Material</b>	Housing: ABS; Optics: PMMA			

<sup>1)</sup> Average service life 100,000 h at T<sub>A</sub> = + 25 °C  
<sup>2)</sup> ± 10 %

<sup>3)</sup> Provide suitable spark suppression for inductive or capacitive loads  
<sup>4)</sup> Usage categorie to EN 60947-1, 15 AC, 13 DC

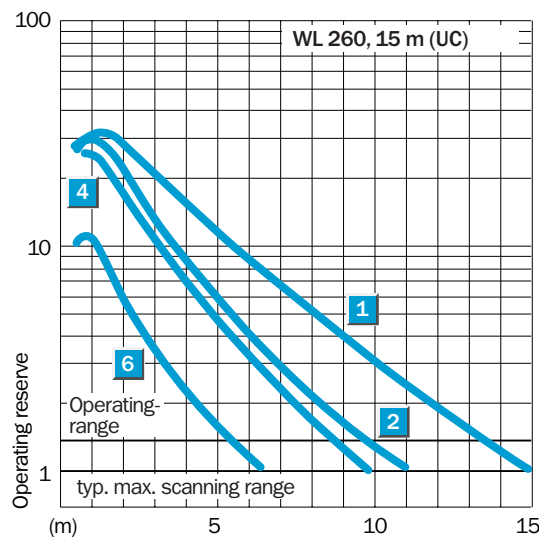
<sup>5)</sup> With light/dark ratio 1:1  
<sup>6)</sup> Reference voltage 250 V UC  
<sup>7)</sup> A = V<sub>S</sub> connections reverse-polarity protected  
C = Interference suppression

**Scanning range and operating reserve**



Reflector type	Operating range
1 PL 80 A	0.01 ... 13.0 m
2 P 250	0.01 ... 10.0 m
3 PL 50 A or PL 40 A	0.01 ... 11.5 m
4 PL 30 A or PL 31 A	0.01 ... 8.5 m
5 PL 20 A	0.01 ... 6.5 m
6 Reflective tape Diamond Grade	0.08 ... 5.3 m

05-08-2006



**Order information**

Type	Order no.
WL 260-S 270	6 020 767
WL 260-R 270	6 020 768

## X-ON Electronics

Largest Supplier of Electrical and Electronic Components

*Click to view similar products for [Photoelectric Sensors](#) category:*

*Click to view products by [Sick](#) manufacturer:*

Other Similar products are found below :

[E3JM-DS70R4T-US](#) [E3L2DC4](#) [E3RA-DN12 2M](#) [E3RA-DP12 2M](#) [E3S5LE4S](#) [E3S-AD38](#) [E3S-CR11 5M](#) [E3SCT11D5M](#) [E3SCT11M1J03M](#)  
[E3T-SL14R](#) [E3T-SL24 5M](#) [E3T-ST12R](#) [E3X-CN02](#) [E3X-CN11 5M](#) [E3X-CN21 10M](#) [E3ZM-B66](#) [E3ZM-CL81H 2M](#) [E3Z-T62 2M](#)  
[NJL5303R-TE1](#) [PB10CNT15PO](#) [PD60CNX20BP](#) [CX-491-P-J](#) [CX-491-Z](#) [XUM2BKCNL2T](#) [XUM2BKCNL2T](#) [XUM2BNANL2R](#) [Y92E-](#)  
[ES30M](#) [Y92E-GS08SS](#) [ZXTDS04T](#) [ZX-XC4A 4M](#) [E3E23Y2US](#) [E3JM-DS70S4-US](#) [E3RA-RN11 2M](#) [E3S5LE42M](#) [E3S-LS20XB4 5M](#)  
[E3TFD14N](#) [E3T-FD14R](#) [E3T-SL21 5M](#) [E3T-SL21M](#) [E3T-ST11R](#) [E3T-ST12 5M](#) [E3X-DA41-S-M1J 0.3M](#) [E3X-DAB6](#) [E3X-DAG8](#) [E3ZM-](#)  
[B86](#) [E3ZM-CR81 2M](#) [E3ZM-CR86](#) [E3Z-T61A-L 2M](#) [ZX-XGC2R](#) [ZX-XB1A](#)