

RES90F01**Rev. 0****CHARACTERISTICS:**

Rated Voltage:	250VAC max
Rated Current at Ambient:	1A @ 40°C
Operating Frequency:	DC-60HZ
Climatic Class (IEC60068-1):	25/100/21
Temperature Range:	-25°C to +100°C
Over load Current:	1.5 x Rated Ct. for 1 Min

Operational Leakage current : (at 230VAC and Total C +/-20%)	0.5 mA max
--	------------

Worst case Leakage current : (N interrupted and Total C +/-20%)	<1.0 mA max
---	-------------

DCR @ 25°C (+/-25%) :	750 mΩ
-----------------------	--------

Test Volatge (100%) for 2 sec:-	P-P:	1100VDC
	P-GND:	3000VDC

Ingress Protection:	IP 20
---------------------	-------

Weight (approximate):	75 gr
-----------------------	-------

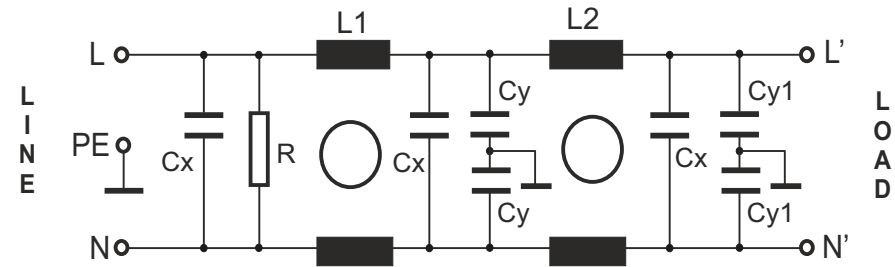
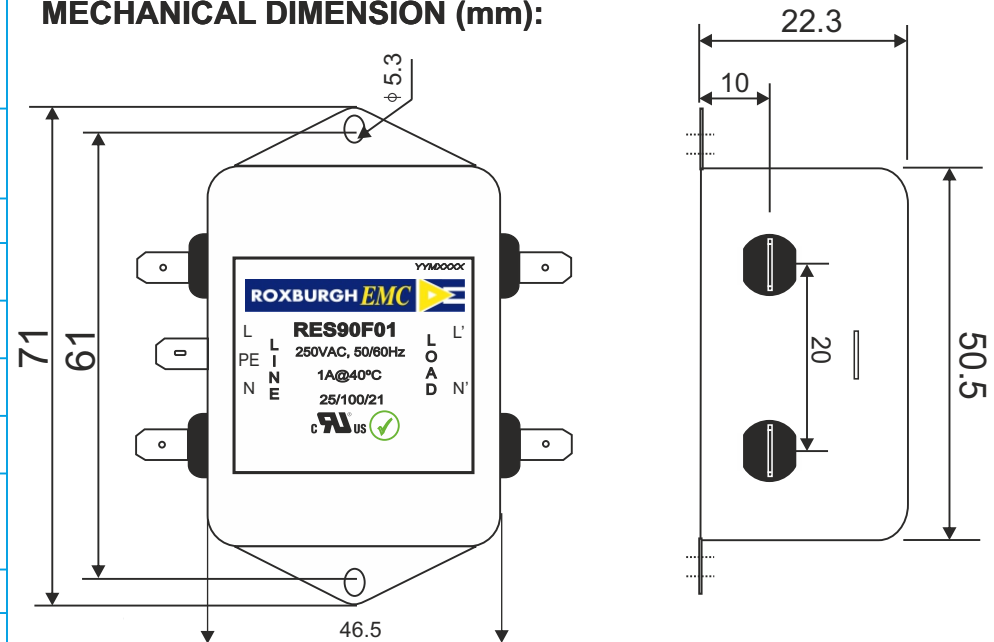
FILTER PARAMETERS:

Total Inductance (P-P'+N-N') @10KHz:	40mH +50%,-30%
Total Capacitance (P-P/P-N) @1KHz:	0.66μF +/- -20%
Total Capacitance (P/N-GND) @1KHz:	6.4nF +/- -20%
Total Resistance (P-P/P-N):	680K Ω +/- -10%
Total Resistance (P/N-GND):	

APPROVALS: REACH
RoHS
UL



APPROVED
BY
AJAY
Date:25-04-2014

CIRCUIT DIAGRAM:**MECHANICAL DIMENSION (mm):****Note:**

Housing matl. Fe with Ni Plated
Fast-On Terminal (6.38 x 0.8mm)
Connections

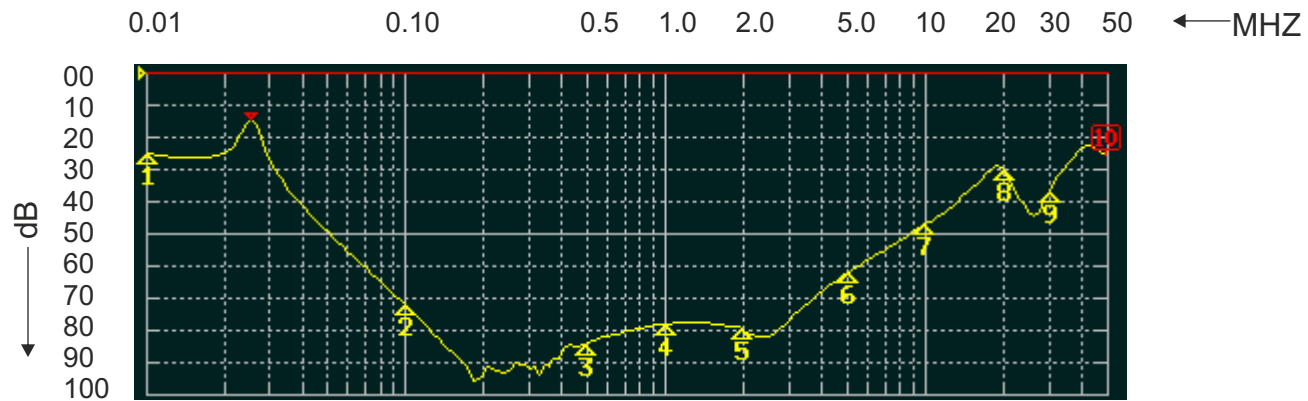
TOLERANCE: +/-1.0 mm



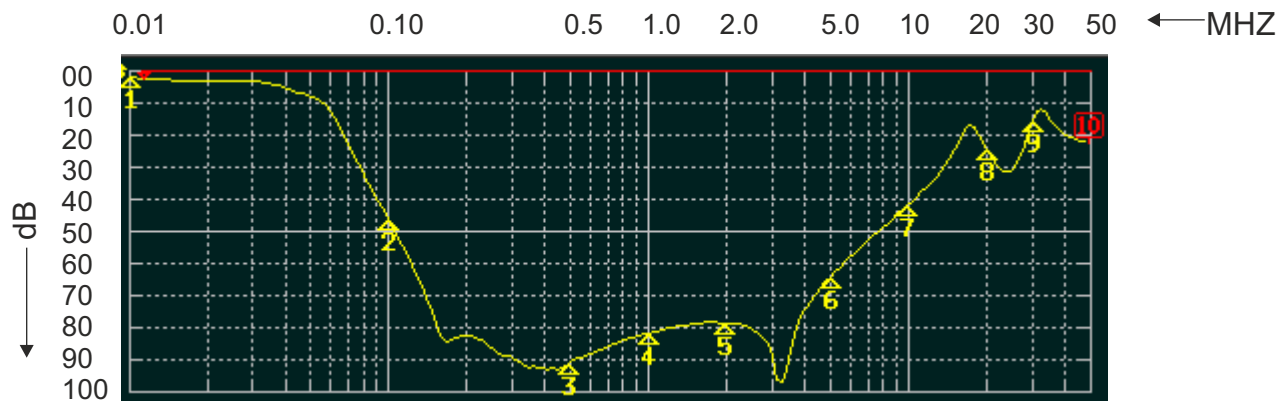
ROXBURGH EMC

FILTER INSERTION LOSS CHARACTERISTICS CISPR 17 - 50 OHM METHOD

RES90F01



COMMON MODE



DIFFERENTIAL MODE



X-ON Electronics

Largest Supplier of Electrical and Electronic Components

Click to view similar products for [roxburgh](#) manufacturer:

Other Similar products are found below :

[RES90F10](#) [KMF3100](#) [RIS0622H2](#) [XE12001](#) [SF1121](#) [RES5-FO8](#) [CMV10](#) [DVS24](#) [DRF10](#) [C225](#) [RES20F16](#) [RES20F20](#) [RES20F10](#)
[DVS240](#) [XEB01010](#) [DRF08](#) [RES5-F15](#) [RIP0642H2](#) [DRF06](#) [C215](#) [RES10F06](#) [RES30F03](#) [XE0475](#) [RID-0342-H](#) [RES5-F10](#) [RIR-0622-H](#)
[XE01010](#) [SMV20](#) [SF1123](#) [CMV30](#) [RIR-0222-H](#) [SF1122](#) [SMV40](#) [RIQ-0442-H2](#) [SMV10](#) [RX730RC+CLIP](#) [3CRH30330](#) [CMV20](#) [XE1201](#)
[RE1201](#)