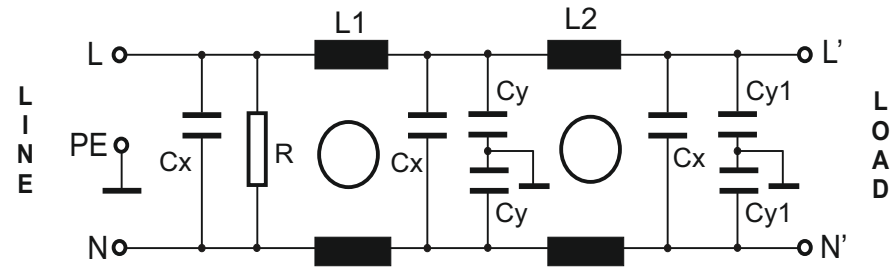
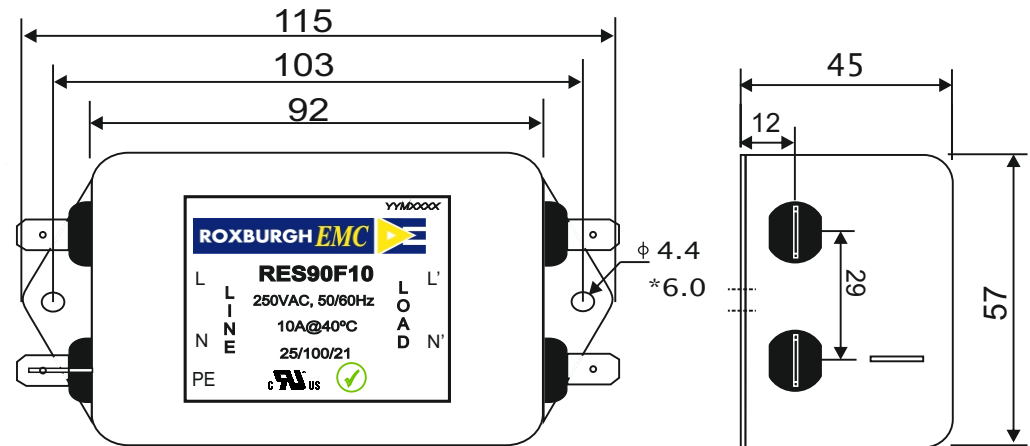


**RES90F10****Rev. 0****CHARACTERISTICS:**

Rated Voltage:	250VAC max	
Rated Current at Ambient:	10A @ 40°C	
Operating Frequency:	DC-60HZ	
Climatic Class (IEC60068-1):	25/100/21	
Temperature Range:	-25°C to +100°C	
Over load Current:	1.5 x Rated Ct. for 1 Min	
Operational Leakage current : ( at 230VAC and Total C +/-20%)	0.67 mA max	
Worst case Leakage current : ( N interrupted and Total C +/-20%)	<1.34 mA max	
DCR @ 25°C (+/-25%) :	50 mΩ	
Test Voltage (100%) for 2 sec:-	P-P: 1100VDC	
	P-GND: 3000VDC	
Ingress Protection:	IP 20	
Weight (approximate):	420 gr	
<b>FILTER PARAMETERS:</b>	Total Inductance (P-P'+N-N') @10KHz:	16mH +50%,-30%
	Total Capacitance (P-P/P-N) @1KHz:	1.41μF +/- -20%
	Total Capacitance (P/N-GND) @1KHz:	8.6nF +/- -20%
	Total Resistance (P-P/P-N):	330K Ω +/- -10%
	Total Resistance (P/N-GND):	
<b>APPROVALS:</b>	REACH ROHS UL	APPROVED BY AJAY  Date: 29-03-2014

**CIRCUIT DIAGRAM:****MECHANICAL DIMENSION (mm):****Note:**

Housing matl. Fe with Ni Plated  
Fast-On Terminal ( 6.38 x 0.8mm)  
Connections

TOLERANCE: +/-1.0 mm

**ROXBURGH EMC**

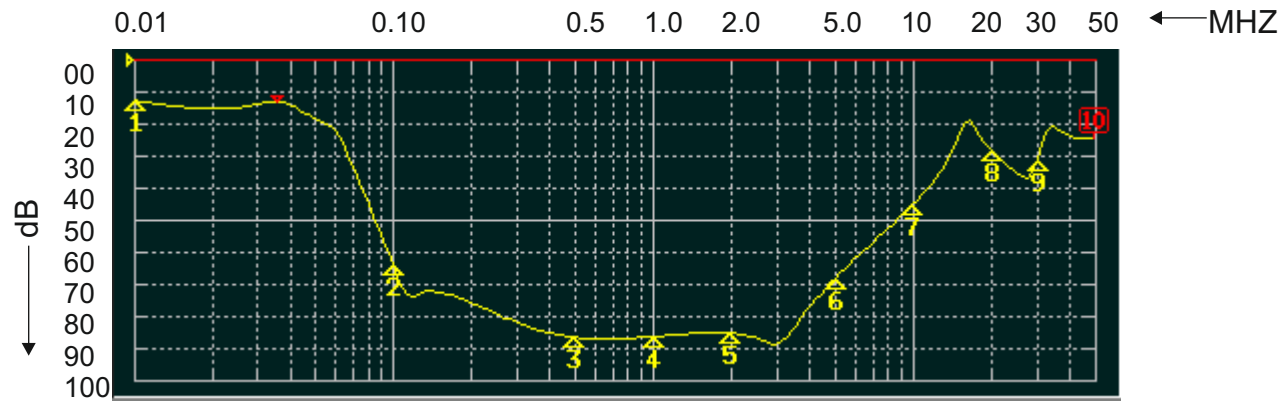
Tel:- +44(0) 1724 273200  
email:- sales@dem-uk.com  
web :- www.dem-uk.com/roxburgh

**ROXBURGH EMC**  
FILTER INSERTION LOSS CHARACTERISTICS  
CISPR 17 - 50 OHM METHOD

**RES90F10**



COMMON MODE



DIFFERENTIAL MODE



## **X-ON Electronics**

Largest Supplier of Electrical and Electronic Components

*Click to view similar products for [roxburgh](#) manufacturer:*

Other Similar products are found below :

[RES90F10](#) [KMF3100](#) [RIS0622H2](#) [XE12001](#) [SF1121](#) [RES5-FO8](#) [CMV10](#) [DVS24](#) [DRF10](#) [C225](#) [RES20F16](#) [RES20F20](#) [RES20F10](#)  
[DVS240](#) [XEB01010](#) [DRF08](#) [RES5-F15](#) [RIP0642H2](#) [DRF06](#) [C215](#) [RES10F06](#) [RES30F03](#) [XE0475](#) [RID-0342-H](#) [RES5-F10](#) [RIR-0622-H](#)  
[XE01010](#) [SMV20](#) [SF1123](#) [CMV30](#) [RIR-0222-H](#) [SF1122](#) [SMV40](#) [RIQ-0442-H2](#) [SMV10](#) [RX730RC+CLIP](#) [3CRH30330](#) [CMV20](#) [XE1201](#)  
[RE1201](#)