

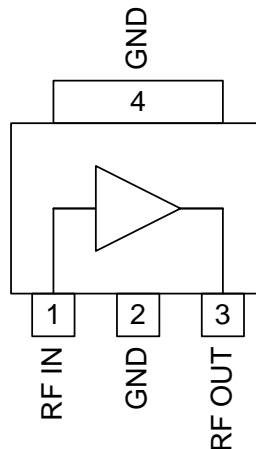


Features

- DC to >6000MHz Operation
- Internally Matched Input and Output
- 22dB Small Signal Gain
- +2.0dB Noise Figure
- +11dBm Output P1dB
- Useable with 5V Supply

Applications

- Basestation Applications
- Broadband, Low-Noise Gain Blocks
- IF or RF Buffer Amplifiers
- Driver Stage for Power Amplifiers
- Final PA for Low-Power Applications
- High Reliability Applications



Functional Block Diagram

Product Description

The RF3376 is a general purpose, low-cost RF amplifier IC. The device is manufactured on an advanced Gallium Arsenide Heterojunction Bipolar Transistor (HBT) process, and has been designed for use as an easily-cascadable 50Ω gain block. Applications include IF and RF amplification in wireless voice and data communication products operating in frequency bands up to 6000MHz. The device is self-contained with 50Ω input and output impedances and requires only two external DC-biasing elements to operate as specified.

Ordering Information

RF3376	Sample bag with 25 pieces
RF3376SR	7" reel with 100 pieces
RF3376TR13	13" reel with 2500 pieces
RF3376PCK-410	0MHz to 6000MHz PCBA with 5-piece sample bag

RF MICRO DEVICES®, RFMD®, Optimum Technology Matching®, Enabling Wireless Connectivity™, PowerStar®, POLARIS™ TOTAL RADIO™ and UltimateBlue™ are trademarks of RFMD, LLC. BLUETOOTH is a trademark owned by Bluetooth SIG, Inc., U.S.A. and licensed for use by RFMD. All other trade names, trademarks and registered trademarks are the property of their respective owners. ©2012, RF Micro Devices, Inc.

Absolute Maximum Ratings

Parameter	Rating	Unit
Input RF Power	+3	dBm
Operating Ambient Temperature	-40 to +85	°C
Storage Temperature	-60 to +150	°C
I _{CC}	50	mA



Caution! ESD sensitive device.

Exceeding any one or a combination of the Absolute Maximum Rating conditions may cause permanent damage to the device. Extended application of Absolute Maximum Rating conditions to the device may reduce device reliability. Specified typical performance or functional operation of the device under Absolute Maximum Rating conditions is not implied.

RoHS status based on EU Directive 2002/95/EC (at time of this document revision).

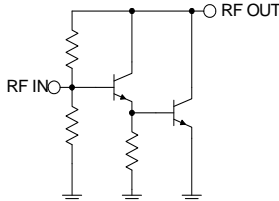
The information in this publication is believed to be accurate and reliable. However, no responsibility is assumed by RF Micro Devices, Inc. ("RFMD") for its use, nor for any infringement of patents, or other rights of third parties, resulting from its use. No

Parameter	Specification			Unit	Condition
	Min.	Typ.	Max.		
Overall					T=25 °C, I _{CC} =35mA (See Note 1.)
Frequency Range		DC to >6000		MHz	
3dB Bandwidth		2		GHz	
Gain		23.5		dB	Freq = 500MHz
		22.5		dB	Freq = 1000MHz
	18.0	19.8		dB	Freq = 2000MHz
		18.0		dB	Freq = 3000MHz
		16.0			Freq = 4000MHz
		12.8			Freq = 6000MHz
Noise Figure		2.0		dB	Freq = 2000MHz
Input VSWR		<2:1			In a 50Ω system, DC to 4500MHz
Output VSWR		<2:1			In a 50Ω system, DC to 6000MHz
Output IP ₃		+24.4		dBm	Freq = 1000MHz
	+21.5	+23.4		dBm	Freq = 2000MHz
Output P _{1dB}		+11.5		dBm	Freq = 1000MHz
	+9.5	+11.5		dBm	Freq = 2000MHz
Reverse Isolation		22.5		dB	Freq = 2000MHz
Thermal					I _{CC} = 35mA (See Note 3.)
Theta _{JC}		216		°C/W	
Maximum Measured Junction Temperature at DC Bias Conditions		110		°C	T _{CASE} = +85 °C
Mean Time To Failures		>100		years	T _{CASE} = +85 °C
Power Supply					With 22Ω bias resistor
Device Operating Voltage		3.3		V	At pin 3 with I _{CC} = 35mA
		5.0		v	At evaluation board connector, I _{CC} = 35mA
Operating Current		35	50	mA	See Note 2.

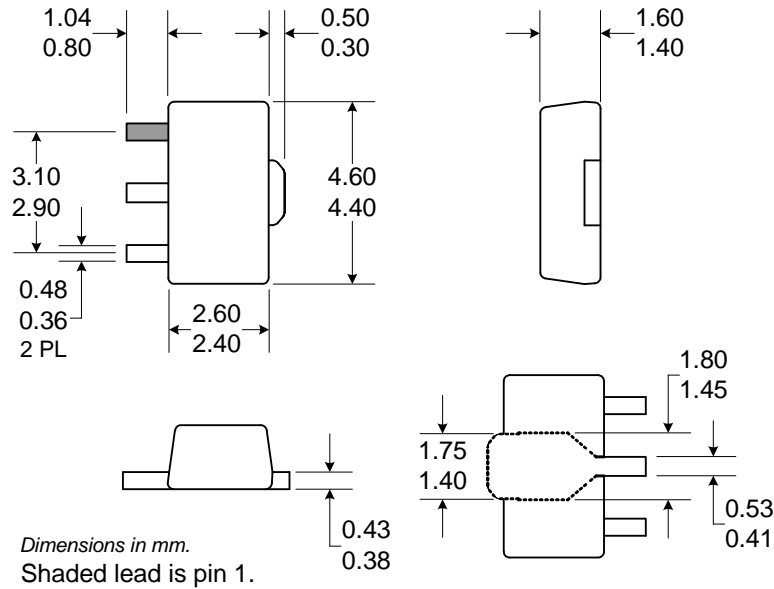
Note 1: All specification and characterization data has been gathered on standard FR-4 evaluation boards. These evaluation boards are not optimized for frequencies above 2.5GHz. Performance above 2.5GHz may improve if a high performance PCB is used.

Note 2: The RF3376 must be operated below 50mA. 35mA to 45mA is the recommended bias to ensure the highest possible reliability and electrical performance.

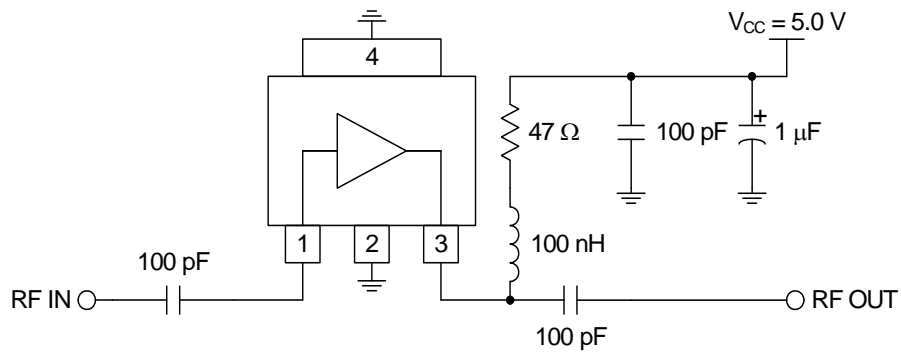
Note 3: Because of process variations from part to part, the current resulting from a fixed bias voltage will vary. As a result, caution should be used in designing fixed voltage bias circuits to ensure the worst case bias current does not exceed 50mA over all intended operating conditions.

Pin	Function	Description	Interface Schematic
1	RF IN	RF input pin. This pin is NOT internally DC blocked. A DC blocking capacitor, suitable for the frequency of operation, should be used in most applications. DC coupling of the input is not allowed, because this will override the internal feedback loop and cause temperature instability.	
2	GND	Ground connection.	
3	RF OUT	RF output and bias pin. Biasing is accomplished with an external series resistor and choke inductor to V_{CC} . The resistor is selected to set the DC current into this pin to a desired level. The resistor value is determined by the following equation: $R = \frac{(V_{SUPPLY} - V_{DEVICE})}{I_{CC}}$ <p>Care should also be taken in the resistor selection to ensure that the current into the part never exceeds 40mA over the planned operating temperature. This means that a resistor between the supply and this pin is always required, even if a supply near 3.4V is available, to provide DC feedback to prevent thermal runaway. Because DC is present on this pin, a DC blocking capacitor, suitable for the frequency of operation, should be used in most applications. The supply side of the bias network should also be well bypassed.</p>	
4	GND	Ground connection.	

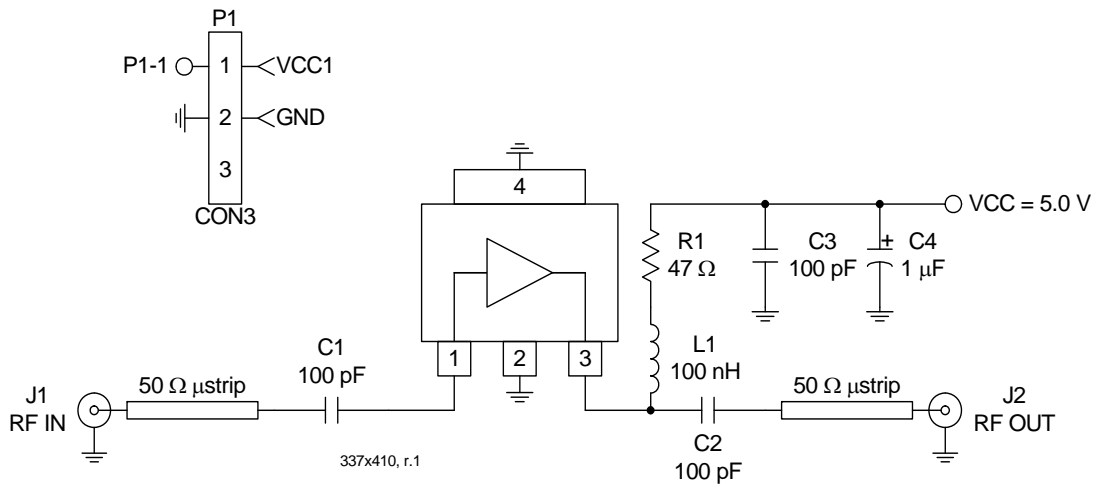
Package Drawing



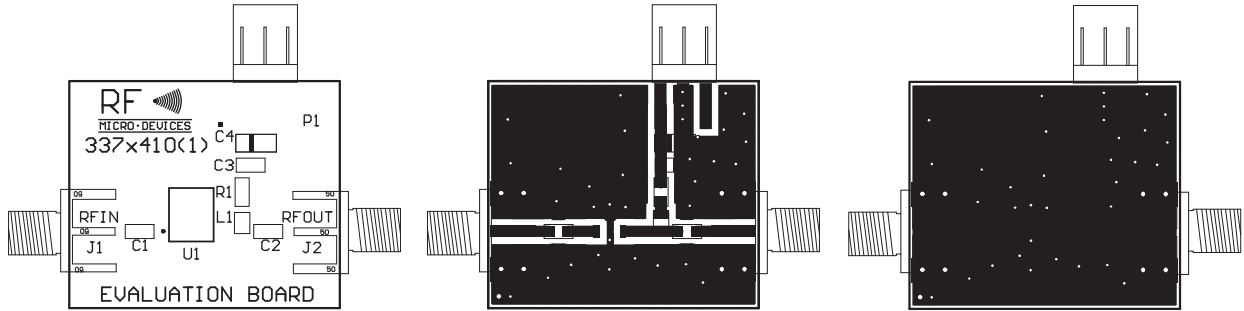
Application Schematic

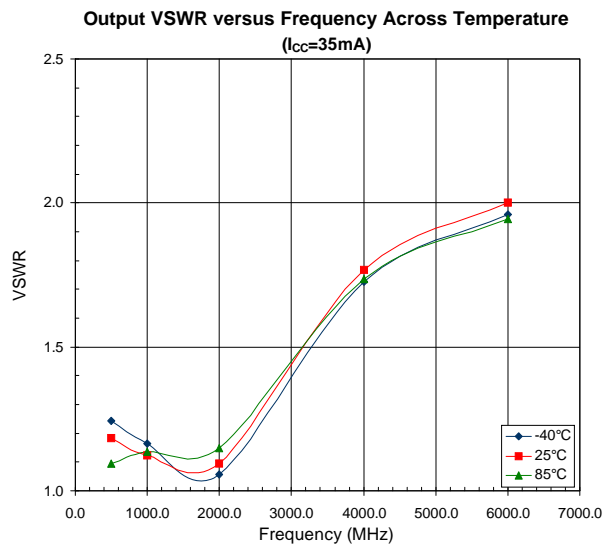
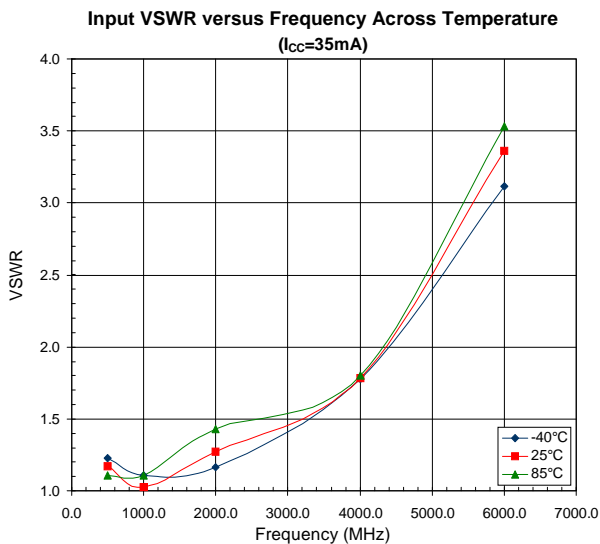
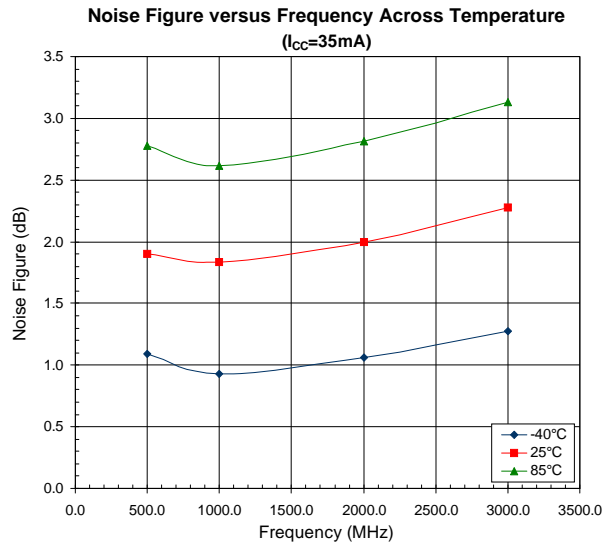
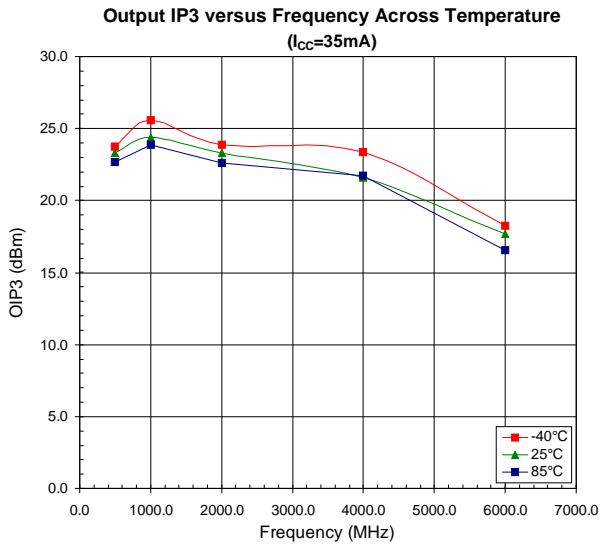
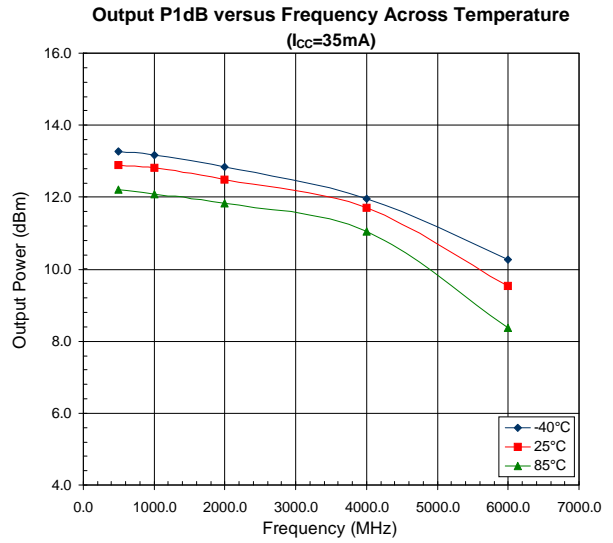
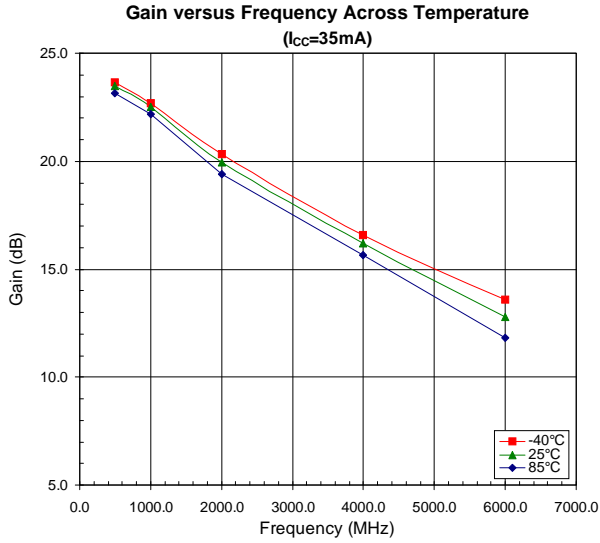


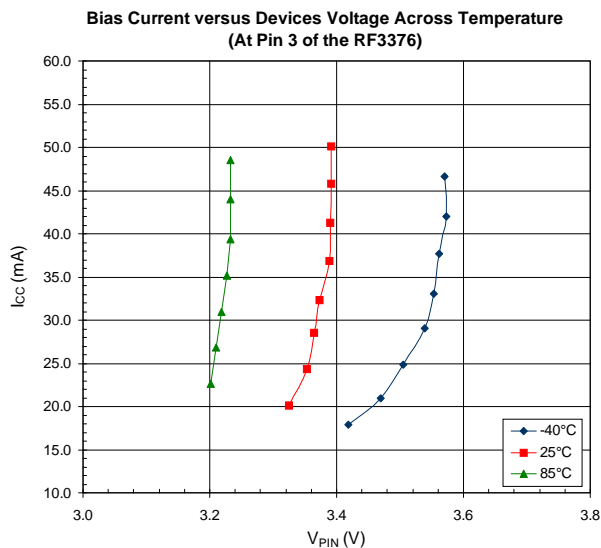
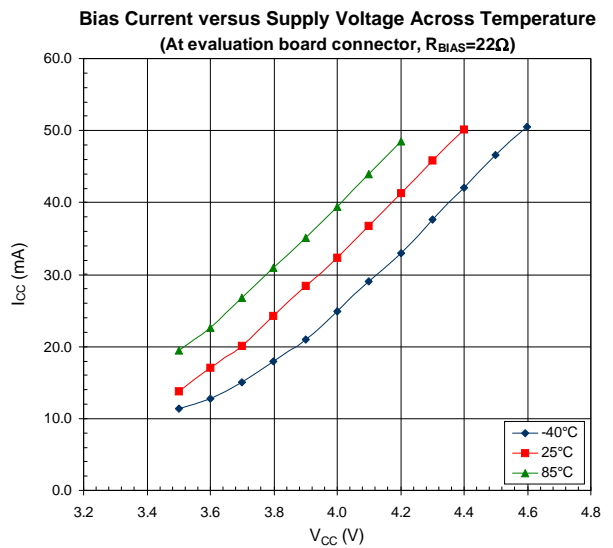
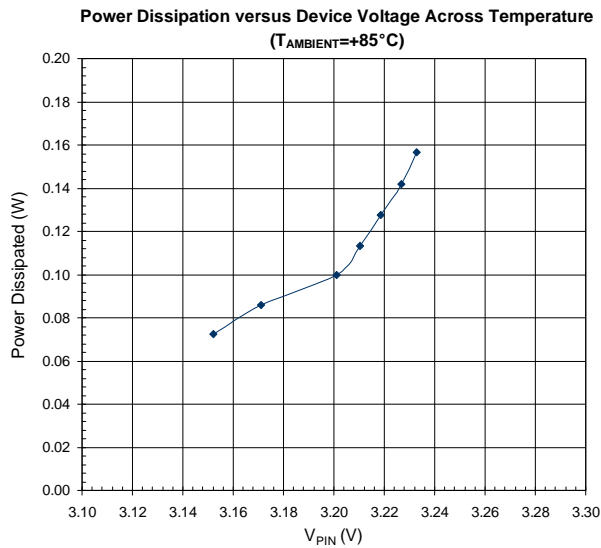
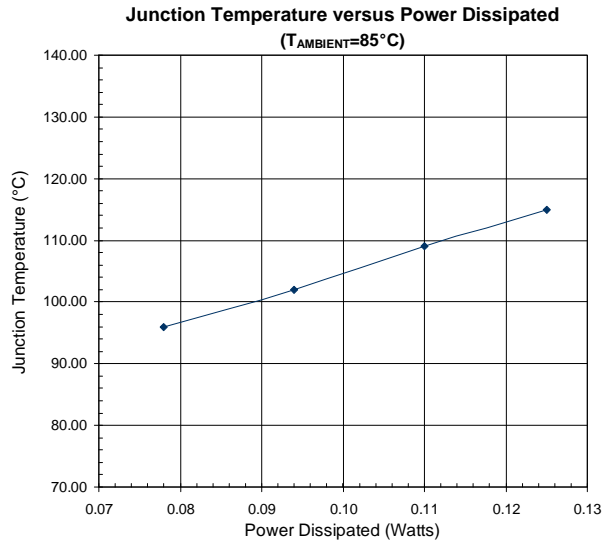
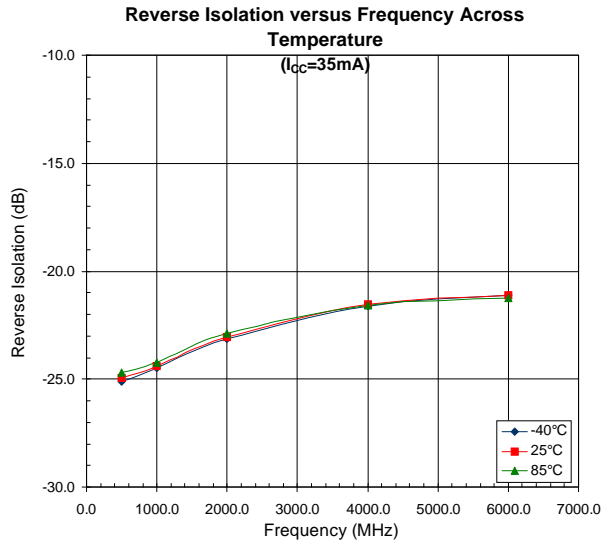
Evaluation Board Schematic



Evaluation Board Layout
Board Size 1.195" x 1.000"
Board Thickness 0.033", Board Material FR-4







X-ON Electronics

Largest Supplier of Electrical and Electronic Components

Click to view similar products for [rfmd](#) manufacturer:

Other Similar products are found below :

[S10040220GT](#) [S10040180P1](#) [NBB-400-T1](#) [SPF5189Z](#) [NBB-310-T1](#) [SPF5122Z](#) [SPF5043Z](#) [RFSA2033TR7](#)