

**REPETITIVE AVALANCHE AND dv/dt RATED  
 HEXFET<sup>®</sup> TRANSISTORS  
 THRU-HOLE (TO-204AA/AE)**

**IRF150  
 JANTX2N6764  
 JANTXV2N6764  
 [REF:MIL-PRF-19500/543]  
 100V, N-CHANNEL**

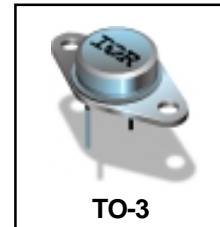
**Product Summary**

| Part Number | BVDSS | RDS(on) | ID  |
|-------------|-------|---------|-----|
| IRF150      | 100V  | 0.055Ω  | 38A |

The HEXFET<sup>®</sup> technology is the key to International Rectifier's advanced line of power MOSFET transistors. The efficient geometry and unique processing of this latest "State of the Art" design achieves: very low on-state resistance combined with high transconductance; superior reverse energy and diode recovery dv/dt capability.

The HEXFET transistors also feature all of the well established advantages of MOSFETs such as voltage control, very fast switching, ease of paralleling and temperature stability of the electrical parameters.

They are well suited for applications such as switching power supplies, motor controls, inverters, choppers, audio amplifiers and high energy pulse circuits.



**Features:**

- Repetitive Avalanche Ratings
- Dynamic dv/dt Rating
- Hermetically Sealed
- Simple Drive Requirements
- Ease of Paralleling

**Absolute Maximum Ratings**

|                            | Parameter                       |   | Units |
|----------------------------|---------------------------------|---|-------|
| ID @ VGS = 10V, TC = 25°C  | Continuous Drain Current        | 38  | A     |
| ID @ VGS = 10V, TC = 100°C | Continuous Drain Current        | 24  |       |
| IDM                        | Pulsed Drain Current ①          | 152                                       |       |
| PD @ TC = 25°C             | Max. Power Dissipation          | 150                                       | W     |
|                            | Linear Derating Factor          | 1.2                                       | W/°C  |
| VGS                        | Gate-to-Source Voltage          | ±20                                       | V     |
| EAS                        | Single Pulse Avalanche Energy ② | 150                                       | mJ    |
| IAR                        | Avalanche Current ①             | 38  | A     |
| EAR                        | Repetitive Avalanche Energy ①   | 15  | mJ    |
| dv/dt                      | Peak Diode Recovery dv/dt ③     | 5.5                                       | V/ns  |
| TJ                         | Operating Junction              | -55 to 150                                | °C    |
| TSTG                       | Storage Temperature Range       |   |       |
|                            | Lead Temperature                | 300 (0.063 in. (1.6mm) from case for 10s) |       |
|                            | Weight                          | 11.5 (typical)                            | g     |

For footnotes refer to the last page

**Electrical Characteristics @ T<sub>j</sub> = 25°C (Unless Otherwise Specified)**

|                                     | Parameter                                    | Min | Typ  | Max            | Units               | Test Conditions  |
|-------------------------------------|--|-----|------|----------------|---------------------|--|
| BV <sub>DSS</sub>                   | Drain-to-Source Breakdown Voltage            | 100 | —    | —              | V                   | V <sub>GS</sub> = 0V, I <sub>D</sub> = 1.0mA   |
| ΔBV <sub>DSS</sub> /ΔT <sub>J</sub> | Temperature Coefficient of Breakdown Voltage | —   | 0.13 | —              | V/°C                | Reference to 25°C, I <sub>D</sub> = 1.0mA  |
| R <sub>DS(on)</sub>                 | Static Drain-to-Source On-State Resistance   | —   | —    | 0.055<br>0.065 | Ω                   | V <sub>GS</sub> = 10V, I <sub>D</sub> = 24A <sup>④</sup><br>V <sub>GS</sub> = 10V, I <sub>D</sub> = 38A <sup>④</sup> |
| V <sub>GS(th)</sub>                 | Gate Threshold Voltage                       | 2.0 | —    | 4.0            | V                   | V <sub>DS</sub> = V <sub>GS</sub> , I <sub>D</sub> = 250μA   |
| g <sub>fs</sub>                     | Forward Transconductance                     | 9.0 | —    | —              | S (r <sub>s</sub> ) | V <sub>DS</sub> > 15V, I <sub>DS</sub> = 24A <sup>④</sup>  |
| I <sub>DSS</sub>                    | Zero Gate Voltage Drain Current              | —   | —    | 25<br>250      | μA                  | V <sub>DS</sub> = 80V, V <sub>GS</sub> = 0V<br>V <sub>DS</sub> = 80V<br>V <sub>GS</sub> = 0V, T <sub>J</sub> = 125°C |
| I <sub>GSS</sub>                    | Gate-to-Source Leakage Forward               | —   | —    | 100            | nA                  | V <sub>GS</sub> = 20V  |
| I <sub>GSS</sub>                    | Gate-to-Source Leakage Reverse               | —   | —    | -100           | nA                  | V <sub>GS</sub> = -20V   |
| Q <sub>g</sub>                      | Total Gate Charge                            | 50  | —    | 125            | nC                  | V <sub>GS</sub> = 10V, I <sub>D</sub> = 38A<br>V <sub>DS</sub> = 50V   |
| Q <sub>gs</sub>                     | Gate-to-Source Charge                        | 8.0 | —    | 22             | nC                  |  |
| Q <sub>gd</sub>                     | Gate-to-Drain ('Miller') Charge              | 25  | —    | 65             | nC                  |  |
| t <sub>d(on)</sub>                  | Turn-On Delay Time                           | —   | —    | 35             | ns                  | V <sub>DD</sub> = 50V, I <sub>D</sub> = 38A,<br>V <sub>GS</sub> = 10V, R <sub>G</sub> = 2.35Ω                        |
| t <sub>r</sub>                      | Rise Time                                    | —   | —    | 190            |                     |  |
| t <sub>d(off)</sub>                 | Turn-Off Delay Time                          | —   | —    | 170            |                     |  |
| t <sub>f</sub>                      | Fall Time                                    | —   | —    | 130            |                     |  |
| L <sub>S</sub> + L <sub>D</sub>     | Total Inductance                             | —   | 6.1  | —              | nH                  | Measured from the center of drain pad to center of source pad  |
| C <sub>iss</sub>                    | Input Capacitance                            | —   | 3700 | —              | pF                  | V <sub>GS</sub> = 0V, V <sub>DS</sub> = 25V<br>f = 1.0MHz  |
| C <sub>oss</sub>                    | Output Capacitance                           | —   | 1100 | —              |                     |  |
| C <sub>rss</sub>                    | Reverse Transfer Capacitance                 | —   | 200  | —              |                     |  |

**Source-Drain Diode Ratings and Characteristics**

|                 | Parameter                                      | Min  | Typ | Max | Units | Test Conditions  |
|-----------------|--|--|-----|-----|-------|--|
| I <sub>S</sub>  | Continuous Source Current (Body Diode)         | —  | —   | 38  | A     |  |
| I <sub>SM</sub> | Pulse Source Current (Body Diode) <sup>①</sup> | —  | —   | 152 |       |  |
| V <sub>SD</sub> | Diode Forward Voltage                          | —  | —   | 1.9 | V     | T <sub>j</sub> = 25°C, I <sub>S</sub> = 38A, V <sub>GS</sub> = 0V <sup>④</sup> |
| t <sub>rr</sub> | Reverse Recovery Time                          | —  | —   | 500 | rS    | T <sub>j</sub> = 25°C, I <sub>F</sub> = 38A, di/dt ≤ 100A/μs                   |
| Q <sub>RR</sub> | Reverse Recovery Charge                        | —  | —   | 2.9 | μC    | V <sub>DD</sub> ≤ 30V <sup>④</sup>   |
| t <sub>on</sub> | Forward Turn-On Time                           | Intrinsic turn-on time is negligible. Turn-on speed is substantially controlled by L <sub>S</sub> + L <sub>D</sub> . |     |     |       |  |

**Thermal Resistance**

|                   | Parameter           | Min | Typ | Max  | Units | Test Conditions      |
|-------------------|---------------------|-----|-----|------|-------|----------------------|
| R <sub>thJC</sub> | Junction to Case    | —   | —   | 0.83 | °C/W  | Typical socket mount |
| R <sub>thJA</sub> | Junction to Ambient | —   | —   | 30   |       |                      |

For footnotes refer to the last page

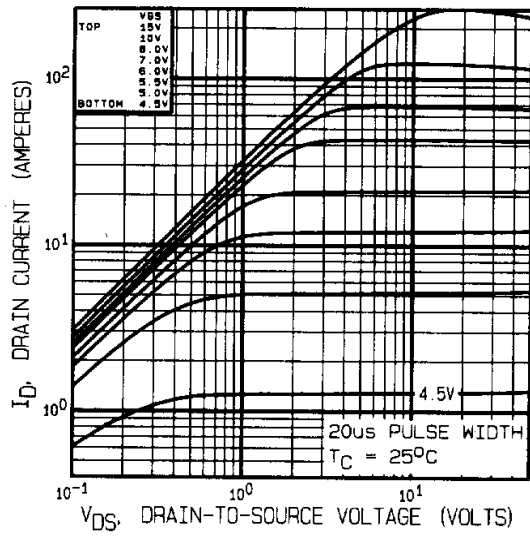


Fig 1. Typical Output Characteristics

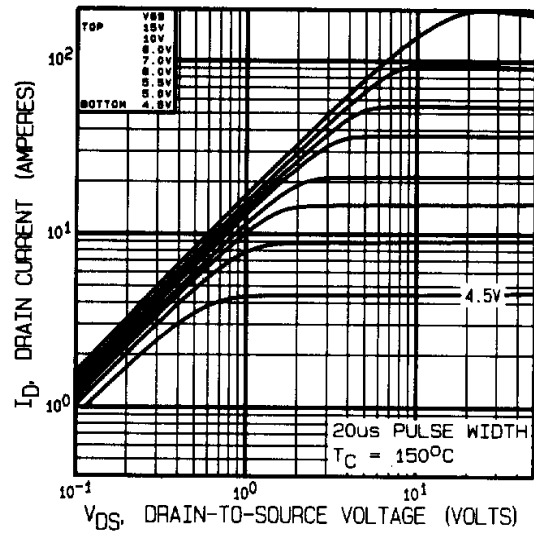


Fig 2. Typical Output Characteristics

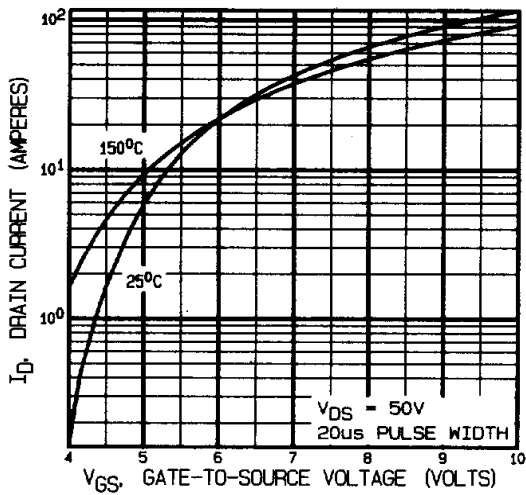


Fig 3. Typical Transfer Characteristics

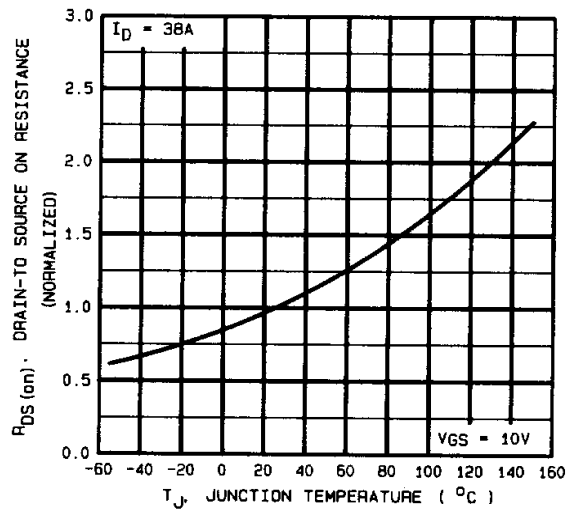


Fig 4. Normalized On-Resistance Vs. Temperature

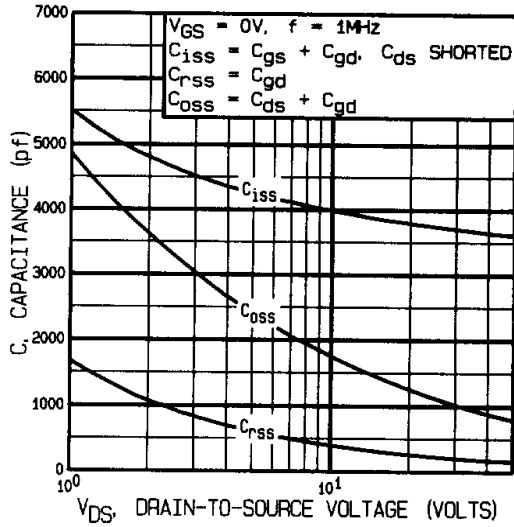


Fig 5. Typical Capacitance Vs. Drain-to-Source Voltage

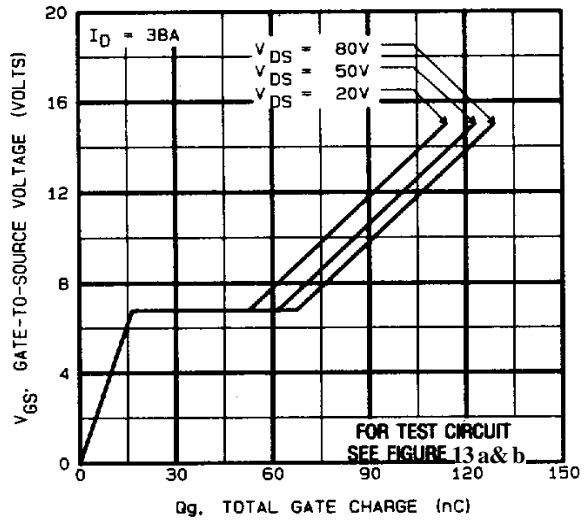


Fig 6. Typical Gate Charge Vs. Gate-to-Source Voltage

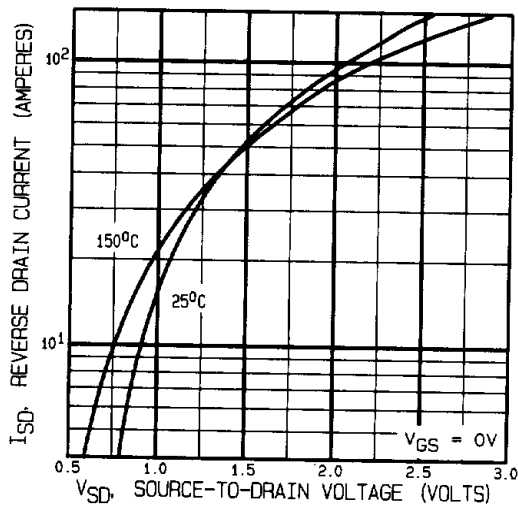


Fig 7. Typical Source-Drain Diode Forward Voltage

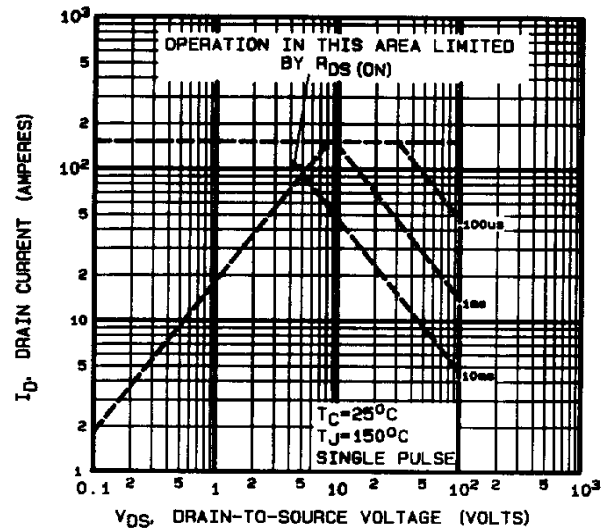


Fig 8. Maximum Safe Operating Area

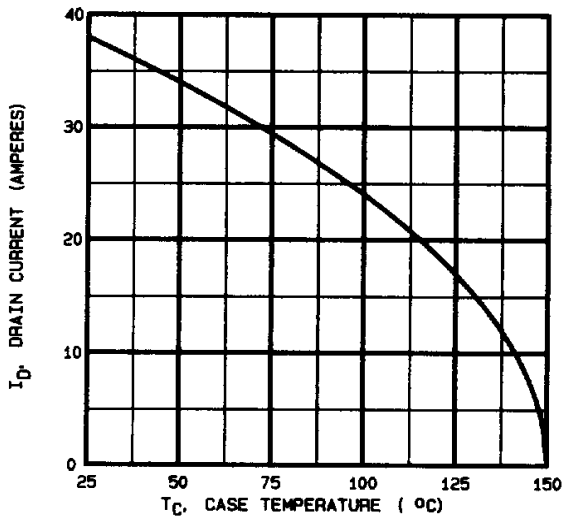


Fig 9. Maximum Drain Current Vs. Case Temperature

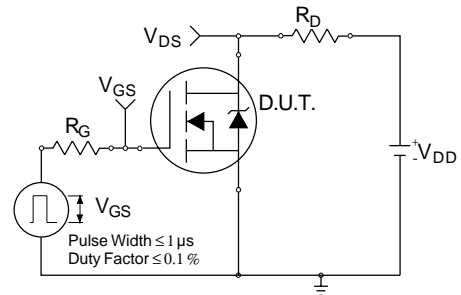


Fig 10a. Switching Time Test Circuit

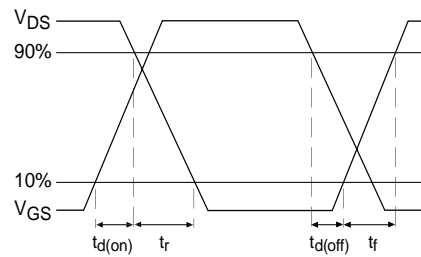


Fig 10b. Switching Time Waveforms

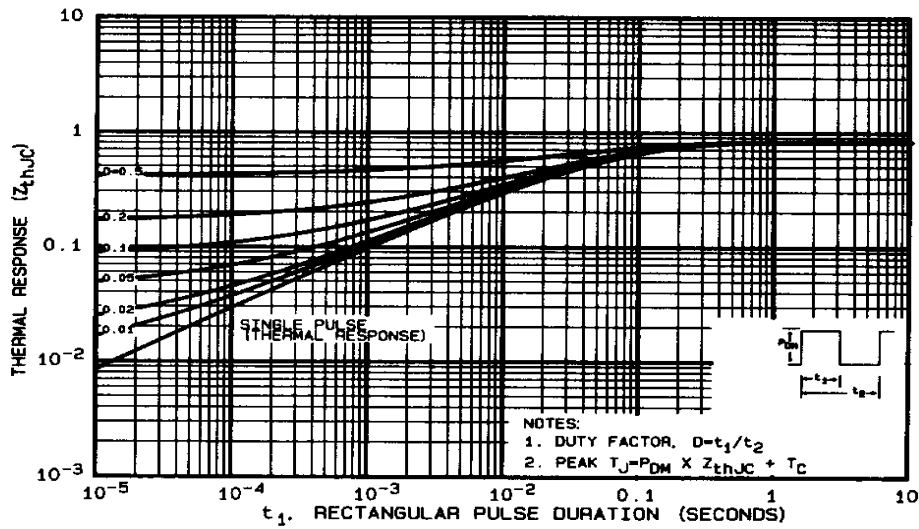


Fig 11. Maximum Effective Transient Thermal Impedance, Junction-to-Case

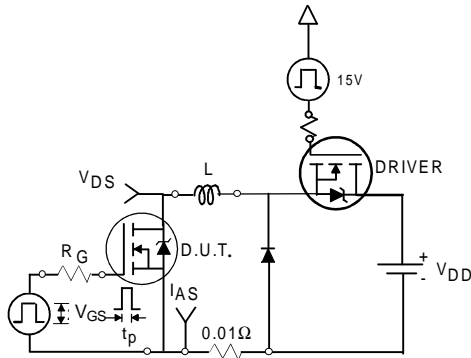


Fig 12a. Unclamped Inductive Test Circuit

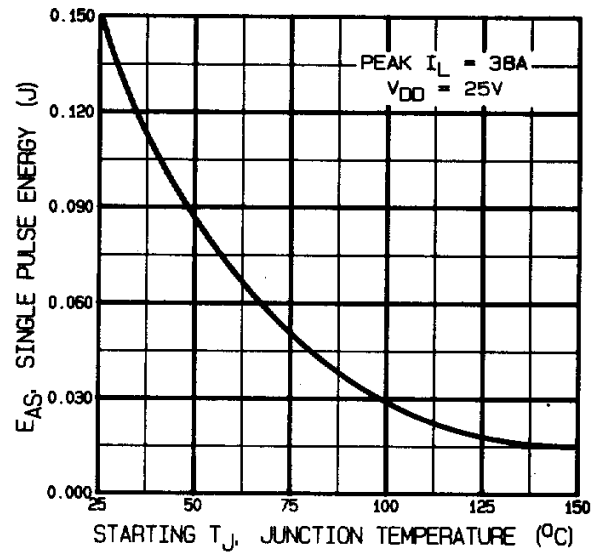


Fig 12c. Maximum Avalanche Energy Vs. Drain Current

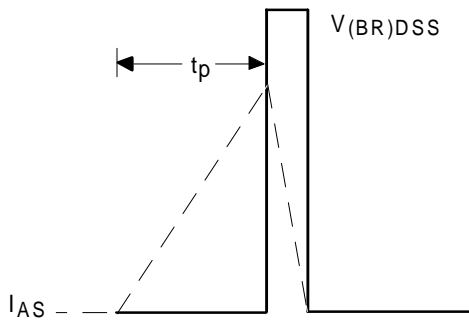


Fig 12b. Unclamped Inductive Waveforms

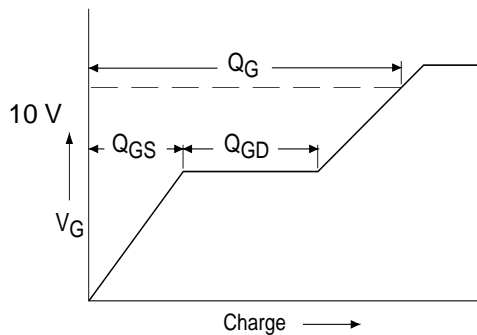


Fig 13a. Basic Gate Charge Waveform

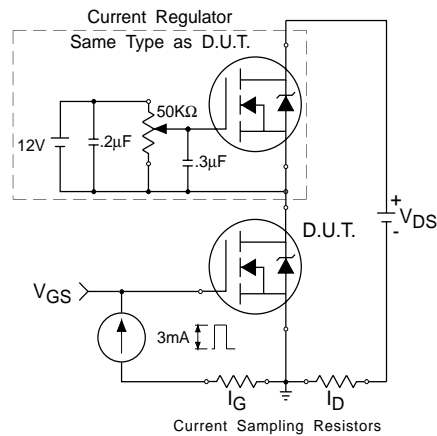
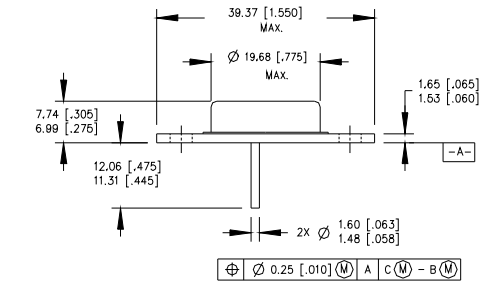


Fig 13b. Gate Charge Test Circuit

**Foot Notes:**

- ① Repetitive Rating; Pulse width limited by maximum junction temperature.
- ②  $V_{DD} = 50V$ , starting  $T_J = 25^\circ C$ ,  
Peak  $I_L = 38A$ ,  $V_{GS} = 10V$
- ③  $I_{SD} \leq 38A$ ,  $di/dt \leq 300A/\mu s$ ,  
 $V_{DD} \leq 100V$ ,  $T_J \leq 150^\circ C$   
Suggested  $R_G = 2.35 \Omega$
- ④ Pulse width  $\leq 300 \mu s$ ; Duty Cycle  $\leq 2\%$

**Case Outline and Dimensions —TO-204AE (Modified TO-3)**

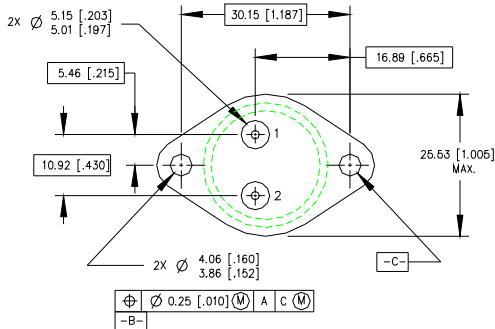


**PIN ASSIGNMENTS**

- 1 - SOURCE
- 2 - GATE
- 3 - DRAIN (CASE)

**NOTES:**

1. DIMENSIONING & TOLERANCING PER ANSI Y14.6M-1982.
2. CONTROLLING DIMENSION: INCH.
3. DIMENSIONS ARE SHOWN IN MILLIMETERS [INCHES].
4. OUTLINE CONFORMS TO JEDEC OUTLINE TO-204AE.



## X-ON Electronics

Largest Supplier of Electrical and Electronic Components

*Click to view similar products for [infineon](#) manufacturer:*

Other Similar products are found below :

[TLE6209R](#) [EVALM113023645ATOBO1](#) [EVALM11302TOBO1](#) [FD1000R33HE3-K](#) [FD300R06KE3](#) [FF1200R17KE3\\_B2](#)  
[FF300R06KE3HOSA1](#) [FF600R12ME4P](#) [FF600R17ME4\\_B11](#) [FP25R12KT4\\_B11](#) [FS150R12KE3G](#) [FS600R07A2E3\\_B31](#)  
[FZ1600R17HP4\\_B2](#) [FZ1800R17KF4](#) [FZ2400R17HE4\\_B9](#) [FZ600R65KE3](#) [DD261N22K](#) [DF1000R17IE4](#) [AUIRL1404ZS](#) [BAS 40-04 E6327](#)  
[BAS4007WH6327XTSA1](#) [BAS 70-04 E6327](#) [BAS 70-06 E6327](#) [BAT15099E6327HTSA1](#) [BAT 165 E6327](#) [BAT 60A E6327](#) [BAT 60B](#)  
[E6327](#) [BC 817SU E6327](#) [BC 817U E6327](#) [BC 817UPN E6327](#) [BC 846PN H6327](#) [BC 846UPN E6327](#) [BC 847PN H6327](#) [BCM 856S H6327](#)  
[BCP5416H6327XTSA1](#) [BCP55H6327XTSA1](#) [BCP5616H6327XTSA1](#) [BCR 108 E6327](#) [BCR 10PN H6327](#) [BCR 133W H6327](#) [BCR 141](#)  
[E6327](#) [BCR 141S H6327](#) [BCR 141W H6327](#) [BCR 162 E6327](#) [BCR 183W H6327](#) [BCR 185S H6327](#) [BCR 192 E6327](#) [BCR 198 E6327](#) [BCR](#)  
[35PN H6327](#) [BCR 523U E6327](#)