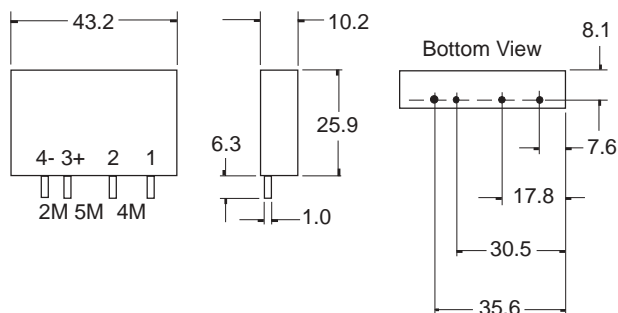


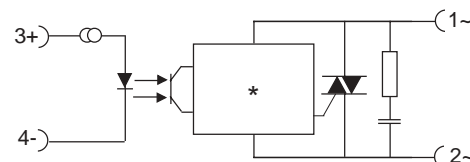
## SPECIFICATION

Switching Type	random	
Approvals	UL	
Output	triac	
Application Fields	inductive loads	
Input Circuit		
Control Voltage Range	V	<b>3 - 32 DC</b>
Control Current Max.	mA	14
Turn-off Voltage Min.	VDC	1
Input Resistance	$\Omega$	constant current
Output Circuit		
Load Voltage Range	V rms	<b>24 - 280 AC</b>
Peak-off-state Voltage	V <sub>drm</sub>	600
Off-state Leakage Current	mA <sub>eff</sub> Max.	5
Load Current Range	A rms	<b>0,05 - 3</b>
Surge Current 1 half wave	A peak	100
1 <sup>st</sup> for Fusing	A <sup>2</sup> s	50
On-state Voltage	V peak	1,6
Off-state (Static) dv/dt	V/ $\mu$ s	200
Snubber	$\Omega$ ; nF	47 ; 22
General Data		
Turn-on Time Max.	ms	0.1
Turn-off Time Max.	ms	11
Line Frequency Range	Hz	47 - 63
Isolation Voltage between:		
- Input / Output	V rms	4.000
- Input-output/base	V rms	-
Isolation Resistance	M $\Omega$	50
Operating Temperature	$^{\circ}$ C	-20 ... +80
Recommended Varistor	SIOV-S14 K230	



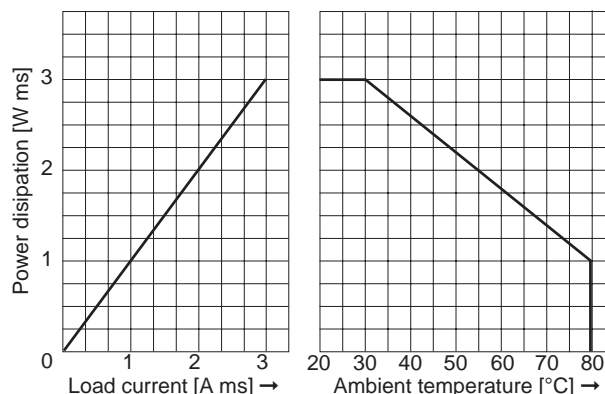
Drawings not to scale  
All dimensions in mm nominal

## Circuit Diagrams



\*R = Random switching

## Derating diagram WG A8 6D 03 R



### SOLID STATE RELAY

1-phase for AC loads and PCB mounting

PART NUMBER  
**WG A8 6D 03 R**

Rev. No.	Revision Note	Date	Signature
A	Web Site 2002	1-6-02	RG

As part of the company policy of continued product improvement, specifications may change without notice. Our sales office will be pleased to help you with the latest information on this product range and details of our full design and manufacturing service. All products are supplied to our standard conditions of sale otherwise agreed in writing.

## X-ON Electronics

Largest Supplier of Electrical and Electronic Components

*Click to view similar products for [Solid State Relays - Industrial Mount](#) category:*

*Click to view products by [Comus](#) manufacturer:*

Other Similar products are found below :

[6225XXASRS-DC3](#) [D2440-C](#) [H10CA4890](#) [D4875C](#) [D53TP50DH-10](#) [1395831-1](#) [BR312BY](#) [A-1326](#) [AQY210SXE01](#) [AQY221N2SYD01](#)  
[AQY414SXE01](#) [26532764](#) [H10CA4850](#) [H12CA4890VL](#) [RA2410-D06](#) [D1202F](#) [D53TP50-10](#) [W230E-1-12](#) [W230T-3-12](#) [W6125ASX-1](#)  
[W6225DSX-2](#) [W6240DSX-4](#) [W6240DTX-2](#) [1-1617030-3](#) [1-1617033-9](#) [1-1617033-7](#) [MS2-D2420](#) [MS2-D2430](#) [A-1440](#) [4-1617080-0](#)  
[RJ1P60V50E](#) [RN1F48I50](#) [70.362.1028.0](#) [7-1393030-8](#) [Z5.509.0828.0](#) [W230E-2-5](#) [G3RV-SR700-D AC110](#) [G3RV-SR500-AL AC100](#)  
[G3RV-SR500-D ACDC24](#) [G3RV-SR500-AL ACDC24](#) [G3RV-SR700-D ACDC24](#) [G3RV-SR700-AL ACDC24](#) [G3RV-SR500-D DC12](#)  
[G3RV-SR700-A ACDC24](#) [G3RV-SR500-A ACDC24](#) [2912138](#) [2912141](#) [SSRDAC10](#) [1613353](#) [1613349](#)