

# LEDs & INDICATORS

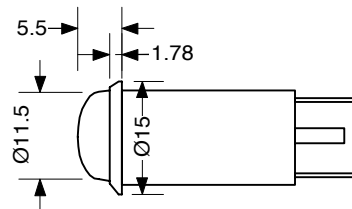
## 504 05 Series

- Snap fit body for panel thicknesses 0.5-3.5mm, panel cut-out 13mm diameter
- 6.3mm quick-connect terminals as standard
- Neons 240V 0.8mA, as standard
- Polycarbonate lens/body and brushed chrome bezel
- Maximum working temperature 105°C
- Red, green, amber lens colour options as standard



TYPE NO.	IND504	2	03	240	- T /	XXX
504 Series Indicator	504					
Lens Type	2					
6.3mm quick-connect terminal	03					
Neon 240V 0.8mA, red wire	240					
Transparent lens	T					
Lens colour Red	RED					
Lens colour Green	GRN					
Lens colour Amber	AMB					

### Dimensions



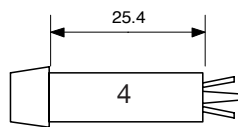
## 503 A Series

- Press fit body for various panel thicknesses, panel cut-out 8mm diameter
- Available with solder tags and wire termination
- Operating life 50,000 hours
- Polycarbonate lens/body and brushed chrome bezel
- Maximum working temperature 105°C
- Red, green, amber lens colour options as standard
- Custom wire lengths and specification to order
- Removable collar fits to rear of panel for improved retention



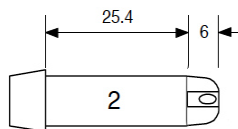
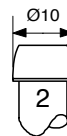
TYPE NO.	IND503	2	X	LED2	-XXX	- T /	XXX
503 Series Indicator	503						
Lens cylinder curved sides	2						
Stripped wire 280mm long	4						
Solder tag termination	2						
LED, neon-replacement, 240V 1mA	LED2						
Neon 125V 1mA, blue wire	125						
Neon 240V 0.8mA, red wire	240						
Transparent lens	T						
Lens colour Red	RED						
Lens colour Green	GRN						
Lens colour Amber	AMB						

### Body Dimensions



Stripped Wire

### Lens



Solder Tag

## X-ON Electronics

Largest Supplier of Electrical and Electronic Components

*Click to view similar products for [Camden manufacturer](#):*

Other Similar products are found below :

[CCTTR30RD](#) [412689X](#) [CTBP92VE/12R](#) [CTBP9350/12](#) [IND515205-240-T/GRN](#) [IND515205-240-T/RD](#) [CDIC00002](#) [CCTTBES](#)  
[C192SHAND](#) [RX510A](#) [RTM5006/16-PAT](#) [CTB9350/12FL](#) [CTBP9308/6AO](#) [CTBP9358/11](#) [CTBP9208/8](#) [CIME/M/BE2250SS](#)  
[CHH64E1BL](#) [CHD774004](#) [CHHBAT1BK](#) [CFTBN/2](#) [RTM5003/13-NAT](#) [CCB2S1/04](#) [CCM1S1/05](#) [CHDX7-224C](#) [CHDX8-221](#) [CHDX8-222](#) [CHDX8-231C](#) [CHDX810DD](#) [CHDX811DD](#) [CHDX814DD](#) [CTB9300/2A](#) [CTBP92VD/5R](#) [CTBP92VJ/8R](#) [CTSN431/12/M](#)  
[CTSN433/12/M](#) [CUABOX012](#) [CDIC00005](#) [CBRPH-BLK](#) [BIM2004/LUG-GY/GY](#) [RTM5005/15-WH](#) [RTM108-BLK](#) [CNMB/4/KIT](#)  
[CTB5050/5](#) [CTBP9358/10AO](#) [CTBP93VE/9](#) [CHH66C2GY](#) [CIM/9W-DMFS](#) [RTM5006/16-NC-BLK](#) [IND5032405-125-T/AMB](#) [CHTB4/3N](#)