

Bussmann series CEO BS88 Offset bolted tags



Product description

Eaton's Bussmann series range of British Standard A4 fuse links is specifically designed for the protection of general industrial applications e.g. power distribution, cable protection, motor protection.

Standard features

- Good peak let-through current limitation
- 1:1:6 Selective coordination ratio between "minor" and "major" fuse
- Suitable for motor protection if gM type selected
- Power loss values well within the limits of IEC 60269

Catalogue symbol:

- CEO (Amps)

Technical data:

- Rated voltage: 500 V a.c. (gG) / 415 V a.c. (gM)
- Rated current: 32 to 100 A
- Breaking capacity: 80kA
- BS reference: A4
- Class of operation: gG and gM

Standards/approvals:

- BS88
- IEC 60269
- Suitable for use in RoHS compliant applications

Fuse holder (ordered separately)

- RS100H (Red Spot)

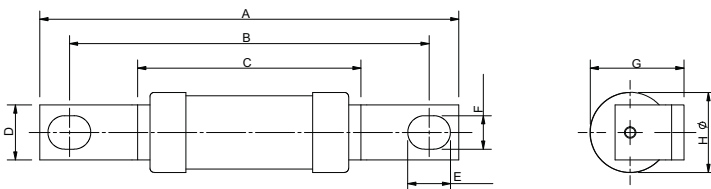
Packaging:

- MOQ 10

Table 1. Technical data

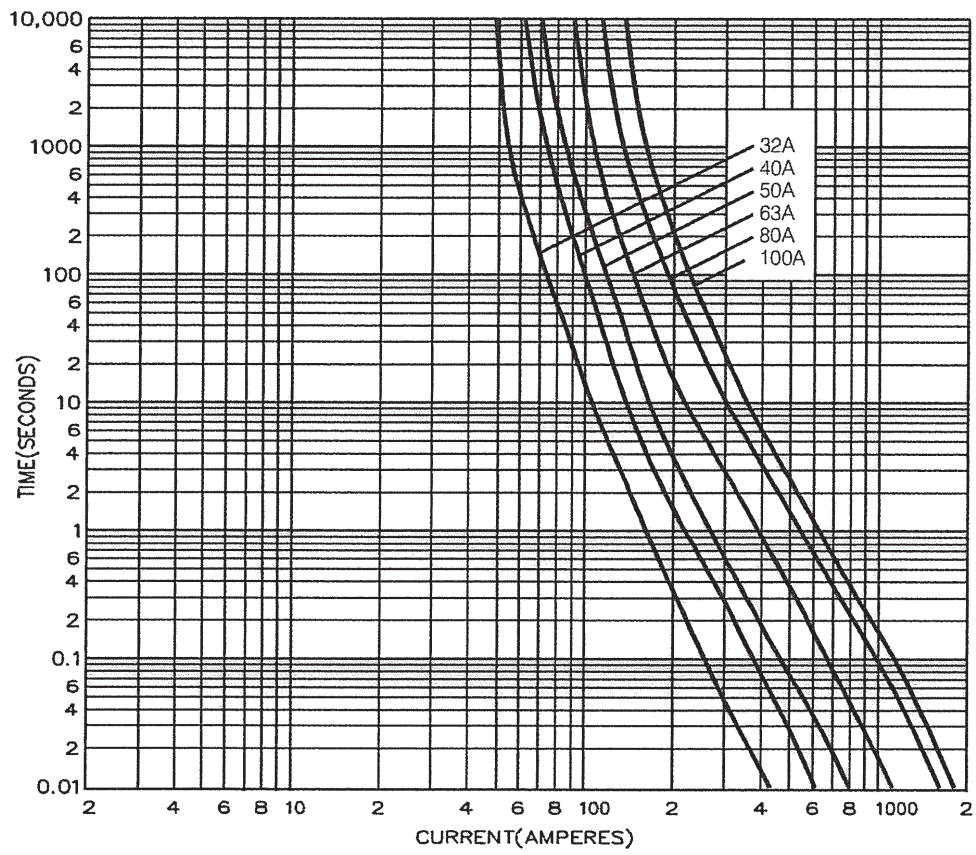
| Part number | Voltage | Current rating (amps) | Energy integrals I ² t (A ² S) | | Watts loss | Weight |
|-------------|------------|-----------------------|--|---------------|------------|--------|
| | | | Pre-arcing | Total at 415V | W | |
| CEO32 | 500 V a.c. | 32 | 1000 | 2760 | 3.5 | 75g |
| CEO40 | 500 V a.c. | 40 | 1400 | 3750 | 4.7 | 75g |
| CEO50 | 500 V a.c. | 50 | 3000 | 8350 | 4.9 | 75g |
| CEO63 | 500 V a.c. | 63 | 7000 | 18,800 | 5.6 | 75g |
| CEO80 | 500 V a.c. | 80 | 13,000 | 35,200 | 7.2 | 75g |
| CEO100 | 500 V a.c. | 100 | 25,000 | 76,500 | 8.5 | 75g |
| CEO100M125 | 415 V a.c. | 100M125 | 57,000 | 150,000 | 6.5 | 100g |
| CEO100M160 | 415 V a.c. | 100M160 | 72,500 | 190,000 | 5 | 100g |
| CEO100M200 | 415 V a.c. | 100M200 | 120,000 | 290,000 | 3.5 | 195g |

Dimensions - mm

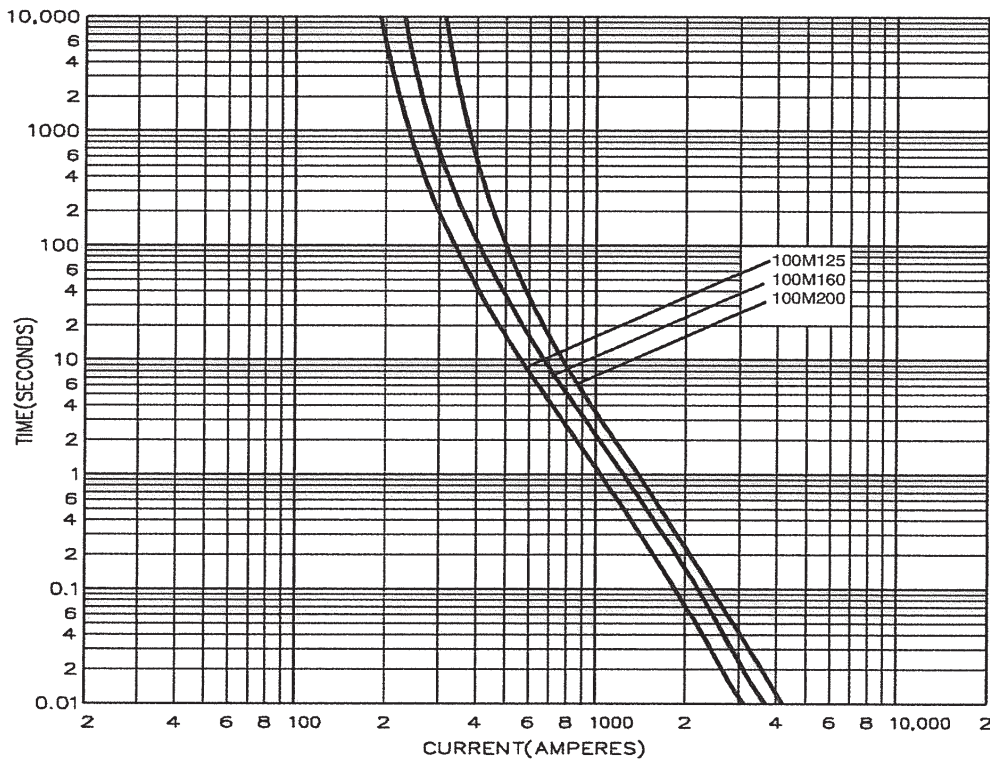


| Catalogue numbers | A | B | C | D | E | F | G | H |
|-------------------|-------|----|------|------|----|-----|------|------|
| CEO32-100 | 109.5 | 94 | 58.5 | 14.3 | 11 | 8.7 | 24.5 | 21 |
| CEO100M125-160 | 109 | 94 | 58 | 14.3 | 11 | 8.7 | 26.8 | 25.8 |
| CEO100M200 | 110 | 94 | 47 | 19 | 10 | 9 | 29.5 | 31 |

Time current curve - CEO32 to CEO100 A



Time current curve - CEO100M



Changes to the products, to the information contained in this document, and to prices are reserved; so are errors and omissions. Only order confirmations and technical documentation by Eaton is binding. Photos and pictures also do not warrant a specific layout or functionality. Their use in whatever form is subject to prior approval by Eaton. The same applies to Trademarks (especially Eaton, Moeller, and Cutler-Hammer). The Terms and Conditions of Eaton apply, as referenced on Eaton Internet pages and Eaton order confirmations.

Eaton
 EMEA Headquarters
 Route de la Longeraie 7
 1110 Morges, Switzerland
 Eaton.eu

© 2015 Eaton
 All Rights Reserved
 Publication No. 4115
 July 2015

X-ON Electronics

Largest Supplier of Electrical and Electronic Components

Click to view similar products for [Specialty Fuses](#) category:

Click to view products by [Eaton](#) manufacturer:

Other Similar products are found below :

[63NZ02GL](#) [714125](#) [722134](#) [80NH00GR-6](#) [FWH-200A](#) [FWP-32A14F](#) [FWP-50](#) [HBM-25](#) [12LCT](#) [12TDLSJ63](#) [REN-3](#) [15.5CAVH2E](#) [ECF-2](#)
[ECF-4](#) [ECF-6](#) [170M0213](#) [170M1314](#) [170M1369-D](#) [170M3809D](#) [BK/F02A-2AS](#) [BK/F02B-1A](#) [N-2-1/2](#) [N-3-2/10](#) [NITD2](#) [20D16](#) [20D16SC](#)
[20D27FB](#) [KAA-3](#) [KAB-2](#) [KAB-30](#) [KAJ-60](#) [KAW-3](#) [2D16](#) [LKN-125B](#) [16D27SB](#) [170M1564D](#) [170M2616](#) [170M2668](#) [170M4161](#)
[170M4241](#) [170M4699](#) [ESD63](#) [ABS-25](#) [ABS-30](#) [ABS-8](#) [ACF-15](#) [ACF-30](#) [ACO-30](#) [SSD10](#) [200NH1M](#)