



## PKE12 + trip block Standard 1-4A



Powering Business Worldwide™

Part no. PKE12/XTU-4

Article no. 121732

### Delivery programme

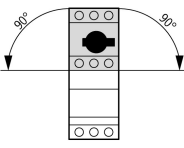
Single unit/Complete unit			Complete unit
Setting range of overload releases	$I_r$	A	1 - 4
Function			With overload release
Motor rating			
AC-3			
220 V 230 V	P	kW	0.75
380 V 400 V	P	kW	1.5
660 V 690 V	P	kW	3
Motor output/rated motor current			
<b>Motor power</b>	<b>AC-3 rated motor current</b>		
	220, 230 V	380, 400, 415 V	440 V
	240 V		500 V
			660, 690 V
P [kW]	I [A]	I [A]	I [A]
0.18	1.04		
0.25	1.4		
0.37	2	1.1	
0.55	2.7	1.5	
0.75	3.2	1.9	
1.1		2.6	
1.5		3.6	
2.2			
3			
			1.2
			1.5
			2.1
			2.9
			4
			1.1
			1.5
			2.1
			2.9
			3.8

### Approvals

Product Standards  
 UL File No.  
 UL CCN  
 CSA File No.  
 CSA Class No.  
 NA Certification  
 Specially designed for NA

UL508; CSA-C22.2 No.14-10; IEC60947-4-1; CE marking  
 E36332  
 NLRV  
 12528  
 3211-05  
 UL listed, CSA certified  
 No

### General

Standards			IEC/EN 60947, VDE 0660
Climatic proofing			Damp heat, constant to IEC 60068-2-78 Damp heat, cyclic to IEC 60068-2-30
Ambient temperature		°C	
Storage		°C	-40 - +80
Open		°C	-20 - +55
Enclosed		°C	-20 - +40
Mounting position			
Direction of incoming supply			as required
Degree of protection			
Device			IP20
Terminations			IP00
EN50274 busbar tag shroud			Finger and back-of-hand proof
Mechanical shock resistance half-sinusoidal shock 10 ms to IEC 60068-2-27		g	25
Altitude		m	2000
Terminal capacity screw terminals		mm <sup>2</sup>	
Solid		mm <sup>2</sup>	1 x (1 - 6) 2 x (1 - 6)

Flexible with ferrule to DIN 46228		mm <sup>2</sup>	1 x (1 - 6) 2 x (1 - 6)
Solid or stranded		AWG	18 - 10
Specified tightening torque for terminal screws			
Main cable		Nm	1.7
Control circuit cables		Nm	1

### Main conducting paths

Rated impulse withstand voltage	U <sub>imp</sub>	V AC	6000
Overvoltage category/pollution degree			III/3
Rated operational voltage	U <sub>e</sub>	V AC	690
Rated uninterrupted current = rated operational current	I <sub>u</sub> = I <sub>e</sub>	A	4
Rated frequency	f	Hz	40 - 60
Current heat loss (3 pole at operating temperature)		W	0.5
Lifespan, mechanical	Operations	x 10 <sup>6</sup>	0.05
Lifespan, electrical (AC-3 at 400 V)	Operations	x 10 <sup>6</sup>	0.05
Maximum operating frequency		Ops./ h	
Max. operating frequency		Ops./ h	60
Motor switching capacity		kA <sub>rms</sub>	
AC-3 (up to 690 V)		A	4

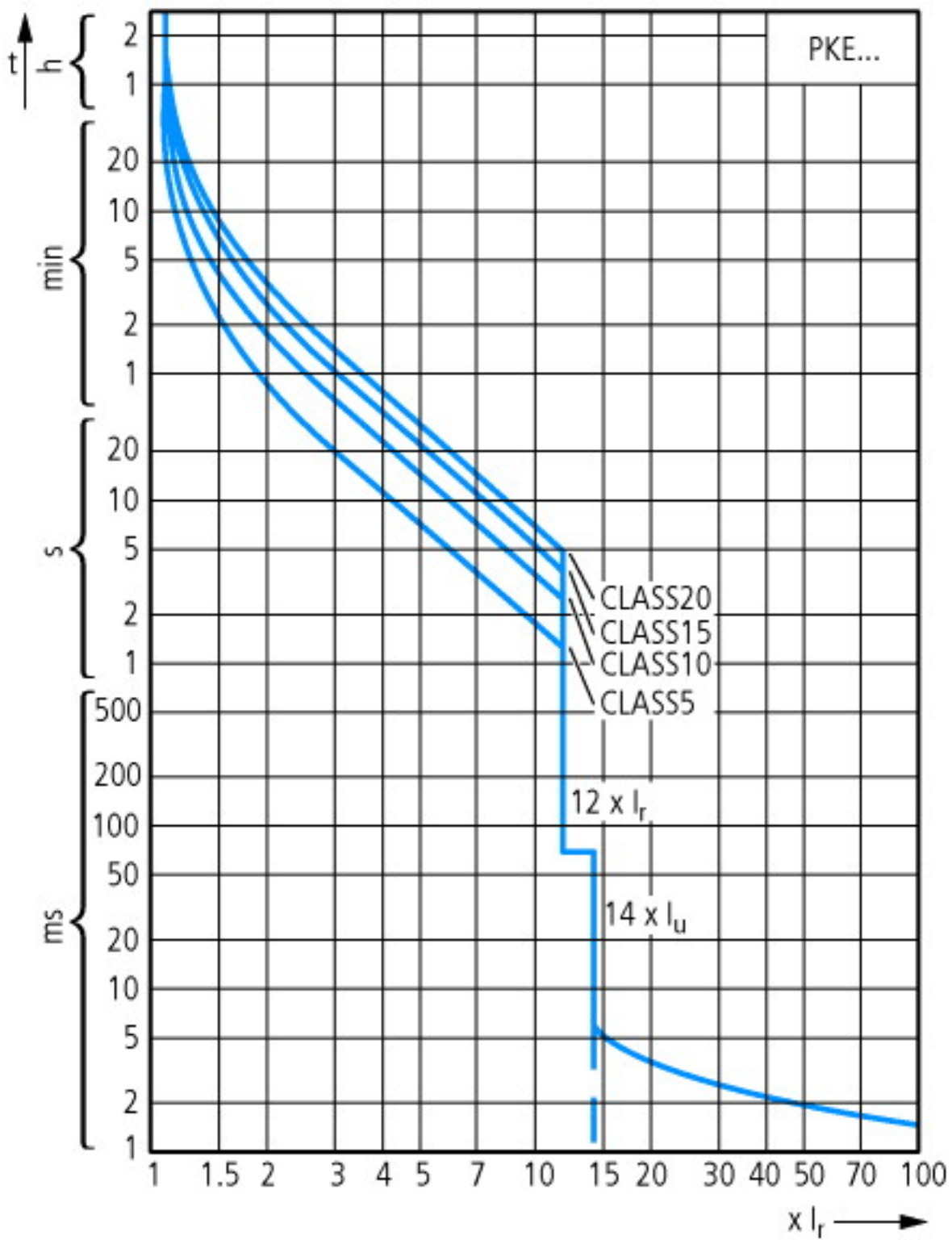
### Trip blocks

Temperature compensation		°C	-5 – 40 (to IEC/EN 60947, VDE 0660) -25 – 55 (operating range)
Temperature compensation residual error for T > 40 °C			$\pm$ 0.1%/K
Setting range of overload releases			0.25 - 1 x I <sub>u</sub>
Fixed short-circuit release			Basic device 14 x I <sub>u</sub> Trip block 12 x I <sub>p</sub> delayed approx. 60 ms
Short-circuit release tolerance			± 20%
Phase-failure sensitivity			yes

### Technical data ETIM 4.0

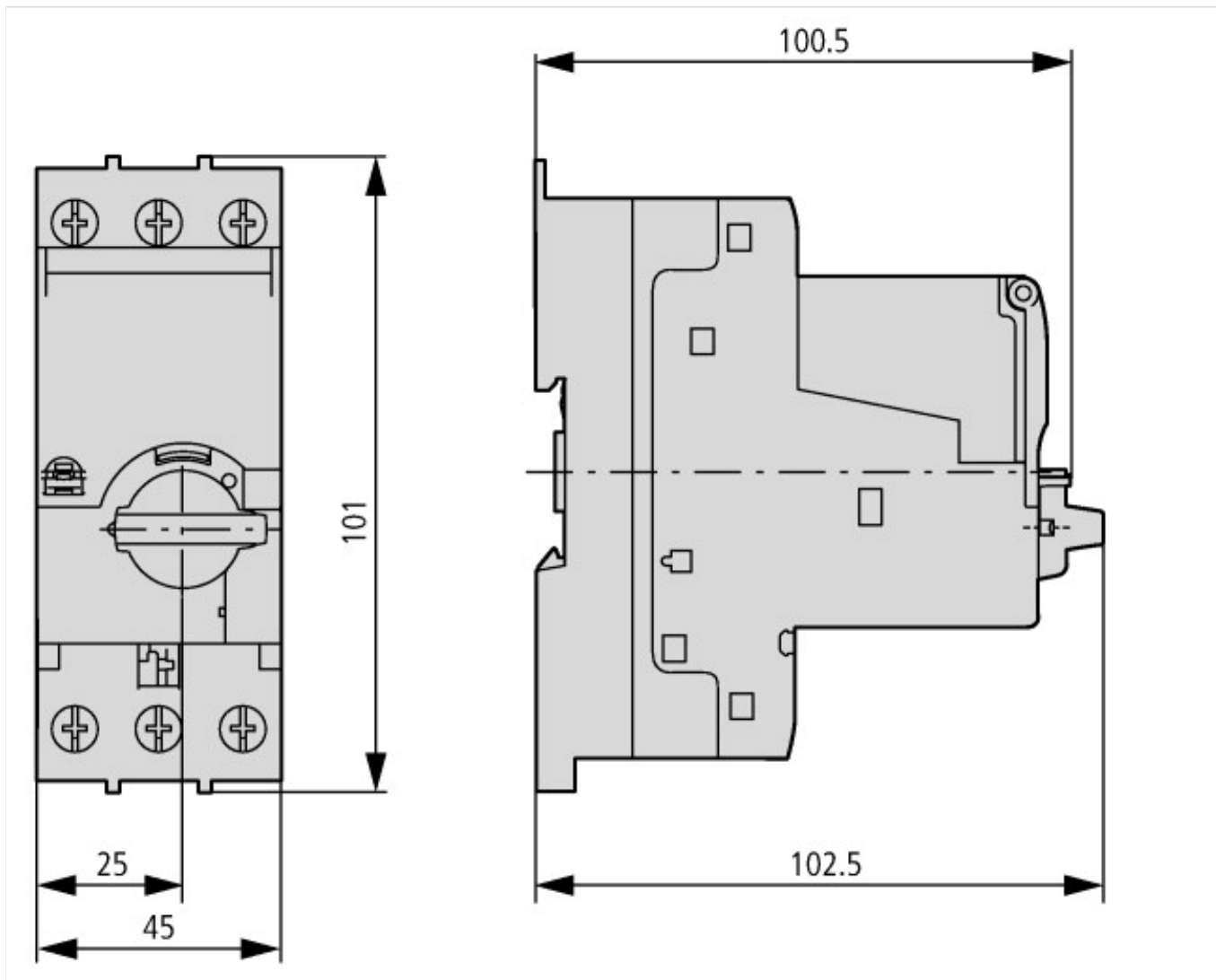
Rated operation power at AC-3, 400 V		kWh	1.5
With integrated auxiliary switch			No
Rated permanent current I <sub>u</sub>		A	4
With integrated under voltage release			No
Number of poles			3
Degree of protection (IP)			IP20
Connection type main current circuit			Screw connection

### Characteristics



Tripping characteristic curves, wide-range circuit breaker PKE

## Dimensions



#### Additional product information (links)

<b>IL03402019Z (AWA1210-2490) PKE motor-protective circuit-breaker with wide-range overload protection</b>	
IL03402019Z (AWA1210-2490) PKE motor-protective circuit-breaker with wide-range overload protection	<a href="ftp://ftp.moeller.net/DOCUMENTATION/AWA_INSTRUCTIONS/IL03402019Z2011_09.pdf">ftp://ftp.moeller.net/DOCUMENTATION/AWA_INSTRUCTIONS/IL03402019Z2011_09.pdf</a>
<b>IL03402023Z (AWA1210-2705) Trip block for solid-state motor-protective circuit-breaker</b>	
IL03402023Z (AWA1210-2705) Trip block for solid-state motor-protective circuit-breaker	<a href="ftp://ftp.moeller.net/DOCUMENTATION/AWA_INSTRUCTIONS/IL03402023Z2011_08.pdf">ftp://ftp.moeller.net/DOCUMENTATION/AWA_INSTRUCTIONS/IL03402023Z2011_08.pdf</a>
<b>MN03402004Z-DE/EN Motor-protective circuit-breaker PKE12 and PKE32; Overload monitoring of Ex e motors</b>	
MN03402004Z-DE/EN Motor-protective circuit-breaker PKE12 and PKE32; Overload monitoring of Ex e motors - Deutsch / English	<a href="ftp://ftp.moeller.net/DOCUMENTATION/AWB_MANUALS/MN03402004Z_DE_EN.pdf">ftp://ftp.moeller.net/DOCUMENTATION/AWB_MANUALS/MN03402004Z_DE_EN.pdf</a>
Motor starters and "Special Purpose Ratings" for the North American market	<a href="http://www.moeller.net/binary/ver_techpapers/ver953en.pdf">http://www.moeller.net/binary/ver_techpapers/ver953en.pdf</a>
Busbar Component Adapters for modern Industrial control panels	<a href="http://www.moeller.net/binary/ver_techpapers/ver960en.pdf">http://www.moeller.net/binary/ver_techpapers/ver960en.pdf</a>

## X-ON Electronics

Largest Supplier of Electrical and Electronic Components

*Click to view similar products for [Circuit Breaker Accessories](#) category:*

*Click to view products by [Eaton](#) manufacturer:*

Other Similar products are found below :

[CSC-403PS](#) [8T1-D-11A](#) [B151-7184-L](#) [NEB10](#) [8C1-C-721](#) [8T1-E-115](#) [8T1-E-275](#) [8T1-E-278](#) [4-1393247-8](#) [4-1393247-9](#) [506-11315-001](#)  
[3803221](#) [3803231](#) [NEB6](#) [X10506BF](#) [NES](#) [9-1393249-0](#) [802-ESB50UL489](#) [3RV2011-1CA15](#) [607.5689.127](#) [30.329](#) [CA707/TS/01](#)  
[11-32-2733](#) [X10508BF](#) [X22261102](#) [975090700](#) [CX2.5/4/O](#) [975090701](#) [PS-2P](#) [Y30019003](#) [C-TEC1225 P](#) [PS-1006](#) [618.6335.069](#)  
[975455700](#) [BAC03](#) [930727103](#) [934097101](#) [ZG20-1](#) [934097100](#) [JX2.5/4](#) [KEM380CUL](#) [CC848756916](#) [JX2.5/6](#) [JX2.5/5](#) [HSP6/10U](#)  
[DMRBU BLACK BOX](#) [DB16/BU](#) [DB16/BL](#) [CM2.5S2](#) [973604100](#)