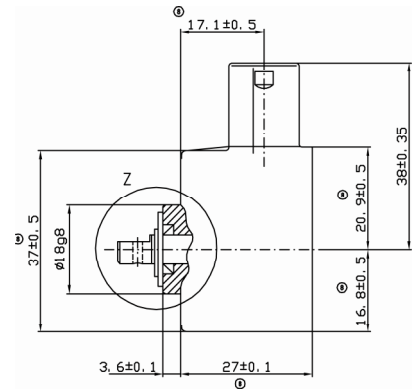
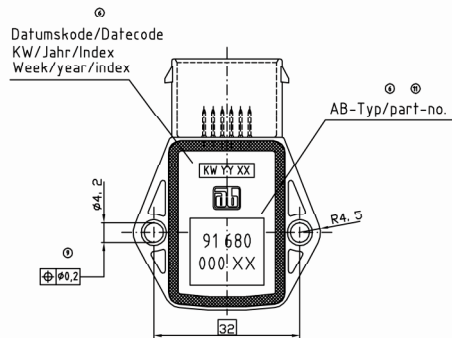


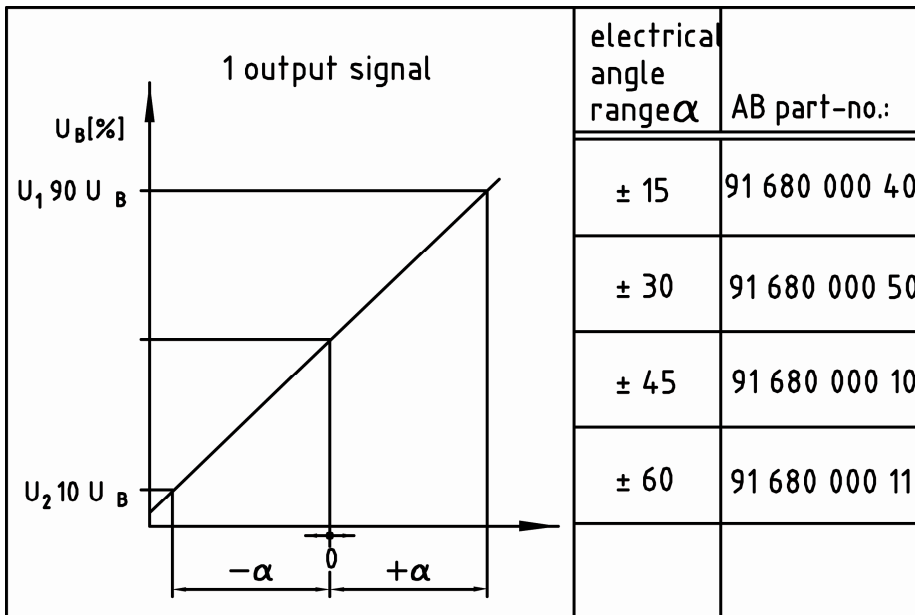
**WINKELSENSOR / Angle Sensor (Hall)**

**91680xxxxx**

<b>VERSORGUNG</b> Supply	5 ± 0,25 V	<b>TEMPERATURBEREICH</b> Temperature Range	- 40°C bis + 120°C
<b>AUSGANGSSIGNAL</b> Output signal	Analogic, 1 Signal	<b>DICHTIGKEITSGRAD</b> Sealing grade	Schutzart nach DIN 40050-9 Gehäuse IP6K6 Steckverbinder IP6K9K



**WINKELBEREICH**  
Angle range (degrees)

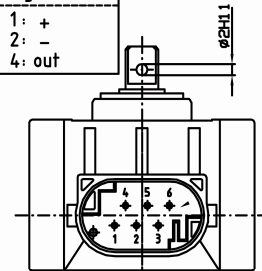


**STECKER**  
Connector

Pinbelegung  
connecting chart

Signal 1

- 1: +
- 2: -
- 4: out



Mate Connector:

MQS-Gegenstecker/connector housing  
AMP-Nr. 1-967616-1

Steckerkontakt/terminals  
AMP-Nr. 0-096 3727-2

Blindstopfen/blind plug  
AMP-Nr. 0-096 7056-1

Einzelleiterabdichtung/core seal  
AMP-Nr. 0-096 7067-1



## **X-ON Electronics**

Largest Supplier of Electrical and Electronic Components

*Click to view similar products for [ab elektronik](#) manufacturer:*

Other Similar products are found below :

[3121205903](#) [ABW1 500R](#) [96770 10 900](#) [3114304000](#) [3114306004](#) [94099 00 030](#) [ABW1 10K](#) [96770 10 950](#) [9670500135](#) [3114307999](#)  
[3114307602](#) [ABW1 25K](#) [94099 00 012](#) [ABW1 5K](#)