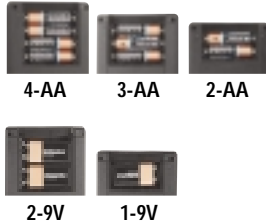


90 Series LCD Case

A very versatile LCD enclosure with LCD display window. Recessed area for membrane keypad. Battery options include: 2AA, 3 AA, 4AA, 1 or 2-9V and No battery.

Battery Options:

- No Battery
- 2 AA cells
- 3 AA cells
- 4 AA cells
- 1 or 2- 9V cells



Color Options:

- PC Bone
- Black
- Custom color matching

Standard Material Options:

- ABS UL 94 VO (fire retardant)
- ABS UL 94 HB standard

Dimension Options:

- (L x W x H)
- 5.7 x 3.6 x 0.80*
- 5.7 x 3.6 x 1.10*
- 5.7 x 3.6 x 1.25
- *call for part number

LCD Window size	2"-LC modules 2x20			2"-LC modules 2x20		
	2x20	4x20	2x20	4x20	2x20	4x20
Case dimensions	1.79 x 0.70"	1.76 x 0.36"	1.76 x 0.69"	1.79 x 0.70"	1.76 x 0.36"	1.76 x 0.69"
Description	Part No.	Part No.	Part No.	Part No.	Part No.	Part No.
LCD case with NO Battery Compartment	91-42-NO	92-42-NO	93-42-NO	91-43-NO	92-43-NO	93-43-NO
LCD case with 2AA Battery Compartment	91-42-2A	92-42-2A	93-42-2A	91-43-2A	92-43-2A	93-43-2A
LCD case with 3AA Battery Compartment	91-42-3A	92-42-3A	93-42-3A	91-43-3A	92-43-3A	93-43-3A
LCD case with 4AA Battery Compartment	91-42-4A	92-42-4A	93-42-4A	91-43-4A	92-43-4A	93-43-4A
LCD case with 9V Battery Compartment	91-42-9V	92-42-9V	93-42-9V	91-43-9V	92-43-9V	93-43-9V
LCD case with 2-9V Battery Compartment	91-42-29V	92-42-29V	93-42-29V	91-42-29V	92-43-29V	93-43-29V

Note: for black add BL to part number, for bone add BO to part number

ACCESSORIES

Protective Boot w/Integrated tilt bar	Light Blue	Dark Blue	Bright Orange	Bright Yellow	Red	Black
	Part No.	Part No.	Part No.	Part No.	Part No.	Part No.
	90-RBT-LBL	90-RBT-DBL	90-RBT-ORG	90-RBT-YEL	90-RBT-RED	90-RBT-BLK
Battery Clip Sets	2AA set	3AA set	4AA set	6AA set	9V set	
	Part No.	Part No.	Part No.	Part No.	Part No.	
	BAT-2A	BAT-3A	BAT-4A	BAT-6A	BAT-9V90	
Belt Clips	Bone	Black				
	Part No.	Part No.				
	CLP-BONE	CLP-BLK				
Expander Panel	Black Panel	Bone Panel				
	Part No.	Part No.				
(increases case height by 0.5 inches)	90-EXPBLK	90-EXPBONE				

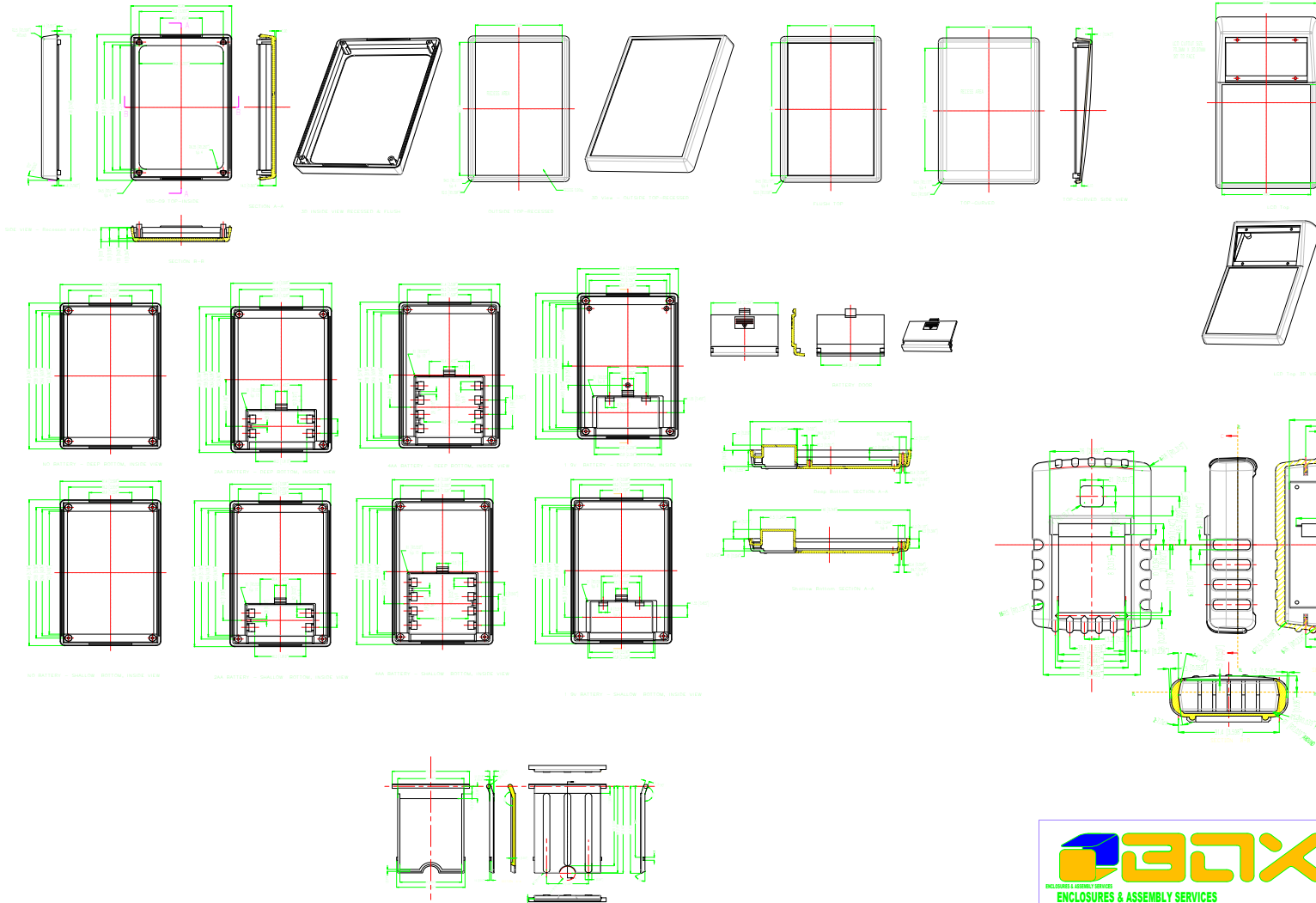


ENCLOSURES & ASSEMBLY SERVICES
ENCLOSURES & ASSEMBLY SERVICES

ENCLOSING ELECTRONICS ONE BOX AT A TIME

BOX ENCLOSURES,
28835 N. HERKY DRIVE
LAKE BLUFF, IL 60044
WWW.BOXENCLOSURES.COM

TEL: 847-932-4700



THIS DRAWING IS THE PROPERTY OF AND MAY EMBODY PROPRIETARY INFORMATION OWNED BY X-Box Enclosures. IT IS PROVIDED UNDER A CONFIDENTIAL RELATIONSHIP FOR A SPECIFIC PURPOSE. THE RECIPIENT AGREES TO USE IT ONLY FOR SUCH PURPOSE AND RETURN IT TO X-Box Enclosure UPON REQUEST.

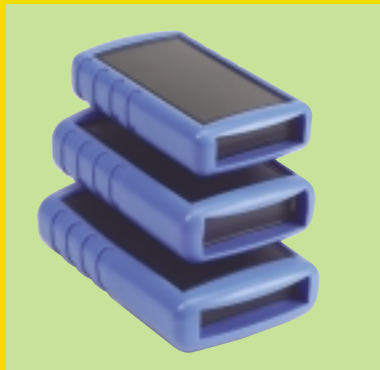
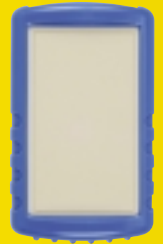
ENCLOSURES & ASSEMBLY SERVICES
ENCLOSURES & ASSEMBLY SERVICES

Title: 90-SERIES

Material:	TOL
Finish:	all dim unless ot
Proj.	x .x .xx ANG

New for 2004

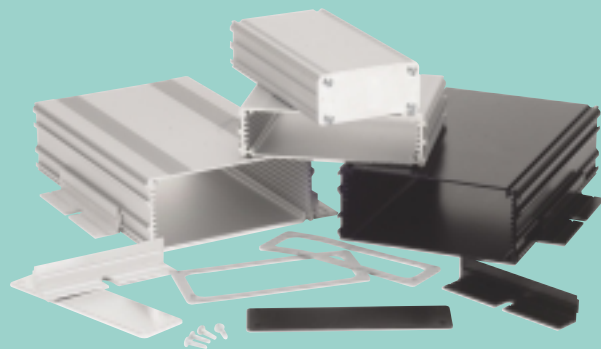
Featuring eight new product lines with protective rubber boots.



NEMA 4 / IP65 Enclosures



Extruded Aluminum



Protective Boots

NEW!



LCD Enclosures

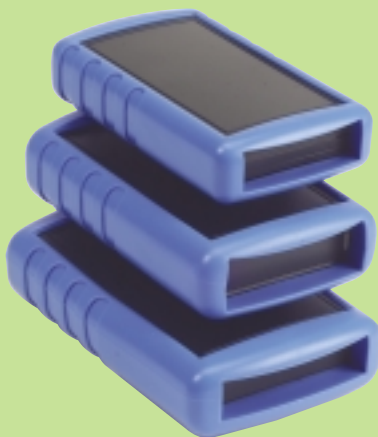


ENCLOSURES & ASSEMBLY SERVICES

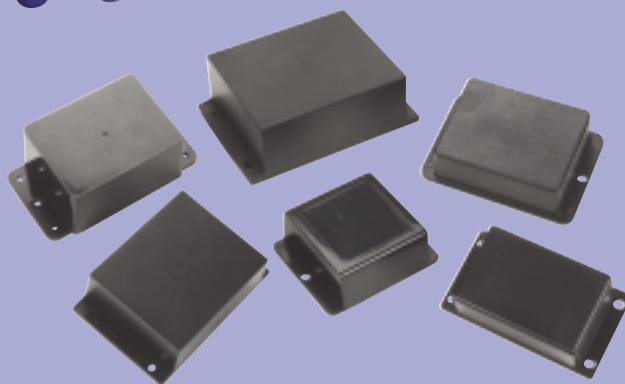
Enclosing electronics one box at a time.



Handheld Enclosures



Flange Cases



See back page for International Distribution Network

X-ON Electronics

Largest Supplier of Electrical and Electronic Components

Click to view similar products for [box enclosures manufacturer](#):

Other Similar products are found below :

[101-42-NO-R-BO](#) [B2-080SI](#) [40-RBT-BL](#) [B2-160SI](#) [40-12-NO-F-BL](#) [40-RBT-BLK](#) [40-12-9V-R-BO](#) [55-RBT-BL](#) [B4-220BK](#) [SK1](#) [40-12-9V-F-BO](#) [90-RBT-BL](#) [101-42-4A-R-BL](#) [SK4](#) [SBH-9V-BK](#) [100-42-NO-F-BL](#) [40-RBT-YEL](#) [21G-BK](#) [55-12-9V-R-BL](#) [SBH-4AA-BK](#) [55-12-2A-R-BL](#) [ASK71](#) [B1-120BL](#) [B3-080RD](#) [EC2-BK](#) [WTS127S](#) [ASK70](#) [100-42-9V-F-BL](#) [55-RBD-DBL](#) [ASK74](#) [MBS107](#) [B4-080BK](#) [101-42-9V-R-BL](#) [ASK72](#) [B3-220BK](#) [B1-080SI](#) [B3-080BL](#) [B4-160BL](#) [B2-080BL](#) [101-42-4A-R-BO](#) [B2-160BK](#) [90-RBT-DBL](#) [B4-160BK](#) [MBM107](#) [PBS107](#) [SBH-29V-BK](#) [PBS109](#) [MBM109](#) [PBM107](#) [PBL109](#)