

Features

- Suitable for FOC and coaxial contacts acc. to DIN 41 626
- Using of guiding pins (male and female) is imperative (see chapter 40 in the main catalogue „Industrial Connectors Han®“).

Contact arrangement

according to following matrix

Contacts	Male insert (M) 09 14 004 4501	Female insert (F) 09 14 004 4512
Coaxial contacts	09 14 000 62xx	09 14 000 61xx
F.O. contacts	20 10 xxx 421x	20 10 xxx 422x

Coaxial cables (group 2)

Wires	Shell ∅ mm	Internal wire ∅ mm	Attenuation db/100 m at		
			100 MHz	200 MHz	800 MHz
50 Ω					
RG 174 / U	2.5	0.48			84
RG 188 A / U	2.6	0.54	29	40	
RG 316 / U	2.5	0.54		40	
75 Ω					
RG 179 B / U	2.55	0.3		41	
RG 187 A / U	2.7	0.3		41	

Technical characteristics

Specifications DIN EN 60 664-1
 DIN EN 61 984

Inserts

Number of contacts 12
 Insulation resistance $\geq 10^{10} \Omega$
 Material polycarbonate
 Limiting temperatures -40 °C ... +125 °C
 Flammability acc. to UL 94 V 0
 Mechanical working life
 - mating cycles ≥ 500

Contacts

Coaxial contacts

Material copper alloy
 Surface
 - hard-gold plated demand level 2
 Impedance 50 Ω / 75 Ω
 Contact resistance
 - Internal wire $\leq 10 \text{ m}\Omega$
 - Outer conductor $\leq 3 \text{ m}\Omega$
 Rated current 1.5 A
 Rated voltage 50 V

F.O. contacts

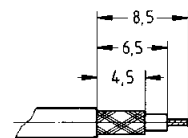
Fibre type glas fibre (GI)
 Attenuation < 1.5 dB

F.O. contacts

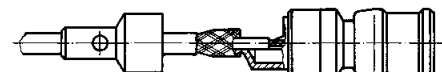
Fibre type polymer Optical Fibre (POF)
 Attenuation < 2.5 dB

Assembly instructions

Stripping de- scription



Assembly details for coaxial contacts



Crimp barrel solder

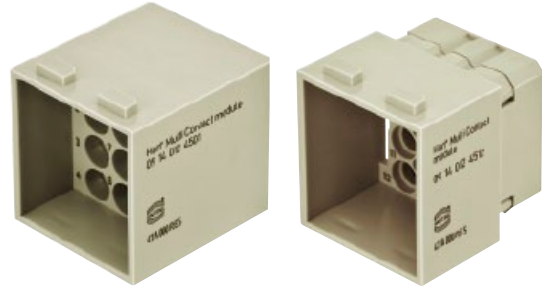
Solder temperature approx. 300 °C
 Solder duration approx. 2 s

Due to the closed entry design of female insert the upper part has to be removed by screw driver before extracting the contacts.

Number of contacts

4

Available by July 2011



Identification	Part number		Drawing	Dimensions in mm
	Male insert (M)	Female insert (F)		
Multicontact module acc. to DIN 41 626 Order contacts separately	09 14 012 4501	09 14 012 4512		Contact arrangement view termination side

Identification	Impedance	Part number		Drawing	Dimensions in mm
Coaxial contacts acc. to DIN 41 626* Solder / crimp contact 	50 Ω 75 Ω	09 14 000 6211 09 14 000 6221	09 14 000 6111 09 14 000 6121		For cable group 2 flexible wires
F.O. contacts acc. to DIN 41 626* for SI fibre (HCS®) 200/230 μm for GI fibre 50/125 μm or 62.5/125 μm ceramic ferrule for 1 mm plastic fibre 		20 10 230 4211	20 10 230 4221		

* Usage of guiding pins is imperative (see chapter 40 in the main catalogue „Industrial Connectors Han®“).

X-ON Electronics

Largest Supplier of Electrical and Electronic Components

Click to view similar products for [Terminals](#) category:

Click to view products by [HARTING](#) manufacturer:

Other Similar products are found below :

[HT-13-10](#) [71M-250-32-NB](#) [01-2065-1-0216](#) [00581P0075](#) [M10-10RX](#) [M10BCK](#) [60205-1](#) [604200-1](#) [60598-1-CUT-TAPE](#) [60617-1-C](#) [60873-1](#) [M14-516R/SK](#) [M14-6RSX](#) [M18-10FLX](#) [M18-8FBX](#) [M18-8R/LX](#) [M18BCK](#) [61314-6-C](#) [61-S](#) [61-SN-A](#) [62149-1](#) [62-NBM-A](#) [63-S](#) [640179-1](#) [640917-2-CUT-TAPE](#) [6501550002](#) [66107-2-C](#) [66107-4-C](#) [696683-1](#) [696834-1](#) [696861-1](#) [696931-1](#) [696999-1](#) [M8-516RK](#) [M86700006](#) [MA250DMFMX-A](#) [701-2007](#) [701-2307](#) [701-7761-03](#) [70F-110-32-PB](#) [718-N-A](#) [71M-187-20-NBL](#) [71M-250-32-NBL](#) [72F-187-20-NBL](#) [72M-250-32-NBL](#) [7310](#) [73F-250-32](#) [73F-250-32-NBL](#) [73F-250-32-NL](#) [F-1M](#)