

Customer : ROXBURGH ELECTRONICS LIMITED

No. AD-96-1017

Date : Jan. 29, 1996

Attention: _____

Your ref. No: _____

Your Part. No: 211127

SPECIFICATIONS

ALPS :

MODEL _ **RK09711110K** _____

F.E.C. No: 642-897

Sample No. : G0444854M

RECEIPT STATUS
RECEIVED
By. Date _____
Signature _____
Name
Title

ALPS ELECTRIC CO., LTD.

HEAD OFFICE
1-7, YUKIGAYA-OHTSUKA-CHO,
OHTA-KU, TOKYO 145 JAPAN

DSG'D *M. Asama*

APP'D *M. Endo*

ENG. DEPT. DIVISION

Sales _____

SPECIFICATIONS

1. THIS SPECIFICATIONS APPLY TO RK0971110 POTENTIOMETERS.

2. CONTENTS OF THIS SPECIFICATIONS.

G044854M
K091K0001

3. MARKING

MARKING ON ALL UNITS
DATE CODE RESIST. VALUE TAPER

4. REMARKS

FURNISH PACKAGE
NUT: 1, WASHER: 1

ELECTRICAL

Single shaft (R1)

- 1. Total resistance: 10 KΩ 20%
- 2. Rated power: 0.05W
- 3. Rated voltage: Please refer to the attached.
- 4. Resistance taper: Please refer to the attached.
- 5. Tap position: _____
- 6. Tap resistance between terminals: _____
- 7. Residual resistance between terminals: 1&2, 2&3 : 20Ω max.
- 8. Sliding noise : (Measured by JIS C 6443) Less than 100mV
- 9. Insulation resistance : More than 100 MΩ at 250V D.C.
- 10. Withstand voltage: 300V A.C. for 1 minute.
- 11. Gans error : _____

- 12. Switch rating: (Resistor load)
- 13. Switch contact resistance:

14. Circuit: _____

MECHANICAL

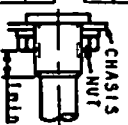
- 1. Total rotational angle : 300° ±5°
- 2. Rotational torque: (Rotational speed 60/sec.) 20-250 gf.cm.
- 3. Stopper strength : 5 kgf.cm min.
- 4. Resistance to soldering heat : Please refer to the attached.
- 5. Bushing nut tightening strength : Tightening torque to be no greater than 10 kgf.cm. Pay attention otherwise the strength may not be assured.
- 6. Push / pull strength : No damages with an application of Push or pull force 10 kgf for 10 sec.
- 7. Shaft wobble : (Apply the moment of 500gf.cm at the point of 30mm from mounting surface) 0.4 XL/30mm p-p max. (L:Shaft length) (If the shaft length is less than 30mm, the value shall be calculated proportionally.)
- 8. Operation force of shaft: _____
- 9. Click position : _____
- 10. Click torque: _____
- 11. Rotation play at the click position: _____
- 12. Contact arrangement : _____
- 13. Switching angle : _____
- 14. Switch operation torque : _____

ENDURANCE

- 1. Rotational life : More than 15,000 cycles.

NOTES

- 1. The items except above mentioned items shall meet or exceed JIS C 6443.
- 2. This type is protected against sulfides.



ALPS ELECTRIC CO., LTD.

TITLE SPECIFICATIONS

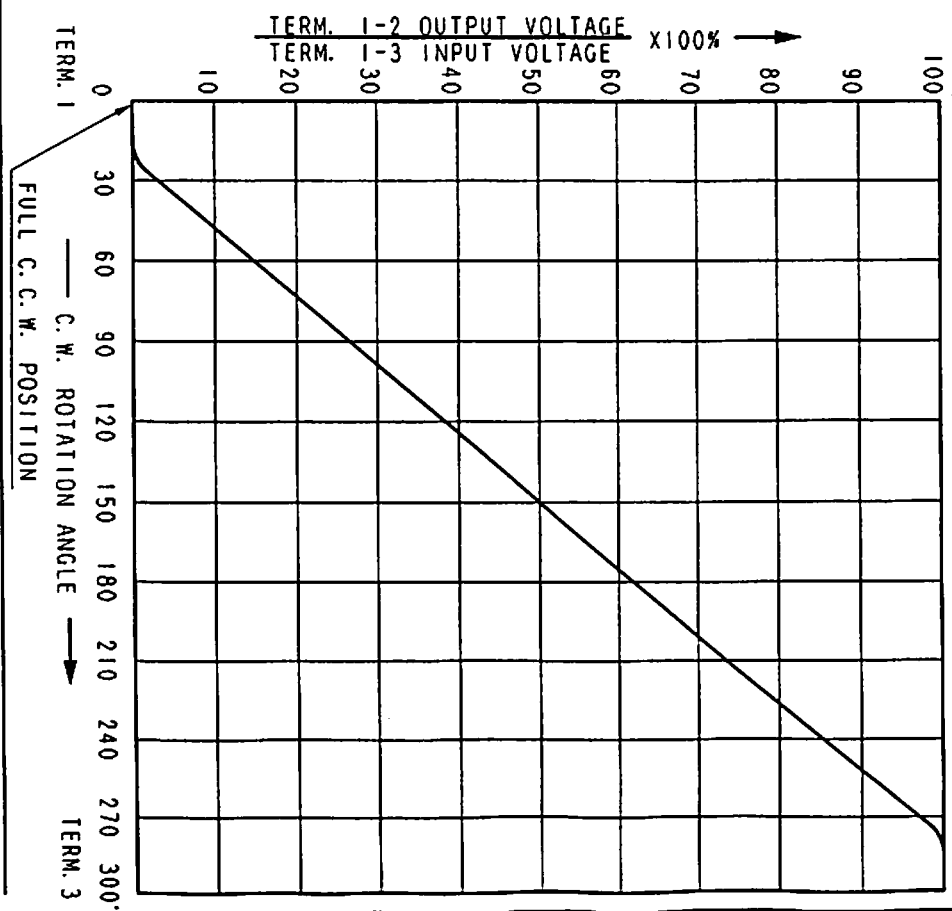
SYMB	DATE	APPR. (CHKD) (DSGD)
		APPR. <i>R. Akasaka</i> (CHKD. <i>M. Endo</i>) (DSGD. <i>T. Yamazaki</i>)

NO. C0444854M



ALPS ELECTRIC CO., LTD
1-7 YUKIGAYA OTSUKA-CHO OTA-KU TOKYO JAPAN

(R1)



AT 150° C.W. SHAFT ROTATION FROM FULL C.C.W. POSITION VOLTAGE PERCENT SHALL FALL WITHIN THE LIMITS OF 40-60 PERCENT.

Rated voltage :
The rated voltage shall be the voltage of D. C. or A. C. (commercial frequency, effective value) corresponding to the rated power (dissipation), and be obtained from the following formula. When the obtained rated voltage exceeds the maximum working voltage given in the following, however, the maximum working voltage of the following shall be the rated voltage.

$$E = \sqrt{P \cdot R} \quad (V)$$

Where E : Rated voltage (V)
P : Rated power (dissipation) (W)
R : Nominal total resistance (Ω)

Maximum working voltage : 50 V A. C. , 10 V D. C.

Resistance to soldering heat
There shall be no evidence of poor contact between resistance element and terminals, or any physical damages as a result of soldering.

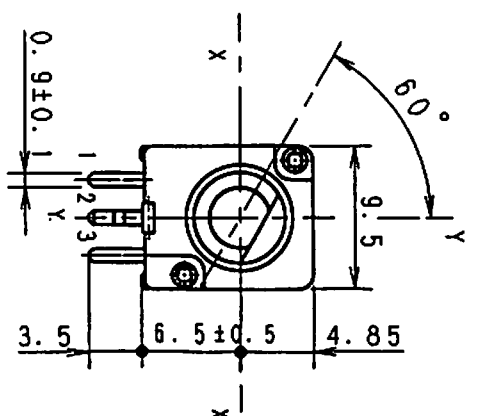
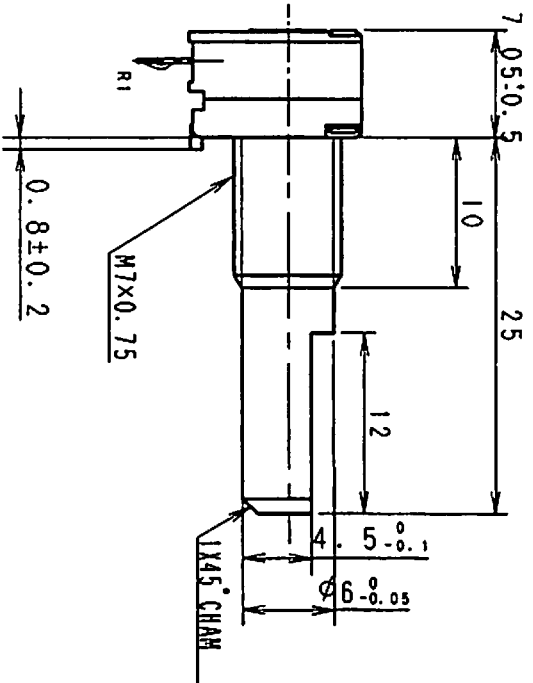
- Dip soldering
Condition of soldering :
Soldering shall be certified with following condition.
Substrate to be soldered :
Copper clad laminated phenol board in one surface of 1.6 mm thickness.
Solder flux :
Flux of 0.82 specific weight in bubbling type solder fluxcoating apparatus shall be used and bubbling surface height shall be defined substantially as half thickness of substrate.
Flux shall not flow up on substrate surface.
Preheating :
Surface temperature of substrate shall be settled within 100° C in 2 minutes.
Dip soldering :
To be performed in 3 seconds within 260° C.
- Please use the above process only 1 or 2 times.
- Manual soldering
To be performed in 3 seconds within 300° C.

SYND	DATE	APPD	CHRD	OSGD	NAME
		Apr. 21 '94	Apr. 23 '94	Apr. 23 '94	DOCUMENT NO
		R. Mizuta	M. Ito	I. Taniuchi	

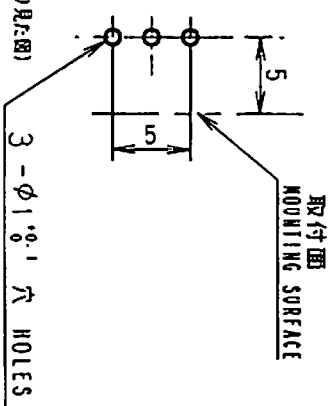
SYND	DATE	APPD	CHRD	OSGD	NAME
		Apr. 23 '94	Apr. 23 '94	Apr. 23 '94	RESISTANCE TAPER
		I. Mizuta	S. Sasaki	K. Shirai	GO 4 4 4 0 5 4 M

K09-801

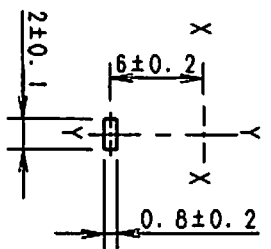
NOTES
 BUSHING MATERIAL ----- ZINC ALLOY DIE CASTING
 SHAFT MATERIAL ----- ALUMINUM



LOCATING LUG DETAIL
 シャフト止め詳細図



端子取付寸法図 (挿入側より見た図)
 (経路差±0.1)
 MOUNTING HOLE DETAIL
 (TOLERANCE±0.1)
 VIEWED FROM
 MOUNTING SIDE



上図は軸を反時計方向に
 回し切った状態を示す。
 SHAFT SHOWN IN
 FULL CCW POSITION

ALPS ELECTRIC CO., LTD.

指定なき部分の許容差 TOLERANCE UNLESS OTHERWISE SPEC	
LM10	±0.3
10 <math>\leq L < 100</math>	±0.5
100 $\leq L$	±0.8
角度	±5°
ANGULAR DIMENSION	

SYMB	DATE	APPD	CHKD	OSGD

DSGN. 設計者 設計日	SCALE
T. YAMAGUTI '94-05-23	X
CHKD.	TITLE
M. ENDO '94-05-23	9形1軸連 VR 取付図
APPD.	UNIT
R. ARASAWA '94-05-23	M M
	DOCUMENT NO.
	K091K0001

X-ON Electronics

Largest Supplier of Electrical and Electronic Components

Click to view similar products for [alps manufacturer](#):

Other Similar products are found below :

[EC11E1814404](#) [EC12E1220301](#) [SCZA2A0100](#) [SKQRACE010](#) [SLLB310300](#) [SLLQ110100](#) [SPEE120100](#) [HMSZS1001A](#) [SPVT130101](#)
[RK08H11100UD](#) [SSSU124900](#) [EC11J0924802](#) [SPVF110100](#) [SCZA1A0300](#) [SLLB310500](#) [SLLQ120100](#) [SDKZ1R0200](#) [SPVQ811006](#)
[PTMBL1912A](#) [RK09K111F15C0B104](#) [RK09K1130D62](#) [RK50114A0001](#) [SCDG2A0101](#) [SPEF120100](#) [SSSS928500](#) [SSGM680200](#)
[EC11E09244BS](#) [SKHLLAA010](#) [UE200013](#) [SCJB1B0301](#) [RD1010030A](#) [EC10E1260507](#) [RK27112A0-F20-C0-V503](#) [RK09L124000Z](#)
[RD7081015A](#) [RDCC010002](#) [RK09L1120A2S](#) [SRBM140700](#) [RS6011Y50K](#) [RK0972210-F30-31-B103](#) [RD1Y50010A](#) [RD1030211A](#)
[SSSS213800](#) [EC35A0930401](#) [RS30H11AA009](#) [SPVQ820502](#) [RK14K12C0A0T](#) [RS45112-0620-C0-P1-A203](#) [RK09K1110B1V](#)
[RK11K1140A3L](#)