

DIN RAIL BOXES

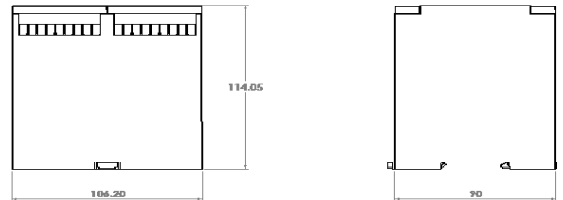
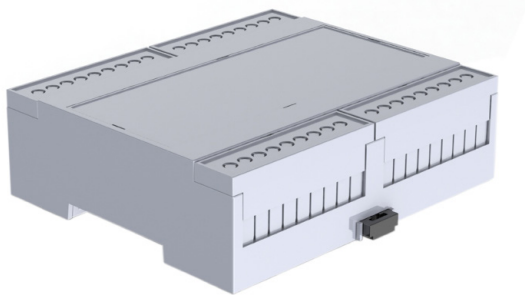
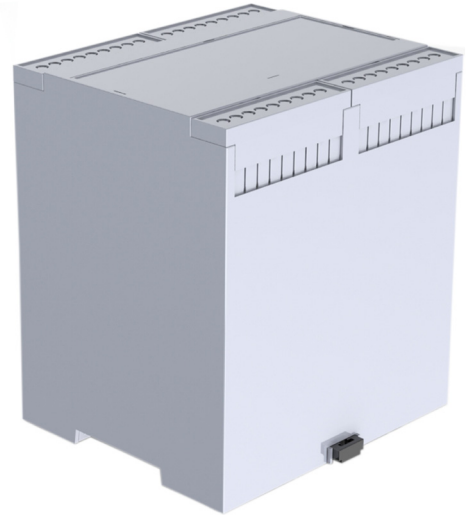
DIN Rail Instrument Boxes

Low Profile and Deep Profile DIN Rail Mount Instrument Boxes

- Designed for 35mm DIN Rail Mounting
- DIN Clips can also be used for surface mounting the housing
- Multiple snap-in PCB positions available (horizontal & vertical)
- X2 pillars in the base for screw fixing PCB
- Snap-fit Top Covers (See CNMB)
- Snap-fit Terminal Guards (See CNMB)
- Open Top and Solid Top versions available
- Low Profile and Deep Profile variants
- Enclosure base offers isolation from DIN rail
- Customisation options include cutouts, holes & vents
- Surfaces, Covers and Terminal guards easily customised and printed
- Moulded in UL94-V0 Polycarbonate

SPECIFICATION

Material	Base & Body- UL94-V0, Polycarbonate Clips- POM
Standard colours	RAL 7035
Standard unit includes	Body, base & clips
Accessories	Terminal Guards and Covers (See CNMB)



PART NO.	DESCRIPTION
CDIB/6/L2	CDIB, Size 6, Low Profile, Open Top, Open Sides
CDIB/6ST/L2	CDIB, Size 6, Low Profile, Solid Top, Open Sides
CDIB/6/D2	CDIB, Size 6, Deep Profile, Open Top, Open Sides
CDIB/6ST/D2	CDIB, Size 6, Deep Profile, Solid Top, Open Sides

UNIVERSAL ENCLOSURES

HAND HELD CASES

HEAVY DUTY ENCLOSURES

DIN RAIL BOXES

INTERFACE SUPPORTS

CONTROL STATIONS

DIECAST & METAL BOXES

DESKTOP & INSTRUMENT CASES

POTTING BOXES

19" ENCLOSURES

19" CABINETS

DEVELOPMENT BOARD ENCLOSURES

CUSTOM SIZED ENCLOSURES

CUSTOM SERVICES

X-ON Electronics

Largest Supplier of Electrical and Electronic Components

Click to view similar products for [camden manufacturer](#):

Other Similar products are found below :

[412689X](#) [CTBP92VE/12R](#) [CTBP9350/12](#) [IND515205-240-T/GRN](#) [IND515205-240-T/RD](#) [IND5032405-240-T/GRN](#) [CE10.00.EI](#)
[C192SHAND](#) [CNMB/6ST/2](#) [CNMB/4ST/2](#) [CSACST004](#) [CTBP9200/9](#) [CIME/M/BE2250SS](#) [CHH64E1BL](#) [CIM/15W-DMFS](#) [CHHBAT2GY](#)
[CFTBN/2](#) [CCB2S1/04](#) [CHDX6-221C](#) [CHDX8-224](#) [CHDASMP29](#) [CHDASMP30](#) [CHDASMP34](#) [CHDX810DD](#) [CHDX811DD](#)
[CCTTM40LR](#) [CTBP92VJ/5S](#) [CTBP92VJ/8R](#) [CTSN431/12/M](#) [CTSN433/12/M](#) [CUABOX006](#) [CE10.00.FM](#) [CBRPH-BLK](#) [BIM2003/13-](#)
[WH/WH](#) [RX2008/S-5-WH](#) [CBARD-CAR](#) [CRDCG0007](#) [CNMB/4/KIT](#) [CTB5050/5](#) [CTBP92HE/11](#) [CTBP9358/10AO](#) [CHH66C2GY](#)
[CHH456PBK](#) [CHH451ABK](#) [CIM/9W-DMFS](#) [CIM/25W-DMFS](#) [RTM5006/16-NC-BLK](#) [IND5032405-125-T/AMB](#) [CCB1S1/03](#) [CCD2S1/04](#)